

Groveland Community Services District
Special Meeting of September 20, 2018

AGENDA SUPPORTING DATA

2. Action Items

- A. Adoption of a Resolution Adopting Plans and Specifications for Storm Damage Related Projects including the Flume Rehabilitation Project and Ferretti Rd. Water and Sewer main Replacement, Authorizing Project Bidding and Filing CEQA Notices of Exemption for each

Recommended Action

Staff recommends the following motion:

I Move to Adopt a Resolution Adopting Plans and Specifications for Storm Damage Related Projects including the Flume Rehabilitation Project and Ferretti Rd. Water and Sewer main Replacement, Authorizing Project Bidding and Filing CEQA Notices of Exemption for each

Background

The District wastewater treatment plant "Flume" diversion serves to move stormwater runoff away from the wastewater holding ponds and other infrastructure. In 2017 the Flume was damaged by heavy rain and runoff which resulted in a disaster and FEMA funding for repair of the flume damage. The District finally received a grant commitment from FEMA during spring of 2018, at which time the flume was further damaged by the March 22, 2018 flash floods. The State Office of Emergency Services has offered CDAA funding assistance to cover 75% of the cost of the 2018 damage. There is also renovation work to be completed that may not be covered under the FEMA or state funding as it could be considered normal maintenance.

Also, the District water and sewer main crossing the damaged culvert on Ferretti Rd were destroyed during the March 22, 2018 floods. We are programmed to receive CDAA funds at 75% of the project costs for replacement of the water and sewer mains in the area of the culvert. We are responsible to hire the contractor to replacement water and sewer mains, who will work in coordination with the county's selected road contractor.

A technical memorandum from the District Engineer is included detailing the Flume project damage. This information is provided only for your reference to better understand the project through the photographs. Staff is performing a final review of the plans and specifications which should be final and prepared for bidding soon after Board adoption. Both projects need to be publicly bid as soon as possible for construction to occur before winter, and in coordination with the county road contract.

The California Public Contract Code requires that the Board "Adopt" project plans, and current Board policy does not specifically delegate that responsibility to the GM or District Engineer. Therefore, the project plans are submitted herein for your adoption. Once bids are opened, the Board will be asked to consider award of the construction contracts for the above discussed projects.

The bid advertisement will be published in both general circulation newspapers, as well as published in the trade journals and sent to plan centers.

FINANCIAL IMPACTS

The cost to proceed with project bidding is less than \$5,000, including engineering assistance. This does not include construction costs.

RESOLUTION _____

A RESOLUTION OF THE BOARD OF DIRECTORS OF THE GROVELAND COMMUNITY SERVICES DISTRICT ADOPTING PLANS AND SPECIFICATIONS, AUTHORIZING BIDDING AND ADOPTING A CEQA NOTICE OF EXEMPTION FOR STORM DAMAGE RELATED PROJECTS INCLUDING THE FLUME REHABILITATION PROJECT AND FERRETTI RD WATER AND SEWER MAIN REPLACEMENT

WHEREAS, the Groveland Community Services District (herein referred to as District) is a local government agency formed and operating in accordance with Section §61000 et seq. of the California Government Code; and

WHEREAS, on March 22, 2018, a flash flood occurred in the community that resulted in erosion and deposition of soil and debris in several locations at the District maintenance yard and wastewater overflow percolation ponds; and

WHEREAS, the District has prepared project plans and specifications for two flood restoration projects which are intended to be separately bid due to construction timing and type of work; and

WHEREAS, Construction Plans are included herein for the Flume Rehabilitation Project and the Ferretti Road Water and Sewer Repair Projects; and

WHEREAS, District staff has reviewed the plans and recommends their adoption by the Board; and

WHEREAS, District staff has determined that the projects are exempt from the Requirements of the California Environmental Quality Act (CEQA) and recommends the filing of a Notice of Exemption.

NOW THEREFORE BE IT RESOLVED THAT THE BOARD OF DIRECTORS OF THE GROVELAND COMMUNITY SERVICES DISTRICT DOES HEREBY approve as follows:

1. The Plans for the Flume Renovation Project and Ferretti Road Water and Sewer Repair Projects are hereby adopted.
2. The General Manager is authorized to publicly bid both projects.
3. The CEQA Notice of Exemption is adopted for each project and is to be filed by the General Manager.

WHEREFORE, this Resolution is passed and adopted by the Board of Directors of the Groveland Community Services District on September 20, 2018, by the following vote:

Resolution _____

Page 2 of 2

AYES:

NOES:

ABSENT:

ABSTAIN:

ATTEST:

Jennifer Flores, Secretary

Robert Swan, President - Board of Directors

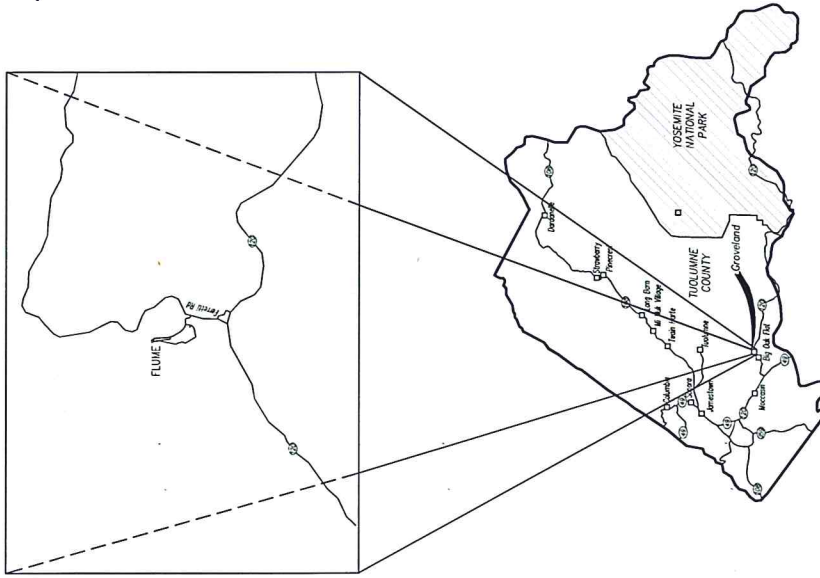
CERTIFICATE OF SECRETARY

I, Jennifer Flores, the duly appointed and acting Secretary of the Board of Directors of the Groveland Community Services District, do hereby declare that the foregoing Resolution was duly passed and adopted at a Special Meeting of the Board of Directors of the Groveland Community Services District, duly called and held on September 20, 2018.

DATED: _____

GROVELAND AND COMMUNITY SERVICES DISTRICT

CONSTRUCTION PLANS FOR FLUME REHABILITATION PROJECT August 2018



VICINITY MAP

GENERAL NOTES

1. THE CONTRACTOR SHALL BE RESPONSIBLE FOR ANY ON-SITE IMPROVEMENTS DAMAGED DURING CONSTRUCTION AND FOR THEREAFTER.
2. ALL WORK SHALL BE PERFORMED IN ACCORDANCE WITH APPLICABLE HEALTH AND SAFETY LAWS OF THE STATE OF CALIFORNIA DIVISION OF INDUSTRIAL SAFETY.
3. ALL LOCATIONS, ELEVATIONS, AND DIMENSIONS OF PIPELINES, STRUCTURES AND OTHER EXISTING FACILITIES WERE TAKEN FROM AVAILABLE RECORD DRAWINGS AND FIELD SURVEY. THE CONTRACTOR SHALL VERIFY ALL INFORMATION FROM AVAILABLE RECORD DRAWINGS AND FIELD SURVEY. THE CONTRACTOR SHALL VERIFY ALL INFORMATION FROM AVAILABLE RECORD DRAWINGS AND FIELD SURVEY. THE CONTRACTOR SHALL VERIFY ALL INFORMATION FROM AVAILABLE RECORD DRAWINGS AND FIELD SURVEY.
4. THE CONTRACTOR SHALL NOTIFY THE UNDERGROUND SERVICE ALERT (USA) 48 HOURS IN ADVANCE OF PERFORMING EXCAVATION WORK FOR LOCATION OF UTILITIES BY CALLING 1-800-272-5900.
5. THE CONTRACTOR SHALL BE RESPONSIBLE FOR OBTAINING ALL NECESSARY PERMITS, GRASSES, FENCE AND OTHER IMPROVEMENTS THAT ARE DAMAGED OR REMOVED DURING CONSTRUCTION.
6. RESTORE PAVED AREAS AND IMPAVED AREAS TO EXISTING CONDITIONS.
7. THE CONTRACTOR SHALL NOTIFY THE FOLLOWING UTILITY COMPANIES A MINIMUM OF FOUR DAYS PRIOR TO BEGINNING PRELIM EXCAVATION WORK AND TELEPHONE NUMBERS TO CONTACT SHALL BE OBTAINED AT PRECONSTRUCTION MEETING.

USA CABLE LOCATING SERVICE
CONTACT 48 HOURS PRIOR TO
CALL: (209) 822-7178
CALL: 1-800-542-2444

TUOLUMNE PUBLIC POWER
AGENCY
CALL: (209) 533-5511

GROVELAND COMMUNITY
SERVICES DISTRICT
CALL: (209) 822-7178
CONTACT: PETER KAMPA

APPROVED BY:

PETER KAMPA, GENERAL MANAGER

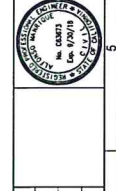
1	E-1	COVER SHEET
2	E-1	SITE LOCATION PLAN
3	E-2	SITE PLAN IMPROVEMENTS
4	E-3	SECTION DETAILS
5	BA-1	BID ACTION #1 - SITE LOCATION PLAN
6	BA-2	BID ACTION #2 - SITE PLAN IMPROVEMENTS

BOARD OF DIRECTORS
GROVELAND COMMUNITY SERVICES DISTRICT

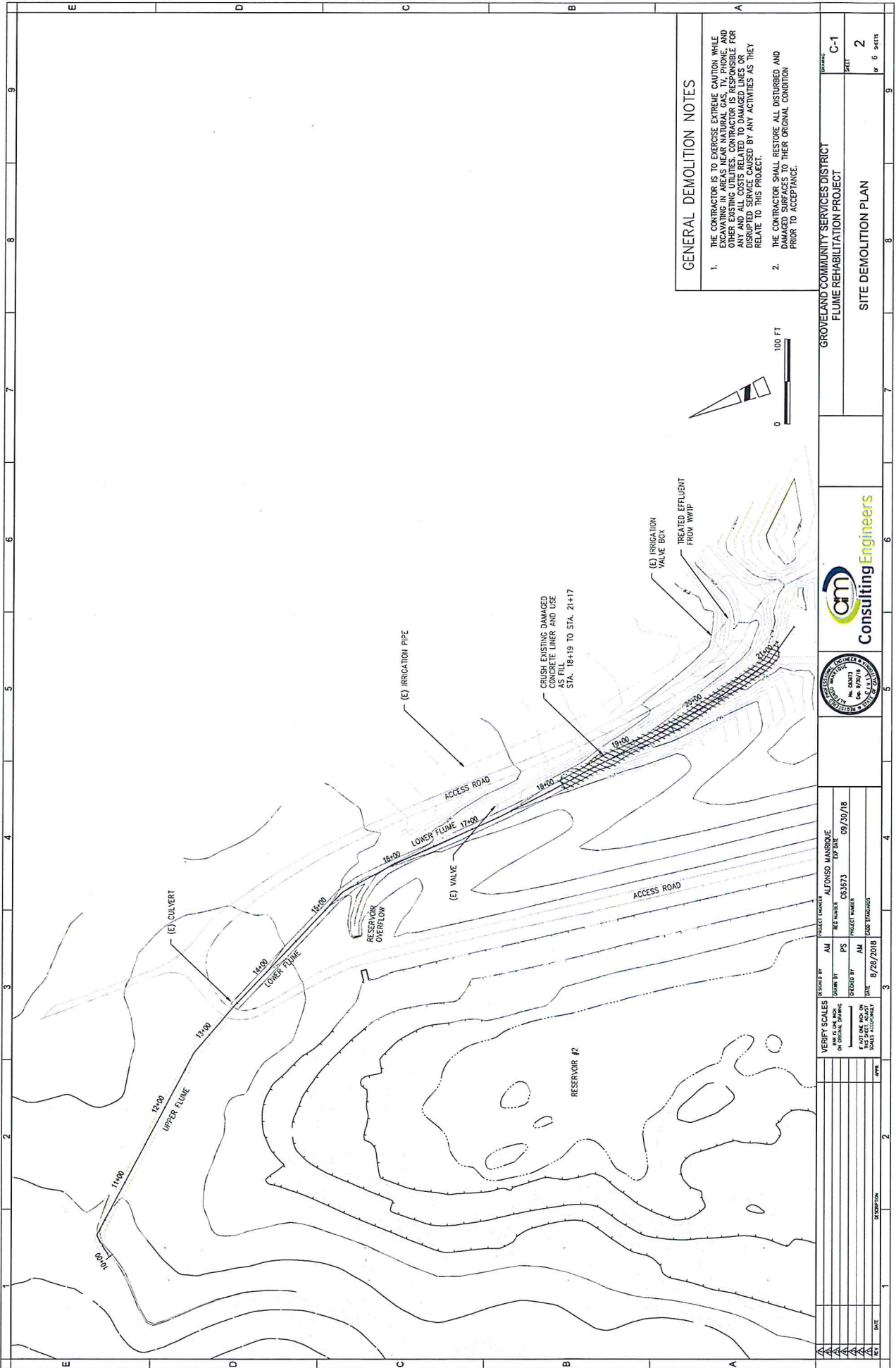
- BOARD PRESIDENT
ROBERT SWAN
- VICE PRESIDENT
JOHN ARMSTRONG
- DIRECTOR
SPENCER EDWARDS
- DIRECTOR
JANICE KWATKOWSKI
- DIRECTOR
NANCY MORA

REV	DATE	DESCRIPTION	BY	CHK

VERIFY SCALES	DESIGNED BY	PROJECT ENGINEER	ALFONSO MANRIQUE
FOR ALL SHEETS	DRAWN BY	FILE NUMBER	063073
IF NOT ONE AND ON	CHECKED BY	ISSUE DATE	09/20/18
SEAL & SIGNATURE	DATE	PROJECT NUMBER	



GROVELAND COMMUNITY SERVICES DISTRICT FLUME REHABILITATION PROJECT	
COVER SHEET	
DRAWING SHEET	G-1
1	
OF 6 SHEETS	



GENERAL DEMOLITION NOTES

1. THE CONTRACTOR IS TO EXERCISE EXTREME CAUTION WHILE DEMOLISHING EXISTING STRUCTURES AND UTILITIES. THE CONTRACTOR IS RESPONSIBLE FOR ANY AND ALL COSTS RELATED TO DAMAGED LINES OR DISRUPTED SERVICE CAUSED BY ANY ACTIVITIES AS THEY RELATE TO THIS PROJECT.
2. THE CONTRACTOR SHALL RESTORE ALL DISTURBED AND DAMAGED SURFACES TO THEIR ORIGINAL CONDITION PRIOR TO ACCEPTANCE.

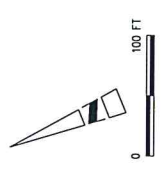
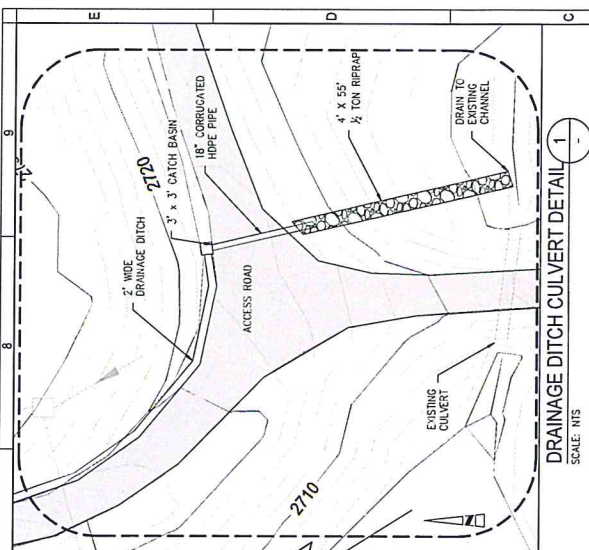
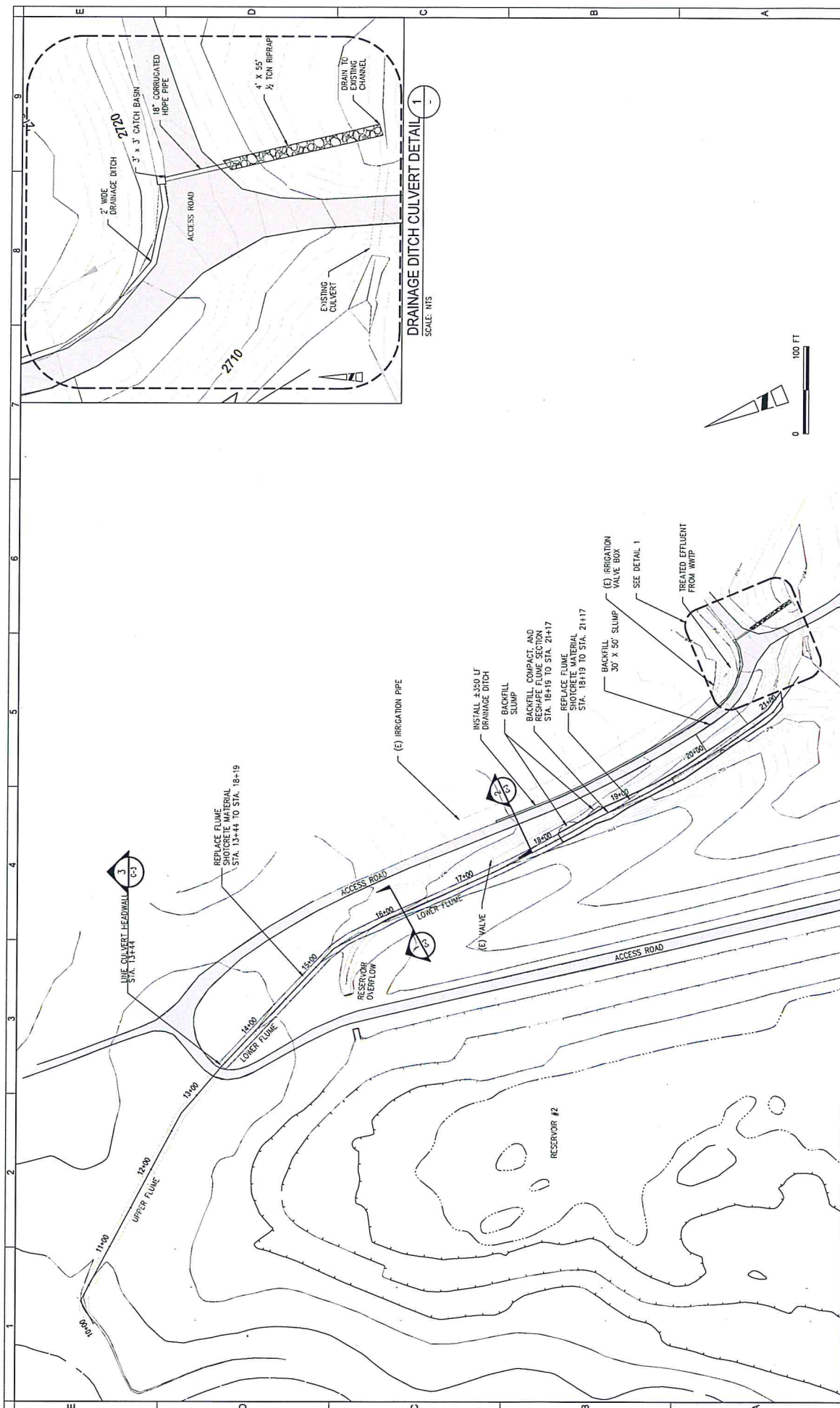
DATE	DESCRIPTION	APP'D

VERIFY SCALES	DESIGNED BY	AM	AUTONSO MARRIQUE
ON ORIGINAL DRAWING	DRAWN BY	PS	TOP SURV
DATE	CHECKED BY	AM	09/20/18
8/28/2018	DATE	AM	09/20/18

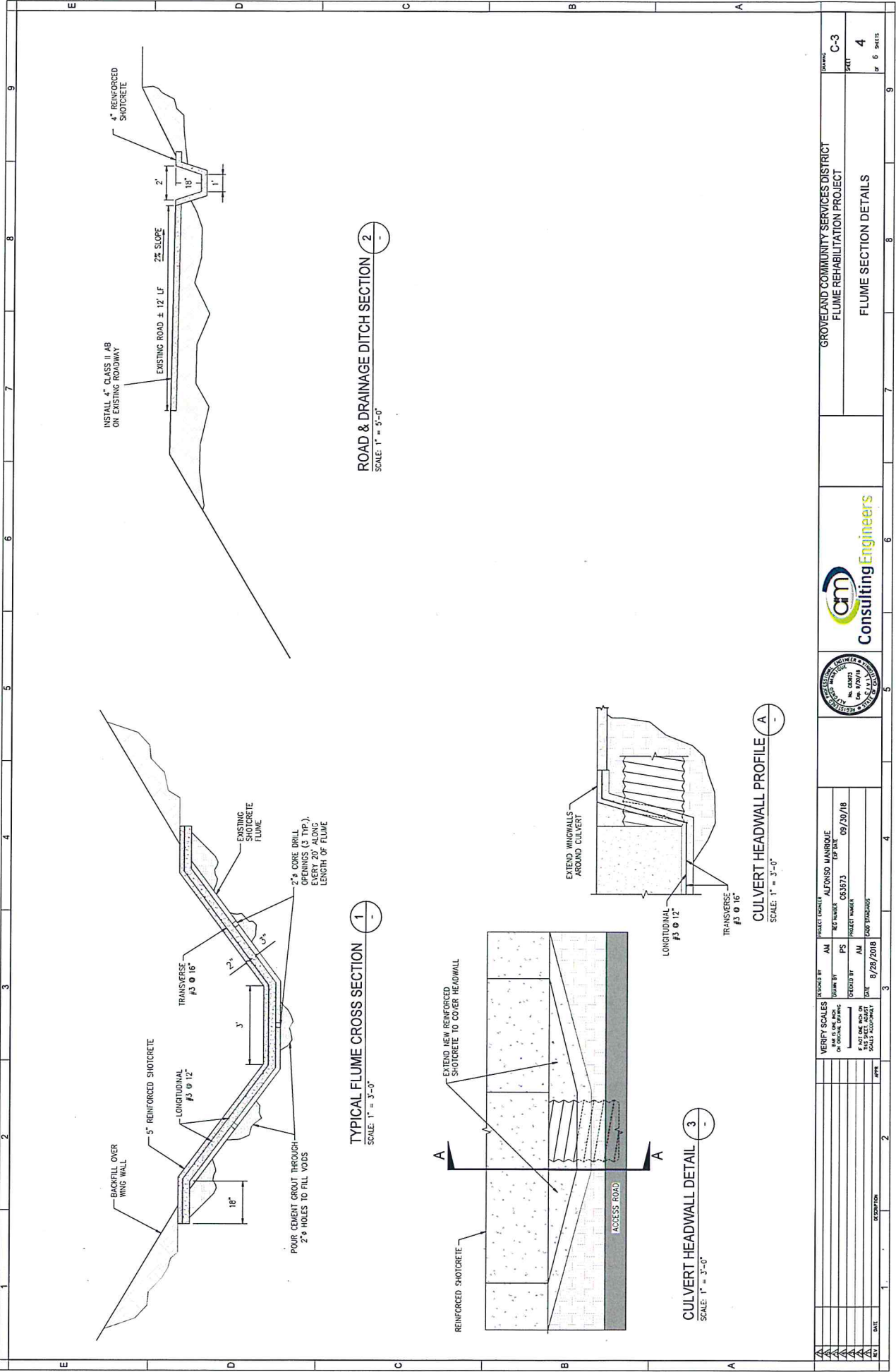
PROJECT NUMBER	035673
PROJECT NAME	G08 TRUCKS



GROVELAND COMMUNITY SERVICES DISTRICT	
FLUME REHABILITATION PROJECT	
PROJECT	C-1
SHEET	2
of 6 sheets	
SITE DEMOLITION PLAN	



VERIFY SCALES HAS A SET OF SCALES OF EACH SIZE OF SHEET. IF NOT OK, CHECK WITH THE PROJECT ENGINEER.		DRAWN BY: AM CHECKED BY: PS DATE: 8/28/2018	PROJECT NUMBER: ALFONSO MANRIQUE SHEET NUMBER: CS9573 PROJECT NAME: LOOP STAIRWAYS	DATE: 09/20/18
PROJECT LOCATION: GROVELAND COMMUNITY SERVICES DISTRICT FLUME REHABILITATION PROJECT	SHEET: C-2 OF 6 SHEETS	DATE: 8/28/2018	PROJECT NUMBER: CS9573	PROJECT NAME: LOOP STAIRWAYS
Consulting Engineers 		PROJECT LOCATION: GROVELAND COMMUNITY SERVICES DISTRICT FLUME REHABILITATION PROJECT		
SHEET: C-2 OF 6 SHEETS		PROJECT NUMBER: CS9573		
PROJECT NAME: LOOP STAIRWAYS		DATE: 8/28/2018		
DATE: 09/20/18		PROJECT NUMBER: CS9573		
DRAWN BY: AM		CHECKED BY: PS		
PROJECT LOCATION: GROVELAND COMMUNITY SERVICES DISTRICT FLUME REHABILITATION PROJECT		SHEET: C-2 OF 6 SHEETS		



INSTALL 4" CLASS II AB ON EXISTING ROADWAY

EXISTING ROAD ± 12' LF

2% SLOPE

4" REINFORCED SHOTCRETE

BACKFILL OVER WING WALL

5" REINFORCED SHOTCRETE

LONGITUDINAL #3 @ 12"

TRANSVERSE #3 @ 16"

3'

18"

POUR CEMENT CIRCUIT THROUGH 2" HOLES TO FILL VOIDS

EXISTING CONCRETE FLUME

2" CORE DRILL OPENINGS (3 TOP), EVERY 20' ALONG LENGTH OF FLUME

REINFORCED SHOTCRETE

EXTEND NEW REINFORCED SHOTCRETE TO COVER HEADWALL

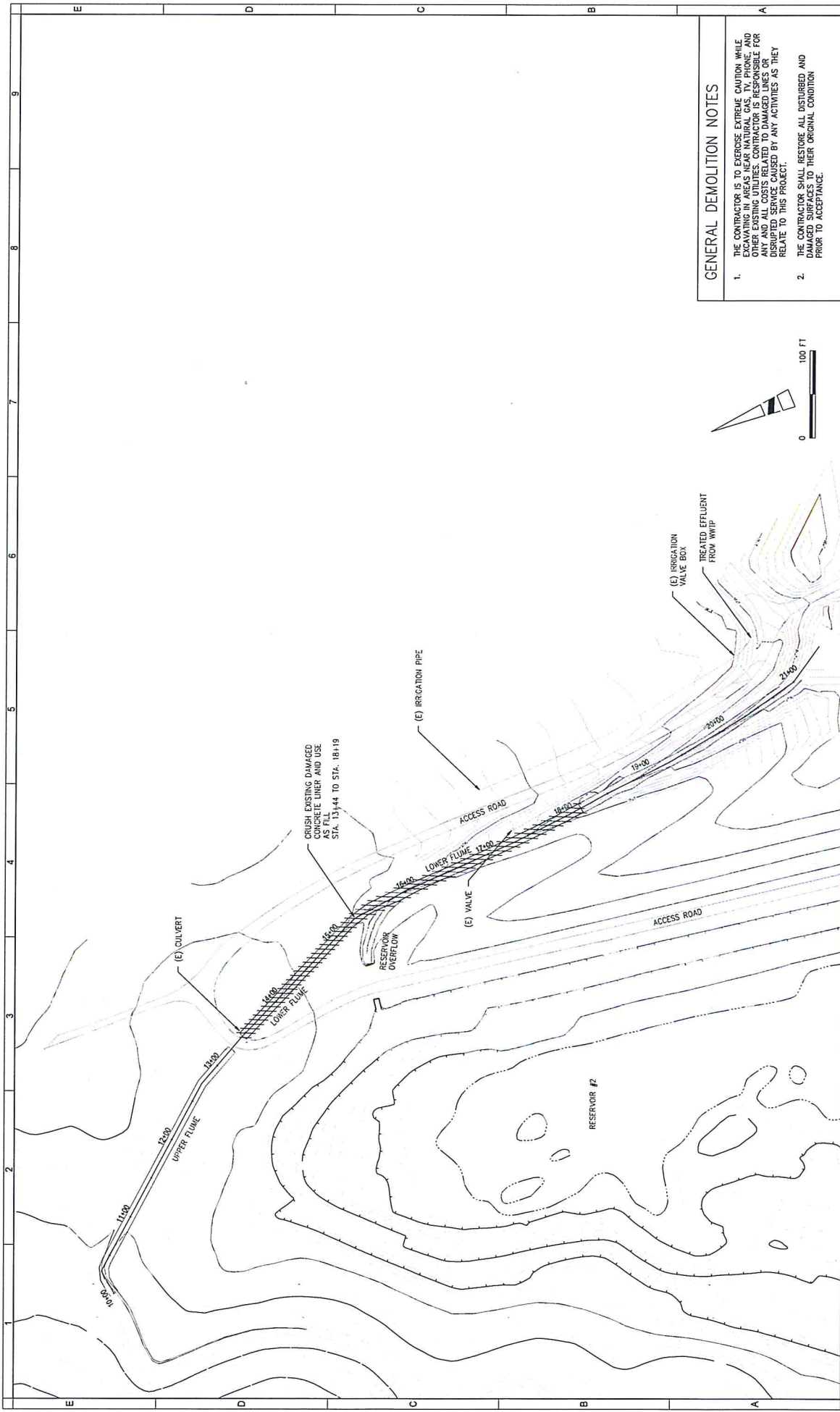
ACCESS ROAD

LONGITUDINAL #3 @ 12"

TRANSVERSE #3 @ 16"

EXTEND WINGWALLS AROUND CULVERT

GROVELAND COMMUNITY SERVICES DISTRICT FLUME REHABILITATION PROJECT		SHEET C-3 4 of 6 SHEETS	
Consulting Engineers		FLUME SECTION DETAILS	
DESIGNED BY AM	PROJECT MANAGER ALFONSO MANSUQUE	DATE 09/20/18	
DRAWN BY PS	PROJECT NUMBER CS5873	DATE 09/20/18	
CHECKED BY AM	SCALE 1" = 3'-0"	DATE 09/20/18	
DATE 08/29/2018	SCALE ASSIGNMENT	DATE	
NO.	DESCRIPTION	DATE	APPR.

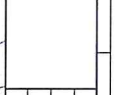


GENERAL DEMOLITION NOTES

1. THE CONTRACTOR IS TO EXERCISE EXTREME CAUTION WHILE DEMOLISHING EXISTING STRUCTURES AND UTILITIES. THE CONTRACTOR SHALL BE RESPONSIBLE FOR ANY AND ALL COSTS RELATED TO DAMAGED LINES OR DISRUPTED SERVICE CAUSED BY ANY ACTIVITIES AS THEY RELATE TO THIS PROJECT.
2. THE CONTRACTOR SHALL RESTORE ALL DISTURBED AND DAMAGED SURFACES TO THEIR ORIGINAL CONDITION PRIOR TO ACCEPTANCE.

GROVELAND COMMUNITY SERVICES DISTRICT
 FLUME REHABILITATION PROJECT
 BID ADDITION #1
 SITE DEMOLITION PLAN

BA-1
 SHEET
 5
 OF 6 SHEETS



DESIGNED BY	AM	PROJECT ENGINEER	ALFONSO MANRIQUE
CHECKED BY	PS	PROJECT NUMBER	CS 3973
DATE	8/28/2018	DATE	09/20/18
SCALE	AS SHOWN	SCALE	AS SHOWN

NO.	DATE	DESCRIPTION	BY

TECHNICAL MEMORANDUM

TO: PETER KAMPA, GENERAL MANAGER, GCSD
FROM: ALFONSO MANRIQUE, PE
SUBJECT: DAMAGE TO GROVELAND RESERVOIR #2 DRAINAGE FLUME AS A
RESULT OF MARCH 2018 STORMS
DATE: 6/18/2018

This Technical Memorandum (TM) provides a summary of the condition of the runoff diversion ditch surrounding Groveland Community Services District's (GCSD) Reservoir #2. In addition to normal aging, runoff from winter and spring storms has damaged the concrete liner with severe erosion and subsidence.

BACKGROUND

Figure 1 displays the general project location. Reservoir #2 is utilized by the GCSD to store treated effluent. This effluent is sprayed on 16 adjoining acres owned by GCSD. The reservoir has an approximate storage capacity of 215 ac-ft. The reservoir is surrounded by a drainage ditch to prevent excess runoff from overwhelming the reservoir's distribution system. A shotcrete channel (flume) approximately 1,100 feet in length runs along the eastern edge of the reservoir, between the dam and the access road. Although the flume starts out at grade, as it proceeds along the east side of the reservoir, it follows an increasingly deeper valley with the reservoir on the west side of the flume and the access road on the east side of the flume.

A corrugated metal pipe (CMP) culvert underneath the access road divides the flume into an upper and lower section. The flume was lined with shotcrete around 2001-02 and does not appear to have any rod, mesh, or fiber reinforcement. A lined ditch approximately 70 feet in length acts as the overflow channel for Reservoir #2, and converges with the flume approximately 215 feet downstream of the CMP culvert. The lower section of the flume is designed to carry runoff from above Reservoir #2, and will also convey overflow from Reservoir #2.

Heavy and frequent rain storms during the winter and spring of 2017 severely damaged the flume. Initial damages to the flume and adjacent slopes developed during a series of storms occurring on January 3 – January 12, 2017. Additional storms increased the severity and extent of the damage. The damage was inspected by a FEMA technical specialist to determine what would be eligible for FEMA funding.

After heavy flooding in March 2018, GCSD employees observed new damage to the flume from the CMP culvert to approximately 475 feet downstream (the beginning of the catastrophic failure from 2017). Additional damage also occurred to the reservoir overflow channel. The following section describes the most recent damage to the flume. Figure 2 highlights the area impacted by the 2018 storms.

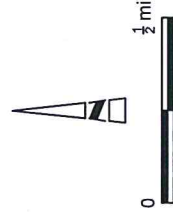
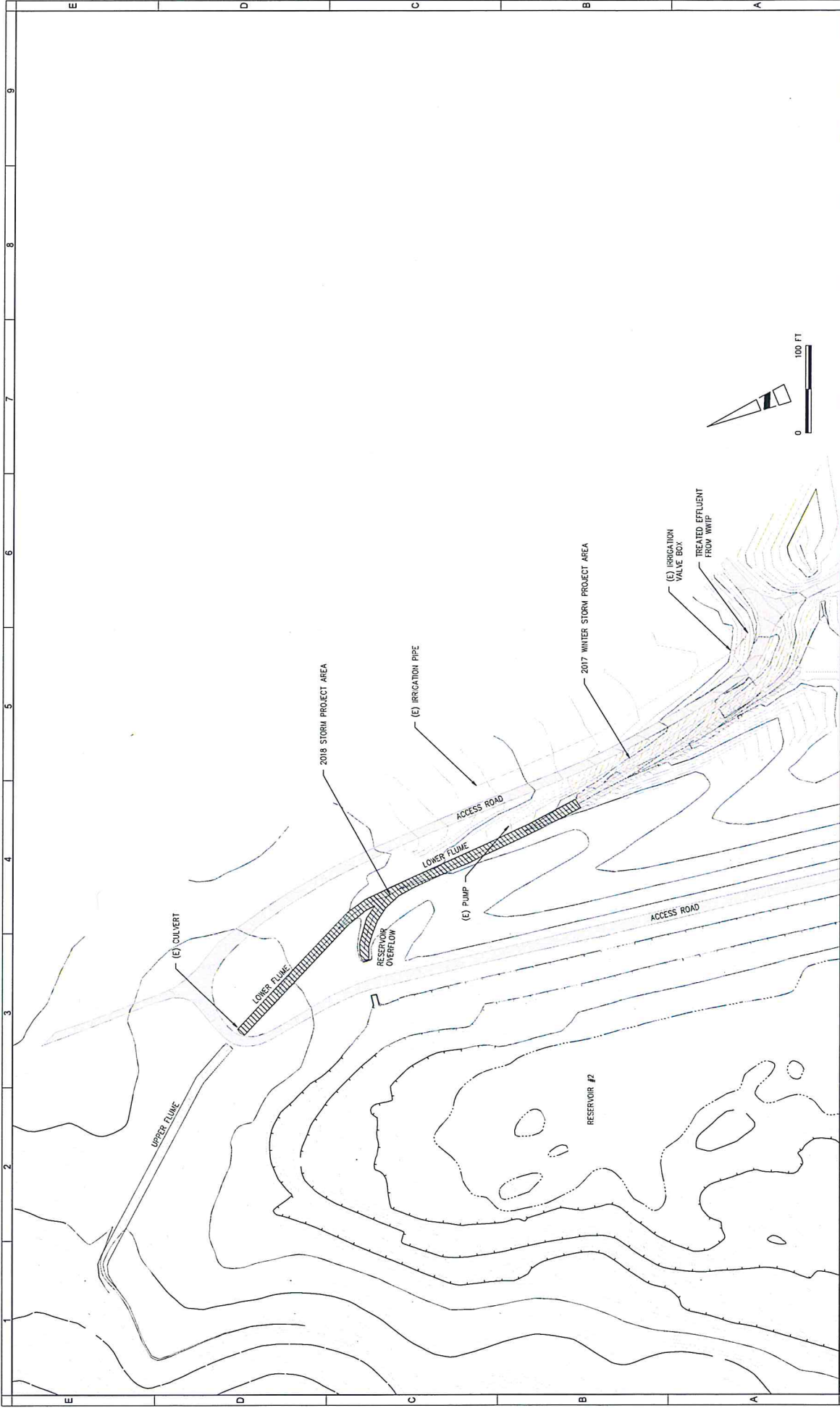


Figure 1
Project Location



DATE	1	DESCRIPTION	
DATE	2	DESCRIPTION	
DATE	3	DESCRIPTION	
DATE	4	DESCRIPTION	
DATE	5	DESCRIPTION	
DATE	6	DESCRIPTION	
DATE	7	DESCRIPTION	
DATE	8	DESCRIPTION	
DATE	9	DESCRIPTION	

VERIFIED BY	ALFONSO MANSOURE	PROJECT NUMBER	
DRAWN BY	PS	REV NUMBER	C63673
CHECKED BY	AM	PROJECT NUMBER	09/20/18
DATE	6/8/17	DATE	09/20/18
DATE		DATE	09/20/18

VERIFICATION	1	DATE	
SHEET	1	DATE	
OF SHEETS	1	DATE	

GROVELAND COMMUNITY SERVICES DISTRICT
 FLUME REHABILITATION PROJECT
 2018 PROJECT SITE PLAN

SITE DAMAGE DESCRIPTION

Figures 3, 4, and 5 show the location of a new longitudinal fracture along the floor of the flume. Water flowing between the sidewall of the flume and the native slope has also caused a section of sidewall to disconnect from the flume (Figure 5). The longitudinal fracture provides an entry point for water to begin eroding the supporting soils at the uphill end of the lower flume. Water entering at this location will impact the entire the flume as runoff infiltrates and runs underneath the length of the structure.

Figures 6 and 7 show the location of a section of sidewall that was removed by the storm. Figures 8 and 9 show the before and after of a floor failure in the upper section. If left unrepaired, floor and sidewall failures will increase infiltration and will erode the base native material supporting the flume. This in turn will lead to catastrophic failures as the flume becomes unsupported.

Figures 10 and 11 show the damage to the reservoir overflow channel. The damage includes additional wear to previously damaged portions of the sidewall and sediment buildup from embankment erosion. Sediment will continue eroding from the embankment and washing down the flume, changing the channel hydraulics and flow velocities.



Figure 3 Lower Flume, Upper Section, 2017

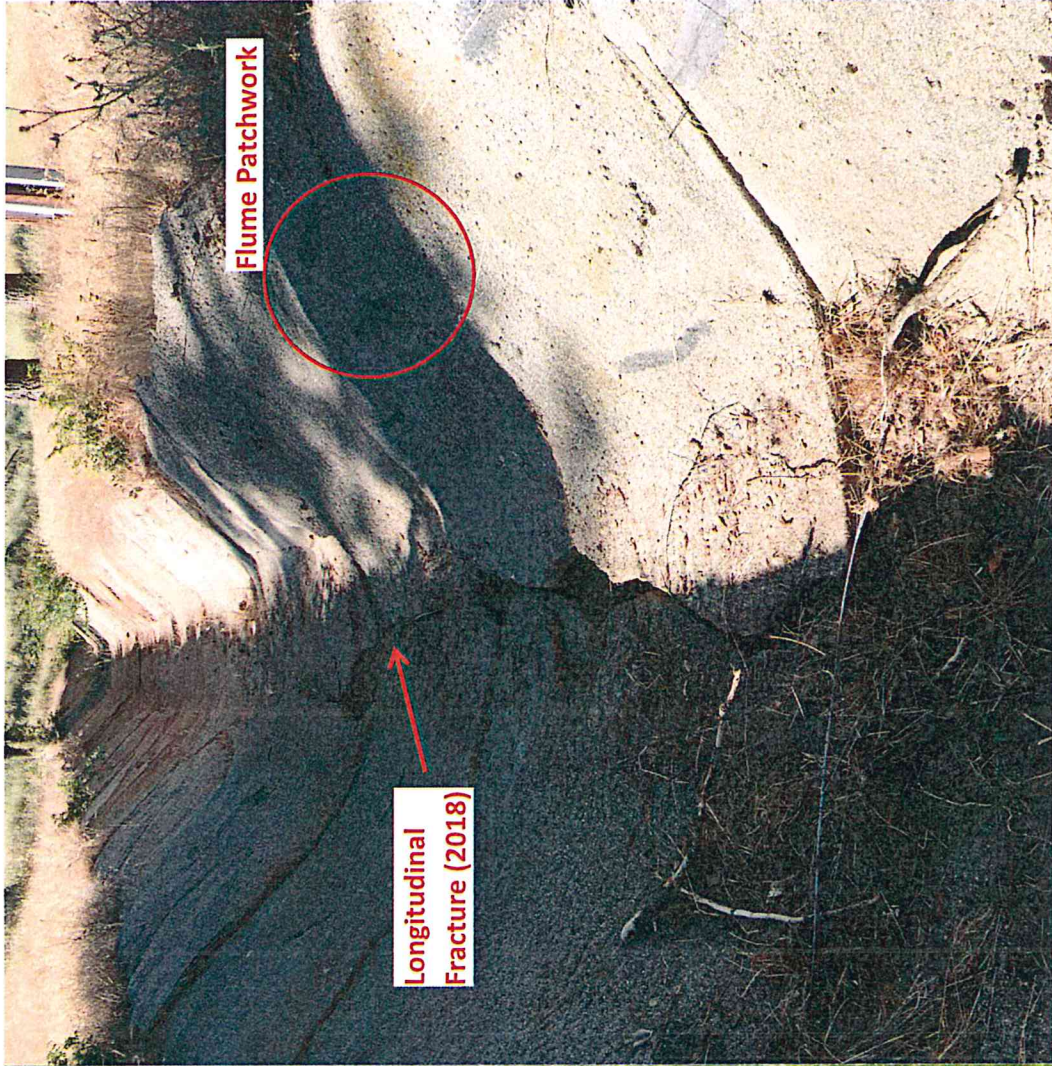


Figure 4 Lower Flume, Upper Section, 2018

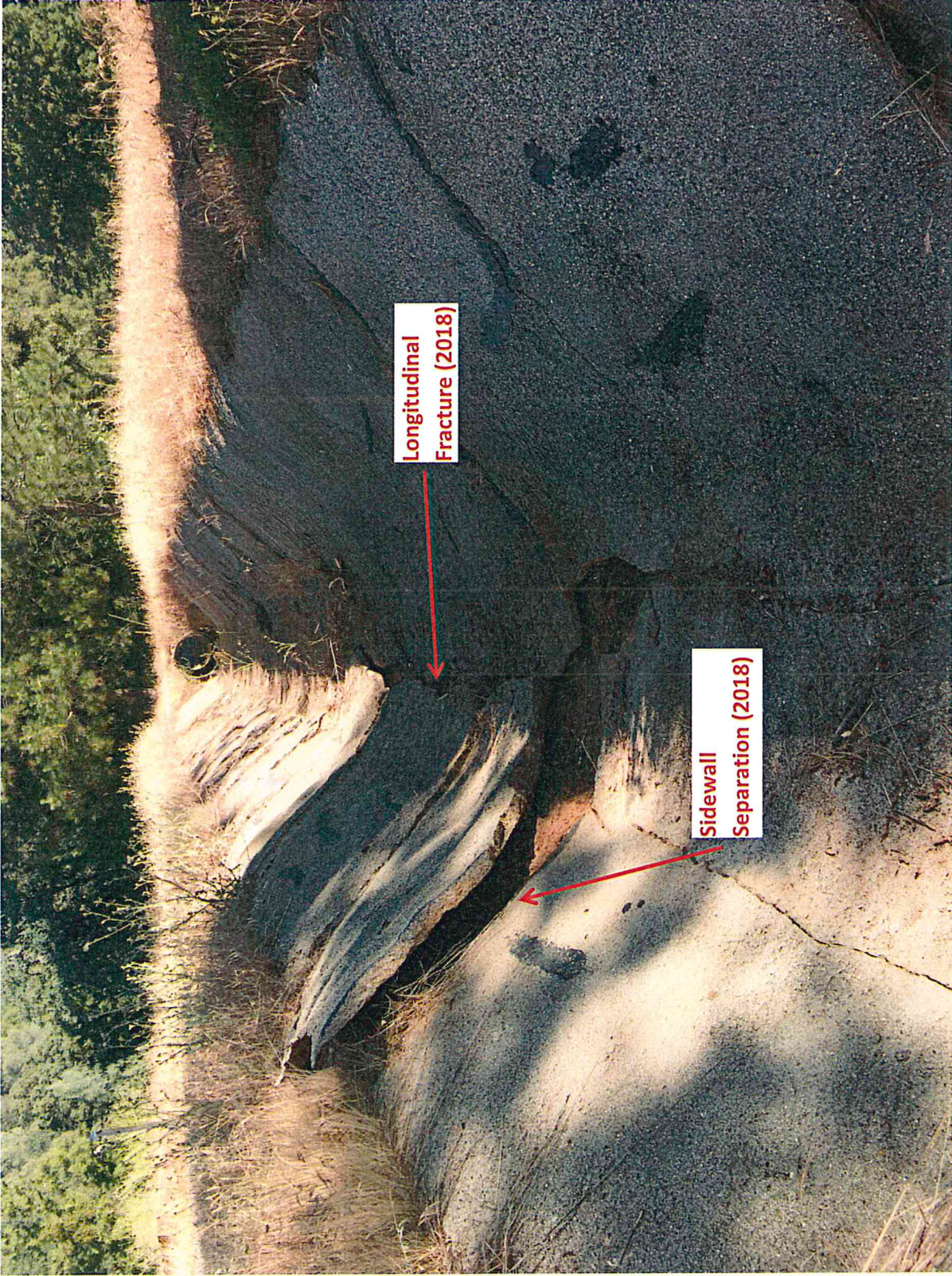


Figure 5 Lower Flume, Upper Section Sidewall Failure, 2018



Figure 6 Lower Flume, Upper Section Sidewall Removal, 2017

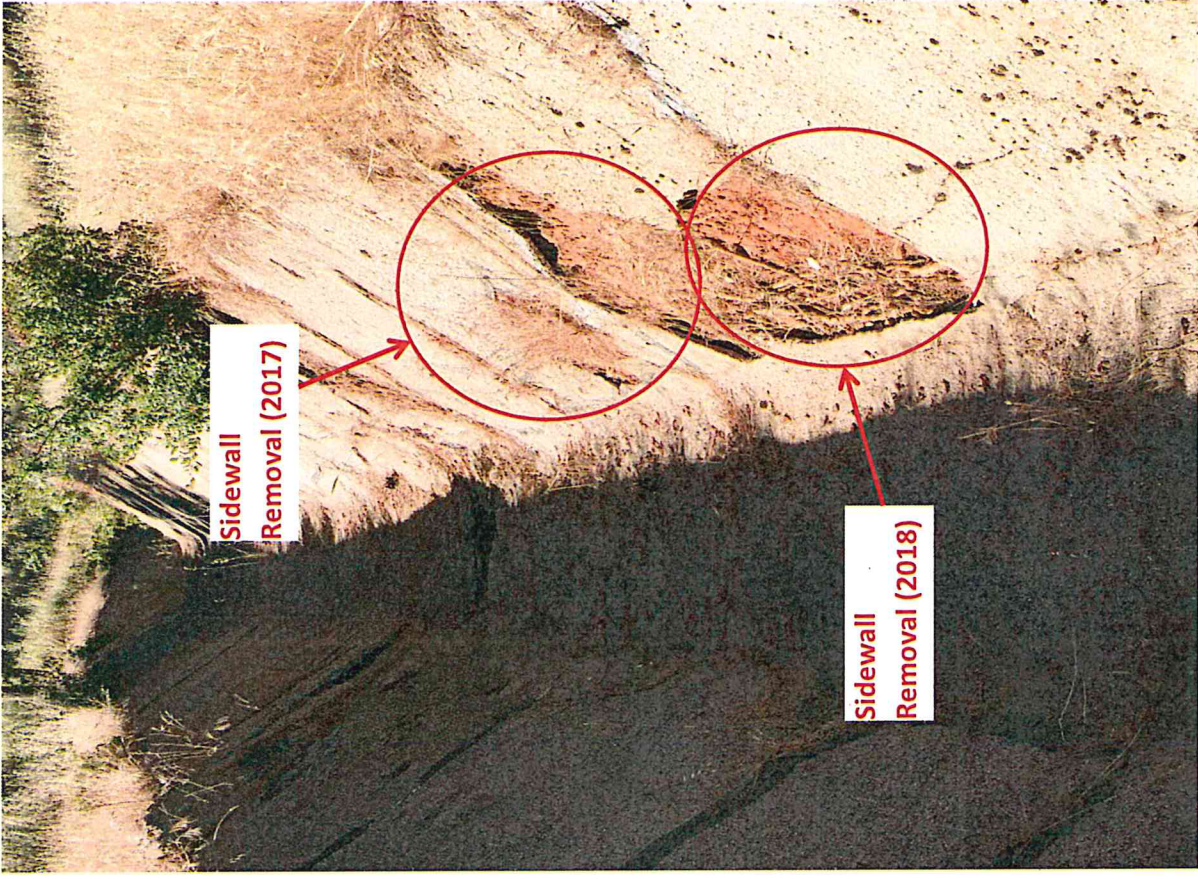


Figure 7 Lower Flume, Upper Section Sidewall Removal, 2018

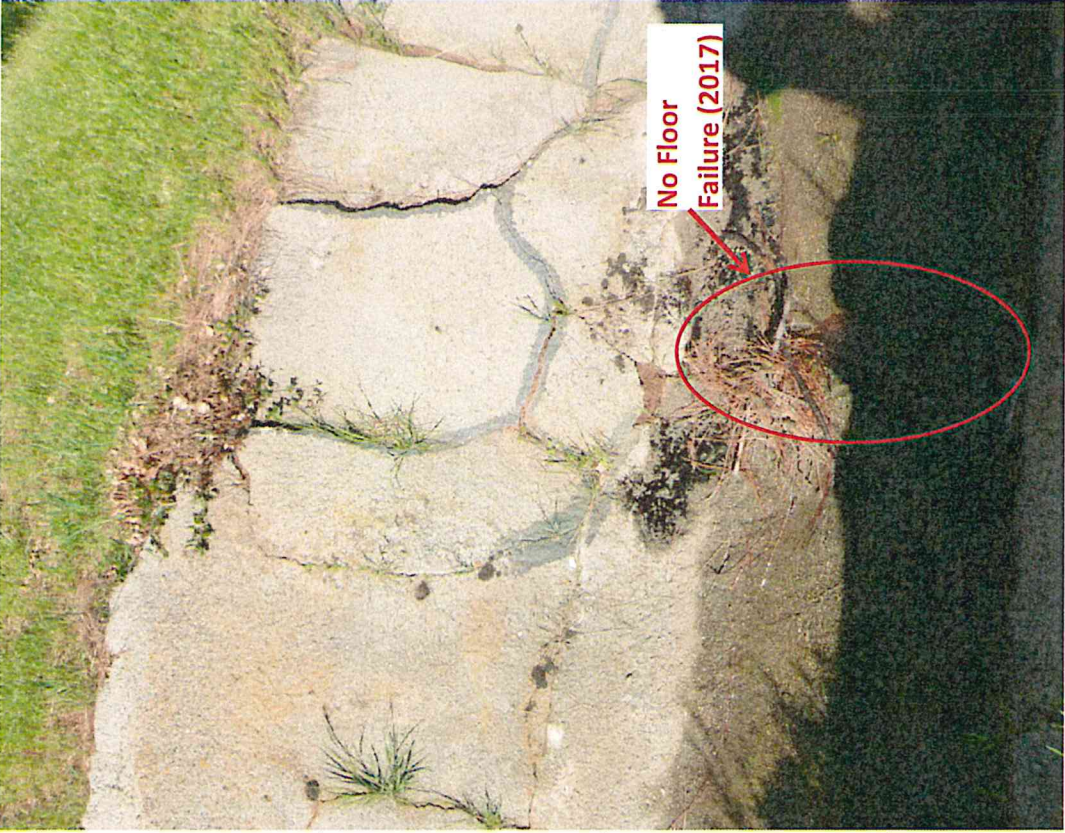


Figure 8 Lower Flume, Upper Section Pre-Floor Failure, 2017



Figure 9 Lower Flume, Upper Section Floor Failure, 2018

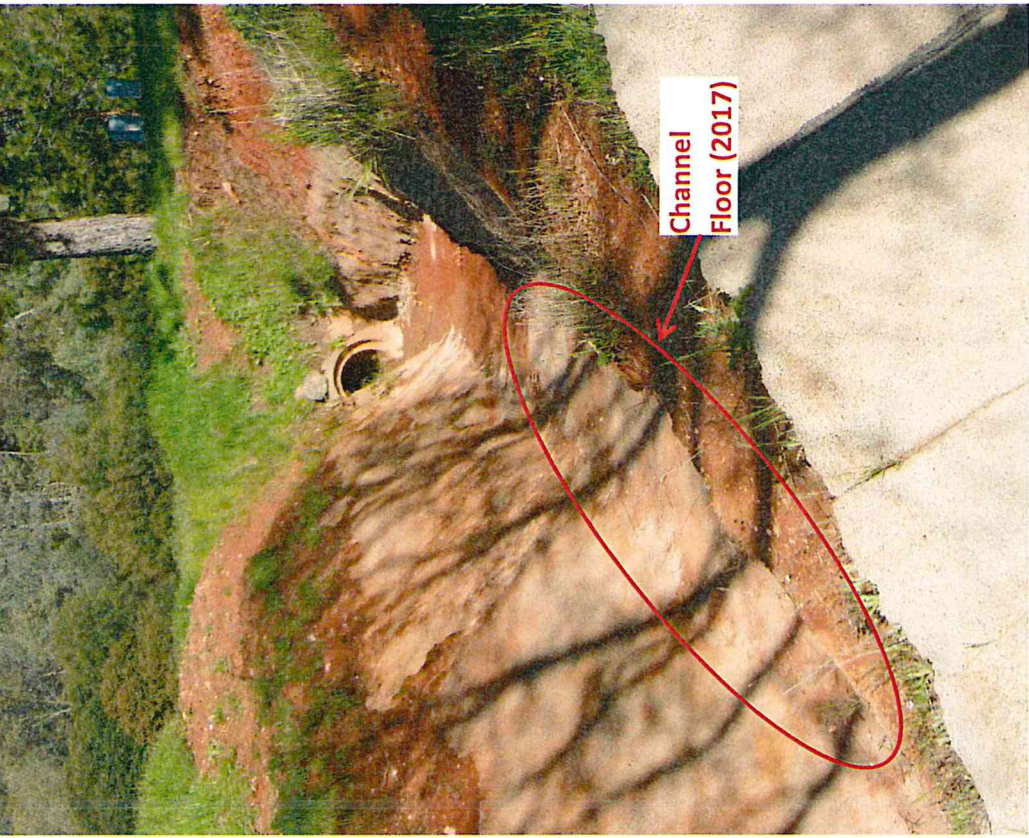


Figure 10 Overflow Channel, 2017

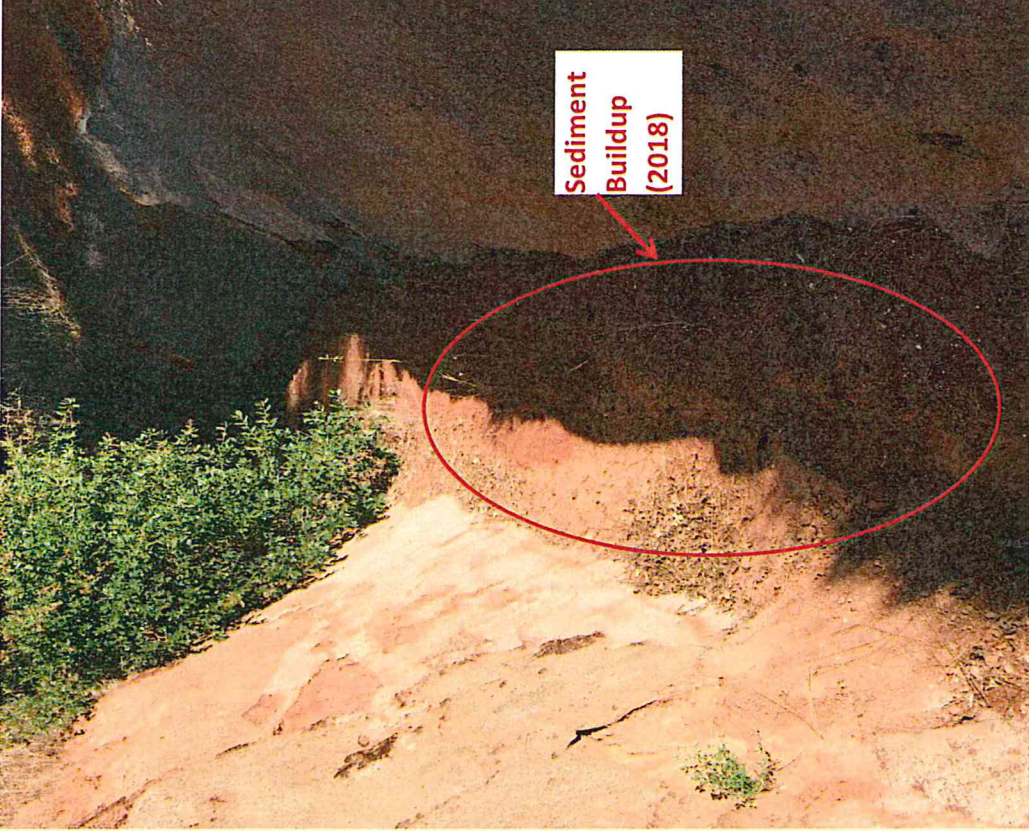


Figure 11 Overflow Channel, 2018

OPINION OF PROBABLE COST

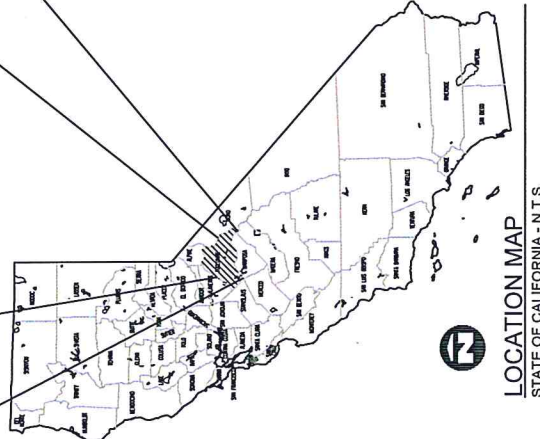
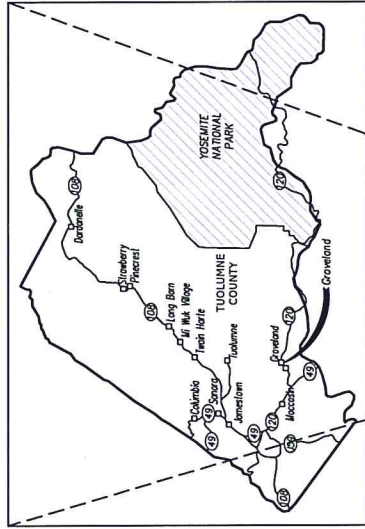
Table 1 displays the cost estimate to demolish the recently damaged sections and to replace backfill, compact, and reshape material below the flume. The cost estimate also includes improvements to the overflow channel, including replacing the flume shotcrete surface material, replacing voids below the flume with slurry-cement, and drilling access core holes for slurry-cement. The funds awarded to repair damage from the 2017 storms cover replacing the flume shotcrete surface material, replacing voids below the flume with slurry-cement, and drilling access core holes for slurry-cement in the main channel of the lower flume.

Table 1 GCSD 2018 Storm Flume Repair Cost Estimate

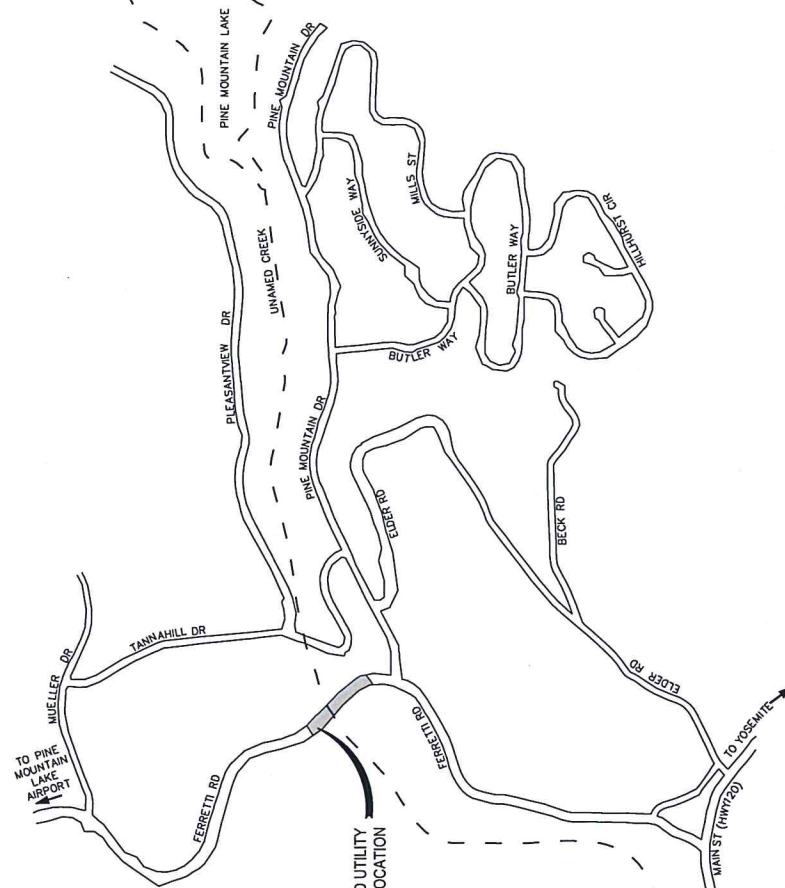
Item No.	Description	Quantity	Unit	Unit Cost	Item Cost
1	Replace Backfill, Compact, and Reshape Damaged Flume Section (Main)	389	CY	\$135.00	\$52,515.00
2	Demolish and Replace Damaged Flume Section (Main)	98	CY	\$280.00	\$27,440.00
3	Replace Flume Shotcrete Surface Material (Overflow)	19	CY	\$925.00	\$17,575.00
4	Slurry-cement Void Fill (Overflow)	23	CY	\$150.00	\$3,450.00
5	Drill Slurry-cement Access Core Holes (Overflow)	11	EA	\$75.00	\$825.00
				Total	\$101,805.00

GROVELAND COMMUNITY SERVICES DISTRICT FERRETTI ROAD WATER AND SEWER LINE REPAIRS

SEPTEMBER 2018



LOCATION MAP
STATE OF CALIFORNIA - N.T.S.

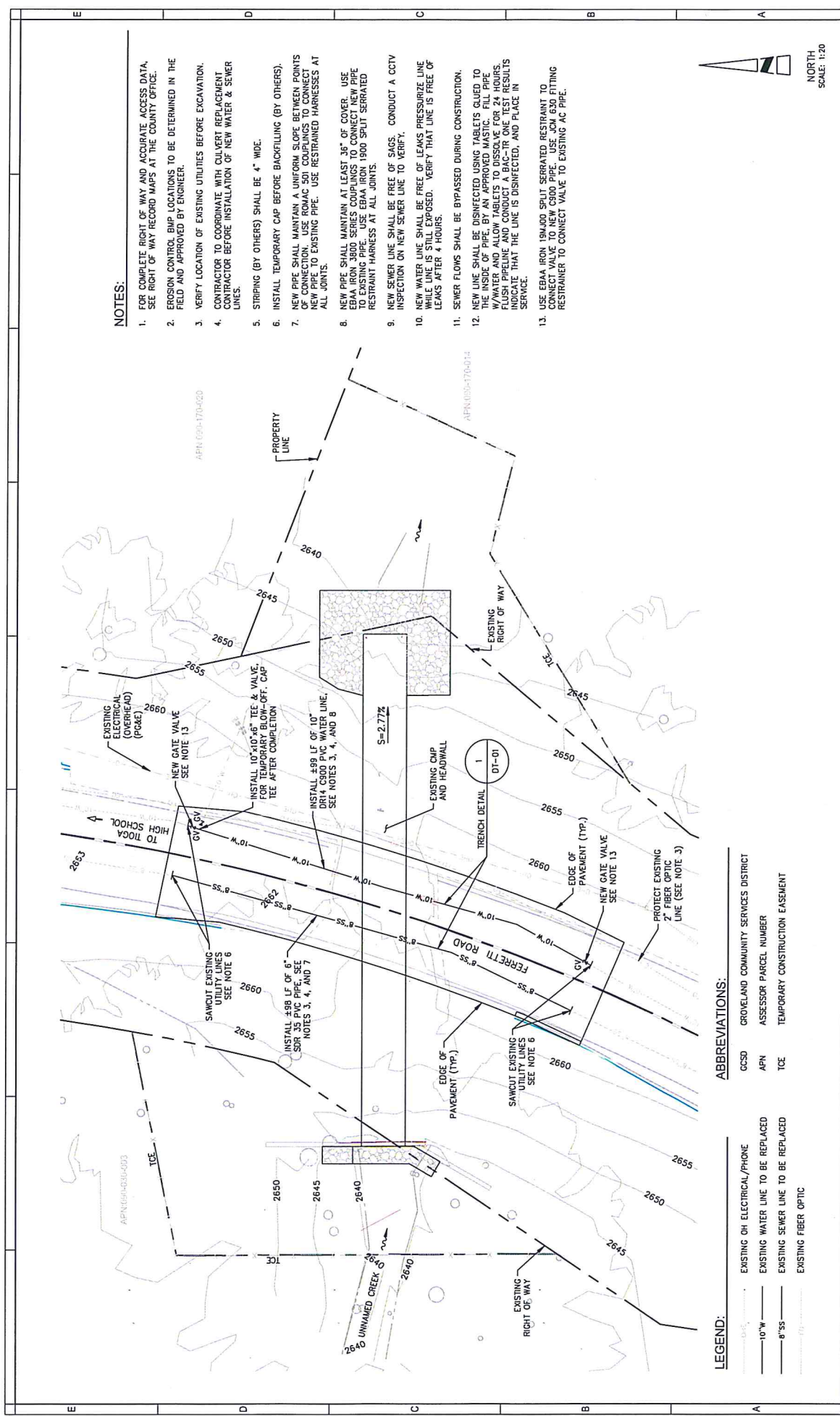


- GENERAL NOTES**
- CONTRACTOR SHALL BE RESPONSIBLE FOR ANY ON-SITE IMPROVEMENTS DAMAGED DURING CONSTRUCTION AND FOR THEIR REPAIR OR REPLACEMENT.
 - ALL WORK SHALL BE PERFORMED IN ACCORDANCE WITH APPLICABLE HEALTH AND SAFETY LAWS OF THE STATE OF CALIFORNIA, DIVISION OF INDUSTRIAL SAFETY.
 - CONTRACTOR SHALL NOTIFY THE UNDERGROUND SERVICE ALERT (USA) 48 HOURS IN ADVANCE OF PERFORMING EXCAVATION WORK FOR LOCATION OF UTILITIES BY CALLING 1-800-227-2600.
 - CONTRACTOR SHALL REPLACE EXISTING CURBS, SWALE, PIPING, PAVING, GRASS, FENCE AND OTHER IMPROVEMENTS THAT ARE DISTURBED, REMOVED OR DAMAGED DURING CONSTRUCTION, REPLACE IN KIND.
 - RESTORE PAVEMENT AND UNPAVED AREAS TO EXISTING CONTOURS.

SHEET INDEX

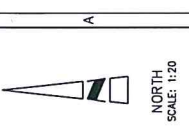
1	G-01	COVER SHEET
3	C-01	SITE PLAN
4	DT-01	DETAILS

	GROVELAND COMMUNITY SERVICES DISTRICT FERRETTI ROAD WATER AND SEWER LINE REPAIRS		
	G-01 01 OF 03 SHEETS	COVER SHEET	
VERIFY SCALES ON DRAWING DURING # REVISIONS FOR SCALES ACCURACY	DRAWN BY AM PS/AM/TH	PROJECT NO./DATE CS3673 09/30/18	CHECKED BY AM 5/14/2018
PROJECT NO./DATE CS3673 09/30/18	PROJECT NO./DATE CS3673 09/30/18	PROJECT NO./DATE CS3673 09/30/18	PROJECT NO./DATE CS3673 09/30/18
PROJECT NO./DATE CS3673 09/30/18	PROJECT NO./DATE CS3673 09/30/18	PROJECT NO./DATE CS3673 09/30/18	PROJECT NO./DATE CS3673 09/30/18
PROJECT NO./DATE CS3673 09/30/18	PROJECT NO./DATE CS3673 09/30/18	PROJECT NO./DATE CS3673 09/30/18	PROJECT NO./DATE CS3673 09/30/18
PROJECT NO./DATE CS3673 09/30/18	PROJECT NO./DATE CS3673 09/30/18	PROJECT NO./DATE CS3673 09/30/18	PROJECT NO./DATE CS3673 09/30/18
PROJECT NO./DATE CS3673 09/30/18	PROJECT NO./DATE CS3673 09/30/18	PROJECT NO./DATE CS3673 09/30/18	PROJECT NO./DATE CS3673 09/30/18



NOTES:

1. FOR COMPLETE RIGHT OF WAY AND ACCURATE ACCESS DATA, SEE RIGHT OF WAY RECORD MAPS AT THE COUNTY OFFICE.
2. EROSION CONTROL BMP LOCATIONS TO BE DETERMINED IN THE FIELD AND APPROVED BY ENGINEER.
3. VERIFY LOCATION OF EXISTING UTILITIES BEFORE EXCAVATION.
4. CONTRACTOR TO COORDINATE WITH CULVERT REPLACEMENT CONTRACTOR BEFORE INSTALLATION OF NEW WATER & SEWER LINES.
5. STRIPING (BY OTHERS) SHALL BE 4" WIDE.
6. INSTALL TEMPORARY CAP BEFORE BACKFILLING (BY OTHERS).
7. NEW PIPE SHALL MAINTAIN A UNIFORM SLOPE BETWEEN POINTS OF CONNECTION. USE ROMAC 501 COUPLINGS TO CONNECT NEW PIPE TO EXISTING PIPE. USE RESTRAINED HARNESS AT ALL JOINTS.
8. NEW PIPE SHALL MAINTAIN AT LEAST 36" OF COVER. USE EBAA IRON 3800 SERIES COUPLINGS TO CONNECT NEW PIPE TO EXISTING PIPE. USE EBAA IRON 1900 SPLIT SERRATED RESTRAINT HARNESS AT ALL JOINTS.
9. NEW SEWER LINE SHALL BE FREE OF SACS. CONDUCT A CCTV INSPECTION ON NEW SEWER LINE TO VERIFY.
10. NEW WATER LINE SHALL BE FREE OF LEAKS PRESSURIZE LINE WHILE LINES ARE STILL EXPOSED. VERIFY THAT LINE IS FREE OF LEAKS AFTER 4 HOURS.
11. SEWER FLOWS SHALL BE BYPASSED DURING CONSTRUCTION.
12. NEW LINE SHALL BE DISINFECTED USING TABLETS CLUED TO THE PIPE. ALL PIPES TO BE DISINFECTED WITH 100% FULL STRENGTH SODIUM HYPOCHLORITE. USE 1/2 TSP PER 100 GALLONS. FLUSH PIPELINE AND CONDUCT A BAC-TRI ONE TEST. RESULTS INDICATE THAT THE LINE IS DISINFECTED, AND PLACE IN SERVICE.
13. USE EBAA IRON 1900 SPLIT SERRATED RESTRAINT TO CONNECT VALVE TO NEW CS100 PIPE. USE JCN 630 FITTING RESTRAINT TO CONNECT VALVE TO EXISTING AC PIPE.



LEGEND:

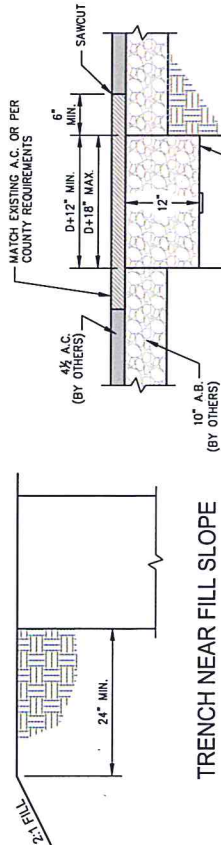
- EXISTING OH ELECTRICAL/PHONE
- EXISTING WATER LINE TO BE REPLACED
- EXISTING SEWER LINE TO BE REPLACED
- EXISTING FIBER OPTIC

ABBREVIATIONS:

- GCSD GROVELAND COMMUNITY SERVICES DISTRICT
- APN ASSESSOR PARCEL NUMBER
- TCE TEMPORARY CONSTRUCTION EASEMENT

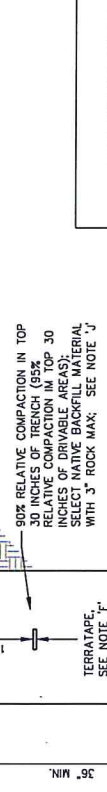
<p>GROVELAND COMMUNITY SERVICES DISTRICT FERRETTI ROAD WATER AND SEWER LINE REPAIRS</p>		<p>PROJECT: ALONZO MANRIQUE ISSUE DATE: 09/20/18 PROJECT NUMBER: GC3673 DATE: 9/14/2018</p>	
<p>SITE PLAN</p>		<p>DATE: 9/14/2018</p>	
<p>C-01</p>		<p>02</p>	
<p>DATE: 09/20/18</p>		<p>DATE: 09/20/18</p>	

E D C B A



TRENCH IN TRAFFIC AREA

WITHIN COUNTY MAINTAIN ROADS
5% RELATIVE COMPACTION
ROADS & ALLEYS
12" A.B. OR DEPTH PER COUNTY REQUIREMENTS. PRIVATE ROADS & ALLEYS
12" A.B. OR PER CCSD TECHNICAL REQUIREMENTS



STANDARD TRENCH

SEE NOTE 'L' REGARDING ASBESTOS CONTENT

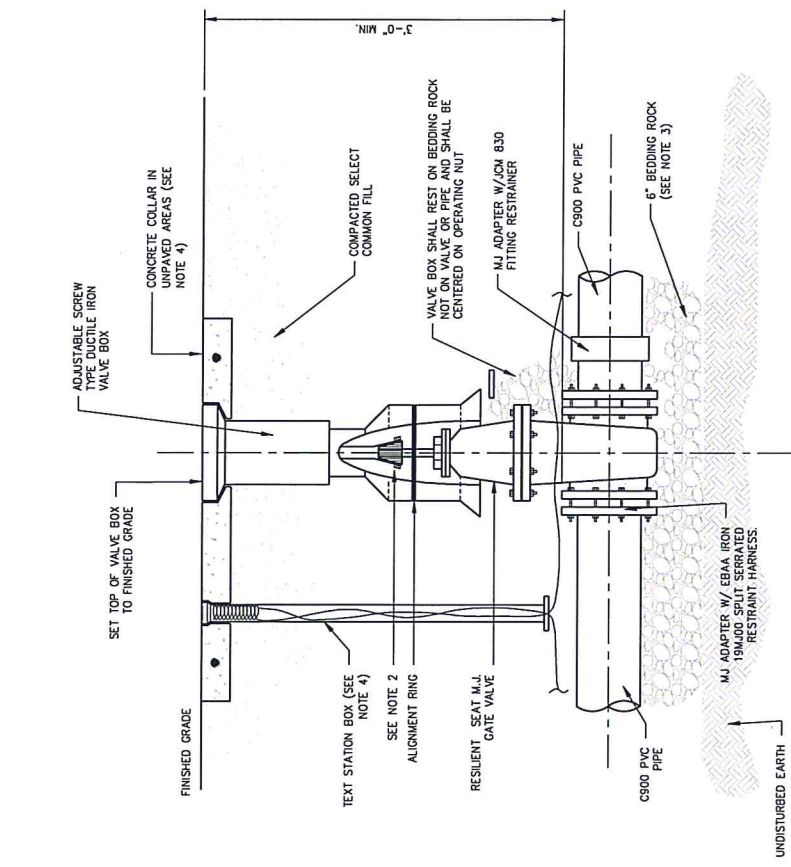
LOCATOR WIRE

1. WIRE TO BE #12 AWG. INSULATED SINGLE STAND COPPER, USE LISTED.
2. WIRE TO BE CONTINUOUS BETWEEN VALVE BOXES.
3. STRIP INSULATION FROM WIRE INSIDE VALVE BOX AND AT ALL SPLICES.
4. BARE WIRE IS NOT TO TOUCH VALVES, INTERVALS.
5. WIRE TO BE TAPED TO TOP OF PIPE AT 5 FT. INTERVALS.
6. USE 3M DBR/Y-6 SPLICE KIT FOR ALL SPLICES.

NOTES:

- A. FOR WATER MAINS 4" DIA. TO 12" DIA. PIPE SHALL BE AWMA C900 PVC PIPE; CLASS RATING SHALL BE APPROVED BY G.C.S.D. PRIOR TO INSTALLATION.
- B. FOR GRAVITY SEWER MAINS 4" DIA. TO 15" DIA., PIPE SHALL BE PVC SDR35 AND SHALL MEET ASTM D3034 STANDARDS. RUBBER SEALANT RINGS SHALL MEET ASTM D3212 REQUIREMENTS. CAMERA INSPECTION BY G.C.S.D. STAFF (OR EQUAL) SHALL BE REQUIRED FOR SEWER LINES CONSTRUCTED WITH A SLOPE OF 2% OR LESS.
- C. FOR SEWER FORCE MAINS 4" DIA. OR GREATER, PIPE SHALL BE AWMA C900 C150 PVC PIPE; HIGHER CLASS RATING MAY BE REQUIRED BY G.C.S.D. ALL MAINS LESS THAN 4" MUST BE APPROVED BY DISTRICT ENGINEER.
- D. ALL JOINTS SHALL BE COMPACTED AND INSPECTED.
- E. WATER MAINS SHALL BE PRESSURE TESTED FOR CLASS OF PIPE AT LOWEST POINT WATERLINE A 25 PSI MAX DROPP AT HIGH POINT.
- F. TERRATAPE (2" WIDE LOCATING TAPE) TO BE LABELED "BURIED WATERLINE (SEWER LINE) BELOW - GROVELAND COMMUNITY SERVICE DISTRICT".
- G. ALL TRENCHES OVER 5 FT. DEEP SHALL BE SLOPED, SHORED, BRACED, OR OTHERWISE SUPPORTED IN ACCORDANCE WITH OAL-OSHA REQUIREMENTS. C.C.S.D. ASSUMES NO RESPONSIBILITY FOR THE DESIGN OF SUCH SUPPORT SYSTEMS. IN PAVED AREAS TRENCHES CANNOT BE SIDE-SLOPED.
- H. RELATIVE COMPACTION TO BE 90% OR GREATER IN THE HAUNCH AREA OF THE PIPE FROM THE SPRINGLINE TO THE BOTTOM OF THE PIPE.
- I. ALL OTHER SEWER FITTINGS SHALL BE DUCTILE IRON. ELBOWS MAY BE USED WITH PRIOR DISTRICT APPROVAL AND SHALL NOT EXCEED 22 1/2" IN ANY CASE. ALL OTHER SEWER FITTINGS SHALL BE DUCTILE IRON.
- J. ALL NATIVE MATERIAL REQUIRES DISTRICT APPROVAL PRIOR TO USE. CONTRACTOR SHALL USE OTHER APPROVED MATERIAL IF NEEDED TO MEET COMPACTION REQUIREMENTS.
- K. USE TYPE "A" MATERIAL (SEE G.C.S.D. SPECIFICATIONS) UNLESS OTHERWISE APPROVED BY DISTRICT.
- L. ALL IMPORTED MATERIAL FOR AREAS UNDER G.C.S.D. JURISDICTION SHALL BE ASBESTOS FREE. ALL IMPORTED MATERIAL FOR AREAS UNDER COUNTY JURISDICTION SHALL COMPLY WITH COUNTY AIR POLLUTION CONTROL REQUIREMENTS REGARDING ASBESTOS.

E D C B A



NOTES:

1. C900 PVC OR DUCTILE IRON SHALL BE USED ON VALVE BOX INSTALLATION.
2. THE VALVE ACTUATING NUT SHALL BE EXTENDED TO BE WITHIN 3" BELOW FINISHED GRADE.
3. BEDDING MATERIAL SHALL CONFORM TO CLASS II AGGREGATE BASE.
4. REFER TO TECHNICAL SPECIFICATIONS AND DRAWING FOR DETAIL REQUIREMENTS.
5. THE VALVE COVER BOX SHALL BE MARKED "WATER".

1 STANDARD TRENCH DETAIL FOR WATER AND SEWER
SCALE: NOT TO SCALE

2 GATE VALVE BOX INSTALLATION
SCALE: NOT TO SCALE

PROJECT INFORMATION		DRAWING INFORMATION		APPROVALS	
PROJECT NAME	GROVELAND COMMUNITY SERVICES DISTRICT FERRETTI ROAD WATER AND SEWER LINE REPAIRS	PROJECT NUMBER	CS3573	DATE	09/20/18
PROJECT LOCATION		SCALE		DATE	09/14/2018
DESIGNED BY	AM ALFONSO MANRIQUE	CHECKED BY	PS/AM/TH	DATE	
DRAWN BY	AM	APPROVED BY	AM	DATE	
DATE		SCALE			
DATE		SCALE			



Notice of Exemption

Appendix E

To: Office of Planning and Research
P.O. Box 3044, Room 113
Sacramento, CA 95812-3044
County Clerk
County of: Tuolumne
2 S. Green St., Second Floor
Sonora, CA 95370

From: (Public Agency): GROVELAND CSD
18966 Ferretti Road
Groveland, CA 93521
(Address)

Project Title: GCSD Reservoir 2 Flume Repairs

Project Applicant: Groveland CSD

Project Location - Specific:
Ferretti Road in Groveland

Project Location - City: Groveland Project Location - County: Tuolumne

Description of Nature, Purpose and Beneficiaries of Project:
The project consists of emergency repairs to a flume that collects surface water runoff around Reservoir #2. The flume was damaged during the 2017 and 2018 storms. GCSD customers are the beneficiaries of the project.

Name of Public Agency Approving Project: Groveland CSD

Name of Person or Agency Carrying Out Project: Groveland CSD

Exempt Status: (check one):

- Ministerial (Sec. 21080(b)(1); 15268);
- Declared Emergency (Sec. 21080(b)(3); 15269(a));
- Emergency Project (Sec. 21080(b)(4); 15269(b)(c));
- Categorical Exemption. State type and section number: 14 CCR Section 15301 (b)
- Statutory Exemptions. State code number: _____

Reasons why project is exempt:
The project consists of repairing approximately 700 ft of flume that was damaged during the 2017 and 2018 storms. The repairs will not result in significant land alterations.

Lead Agency
Contact Person: Peter Kampa Area Code/Telephone/Extension: (209) 962-7161

If filed by applicant:

1. Attach certified document of exemption finding.
2. Has a Notice of Exemption been filed by the public agency approving the project? Yes No

Signature: _____ Date: _____ Title: Peter Kampa

Signed by Lead Agency Signed by Applicant

Authority cited: Sections 21083 and 21110, Public Resources Code. Date Received for filing at OPR: _____
Reference: Sections 21108, 21152, and 21152.1, Public Resources Code.

Notice of Exemption

Appendix E

To: Office of Planning and Research
P.O. Box 3044, Room 113
Sacramento, CA 95812-3044
County Clerk
County of: Tuolumne
2 S. Green St., Second Floor
Sonora, CA 95370

From: (Public Agency): GROVELAND CSD
18966 Ferretti Road
Groveland, CA 93521
(Address)

Project Title: Ferretti Road Water and Sewer Line Repairs

Project Applicant: Groveland CSD

Project Location - Specific:
Ferretti Road in Groveland

Project Location - City: Groveland Project Location - County: Tuolumne

Description of Nature, Purpose and Beneficiaries of Project:
The project consists of emergency repairs to water and sewer lines that were damaged during the March 2018 Storms. GCSO customers are the beneficiaries of the project.

Name of Public Agency Approving Project: Groveland CSD

Name of Person or Agency Carrying Out Project: Groveland CSD

- Exempt Status: (check one):
- Ministerial (Sec. 21080(b)(1); 15268);
 - Declared Emergency (Sec. 21080(b)(3); 15269(a));
 - Emergency Project (Sec. 21080(b)(4); 15269(b)(c));
 - Categorical Exemption. State type and section number: 14 CCR Section 15301 (b)
 - Statutory Exemptions. State code number: _____

Reasons why project is exempt:
The project consists of replacing approximately 100 ft of sewer line and 100 ft of water line that were damaged during the March 2018 storms. The new water and sewer lines will follow the same alignment and will have the same purpose and capacity. The reconstruction will not result in significant land alterations.

Lead Agency
Contact Person: Peter Kampa Area Code/Telephone/Extension: (209) 962-7161

- If filed by applicant:
1. Attach certified document of exemption finding.
 2. Has a Notice of Exemption been filed by the public agency approving the project? Yes No

Signature: _____ Date: _____ Title: Peter Kampa

Signed by Lead Agency Signed by Applicant

Authority cited: Sections 21083 and 21110, Public Resources Code. Date Received for filing at OPR: _____
Reference: Sections 21108, 21152, and 21152.1, Public Resources Code.