

**TO:** GCSB Board of Directors

**FROM:** Peter Kampa, General Manager

**DATE:** February 13, 2024

**SUBJECT:** Agenda Item 3Av. General Managers Report

---

#### Overview

Highlights for the period of January 9, 2024, to February 13, 2024, include the following, with additional information provided verbally and in attachments:

- After nearly four years, our contractor successfully completed the Big Creek/2G Clearwell Renovation Project, at a total cost of \$3.9 million, paid by a state grant. Both Clearwells were recoated which should last up to 50 years. The Butler Wy booster pump was replaced and upgraded, with a sound enclosure installed. The rusted and failing floor of Tank 5 was replaced with project contingency funding.
- The Sewer Collection System Replacement Project is complete within budget, and the contractor will now begin working on lift station rehabilitation under a large Change Order, attached. Also included is a change order summary sheet that shows all changes to the original construction contract. Most of the changes were the result of additional defects discovered during construction, including I&I and root intrusion into the lift station wet wells.
- Participated in the preparation, reviewed drafts and provided comments on the (293 page) [Community Wildfire Protection Plan \(CWPP\)](#), which was funded by a state grant. The Tuolumne County Firesafe Council is the lead agency for the Plan development. The CWPP identifies wildfire risks throughout the county and identifies strategies to reduce these risks. The CWPP opens the door for implementation funding in the future when the state has money again. Our comments submitted electronically are attached.
- Held four meetings of the PG&E Microgrid Incentive Program (MIP) workgroup including GCSB staff, HWY 120 Chamber of Commerce, Sierra Nevada Communications and most recently, SiteLogiq. This group also conducted an initial consultation and follow up meeting with PG&E. This item is on the agenda for additional discussion and action.
- We entered into our standard development agreement with Rivian, who is building the vehicle charging station on Main Street, and was required to relocate a fire hydrant due to a conflict with their building plans. Rivian is required to cover all costs associate with the work.
- We attended the County BOS workshop regarding the formation of a Community Facilities District (CFD) and learned that the special tax rate being established in the CFD is intended to partially fund a new fire station, apparatus and staffing in the Groveland area. This item is also on the Board's agenda.

- Received and reviewed the initial study and mitigated negative declaration ([CEQA document](#)) for a proposed small resort project titled Tiny House Village, and located 2000 feet outside the GCSO boundaries. The district had initially commented to the county stating that the project would need to annex into the district boundaries for it to receive fire and emergency services from the district. The CEQA document incorrectly states that the County Fire department will be responding to calls at the project location. This may be true with the Co-location agreement we have in place currently, but by the time this project would be approved, permitted and started, we are not certain if the county will have a staffed fire engine in Groveland, or will have adequate funding to operate its fire department as it is currently staffed. We plan to respond to the CEQA document accordingly.
- Reviewing the potential for Biomass development to feed the microgrid and reduce fire fuels loading. Reviewing the potential for Biomass-to-energy development and its ability to feed the Groveland microgrid or power GCSO facilities while also reducing biomass related fire fuels loading. Potential creation of a JPA in 2025 or 2026. The County is being encouraged to consider creation of a biomass management JPA in 2025 or 2026. Funding for the creation of the JPA and development of implementation strategies are planned to be funded by the state's Office of Planning and Research.
- Prepared for and attended a Tuolumne County Natural Resources Committee meeting on February 7, 2024 where there was much discussion regarding the potential for development of biomass inventories and a market for their removal and use to produce electricity. The Committee agenda is attached.
- Prepared for and attended a CSDA Board meeting on January 19, 2024, Legislative Committee meetings on January 26 and February 9, 2024, and both Membership and Professional Development Committees on February 2, 2024.
- Attended the County initiated Economic Development meeting held on February 5, 2024, and GCSO staff provided input on the development of an economic development plan.

#### **ATTACHMENTS**

- Sewer Project Change order
- Sewer Project change order list
- Community Wildfire Protection Plan comments
- Natural Resources Committee Agenda

#### **HYPERLINKED DOCUMENTS**

- [Community Wildfire Protection Plan \(CWPP\)](#)
- Tiny House [CEQA document](#)

**SECTION 009410  
CHANGE ORDER FORM**

**Change Order  
No. 27**

Date of Issuance: 12/7/2023

Effective Date: 12/7/2023

Project: Sewer Collection System Improvements Project	Owner: Groveland CSD	Owner's Contract No.:
Contract:		Date of Contract: June 13, 2022
Contractor: Moyle Excavation, Inc.		Engineer's Project No.: GVL 138

**The Contract Documents are modified as follows upon execution of this Change Order:**

Description: This Change Order includes the rehabilitation of the interior of the sewer lift station wet wells for lift stations

No. 5, 6, 7, 8, 9 and 10. The rehabilitation scope of work is included in the technical specifications and the enclosed quote.

**Attachments (list documents supporting change):**

Moyle Excavation Scope of Work/Quote

**CHANGE IN CONTRACT PRICE:**

**CHANGE IN CONTRACT TIMES:**

Original Contract Price:

\$3,653,429.00

Increase from previously approved Change Orders  
No. 0 to No. 26:

\$321,413.66

Contract Price prior to this Change Order:

\$3,974,842.66

Increase of this Change Order:

\$479,840.00

Contract Price incorporating this Change Order:

\$4,454,682.66

Original Contract Times:  Working days  Calendar days

Substantial completion (days or date): 335

Ready for final payment (days or date): 365

Increase from previously approved Change Orders  
No. 0 to No. 26:

Substantial completion (days): 61

Ready for final payment (days): 61

Contract Times prior to this Change Order:

Substantial completion (days or date): 396

Ready for final payment (days or date): 426

Increase of this Change Order:

Substantial completion (days or date): 42

Ready for final payment (days or date): 42

Contract Times with all approved Change Orders:

Substantial completion (days or date): 438

Ready for final payment (days or date): 468

RECOMMENDED:

By: Alfonso Manrique

Engineer (Authorized Signature)

Date: 12/7/2023

Approved by Funding Agency (if applicable):

ACCEPTED:

By: \_\_\_\_\_

Owner (Authorized Signature)

Date: \_\_\_\_\_

ACCEPTED:

By: \_\_\_\_\_

Contractor (Authorized Signature)

Date: \_\_\_\_\_

Date: \_\_\_\_\_

# Moyle Excavation, Inc.



10065B Pulpit Rock Road      [admin@moyleexcavation.com](mailto:admin@moyleexcavation.com)      P: (209)984-4268  
 Jamestown, CA 95327      [moyleexcavation.com](http://moyleexcavation.com)      F: (209)984-1615

Sent To: Brandon Cauble      Phone:      Proposal      1  
 Address: Groveland CA      Fax:      Date      12/7/2023  
 Email: [Brandon.Cauble@am-ce.com](mailto:Brandon.Cauble@am-ce.com)

Change Order Request: Wet Well Rehabilitation for LS-5 through LS-10

Item #	Description	Qty	Unit	Unit Price	Extended Price
1	<b>Lift Station 5</b> - Includes cleaning, bypassing, repair leaks, filling wet well to flow line, cutting opening for access, removing and disposing of equipment, lining the wet well, removing bypass	1	LS	\$ 70,925.00	\$ 70,925.00
2	<b>Lift Station 6</b> - Includes cleaning, bypassing, repair leaks, filling wet well to flow line, cutting opening for access, removing and disposing of equipment, lining the wet well, removing bypass	1	LS	\$ 70,925.00	\$ 70,925.00
3	<b>Lift Station 7</b> - Includes cleaning, bypassing, repair leaks, filling wet well to flow line, cutting opening for access, removing and disposing of equipment, lining the wet well, removing bypass	1	LS	\$ 70,925.00	\$ 70,925.00
4	<b>Lift Station 8</b> - Includes cleaning, bypassing, repair leaks, filling wet well to flow line, cutting opening for access, removing and disposing of equipment, lining the wet well, removing bypass, remove and install new access hatch	1	LS	\$ 137,215.00	\$ 137,215.00
5	<b>Lift Station 9</b> - Includes cleaning, bypassing, repair leaks, filling wet well to flow line, cutting opening for access, removing and disposing of equipment, lining the wet well, removing bypass	1	LS	\$ 64,925.00	\$ 64,925.00
6	<b>Lift Station 10</b> - Includes cleaning, bypassing, repair leaks, filling wet well to flow line, cutting opening for access, removing and disposing of equipment, lining the wet well, removing bypass	1	LS	\$ 64,925.00	\$ 64,925.00

**TOTAL | \$ 479,840.00**

**Notes:**

Moyle Excavation can help with many aspects of this project that involve utilities, trenching, grading, paving, and can assist with value engineering on various items such as storm drain and other possible aspects.

Work is to be scheduled and completed weather permitting. This estimate is calculated using local material sources and non-union labor rates. If an increase in material costs occurs and/or it becomes necessary to haul from an alternate source, additional charges may apply. Permits, fees, testing, and construction staking will be applied and paid for by others. Any drilling or blasting (rock removal & disposal) will be additional to this proposal. This proposal accounts for one mobilization and one demobilization; any extra mobilizations/demobilizations caused by others will be charged extra. If Moyle Employees are delayed because of other trades will bill the Contractor for a full day of work. Any delays will be tracked by Moyle Excavation on a Time & Material basis and will be submitted to the contractor on a daily basis. Interest of 1.5% per month will accrue on accounts after 30 days.



## **GCSO Sewer Collection Improvements**

### **Lift Stations 5-10 Wet Well Improvements**

#### **SCOPE:**

- **LIFT STATION 5** – Lift Station floor to be cut, Old Equipment Pulled Out, Root Intrusion and leaks to be fixed, Floor to be filled to flowline with concrete, Wet Well to be rehabilitated, Sewer Bypassing to be installed and removed by contractor.
- **LIFT STATION 6** - Lift Station floor to be cut, Old Equipment Pulled Out, Root Intrusion and leaks to be fixed, Floor to be filled to flowline with concrete, Wet Well to be rehabilitated, Sewer Bypassing to be installed and removed by contractor.
- **LIFT STATION 7** – No Cutting on LS Floor, No Equipment to be removed, Root Intrusion and leaks to be fixed, Floor to be filled to flowline with concrete, Wet Well to be rehabilitated, Sewer Bypassing to be installed and removed by contractor.
- **LIFT STATION 8** - Lift Station floor to be cut, Old Equipment Pulled Out, Root Intrusion and leaks to be fixed, Floor to be filled to flowline with concrete, Wet Well to be rehabilitated, Sewer Bypassing to be installed and removed by contractor.
- **LIFT STATION 9** - Lift Station floor to be cut, No Equipment to be removed, Root Intrusion and leaks to be fixed, Floor to be filled to flowline with concrete, Wet Well to be rehabilitated, Sewer Bypassing to be installed and removed by contractor.
- **LIFT STATION 10** - Lift Station floor to be cut, Old Equipment Pulled Out, Root Intrusion and leaks to be fixed, Floor to be filled to flowline with concrete, Wet Well to be rehabilitated, Sewer Bypassing to be installed and removed by contractor.

#### **MEANS & METHODS:**

At each lift station Moyle will remove and dispose of equipment per GCSO's direction. The wet well will be cut to either match the wet well or to provide access while keeping a platform for GCSO employees to stand on while working in the wet well.

Once the access hole is cut, we will plug the manholes that feed into the wet well, pump out the well and install a flow through plug with a 3" bypass connected to the flow through outlet that will then be pushed into the wet well outlet line and dump directly into the lift station. An example of this method is shown in the attached drawing as well as the proposed materials. Once installed, it will be GCSO's responsibility to monitor the bypass line and handle any plugging of the line or overflows during Moyle's off work hours. GCSO will indemnify Moyle in the event that a spill occurs during GCSO's Monitoring period between 3 PM and 7 AM the following day

during the work week and during weekends and holidays. From 7 AM to 3 PM Monday – Friday, Moyle will be responsible for monitoring the upstream manholes and cleanouts for spills and overflows in the areas that work is being performed. Once each section is complete, Moyle will remove the bypass lines and install in the next Wet Well to be completed.

H&R Plumbing will access the wet wells once bypass is installed and begin flushing and cleaning the surface. With the wet well cleaned and dried, they will repair any leaks in the wet well and fill the bottom with concrete to create a flow line that will direct all incoming sewage toward the lift station. Once cleaned, prepped and filled they will spray line the wet well. See H&R's Scope Letter below:

“Scope of Work:

The Lift Station Lining & Coating work includes: Preparation of interior surface of Lift Station using hydro-blasting to remove all debris, materials and loose concrete to get to a good substrate, according to product's manufacture. Repairing any existing leaks consider as weepers (if the leak are bigger than weepers, an extra charge for T&M will apply) using Mainstay ML-10, (Mainstay ML-10 is a fast-setting blend of special cements and fillers that is used to stop leaks through cracks and holes on underground concrete and brick structures) We also will inject Multigrout a single component, moisture activated blended polyurethane injection resin. Designed for sealing active water leaks in a cracks or joints in concrete structures. We will be applying up to 1" of Mainstay ML-72 (Mainstay ML-72 is a Portland cement-based, microsilica-enhanced, high-strength structural restoration and resurfacing mortar designed to be applied at a minimum of 1/4", and up to 5" on vertical and overhead surfaces) and troweled it to get a smooth finish. Spraying 100 mils of Mainstay DS-5, (Mainstay DS-5 is a 100% solids epoxy coating) We will be creating a smooth transition at the floor of the Lift Station and the walls of the Lift Station to avoid debris accumulation (Lift Station rehab is done from the floor up to the joint of fiber glass structure we will overlap the epoxy to seal the gap) Sealing, plugging, patching and coating of the Lift Station structure. Rehab is from the floor up to the fiberglass structure. \* Mainstay ML-72, ML-10, Mainstay 806 and Epoxy DS-5 are products made by the same manufacture company, therefore they are considered to be superior products.

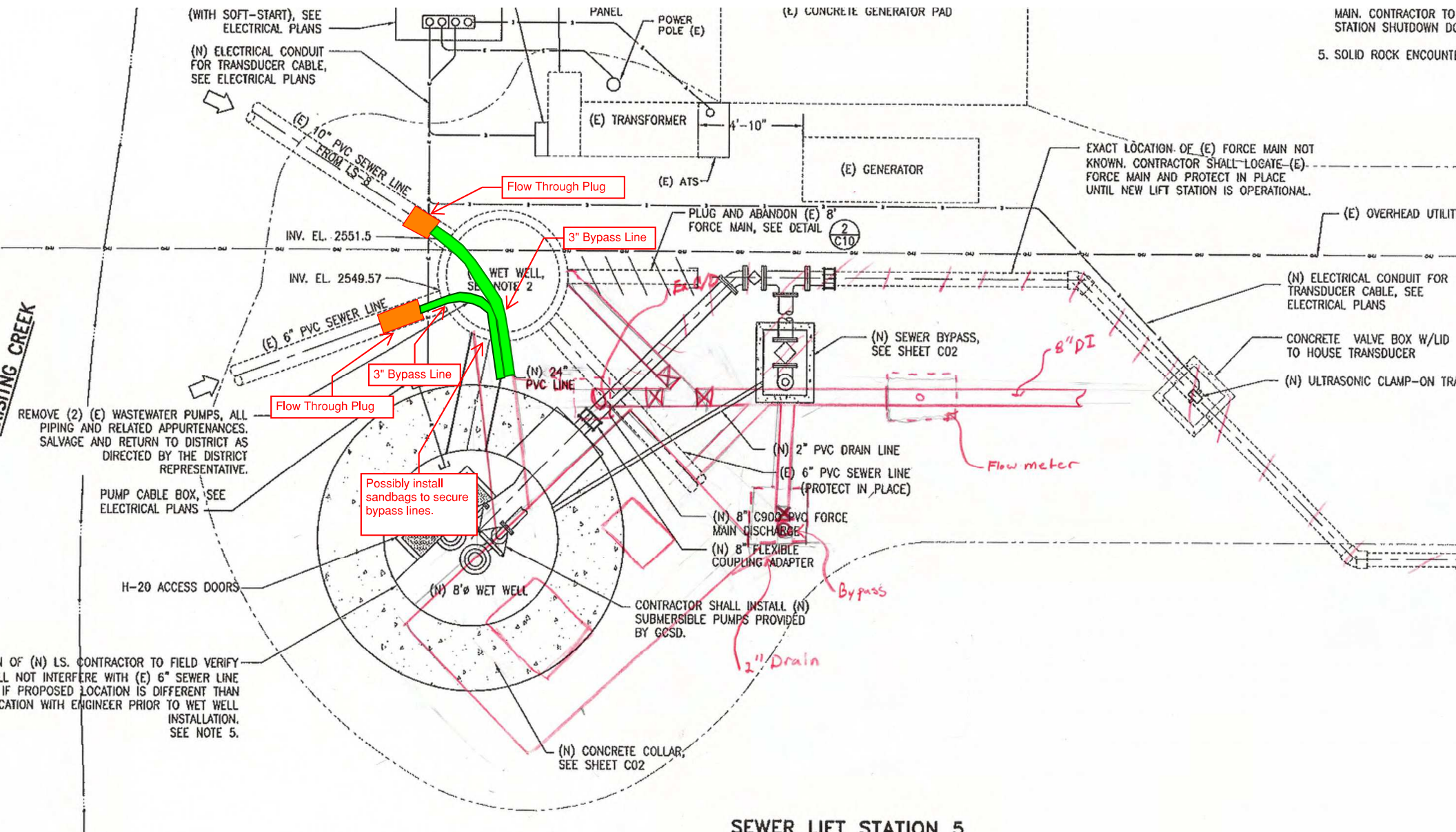
Certifications:

H & R Plumbing and Drain Cleaning, Inc. is a certified applicator by Madewell Corporation for over seven years; each one of our employees has been trained specifically to work in confined spaces and each hold a certificate issued by Enviro-Safetech per CAL OSHA GISO 5157 & 29CFR1910.146. The owner of H & R Plumbing and Drain Cleaning, Inc. is a certified Manhole Rehabilitation Inspector by NASSCO.

Warranty:

This job includes a one-year guarantee of material from the manufacture company and a one year on workmanship from H & R Plumbing and Drain Cleaning, Inc.”





MAIN CONTRACTOR TO  
 STATION SHUTDOWN D  
 5. SOLID ROCK ENCOUNTER

SEWER LIFT STATION 5

# Original Muni-Ball® Plugs



The Muni-Ball® Plug was introduced over 50 years ago and the Cherne brand continues to be the most trusted name in pneumatic plugs today. Muni-Ball® Plugs offer a full bypass allowing both testing and monitoring of piping systems. Muni-Balls® are ideal for installation and repair of residential or commercial piping systems. Cherne Muni-Ball® products can also be used for maintenance of municipal infrastructure, including sanitary and storm sewer pipe systems. Muni-Ball® plugs are durable, rugged and are effective on almost any type of pipe.



- Muni-Ball® Plugs are supplied with Schrader tire inflation valves
- Larger diameter Muni-Ball® Plugs include a removable threaded valve, allowing the user to replace with quick disconnect fittings
- Multi-Size® Muni-Ball® Plugs allow more options and less inventory
- 8", 10", 12" and 15" Sizes now include new modified plug for sewer air tests

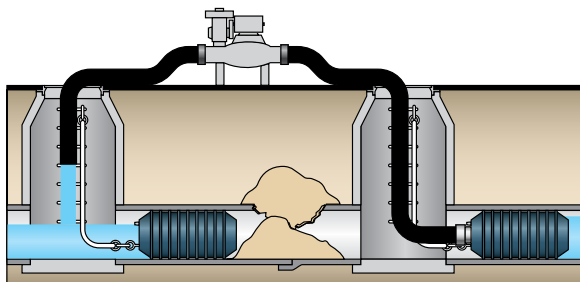
## Single Size

Part Number	Nominal Size	Bypass Diameter (NPT)	Usage Range	Maximum Back Pressure	Inflation Pressure	Product Weight	Deflated Length	Deflated Diameter	Inflation Thread	Chain / Eye bolts
262008	1.5" (40 mm)	1/4" M	1.49"-1.88" (38-48 mm)	22 psi (1,5 bar)	50 ft (15 M)	40 psi (2,8 bar)	0.3 lbs (0.2 kg)	3.8" (97 mm)	1.4" (36 mm)	Molded in Valve Removable Chain
262010	2" (50 mm)	1/8" F	1.88"-2.25" (48-57 mm)	22 psi (1,5 bar)	50 ft (15 M)	40 psi (2,8 bar)	0.4 lbs (0.3 kg)	6" (152 mm)	1.75" (44 mm)	Molded in Valve Removable Chain
262021	3" (75 mm)	3/4" F	2.62"-3.25" (67-83 mm)	22 psi (1,5 bar)	50 ft (15 M)	40 psi (2,8 bar)	1.25 lbs (0.5 kg)	8" (203 mm)	2.5" (64 mm)	Molded in Valve Removable Chain
262048	4" (100 mm)	3/4" F	3.25"-4.25" (83-108 mm)	22 psi (1,5 bar)	50 ft (15 M)	40 psi (2,8 bar)	1.5 lbs (0.7 kg)	8" (203 mm)	3.13" (80 mm)	Molded in Valve 1/4" (1)
262064	6" (150 mm)	1 1/2" F	4.50"-6.25" (144-159 mm)	13 psi (0,9 bar)	30 ft. (9.1 M)	35 psi (2,4 bar)	2 lbs (1 kg)	7" (178 mm)	4.5" (112 mm)	1/8" 1/4" (1)
262080	8" (200 mm)	3" F	7.00"-8.25" (178-210 mm)	13 psi (0,9 bar)	30 ft. (9.1 M)	35 psi (2,4 bar)	5 lbs (2.3 kg)	10" (254 mm)	6.75" (170 mm)	1/4" 3/8" (1)
262110	10" (250 mm)	3" F	9.00"-10.25" (229-260 mm)	13 psi (0,9 bar)	30 ft. (9.1 M)	35 psi (2,4 bar)	9 lbs (4 kg)	11.75" (298 mm)	8.75" (222 mm)	1/4" 3/8" (1)
262129	12" (300 mm)	3" F	10.50"-12.25" (267-311 mm)	13 psi (0,9 bar)	30 ft. (9.1 M)	35 psi (2,4 bar)	13 lbs (6 kg)	13.75" (350 mm)	10.25" (260 mm)	1/4" 3/8" (1)
262137	15" - 16" (375-400 mm)	3" F	14.0"-16.0" (356-413 mm)	13 psi (0,9 bar)	30 ft. (9.1 M)	35 psi (2,4 bar)	33 lbs (15 kg)	19.75" (502 mm)	13.75" (346 mm)	1/4" 3/8" (1)
262188	18" (450 mm)	4" F	17.5"-19.5" (445-504 mm)	13 psi (0,9 bar)	30 ft. (9.1 M)	25 psi (1,7 bar)	79 lbs (36 kg)	24.75" (629 mm)	16.9" (429 mm)	1/4" 1/2" (2)
262218	21" (525 mm)	4" F	18.55"-21.38" (479-543 mm)	13 psi (0,9 bar)	30 ft. (9.1 M)	25 psi (1,7 bar)	87 lbs (39 kg)	26" (660 mm)	18.25" (462 mm)	1/4" 1/2" (2)
262242	24" (600 mm)	4" F	22.0"-25" (558-632 mm)	13 psi (0,9 bar)	30 ft. (9.1 M)	25 psi (1,7 bar)	124 lbs (56 kg)	28.75" (730 mm)	21.25" (538 mm)	1/4" 1/2" (2)

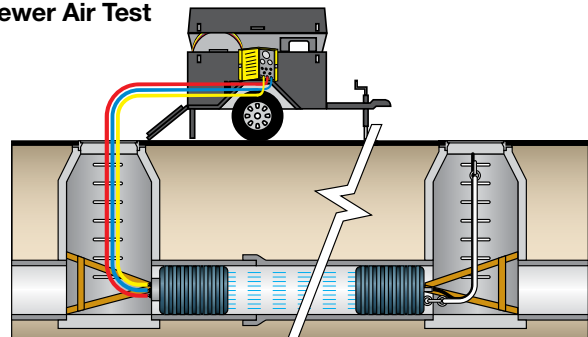
## Multi-Size

Part Number	Nominal Size	Bypass Diameter (NPT)	Usage Range	Maximum Back Pressure	Inflation Pressure	Product Weight	Deflated Length	Deflated Diameter	Inflation Thread	Chain / Eye bolts
265048	4" - 6" (100-150 mm)	3/4" F	3.75"-6.25" (95-159 mm)	17 psi (1,2 bar)	40 ft (12 M)	35 psi (2,4 bar)	2.5 lbs (1.1 kg)	10.75" (273 mm)	3.46" (88 mm)	1/8" 1/4" (1)
265068	6" - 8" (150-200 mm)	1 1/2" F	5.50"-8.35" (133-212 mm)	17 psi (1,2 bar)	40 ft (12 M)	35 psi (2,4 bar)	6 lbs (2.7 kg)	13" (330 mm)	5" (125 mm)	1/4" 3/8" (1)
265078	8" - 10" (200-250 mm)	2" F	7.00"-10.25" (178-260 mm)	17 psi (1,2 bar)	40 ft (12 M)	30 psi (2,1 bar)	9 lbs (3 kg)	14.5" (368 mm)	6.75" (171 mm)	1/4" 3/8" (1)
265098	8" - 12" (200-300 mm)	2" F	7.00"-12.25" (178-311 mm)	17 psi (1,2 bar)	40 ft (12 M)	25 psi (1,7 bar)	16 lbs (7.3 kg)	22" (559 mm)	6.75" (171 mm)	1/4" 3/8" (1)
265128	12" - 18" (300-450 mm)	4" F	10.75"-18.75" (273-477 mm)	13 psi (0,9 bar)	30 ft. (9.1 M)	25 psi (1,7 bar)	32 lbs (14.5 kg)	27.25" (692 mm)	10.5" (267 mm)	1/4"(2) 3/8" (2)

## Bypass Pumping



## Sewer Air Test





Pending Change Order Number	Description	Status	Date	Pending Change Order Number	Executed Change Order Number	Description	Status	Date	Budget Adjustment	Schedule Adjustment	Payment Included in	
1	Additional Project Improvements	Contractor Revisions	6/7/2022	4	1	T&M Trench Rock Break - MH-2004 to MH-2003	Fully Executed	7/11/2022	\$2,352.97	0.5	DR No. 4	
2	MH-101 removal	Contractor Completing	6/20/2022	2	2	MH-101 Removal	Fully Executed	7/11/2022	\$2,550.00	0.5	DR No. 4	
3	FB-105 to MH-17 - Sign Remove & relocation	Contractor Completing	6/20/2022	1	3	MH-3 to MH-4 Replacement in Lieu of Spot Repair	Fully Executed	7/11/2022	\$38,790.00	3		
4	T&M Trench Rock break - MH 2004 to 2003	Completed	6/24/2022	6	4	MH-37 to MH-38 Improvements Revision	Fully Executed	7/12/2022	(\$3,900.00)	1	DR 6	
5	T&M Culvert Replacement - MH-97 to MH-97B	Under Constructon	7/7/2022	7	5	Trash Removal Behind District Office (Trash Now - Tires Later)/MH-20 to MH-21 Potholing	Fully Executed	7/26/2022	\$5,383.50	1	DR No. 4	
6	Revisions to MH-37 to MH-38 Improvements	Completed	7/7/2022	5	6	T&M Culvert Replacement - MH-97 to MH-97B	DO NOT INCLUDE - FUNDED BY SCHOOL	8/23/2022	\$6,929.52	1	DO NOT INCLUDE - FUNDED BY SCHOOL	
7	Trash Removal Behind District Office (Trash Now - Tires Later)	Contractor Completing	7/14/2022	10	7	MH-10-24 to MH-10-20 Replacement in Lieu of Spot Repair (Remove MH-10-5 to MH-10-4 from Scope)	Fully Executed	8/11/2022	\$79,290.00	2	DR No. 4	
8	MH-123 to MH-124 (Credit/Improvement Revision)	Under Constructon	7/21/2022	8	8	MH-123 to MH-124 Improvement Revision (Credit/T&M)	Fully Executed	8/24/2022	(\$8,271.23)	1	DR No. 5	
9	FB-5-49 to MH-5-50 Improvement Revision	Pending	7/22/2022	15	9	MH-4-95 to MH-4-93 - Replace 6 LF of SDR Sewer Pipe (Spot Repair @ MH-4-95) in Lieu of Spot Repair from MH-4-275A to MH-4-93 (Wrong on Plans) & additional 6 LF replacement at MH-4-93	Fully Executed	11/8/2022	\$26,210.00	3	DR No. 5	
10	MH-10-24 to MH-10-20 Replacement in Lieu of Spot Repair (Remove MH-10-5 to MH-10-4 from Scope)	Pending	8/2/2022	16		MH-4-93 to MH-4-276 - Replace 25LF of SDR Sewer Pipe in Lieu of 6 LF (6 LF Credit tb provided)						
11	Per Each for Sewer Clean Out	Received	7/29/2022	17		MH-4-276 to MH-4-275B - Replace 55LF of SDR Sewer Pipe in Lieu of 6 LF (6 LF Credit tb provided)						
12	Creek Crossing per TUD STD 103 (MH-10-10 to MH-10-8) - 2 Lateral Improvments	Pending	8/5/2022	12	10	Creek Crossing per TUD STD 103 (MH-10-10 to MH-10-8)(+/- 30LF) - 2 Lateral Improvments	Fully Executed	3/15/2023	\$9,854.74	3	DR 6	
13	MH-48A to MH-49 spot repair in lieu of replacement	Pending District Direction	8/15/2022	19	11	Creek Crossing per TUD STD 103 (MH-1-325A to MH-1-324) - Ductile Iron Casing with concrete encasement RFI No. 3	Fully Executed	3/15/2023	\$5,640.19	1	DR 6	
14	MH-4-251 alignment revision - RFI 2	Pending	8/25/2022	23/24	12	MH-12-81 to MH-12-93 Improvement Revisions (MH-12-93 to MH-12-81 Removed 6LF Replacement & Added 25 LF Replacement) & MH-12-173B to MH-12-173A (Added 159 LF replacement) (i.e. Additional Unit 12 Improvements)	Fully Executed	3/15/2023	-\$23,472.00	0	DR 6	
15	MH-4-95 to MH-4-93 - Replace 6 LF of SDR Sewer Pipe (Spot Repair @ MH-4-95) in Lieu of Spot Repair from MH-4-275A to MH-4-93 (Wrong on Plans) & additional 6 LF replacement at MH-4-93	Pending	8/19/2022	29	13	Cleanouts & Concrete Collars	Fully Executed	3/15/2023	\$43,950.00	10	DR 6	
16	MH-4-93 to MH-4-276 - Replace 25LF of SDR Sewer Pipe in Lieu of 6 LF (6 LF Credit tb provided)	Pending	8/19/2022	30	14	Creek Crossing per TUD STD 103 (MH-1-315 to MH-1-320)	Fully Executed	3/15/2023	\$14,409.60	5	DR 6	
17	MH-4-276 to MH-4-275B - Replace 55LF of SDR Sewer Pipe in Lieu of 6 LF (6 LF Credit tb provided)	Pending	8/19/2022	28	15	Erosion Control	Fully Executed	3/15/2023	\$30,499.67	10	DR 6	
18	Creek Crossing per TUD STD 103 (MH-1-315 to MH-1-320)	CCO 14	8/19/2022	21	16	Bore & Jack replacement Revised to Conventional Replacement	Fully Executed	6/14/2023	\$31,097.00	5	To Be Included in DR 7	
19	Creek Crossing per TUD STD 103 (MH-1-325A to MH-1-324) - Ductile Iron Casing with concrete encasement RFI No. 3	CCO 11	9/6/2022	-	17	Additional BOF Improvements	Fully Executed	6/14/2023	\$69,985.01	7	To Be Included in DR 7	
20	Per Each for Manhole Concrete Collar Replacement	Received	10/10/2022	1	18	PML Shoreline MH's Revised From Replacement to Rehabilitation	Fully Executed	6/7/2023	-\$40,645.00	0	DR 7	
21	Bore and Jack Revisions	Pending	11/1/2022	1	19	Addition of One Concrete Inspection Port at Lift Station No. 10	Fully Executed	6/16/2023	\$8,305.00	1	To Be Included in DR 7	
22	Improvmnts Revisions at Golf Course (Deducted 79LF replacement from CCGC-MH-2 to CCGC-MH-3, Deducted spot repair (10LF replacement) from CCGC-MH-3 to CCGC-MH-5, added 63 LF replacement from CCGC-MH-3 to CCGC-MH-5, added replacemnt of CCGC-MH-2) (Moyle to bag/GCSD to dispose)	Canceled out	11/18/2022	-	20	Additional work/material for installation of LS 10 inspection port & replacement of LS 10 FM and credit for removing 2 check vavles from SOW	Fully Executed	8/7/2023	\$5,451.58	1	To Be Included in DR 8	
23	MH-12-81 to MH-12-93 Improvement Revisions (MH-12-93 to MH-12-81 Removed 6LF Replacement & Added 25 LF Replacement)	CCO 12	Direction Provided 1/3/23	-	21	FB-5-49 to MH-5-50 SOW revisions	Fully Executed	8/25/2023	-\$38,085.00	0	To Be Included in DR 8	
24	MH-12-173B to MH-12-173A (Added 159 LF replacement)	CCO 12	Direction Provided 1/3/23	-	22	MH-2 to MH-3 Watermain	Fully Executed	8/25/2023	\$7,161.86	1	To Be Included in DR 8	
25	12-269 to 12-134 (269' of replacement)	Pending	Pending Funding	-	23	MH-12-173A to MH-12-173B Pipeline & Culvert Replacement	Fully Executed	10/2/2023	\$71,840.00	2	To Be Included in DR 8	
26	12-134 to 12-95 ( 472' of replacement)	Pending	Pending Funding	-	24	Unit 12 Scope of Work Revisions	Fully Executed	10/2/2023	-\$28,200.00	1	To Be Included in DR 8	
27	12-21 to 12-47 (324' of replacement)	Pending	Pending Funding	-	25	8 Manhole Collar Replacement	Fully Executed	10/2/2023	\$12,400.00	1	To Be Included in DR 9	
28	Erosion Control	Pending	Pending Funding	-	26	LS 11 Spot Repair T&M	1/3 Executed	11/30/2023	-\$8,113.75	0	To Be Included in DR 10	
29	Cleanouts & Concrete Collars	CCO 13	Pending Funding	-	27	Lift Station 5, 6, 7, 8, 9 & 10 Rehabilaition	1/3 Executed	12/7/2023	\$479,840.00	42	To Be Included in DR 11	
30	Creek Crossing (MH-10-13 to MH-10-10)	Pending	Pending Funding									
									<b>Total Costs to be Refunded by Others</b>	<b>\$6,929.52</b>		
									<b>Total Contract Increase</b>	<b>\$794,324.14</b>	<b>103</b>	
									<b>Total Contract Contingency/Time of Completion</b>	<b>\$922,877.00</b>	<b>335</b>	
									<b>Total Remaining Contingency/Time of Completion</b>	<b>\$128,552.86</b>	<b>438</b>	

## Groveland CSD Comments on CWPP

January 18, 2024

Page 30, Wastewater Treatment Facilities – Groveland Community Services District provides wastewater collection from 1550 customers and operates a wastewater treatment plant located at 18966 Ferretti Rd., Groveland.

Section 3.6 LRA needs to be clarified. Groveland Community Services District operates the fire department, the Tuolumne County Fire Department(TCFD) does not have a station in Groveland. TCFD has temporarily funded an engine and crew located in the GCSD fire station. This section refers to the Groveland Fire station as “TCFD” which is incorrect, it is GCSD.

Figure 14 does not include identification of any LRA

The Section 3.6.1 table is unclear as it lists station 78 as a TCFD station and the text does not list GCSD fire. Please correct. The Groveland fire station is owned by GCSD, and in addition to a GCSD engine, has a county fire engine located under a temporary agreement.

Table 9 needs to list the GCSD and county cooperative fire protection agreements, and the GCSD agreement with county for colocation of TCFD engine and staff

Table 10 should include the Washington fire as many structures were destroyed and is an important focal point for objectives in the future.

Section 7.1 and throughout the Plan should reference the Twain Harte and Groveland CSD fire departments as well as the other fire protection districts as being responsible for planning, implementation and monitoring of the CWPP. There is no staffed Tuolumne County Fire Department station within 30 minutes of Groveland, where the only staffed station is the GCSD Fire Department.

Table 27 should include the social media links for each fire department. We suggest a **Fire District** subheading. Groveland weblinks are:

Facebook - [bit.ly/GCSD\\_Facebook](https://bit.ly/GCSD_Facebook)

Instagram - [bit.ly/GCSD-Instagram](https://bit.ly/GCSD-Instagram)

Nextdoor - [bit.ly/GCSD\\_Nextdoor](https://bit.ly/GCSD_Nextdoor)

Section 6.7 Evacuation – We suggest introducing the topic of electric vehicles and their challenges in evacuation such as limited charging infrastructure, and the frequency of power outages, especially with the PG&E Public Safety Power Shutdowns (PSPS) which at the height of wildfire season cut the power for days to weeks. In addition, the new Enhanced Powerline safety settings (EPSS) being used by PG&E can result in repeated and more frequent outages during fire season such as occurred for nearly three continuous days in Groveland on the 4<sup>th</sup> of July weekend 2023. The result was numerous disabled EVs on the road and near the charging station, which was then overloaded for a long period following power restoration. It is highly likely that in an evacuation, there will be increased traffic congestion and people stranded due to disabled EVs.

Paragraph 6.7.1 – We suggest additional language to address the population loading and fluctuations in areas with high concentrations of Short Term Rentals (STR), such as Pine Mountain Lake in Groveland where the summer weekend population, the numbers of which is not currently documented but estimated to grow from 3000 to 5000 persons. Many of the persons occupying the STRs in Groveland are visiting Yosemite NP and may not be aware of the wildfire dangers, evacuation plans, or even read or speak English.

Table 28, Responsible Agency column, where county fire is listed, it should also include fire districts and CSD fire departments as responsible to assist in implementation

Table 28 E, An Action Item should be included: In the WUI, increase the availability of firefighting water infrastructure such as fire hydrants and water delivery systems with adequate carrying capacity. The CWPP should include a map of all areas served by firefighting water infrastructure and areas recommended for improvement. (Information available in the ISO evaluations for the various communities). The county should consider amendments to its general plan and/or development standards to require connection of new residential subdivisions to adjacent public water systems and installation of fire hydrants, if available.

Table 28 G, A population study could be completed to accurately predict transient occupancy by area for the purpose of accurate evacuation traffic mapping. For example, the number of persons to be evacuated from Groveland during a summer holiday weekend is unknown due to the lack of information on the many hundreds of concentrated STR and south county resorts that could potentially be 100% occupied, many with multiple families. This should be countywide, but for certain should be included in **Table 34, FPU-F Groveland.**

Table 34, FPU-F, Objective E Wildfire Resiliency of Critical Infrastructure- Add an actions specific to the Unit:

- Consideration of a County General Plan and/or Building Standards to require that new residential subdivisions adjacent to a public water system, connect to that system and install fire hydrants, if capacity exists.
- Conduct a more granular level evacuation study to identify specific areas and communities where secondary means of egress are needed to increase evacuation capacity and access for first responders in a wildfire.
- Complete development of Emergency Preparedness Plan (EPP) for Groveland
- Continue Hazardous Fuels Reduction projects for all GCSO infrastructure.

Tuolumne County  
Administration Center  
2 South Green Street  
Sonora, California 95370  
Phone (209) 533-5521  
Fax (209) 533-6549

Heather Ryan  
*Clerk of the Board  
of Supervisors*

**BOARD OF SUPERVISORS  
COUNTY OF TUOLUMNE**

David Goldemberg, *First District*  
Kathleen Haff, *Fourth District*

Ryan Campbell, *Second District*

Anaiah Kirk, *Third District*  
Jaron Brandon, *Fifth District*

**Natural Resource Committee  
Wednesday, February 7<sup>th</sup>, 2024 @ 10:00 am  
Board of Supervisors Chambers  
2 S. Green Street, 4<sup>th</sup> Floor, Sonora, CA 95370**

**AGENDA**

1. Call the meeting to order
2. Public forum – The public may speak on any item not on the printed agenda. No action may be taken by the Committee. The amount of time allocated for the public forum is limited to 15 minutes.
3. Consideration of approving the minutes of the meeting held on January 3<sup>rd</sup>, 2024.
4. Partner agencies updates
5. Committee business
  - A. Staff reports and recommendations
    - a. Summary of California Biomass Workshop (January 31<sup>st</sup>, 2024)
    - b. Drought Resilience Plan – progress update
    - c. Consideration of the letter of recommendation renaming “Chinaman Creek”
    - d. Board of Forestry Proposes Changes for Utility Vegetation Management Activities
    - e. Grants update
  - B. Committee member reports
6. Discussion of the merit of forming a biomass utilization Joint Powers Authority
7. Discussion of [USFS Land Management Plan Direction for Old-Growth Forest Conditions across the National Forest System](#)
8. Adjourn

In accordance with Government Section 54954.3(a), the public may comment on any item on the agenda. In accordance with the Americans with Disabilities Act, if you need special assistance (i.e., auxiliary aids or services) in order to participate in this public meeting, please contact the County Administrator’s Office, (209-533-5511). Notification 48 hours prior to the start of the meeting will enable staff to make reasonable accommodations to ensure accessibility to this public meeting.



The next regular meeting is scheduled for March 6<sup>th</sup>, 2024

### Membership Roster

<b>Name</b>	<b>Position</b>	<b>Group</b>
Anaiah Kirk	Chair	County
Kathleen Haff	Vice Chair	County
Jim Phelan	Member	TCRCD
Jim Maddox	Member	F&G PFAC
Dick Gaiser	Member	TC Ag
Chris Trott	Member	At-Large
Delegate	Member	Tuolumne Me-Wuk
Delegate	Member	Chicken Ranch Me-Wuk
Delegate	Member	Hetch Hetchy
Delegate	Member	GCSD
Delegate	Member	TUD
Sean Hembree	CAO Staff	County

In accordance with Government Section 54954.3(a), the public may comment on any item on the agenda. In accordance with the Americans with Disabilities Act, if you need special assistance (i.e., auxiliary aids or services) in order to participate in this public meeting, please contact the County Administrator's Office, (209-533-5511). Notification 48 hours prior to the start of the meeting will enable staff to make reasonable accommodations to ensure accessibility to this public meeting.

Tuolumne  
County  
Administration  
Center 2 South  
Green Street  
Sonora, California 95370  
Phone (209) 533-5521

Heather Ryan  
*Clerk of the  
Board of  
Supervisors*

**BOARD OF SUPERVISORS  
COUNTY OF TUOLUMNE**

David Goldemberg, *First  
District*

Anaiah Kirk, *Third District*

Kathleen Haff, *Fourth District*

Ryan Campbell, *Second District*

Jaron Brandon, *Fifth District*

**Natural Resource Committee  
Wednesday, January 3<sup>rd</sup>, 2024 @ 10:00 am  
Board of Supervisors Chambers  
2 S. Green St., 4<sup>th</sup> Floor  
Sonora, 95370**

**Minutes**

1. Call the meeting to order  
Chair Kirk called the meeting to order at 10:00 A.M. and confirmed a quorum was present.
2. Members present: Chair Anaiah Kirk, Kathleen Haff, Jim Maddox, Jim Phelan, Dick Gaiser, Chris Trott, Adam Mazurkiewicz (Hetch Hetchy), Tony Diaz (TUD), Sean Hembree (staff)
3. Public Forum – The public may speak on any item not on the printed agenda. No action may be taken by the Committee. The amount of time allocated for the public forum is limited to 15 minutes. - None
4. Consideration of approving the minutes of the meeting held December 6<sup>th</sup>, 2023.  
Jim Phelan made a motion to approve the minutes. Jim Maddox seconded the motion. The minutes were approved unanimously.
5. Consideration of Possible Natural Resource Committee regular meeting time/date change
  - a. After Review, it was determined that no change to the recurring meeting time is necessary
6. Partner agencies updates
  - a. USFS updates: Ben Cossell reported on the status of fuel reduction projects and other activities within the Forest as well as commenting on the USFS Land Management Plan Direction for Old-Growth Forest Conditions across the National Forest System document
7. Committee Business
  - a. Staff reports and recommendations
    - i. Sean Hembree reported on Public Review of CWPP proposed draft, now

8. Committee member reports - none
9. Discussion Items
  - a. Discussion of USFS Land Management Plan Direction for Old-Growth Forest Conditions across the National Forest System
    - i. It was determined that this nationally driven document was not initiated by the Stanislaus Forest but was being incorporated into planning on the local and unit levels. A further report will be forthcoming with its implication and appropriation within the Stanislaus National Forest.
10. Adjourned: Chair Kirk adjourned the meeting at 11:40 A.M. The next meeting scheduled for February 7<sup>th</sup>, 2024.

DRAFT