



Information Provided By

O&M Manager: Luis Melchor
 Operations Supervisor: Greg Dunn
 Maintenance Supervisor: Andrew Klein
 Administration Services Technician: Rachel Pearlman

**Operations and Maintenance Report
 May 2023**

Operations Department

Wastewater Treatment Division

Influent Totals	
Total	4.20
Average	0.14
High	0.19
Low	0.08

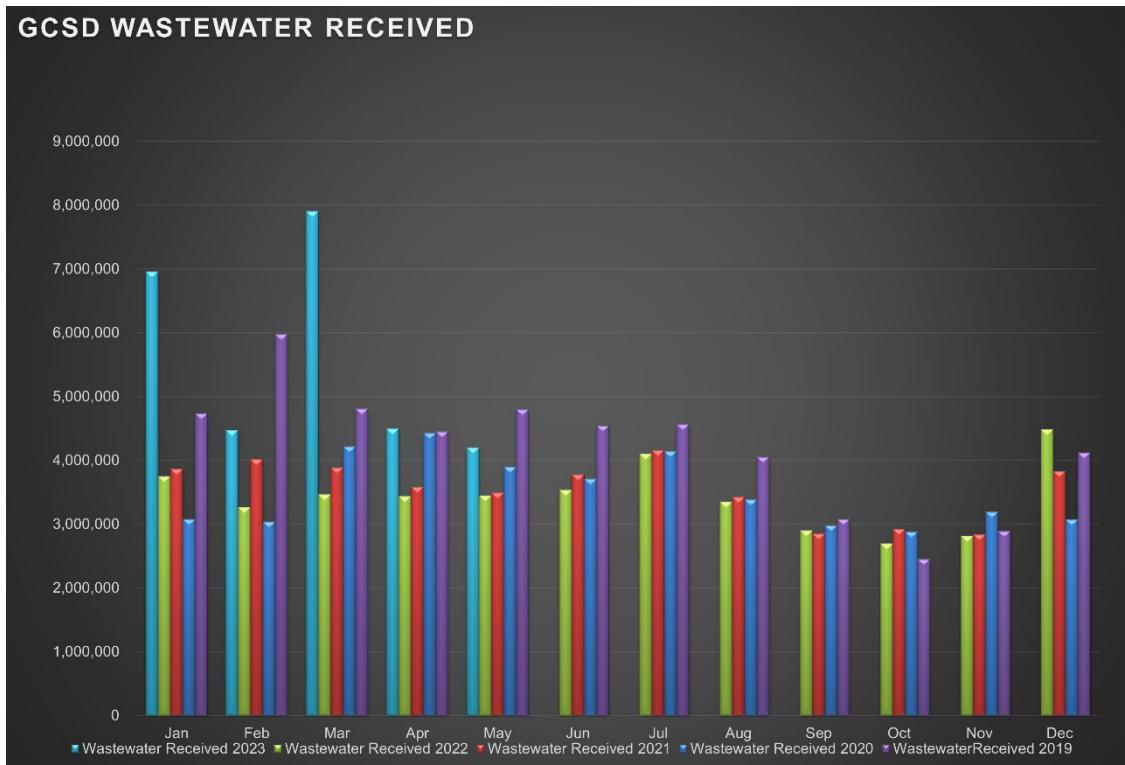
Effluent Totals	
Total	4.36
Average	0.14
High	0.20
Low	0.08

Reclamation Totals	
PML	
Spray Fields	
PML Season Total	
Spray Field Season Total	

Wasting Totals	
Total Inches	2
Total Pounds	1889
Active Accounts	1564

STP Rainfall Totals by Year During Current Month (Inches)					
Season	2023	2022	2021	2020	2019
	69.56	0.52	0.07	0.00	1.97
	High 0.20	High 0.07	High 0.00	High 1.23	High 1.88

Charted Historical Monthly Influent Totals



Wastewater Treatment Division

Routine Tasks

- Took weekly Bac-Ts and BOD of the Chlorine Contact Chamber (CCC) and sent into Alpha Lab for testing.
- Completed monthly Wastewater Report and sent to the State Water Resources Control Board
- Completed daily rounds and Lab.

Water Treatment Division

Routine Tasks

- Submitted monthly Water Treatment Report to State Water Resources Control Board
- Submitted monthly Conservation Report to State Water Boards
- Performed weekly checks and calibrations on all analyzers at 2G, BC, and AWS
- Performed monthly UV calibrations at 2G and BC.
- Took weekly Treatment Plant samples and sent them into Alpha Lab
- Monitored/sampled Distribution Tanks as needed.

Maintenance Department

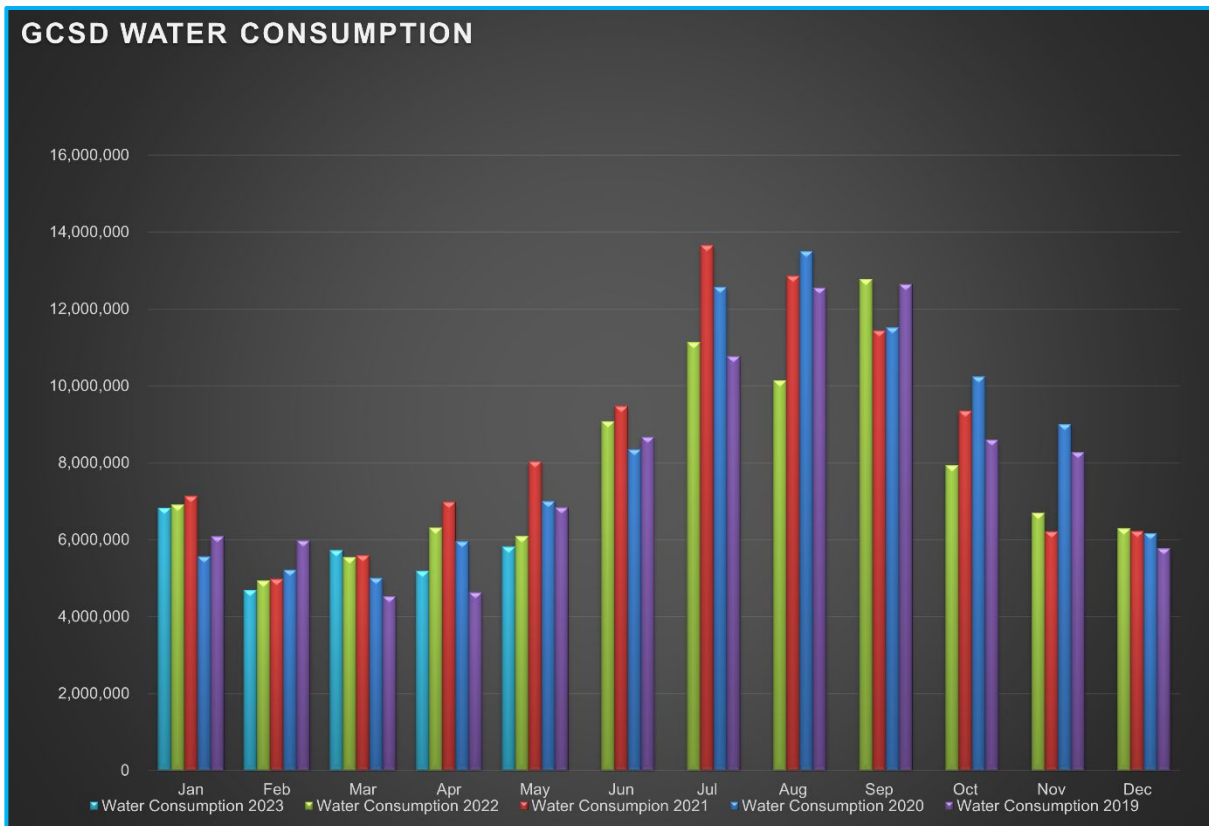
Water Distribution System Division

Meter Related Services	Total
Check / Repair Meters	9
Water Meters Installed	0
Monthly Meter Restrictions	0
Meter Lock offs	12
Meter Changeouts	0
Tenant Final Reads	5
Re-Reads	51
Meter Turn-Offs	4
Meter Turn-Ons	10
Meter Tests	1
Winterize Meter	0
Total Meter Related Issues	92

Billed Consumption (Gallons)	2023	2022	2021
Residential	5,348,795	5,670,606	7,515,456
Commercial	469,255	420,166	529,234
Total	5,818,050	6,090,772	8,044,690

Active Accounts	3267
------------------------	------

Charted Historical Monthly Water Consumption



Maintenance and Repair Data

Description	Total
Water Main Leaks / Repairs	1
Water Service Line Leaks / Repairs	1
Fire Hydrant Repairs / Replacements	0
Number of Hydrants Flushed	7
Number of Dead-Ends Flushed	2
Water Valves Exercised	4
GIS Points	0

Description	Gallons
Flushing for Water Quality	4,500
Water Loss Due to Leaks / Breaks	200

After-Hours Calls (Hours)				
Water	Sewer	Park	Other	Total
5	6	3	0	14

Maintenance and Repair

- **Routine Tasks**
 - Read all District Water Meters
 - Customer Service Calls (Low / High Pressures, No Water, Turn-Ons / Turn-Offs, Etc.)
 - Underground Service Alert (USA) Utility Marking Program
 - Weekly Pump Station Inspections at Tank 2, Tank 4, Tank 5 (Buildings, Tanks, Motors, Pumps, Drives, Communications, Generators, and Auxiliary Equipment)
 - Lock offs for non-payment.

- **Tanks and Pump Stations**
 - Tank 4: Reinstall rebuilt pump and motor #2.

- **Distribution System**
 - Water Distribution System Flushing, Unit 13 and Merrill/Highlands area.
 - Repair leaking water main at 17660 School St
 - Repair leaking water service line manifold at U13/L361 on Tower Peak Ct

Pictures

Wastewater Collection System Division

Description	Total
Manholes Inspected	94
GIS Points	0
Customer Complaint	9
Odor Complaints	0

Description	Total
Flushing/Jetting (Feet)	800
Video Inspection (Feet)	185

Description	Total
Sanitary Sewer Spills (SSO)	0
SSO Gallons Spilled	0

Maintenance and Repair

- **Routine Tasks**
 - Weekly lift station site inspections (PMCS)
 - Added degreaser and odor control to lift stations.
- **Lift Stations**
 - Cleaned and Inspected: LS1, LS2, LS3, LS4
 - Manhole Inspections LS6 and LS8.
 - Lift Station 11 – R&R Soft Start pump control.
 - Lift Station 10 – Reprogrammed P1 Soft Start.
 - Lift Station 13 – Pump and vac to assist with CIP project.
 - LS 6 – Diagnose level alarms. R&R pressure transducer. Reset and tested.
 - Tested ATS (transfer switch) operation under pump load at LS1, LS3, LS5, LS6, LS11, LS12, LS13, LS14, and LS15.
 - Installed odor control blocks at LS5, LS6, LS7, LS 8, and LS13.
- **Collection System**
 - Flushed/Jetted gravity sewer line areas.
 - Groveland, Bass Pond, Twin Pines Easement Manhole inspections.
 - Clean MH frame and covers to mitigate odor. This was primarily odor complaints after contractor work.
 - Brush control on force main easement/Hetch Hetchy RR Grade.

Pictures

Parks Division

Maintenance and Repair

- **Mary Laveroni Community Park**
 - Landscape Maintenance
 - Install shade canopies near the stage area.
 - Tree work
 - Daily trash and bathroom maintenance
- **Ballfield & Dog Park**

General Maintenance Division

Maintenance By Department

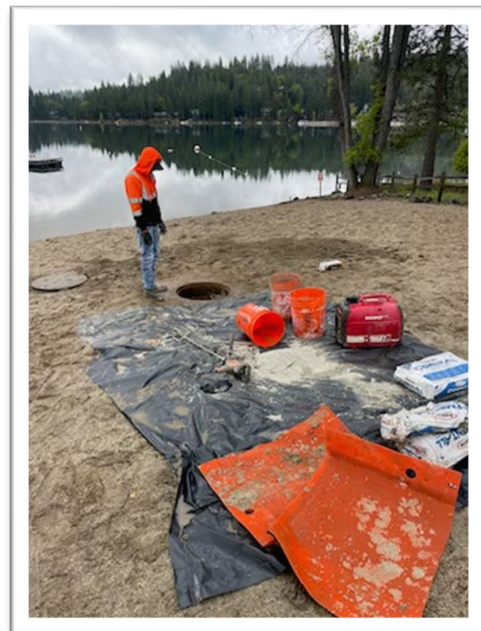
- **Operations Department**
 - 2G Water Treatment Plant
 - Regrade drainage around flow meter vault to mitigate flooding.
 - Big Creek Water Treatment Plant
 - Repair lime mixer.
 - Reset and grease booster motor and pump.
 - AWS
 - STP
 - R&R motor and coupler on reclaimed water system.
 - Repair OSG system.
 - R&R belt on roto strainer.
- **Maintenance Department**
 - Equipment
 - Shop tool maintenance and cleaning.
 - Monthly Inspect and run at operating temperatures...
 - Rain for Rent, Sullair, Vactron, Cement mixer, Light Tower, STP generator, Dunn Ct Generator, AWS Generator, Standby Generator, Highlands Generator.
 - Vehicles
 - 51618: Repair winch
 - 52331: Lube, Oil, and change filters.
 - 38010: Inspect and top off fluids, adjust idle.
 - 20420: Inspect and charge battery.
 - 70981: 90 Day Inspection. Adjust PTO and test.
 - 70983: 90-Day Inspection.

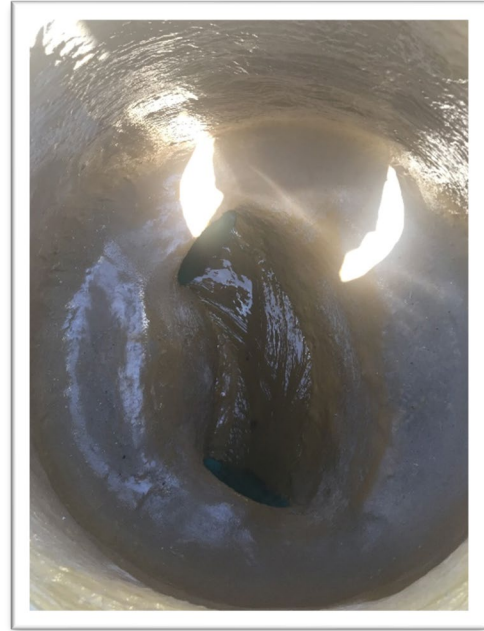
- 70987: 90-Day Inspection. R&R air drier purge valve.
 - 82330: Initial 90-day inspection. Found and repaired loose coolant hose brackets, fuel line leak, and loose exhaust pipe mounts and clamps. Performed exhaust regen. Found 9 codes present on auxiliary engine. Called and scheduled service with dealer (warranty).
 - 60523: 90-Day inspection, replace GCSD Decals. R&R turbo boost sensor.
 - 60524: 90-Day inspection, replace GCSD Decals.
 - 50415: Diagnose and replace throttle body.
 - 68622: 90-Day Inspection.
 - 42127: Lube, Oil, and filter. Brake inspection, and rotated tires.
- Buildings & Yard
 - Repair shop roll-up door.
 - Adjust, align, and lube chain on entry gate to GCSD maintenance area.
 - General yard cleanliness.
 - Vegetation management.
 - Spray field 4 and field adjacent to church.
 - Spray field #1
 - Downed tree work

Contracted Work

- Sewer Xpress
 - CIP project – Manhole lining.

Manhole Lining





- Moyle Excavation
 - Asphalt Replacement – Big Creek WTP
 - Asphalt repair and additions – Operations, and C&D/Maintenance shop area.

Workplace Safety and Training

- Routine Safety Meetings
 - Daily Tailgate Meetings
 - Weekly Safety Meetings
 - Weekly Security Checks
 - Weekly Vehicle Inspection

- Waterway sampling training.
 - DFK Solutions provided a 1-hour class via zoom.

Our New Equipment

Truck 33

2023 Peterbilt 537 7-Yard dump truck. This truck is equipped with a Paccar Diesel motor and 10-speed manual transmission. This is an amazing addition to our fleet as it replaces a 1986 dump truck with close to 490,000 miles on it.

