



Information Provided By

O&M Manager: Luis Melchor
 Operations Supervisor: Stacy Billings
 Maintenance Supervisor: Andrew Klein
 Administration Services Technician: Rachel Pearlman
 Utility Billing Specialist: Meghan Atkins

**Operations and Maintenance Report
 December 2024**

Operations Department

Wastewater Treatment Division

Influent Totals	
Total	3.70
Average	0.12
High	0.18
Low	0.07

Effluent Totals	
Total	3.73
Average	0.12
High	0.18
Low	0.07

Reclamation Totals	
PML	
Spray Fields	
PML Season Total	
Spray Field Season Total	

Wasting Totals	
Total Inches	124
Total Pounds	1532
Active Accounts	1570

STP Rainfall Totals by Year During Current Month (Inches)					
Season	2024	2023	2022	2021	2020
	4.65	2.68	18.41	12.47	3.41
	High 1.00	High 0.80	High 4.10	High 2.50	High 0.82

Charted Historical Monthly Influent Totals

Wastewater Treatment Division

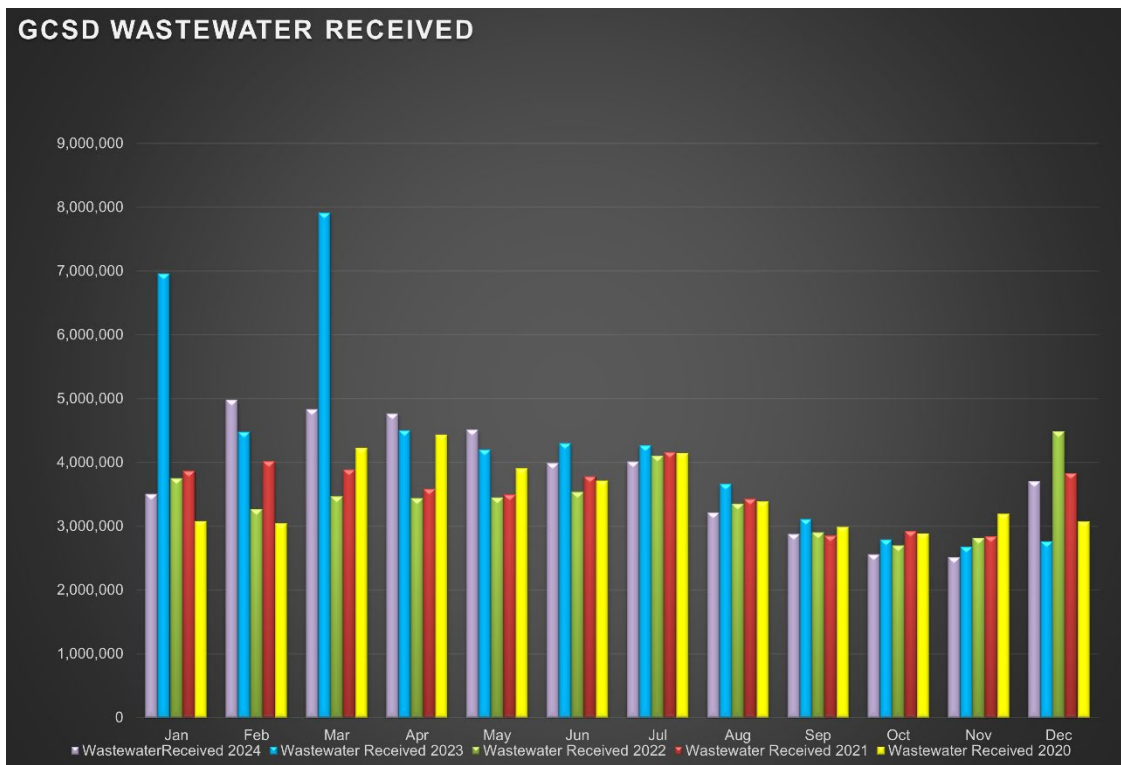
Routine Tasks

- Took weekly Bac-Ts and BOD of the Chlorine Contact Chamber (CCC) and sent into Alpha Lab for testing.
- Completed monthly Wastewater Report and sent to the State Water Resources Control Board
- Completed daily rounds and Lab.

Water Treatment Division

Routine Tasks

- Submitted monthly Water Treatment Report to State Water Resources Control Board
- Submitted monthly Conservation Report to State Water Boards
- Performed weekly checks and calibrations on all analyzers at 2G, BC, and AWS
- Performed monthly UV calibrations at 2G and BC.
- Took weekly Treatment Plant samples and sent them into Alpha Lab
- Monitored/sampled Distribution Tanks as needed.



Maintenance Department

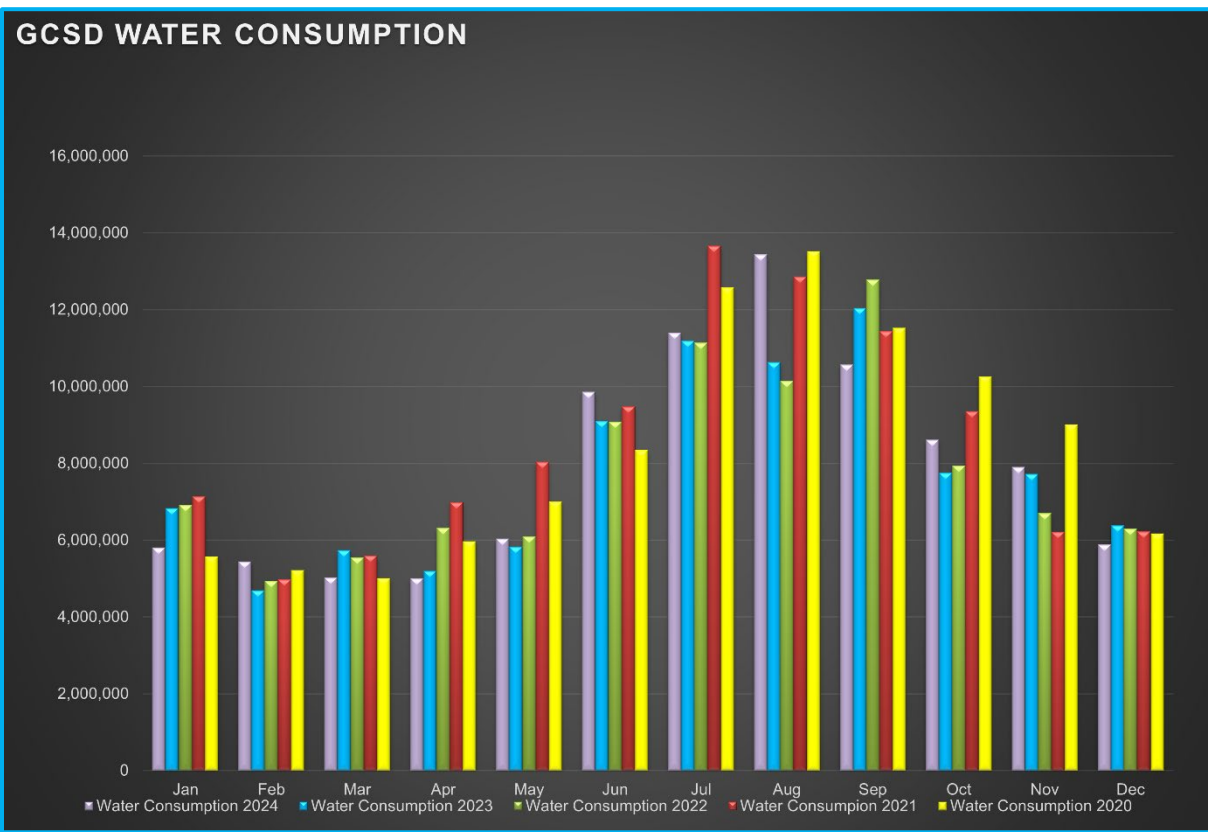
Water Distribution System Division

Meter Related Services	Total
Check / Repair Meters	6
Water Meters Installed	0
Monthly Meter Restrictions	0
Meter Lock offs	4
Meter Changeouts	4
Tenant Final Reads	2
Re-Reads	12
Unusual Consumption	15
Meter Turn-Offs	2
Meter Turn-Ons	5
Meter Tests	2
Winterize Meter	0
Color/Taste/Odor/PSI Complaints	3
Total Meter Related Issues	55

Active Accounts	3274
------------------------	------

Charted Historical Monthly Water Consumption

(Gallons)			
Residential	5,358,732	6,011,530	5,869,502
Commercial	527,993	368,547	425,835
Total	5,886,725	6,380,077	6,295,337



Maintenance and Repair Data

Description	Total
Water Main Leaks / Repairs	1
Water Service Line Leaks / Repairs	0
Fire Hydrant Repairs / Replacements	0
Number of Hydrants Flushed	7
Number of Dead-Ends Flushed	7
Water Valves Exercised	0
GIS Points	0

Description	Gallons
Flushing for Water Quality	3,200
Water Loss Due to Leaks / Breaks	12,700

After-Hours Calls (Hours)				
Water	Sewer	Park	Other	Total
7	5	1	2	15

Maintenance and Repair

- **Routine Tasks**
 - Read all District Water Meters
 - Customer Service Calls (Low / High Pressures, No Water, Turn-Ons / Turn-Offs, Etc.)
 - Underground Service Alert (USA) Utility Marking Program
 - Weekly Pump Station Inspections at Tank 2, Tank 4, Tank 5 (Buildings, Tanks, Motors, Pumps, Drives, Communications, Generators, and Auxiliary Equipment)

- Lock offs for non-payment.
- Unusual Usage meter reads.

- **Tanks and Pump Stations**

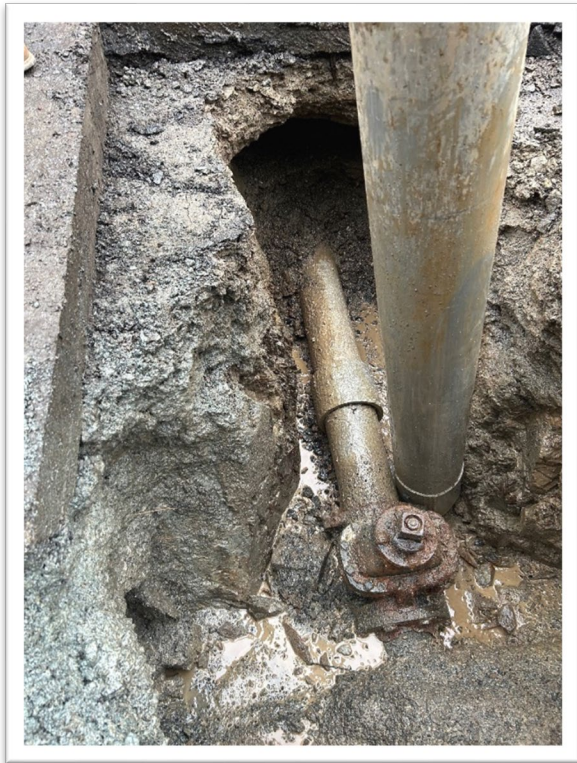
- Generator and booster pump testing at Tank 2.

- **Distribution System**

- Repair hydrant lateral at 19000 Jimmie Bell St.
- Repair manifold failure at 19003 Crocker Station Rd.

Pictures

Broken hydrant lateral pipe on Jimmie Bell St



Wastewater Collection System Division

Description	Total
Manholes Inspected	120

GIS Points	0
Customer Complaint	3
Odor Complaints	1

Description	Total
Flushing/Jetting (Feet)	3338
Video Inspection (Feet)	2296

Description	Total
Sanitary Sewer Spills (SSO)	0
SSO Gallons Spilled	0

Maintenance and Repair

- **Routine Tasks**
 - Weekly lift station site inspections (PMCS)
 - Added degreaser and odor control to lift stations.

- **Lift Stations**
 - Cleaned and Inspected: LS5, LS6, LS7, LS8, LS9, LS10, LS11, LS12
 - Manhole Inspections: LS15
 - Remove roots and debris found during manhole inspections.
 - Maintain odor control chemical dosing pumps at LS6, LS8, LS11, LS13.

- **Collection System**
 - Flushed/Jetted gravity sewer line areas.
 - Groveland, Bass Pond, Twin Pines Easement monthly manhole inspections.
 - Dosed sanitary system with caustic soda for PH at WWTP.
 - Raised flushing branch to grade at 21180 Jimmersall Ln.

Pictures

Another buried flushing branch we had to go locate and bring to grade.



Maintenance By Department

- **Operations Department**

- 2G Water Treatment Plant
- Big Creek Water Treatment Plant
- Butler Bypass Pump Station
- AWS
 - Torqued pump shaft packing at Dunn Ct.
 - Inspected, cleaned, and tested ARV.
- STP
 - Clear clogs on irrigation pump.
 - Cleared jam on press liquid recycle pump.
 - Repaired spray field irrigation.
 - R&R new VFD's for influent pumps.
 - R&R drum rotation sensor plates on headworks screens.
 - R&R electric water valve on screen #2.
 - Washed down screen #1.

- **Maintenance Department**

- Equipment
 - Shop maintenance and cleaning.
 - Monthly Inspect and run at operating temperatures...
 - Rain for Rent, Sullair, Vactron, Cement mixer, Light Tower, STP generator, Dunn Ct Generator, AWS Generator, Standby Generator, Highlands Generator.
- Vehicles
 - 52229: R&R wiper blades.
 - 51618: R&R battery.
 - 50817: Clean out and prepare for auction.
 - 50415: Clean out and prepare for auction.
 - 42128: Repair tire
 - 62026: R&R tires.
 - 52335: Oil, lube and air filter.
 - 50810: Install snowplow.
- Buildings & Yard
 - General yard cleanliness.
 - Vegetation management.
 - R&R fluorescent to LED bulbs in shop and C&D building.
 - Repaired chlorinator sheds at T2 and T4.

Pictures

Parks Division

Maintenance and Repair

- **Mary Laveroni Community Park**
 - Landscape Maintenance.

- **Ballfield & Dog Park**
 - Seed and top dress ballfield

Contracted Work

- **Njirich Construction**
 - Water main extension – Harper Rd.
 - Tank 5 site work for new tank.

Workplace Safety and Training

- **Routine Safety Meetings**
 - Daily Tailgate Meetings
 - Weekly Safety Meetings
 - Weekly Security Checks
 - Weekly Vehicle Inspection

- **Du All Safety**
 - Hearing conservation, Silica, Respiratory Protection, Bloodborne pathogens, Fall Protection and Ladder Safety Training.

- **OCT Water Quality Academy training at TUD – December 10th-12th.**
 - Water Distribution – 5 Employees
 - Water Treatment – 3 Employees
 - Pumps and Motors – 2 Employees