



TO: GCSB Board of Directors

FROM: Peter J. Kampa, General Manager

DATE: January 11, 2022

SUBJECT: Agenda Item 6B: Adoption of a Resolution Approving an Addendum to the Mitigated Negative Declaration for the Downtown Groveland and Big Oak Flat Sewer Collection System Improvements Project

RECOMMENDED ACTION:

I move to adopt Resolution 04-2022 approving the Addendum to the Mitigated Negative Declaration for the Groveland Community Services District's Downtown Groveland and Big Oak Flat Sewer Collection System Improvements Project (State Clearinghouse #2019059053).

BACKGROUND:

The proposed document recommended for approval is an Addendum to the Groveland Community Service District's Downtown Groveland and Big Oak Flat Sewer Collection System Improvements Project (Approved Project) Mitigated Negative Declaration (IS/MND), adopted in June 2019 (State Clearinghouse #2019059053), by the Groveland Community Services District (District). After filing the Notice of Determination in June 2019 for the Approved Project, minor changes were made to the Project which included adding some additional improvements (pipelines, manholes, staging areas, and other related components). These additional components of the Project were not included in the original IS/MND and thus were evaluated in the Addendum. These additional Project components, when combined with the Approved Project, will result in the installation of approximately 0.6 miles of pipelines using cured-in-place methods and approximately 1.6 miles of open trench replacement pipelines. A total of 65 manholes will be installed, replaced, sealed or rehabilitated.

Use of an Addendum

Because no new significant impacts will result from the modifications to the Project, as described below, it was determined that an Addendum to the previous IS/MND is the appropriate level of CEQA documentation (CEQA Guidelines Sections 15162 and 15164). An Addendum may be prepared if only minor changes are necessary and the environmental and regulatory setting is substantially the same. An Addendum shall be included in or attached to the previous IS/MND.

The District shall conduct a public review, and consider the Addendum along with the previous IS/MND prior to making a decision on the Project. Once adopted, the Addendum, along with the previous IS/MND is placed in the Administrative Record, a Notice of Determination is filed with the Tuolumne County Clerk and the State Clearinghouse, and the CEQA process is complete.

PROPOSED ACTIONS

Project Overview

Groveland CSD proposes to install and replace sewer mains and associated infrastructure in the communities of Big Oak Flat, Groveland, and Pine Mountain Lake. An Engineering Design Report entitled “Downtown Groveland and Big Oak Flat Sewer Collection System Improvements” was prepared by AM Consulting Engineers in May 2017 to address the needed improvements. Additional improvements (such as additional sewer pipelines, manholes and related improvements) were added to the Project and were environmentally evaluated in the Addendum.

The Project is needed to prevent sewer system blockages and sanitary sewer overflows and to provide adequate and reliable sewer service to District customers. The District’s existing treatment and collection system was built in 1941. Significant additions were made in 1982 and the system was last upgraded in 1990. The sewer collection system is aged and some of the older portions of the system experience blockages and require cleaning. The physical condition of some of these sewer lines is suspected to be poor, in some instances they may be beyond their life expectancy and may need to be replaced or rehabilitated. Indicators of these conditions are failing manholes and infiltration and inflow issues in recent years. The District maintains sewer assets in accordance to industry standard practices by performing preventive maintenance on mechanical equipment and pipelines.

Project Description

The following is the Project Description that was included in the original 2019 IS/MND:

“The Project involves sewer system improvements in Big Oak Flat, Groveland and Pine Mountain Lake. Specifically, the Project is broken down as follows:

Sewer system improvements in Big Oak Flat:

- Replace approximately 455 linear feet of 6-inch sewer pipe using open trench excavation methods.
- Rehabilitate approximately 792 linear feet of 6-inch sewer pipe using trenchless cured-in-place methods.
- Perform spot repairs to resolve pipe anomalies at two locations.
- Construct new manholes.
- Bring existing manhole lids up to grade.
- Install sealed or locking manhole lids.

Sewer system improvements in Groveland:

- Replace approximately 408 linear feet of 8-inch sewer pipe and 258 linear feet of 6-inch sewer pipe with open trench excavation methods.
- Rehabilitate approximately 1,413 linear feet using trenchless cured-in-place methods.
- Rehabilitate and install sealed or locking manhole lids.

Sewer system improvements in Pine Mountain Lake:

- Replace approximately 2,715 linear feet of 6-inch sewer pipe using open trench excavation methods.
- Perform spot repairs in sections where pipe abnormalities were detected.

Construction methods

Cured-in-place method uses a flexible fiberglass fabric liner coated with a thermosetting polyester resin to form a new pipe inside an existing pipe. The liner is inserted into the existing pipe through existing manholes and cured to form a new liner. The fabric liner holds the resin in place until a tube is inserted in the pipe to be cured.

Polyvinyl chloride (PVC) pipe will be used for sewer pipe replacement work.

Installing new manholes will require: (1) excavating to the depth needed to install the new manhole to new or existing sewer main infrastructure, (2) installing the concrete manhole chamber, (3) connecting new or existing sewer mains, (4) backfill excavations, and (5) restoring the soil surface. Rehabilitating manholes will involve applying a polymer coating to the interior surface of the manhole chamber. Bringing manhole lids to grade will consist of installing a concrete riser column then restoring the soil surface to match the existing grade. Installing sealed or locking manhole lids will involve altering existing concrete collars to accommodate the new locking lids.”

Updates to the Original IS/MND Project Description

Minor changes were made to the Project which included adding some additional improvements (pipelines, manholes, staging areas, and other related components). These components are depicted in the engineering drawings in Figures 5 through 7 of the Addendum (the new components are shown in red). These additional components, when combined with the Original Project, will result in the installation of approximately 0.6 miles of pipelines using cured-in-place methods and approximately 1.6 miles of open trench replacement pipelines. A total of 65 manholes will be installed, replaced, sealed or rehabilitated.

Project Schedule

Construction is expected to begin in July 2022 and end in June 2023.

ENVIRONMENTAL REVIEW

As demonstrated in the Addendum, there are no additional significant impacts that result from these additional Project components and the IS/MND continues to serve as the appropriate document addressing the environmental impacts of these changes, pursuant to

California Environmental Quality Act (CEQA). As such, the Addendum was sent to the State Clearinghouse on December 9, 2021 for a 30+ day public review period which ended on January 11, 2022 and a public review will occur on January 11, 2022.

The Addendum was prepared by Crawford & Bowen Planning, Inc. under the direction and supervision of the District's Project Engineer AM Consulting Engineers. The Addendum outlined the current Project description and included a comparison of impacts analyzed in the 2019 MND and whether or not there were changes in impacts and/or new impacts resulting from the changes to the Project description. The Addendum did not identify any new significant environmental impacts.

Once the public review occurs and the Addendum is adopted, the District's consultants will submit an Environmental Package to the State Water Board which contains all of the documents needed to satisfy the Boards environmental requirements.

FINANCIAL IMPACT

The Groveland CSD has received a Clean Water State Revolving Fund (CWSRF) grant/loan in the amount of \$5,845,568.00, \$4,384,176.00 of which is grant and 1,461,392.00 of which is loan. The loan portion has a 1.4% interest rate for 30 years. The total project cost is \$3,651,646 and therefore shall not have any fiscal impact.

ATTACHMENTS:

1. Resolution 04-2022
2. CEQA Addendum and Attachments

RESOLUTION NO. 04-2022

A RESOLUTION OF THE BOARD OF DIRECTORS OF THE GROVELAND COMMUNITY SERVICES DISTRICT TO APPROVING AN ADDENDUM TO THE MITIGATED NEGATIVE DECLARATION FOR THE DOWNTOWN GROVELAND AND BIG OAK FLAT SEWER COLLECTION SYSTEM IMPROVEMENTS PROJECT

WHEREAS, the Board of Directors of the Groveland Community Services District (the “Board” and “District”, respectively) has received and reviewed the proposed Addendum to the 2019 Mitigated Negative Declaration (State Clearinghouse #2019059053), for the District’s Downtown Groveland and Big Oaks Flat Sewer Collection System Improvements Project, including the 2019 adopted Mitigated Negative Declaration with appendices, and supporting information sources (collectively, the “Addendum”) together with the staff report and any related studies (collectively, the “Environmental Record”) for the proposed construction and operation of the Downtown Groveland and Big Oaks Flat Sewer Collection System Improvements Project (the “Project”), as described in the Addendum; and

WHEREAS, the District is the lead agency for purposes of environmental review of the Project under the California Environmental Quality Act (“CEQA”), pursuant to Public Resources Code § 21000 et seq., and the State “Guidelines for Implementation of the California Environmental Quality Act”; and

WHEREAS, the Project could, without mitigation, have resulted in a potential impact to certain areas of environmental concern, including Biological Resources and Cultural Resources; and

WHEREAS, the District has prepared mitigation measures to address and mitigate all potential environmental impacts to a “less than significant” level, which is a part of the Environmental Record reviewed and considered by the District; and

WHEREAS, the District has incorporated the mitigation measures described in the Addendum as conditions of approval by the District; and

WHEREAS, with the exception of the potential impacts stated above, there are no other potentially significant environmental impacts resulting from the Project; and

WHEREAS, the District prepared the Addendum in accord with CEQA Guidelines Sections 15162 and 15164; and

WHEREAS, the District sent the Addendum to the California State Clearinghouse for a 30-day public review period from December 9, 2021 to January 11, 2022; and

WHEREAS, the District conducted a public review on said Addendum at its Board Meeting on January 11, 2022; and

WHEREAS, The District has considered the Addendum along with the previously adopted 2019 Mitigated Negative Declaration, technical studies, and other information in the Environmental Record; and

WHEREAS, the District has determined that the conclusions of the analysis in the Addendum remain consistent with those made in the 2019 Mitigated Negative Declaration and that no new significant impacts will result and there will be no substantial increase in severity of impacts that result from those previously identified in the 2019 Mitigated Negative Declaration.

THEREFORE, BE IT RESOLVED that the Board finds, determines and resolves as follows:

SECTION 1. The Board adopts the foregoing recitals as true and correct.

SECTION 2. The Board finds that the Addendum reflects the independent judgment of the District as the lead agency for the Project.

SECTION 3. The Board finds that it has independently reviewed and considered the Environmental Record, including the Addendum.

SECTION 4. On the basis of the Environmental Record as the whole record before the Board, including the Addendum, the Board finds, in its independent judgment and analysis, that there is no substantial evidence the Project will have a significant effect on the environment.

SECTION 5. The Board confirms that the mitigation measures described in the Addendum have been incorporated into the Project and adopts the Addendum as the final CEQA document for the Project, which are a part of the Environmental Record before the Board for the Project.

SECTION 6. The Board approves and adopts the findings set forth herein, and the Addendum, based on the Environmental Record.

SECTION 7. District staff is authorized and directed to cause a Notice of Determination concerning the adoption of the Addendum for the Project to be filed in the office of the Tuolumne County Clerk and with the Office of Planning and Research in accordance with CEQA and State CEQA Guidelines.

This foregoing resolution is hereby approved and adopted at a regular meeting the Board of the Groveland Community Services District held on the 11th day of January, 2022, by the following vote:

AYES:

NOES:

ABSTAIN:

ABSENT:

ATTEST:

Rachel Pearlman, Board Secretary

APPROVE:

Janice Kwiatkowski, Board President

ADDENDUM -
MITIGATED NEGATIVE
DECLARATION

Downtown Groveland and Big
Oak Flat Sewer Collection
System Improvements
SCH #2019059053

December 2021

PREPARED FOR:

Groveland Community Services District
18966 Ferretti Road
Groveland, CA 95321

PREPARED BY:



Crawford & Bowen Planning, Inc.
113 N. Church Street, Suite 302
Visalia, CA 93291

TABLE OF CONTENTS

SECTION ONE – INTRODUCTION.....	2
1.1 Addendum Purpose.....	2
1.2 Environmental Analysis and Conclusions.....	3
1.3 Incorporation by Reference.....	3
1.4 Addendum Process.....	3
SECTION TWO – PROJECT DESCRIPTION.....	4
2.1 Location and Setting.....	4
2.2 Project Description.....	4
SECTION THREE – CEQA CHECKLIST.....	14
3.1 Checklist Evaluation Categories.....	14
3.2 Environmental Analysis.....	15

Attachment A – Supplemental Biological Information

Attachment B – Cultural Resources Survey and Supplemental Report (Confidential – under separate cover)

SECTION ONE – INTRODUCTION

This environmental document is an Addendum to the Groveland Community Service District's *Downtown Groveland and Big Oak Flat Sewer Collection System Improvements Project* (Approved Project) Mitigated Negative Declaration (IS/MND), adopted in June 2019 (State Clearinghouse #2019059053), by the Groveland Community Services District (District). After filing the Notice of Determination for the Approved Project, minor changes were made to the Project which included adding some additional improvements (pipelines, manholes, staging areas, and other related components). These additional components of the Project were not included in the original IS/MND and are being evaluated herein. As demonstrated in this Addendum, there are no additional significant impacts and the original IS/MND continues to serve as the appropriate document addressing the environmental impacts of these changes, pursuant to California Environmental Quality Act (CEQA).

1.1 Addendum Purpose

When a proposed project is changed or there are changes in environmental setting, a determination must be made by the Lead Agency as to whether an Addendum or Subsequent EIR or MND is prepared. CEQA Guidelines Sections 15162 and 15164 sets forth criteria to assess which environmental document is appropriate. The criteria for determining whether an Addendum or Subsequent MND is prepared are outlined below. If the criteria below are true, then an Addendum is the appropriate document:

- No new significant impacts will result from the project or from new mitigation measures.
- No substantial increase in the severity of environment impact will occur.
- No new feasible alternatives or mitigation measures that would reduce impacts previously found not to be feasible have, in fact been found to be feasible.

Based upon the information provided in Section Three of this document, inclusion of the pipeline will not result in new significant impacts or substantially increase the severity of impacts previously identified in the IS/MND, and there are no previously infeasible alternatives that are now feasible. None of the other factors set forth in Section 15162(a)(3) are present.

As such, an Addendum is appropriate, and this Addendum has been prepared to address the environmental effects of the Project modifications.

1.2 Environmental Analysis and Conclusions

This Addendum addresses the environmental effects associated only with modifications to the Approved Project that have occurred since adoption of the IS/MND. The conclusions of the analysis in this Addendum remain consistent with those made in the IS/MND. No new significant impacts will result, and no substantial increase in severity of impacts will result from those previously identified in the IS/MND.

1.3 Incorporation by Reference

In compliance with CEQA Guidelines Section 15150, this Addendum has incorporated by reference the *Downtown Groveland and Big Oak Flat Sewer Collection System Improvements Project IS/MND*, adopted by the District in June 2019 (State Clearinghouse #2019059053). Information from this document incorporated by reference into this Addendum have been briefly summarized in the appropriate section(s) which follow, and the relationship between the incorporated part of the referenced document and this Addendum has been described. The original IS/MND is available for review at the Groveland Community Services District, 18966 Ferretti Road, Groveland, CA 95321.

1.4 Addendum Process

As described in Section 1.1, an addendum to an adopted negative declaration may be prepared if only minor technical changes or additions are necessary or none of the conditions described in Section 15162 calling for the preparation of a subsequent EIR or negative declaration have occurred.¹ An addendum need not be circulated for public review but can be included in or attached to the Final EIR or Mitigated Negative Declaration.² The decision-making body shall consider the addendum with the final EIR or adopted negative declaration prior to making a decision on the project.³ Once adopted, the Addendum, along with the original EIR or Negative Declaration, is placed in the Administrative Record, and the CEQA process is complete.

A copy of the Addendum will be transmitted to the State Clearinghouse.

¹ CEQA Guidelines, Section 15164(a)

² CEQA Guidelines, Section 15164(c)

³ CEQA Guidelines Section 15164(d)

SECTION TWO – PROJECT DESCRIPTION

2.1 Location and Setting

The proposed Project will take place in three adjacent communities; Big Oak Flat, Groveland, and Pine Mountain Lake, in western Tuolumne County (see Figure 1). The three communities are within the Groveland Community Services District (CSD or District). Big Oak Flat and Groveland lie along State Route 120 and east of State Route 49. Pine Mountain Lake is located north of State Route 120 and west of Groveland. Yosemite National Park lies approximately 23 miles southeast of the Project sites. Project elevation ranges from approximately 2800 feet to approximately 3100 feet above mean sea level. The proposed Project is located in Township 1S, Range 16E, Sections 20, 21, 23, 27, 29 and 30, MDB&M.

Location of Additional Activities

The additional Project activities described herein will generally occur within the vicinities of the areas evaluated under the original IS/MND. The locations of the additional Project components are shown in Figures 2 through 4.

2.2 Project Description

The following is the Project Description that was included in the original IS/MND:

“The Project involves sewer system improvements in Big Oak Flat, Groveland and Pine Mountain Lake. Specifically, the Project is broken down as follows:

Sewer system improvements in **Big Oak Flat**:

- Replace approximately 455 linear feet of 6-inch sewer pipe using open trench excavation methods.
- Rehabilitate approximately 792 linear feet of 6-inch sewer pipe using trenchless cured-in-place methods.
- Perform spot repairs to resolve pipe anomalies at two locations.
- Construct new manholes.
- Bring existing manhole lids up to grade.
- Install sealed or locking manhole lids.

Sewer system improvements in **Groveland**:

- Replace approximately 408 linear feet of 8-inch sewer pipe and 258 linear feet of 6-inch sewer pipe with open trench excavation methods.
- Rehabilitate approximately 1,413 linear feet using trenchless cured-in-place methods.
- Rehabilitate and install sealed or locking manhole lids.

Sewer system improvements in **Pine Mountain Lake**:

- Replace approximately 2,715 linear feet of 6-inch sewer pipe using open trench excavation methods.
- Perform spot repairs in sections where pipe abnormalities were detected.

Construction methods

Cured-in-place method uses a flexible fiberglass fabric liner coated with a thermosetting polyester resin to form a new pipe inside an existing pipe. The liner is inserted into the existing pipe through existing manholes and cured to form a new liner. The fabric liner holds the resin in place until a tube is inserted in the pipe to be cured.

Polyvinyl chloride (PVC) pipe will be used for sewer pipe replacement work.

Installing new manholes will require: (1) excavating to the depth needed to install the new manhole to new or existing sewer main infrastructure, (2) installing the concrete manhole chamber, (3) connecting new or existing sewer mains, (4) backfill excavations, and (5) restoring the soil surface. Rehabilitating manholes will involve applying a polymer coating to the interior surface of the manhole chamber. Bringing manhole lids to grade will consist of installing a concrete riser column then restoring the soil surface to match the existing grade. Installing sealed or locking manhole lids will involve altering existing concrete collars to accommodate the new locking lids.”

Updates to the Original IS/MND Project Description

Minor changes were made to the Project which included adding some additional improvements (pipelines, manholes, staging areas, and other related components). These components are depicted in the engineering drawings in Figures 5 through 7 (the new components are shown in red). These additional components, when combined with the Original Project, will result in the installation of

approximately 0.6 miles of pipelines using cured-in-place methods and approximately 1.6 miles of open trench replacement pipelines. A total of 65 manholes will be installed, replaced, sealed or rehabilitated.

Figure 1 – Project Vicinity Map

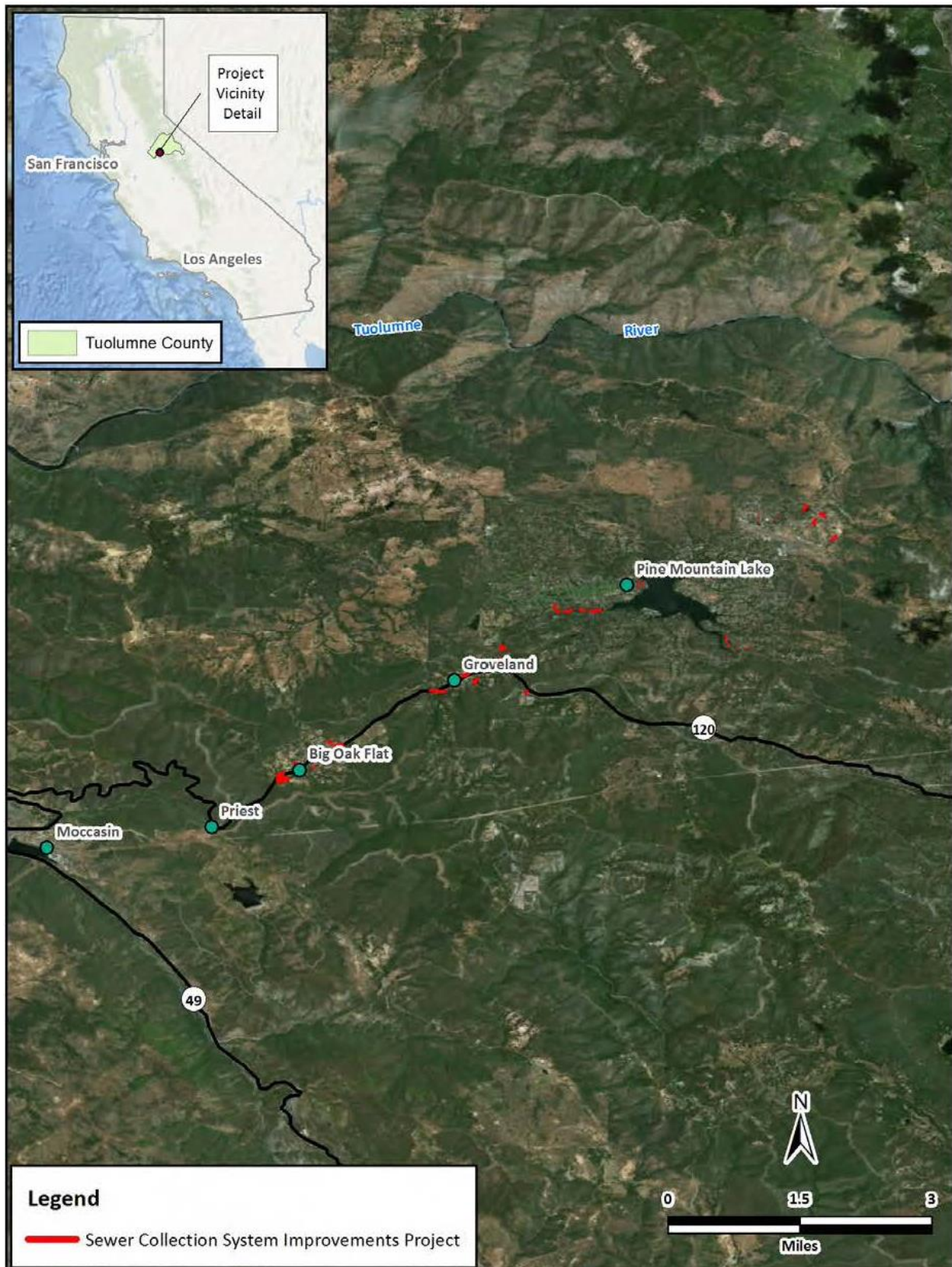


Figure 2 – Big Oak Flat Location of New Project Components

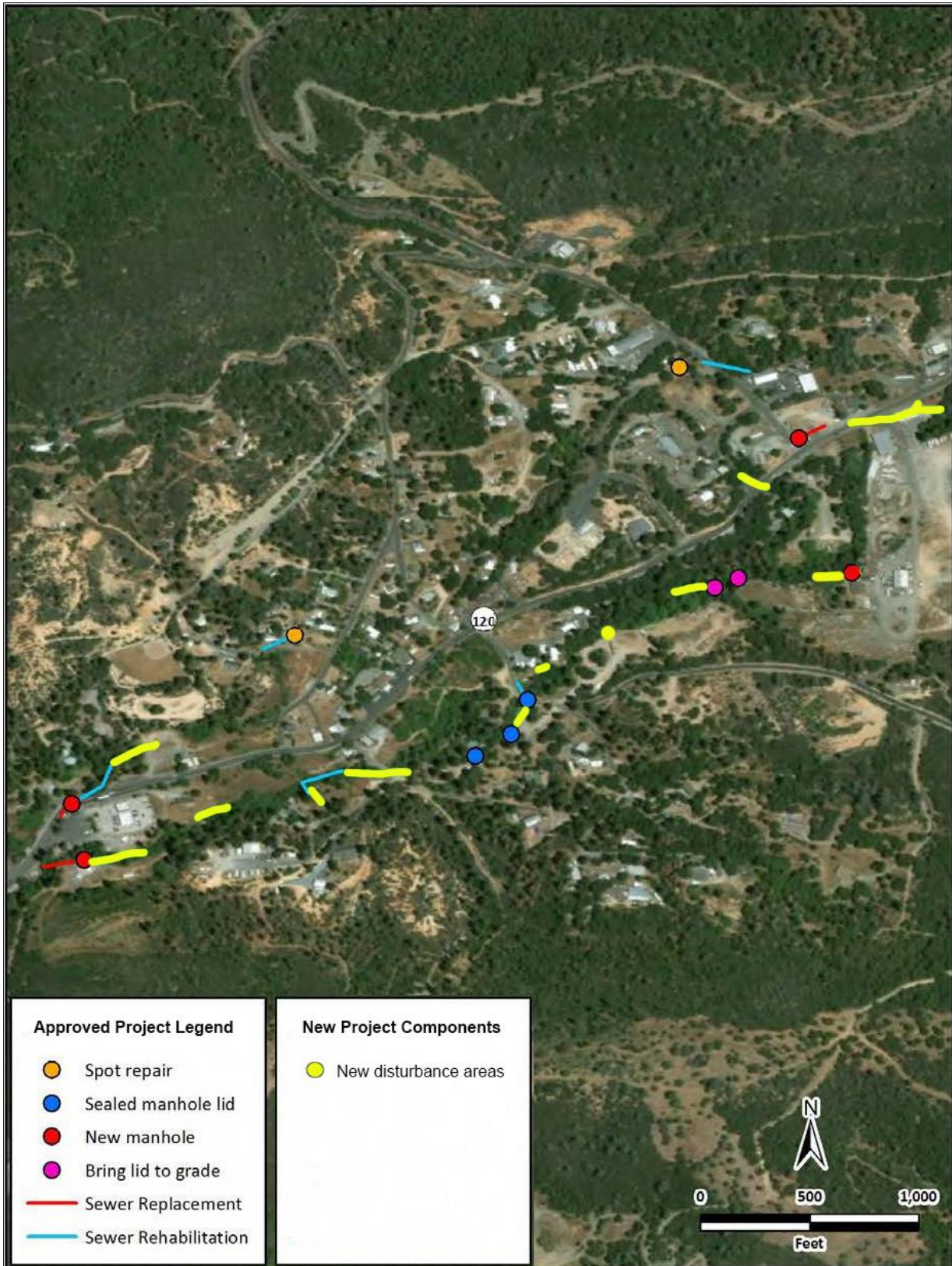


Figure 3 – Groveland Location of New Project Components

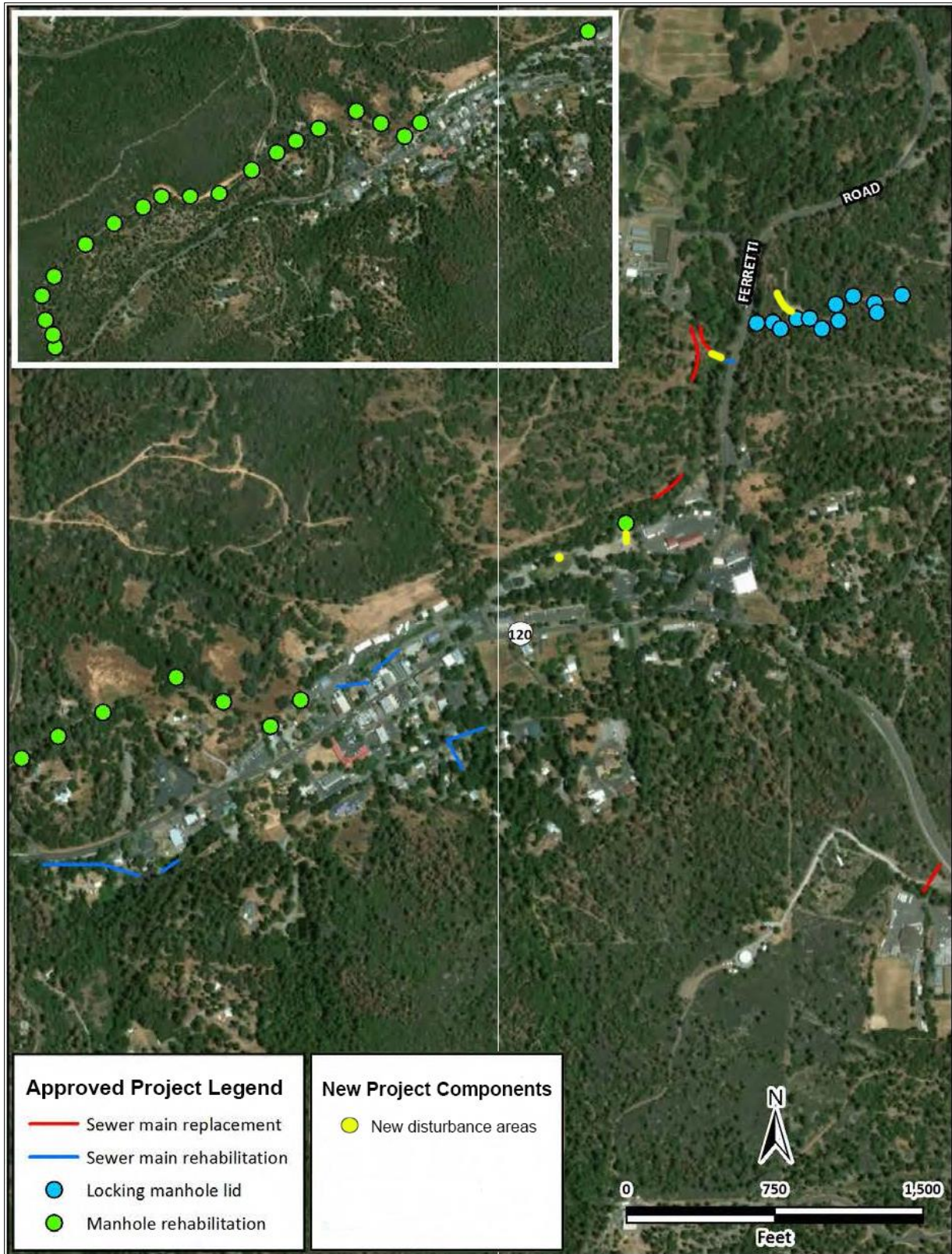


Figure 4 – Pine Mountain Lake Location of New Project Components

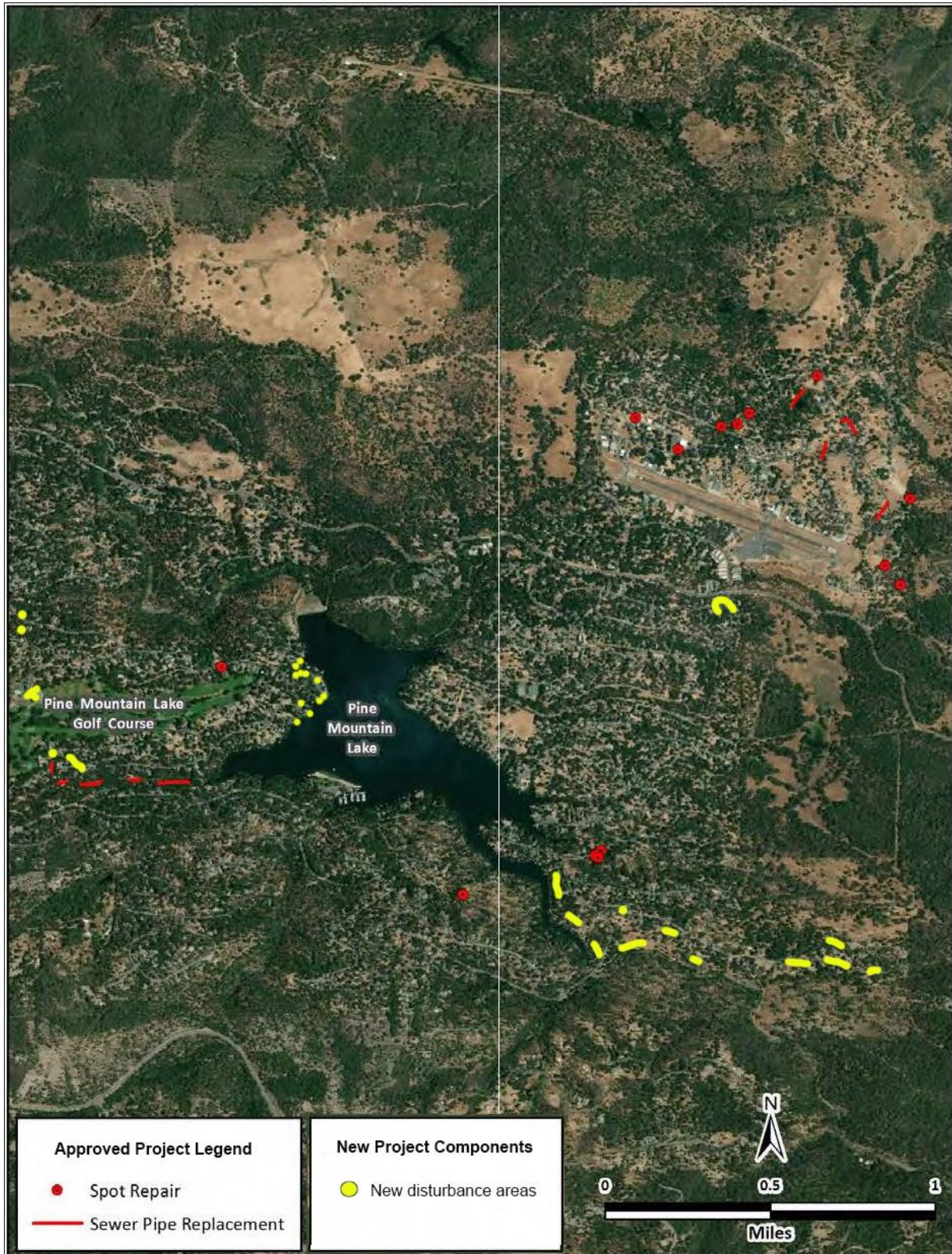


Figure 5 – Big Oak Flat New Project Components

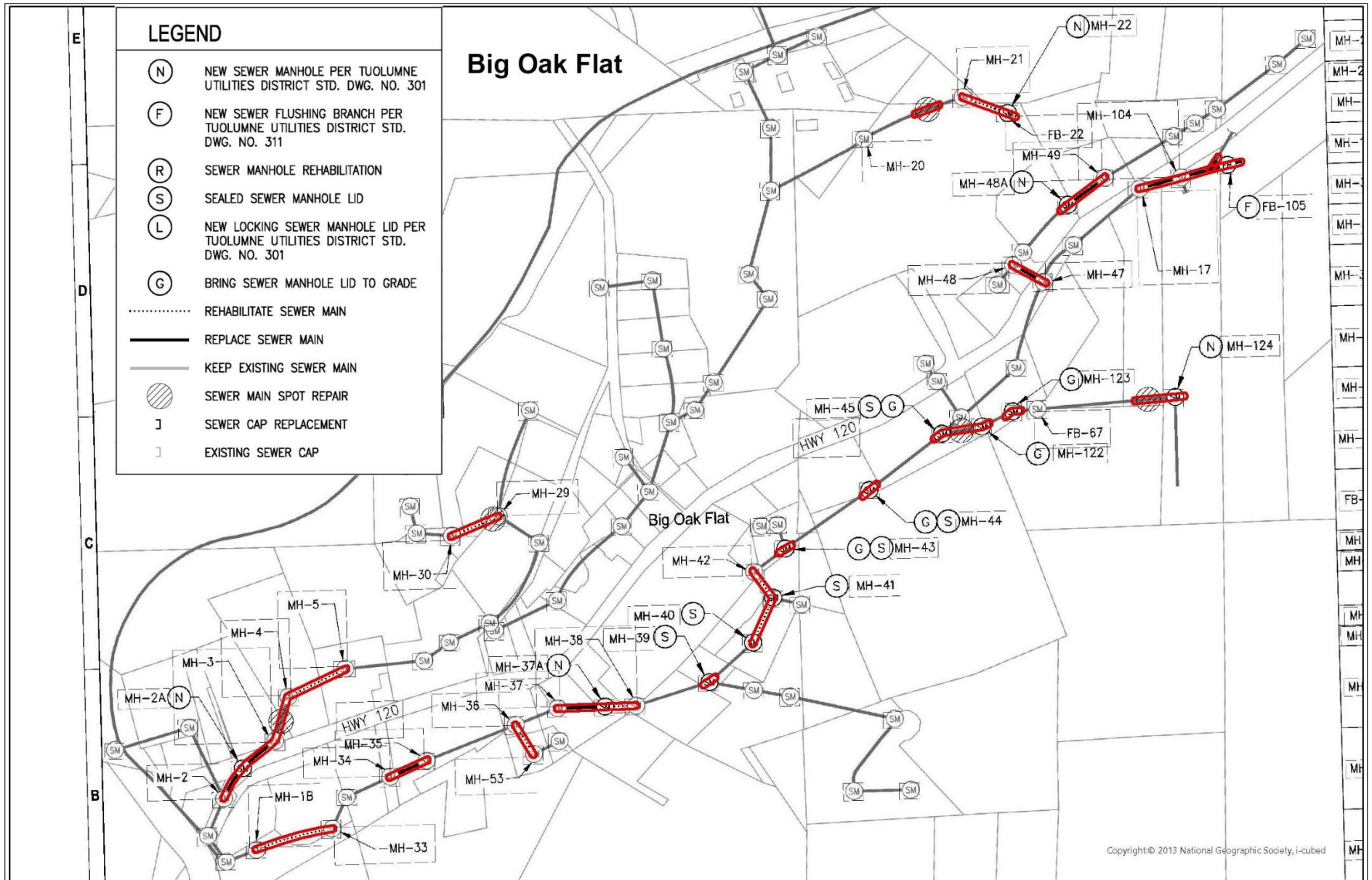


Figure 6 – Groveland New Project Components

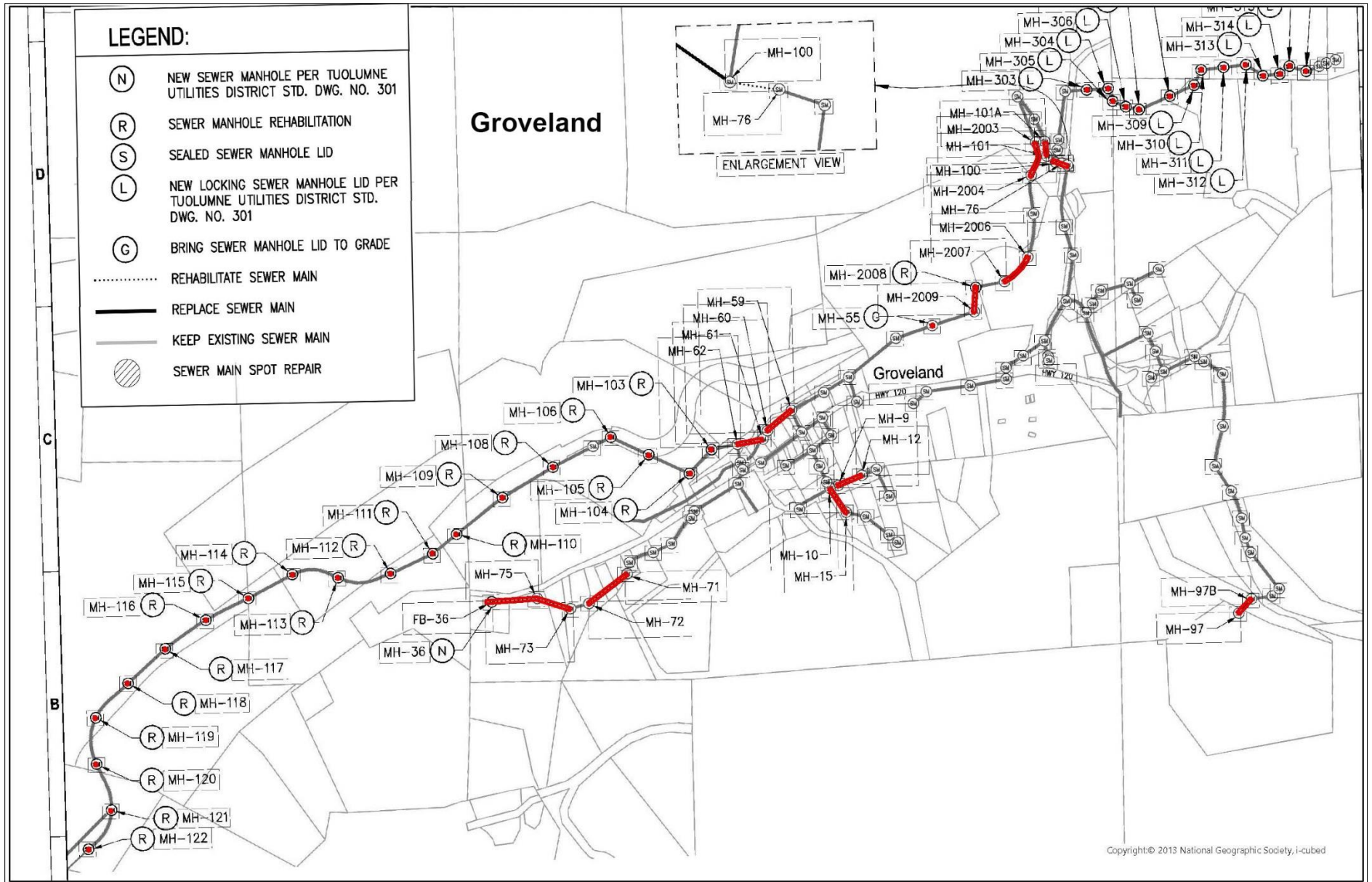
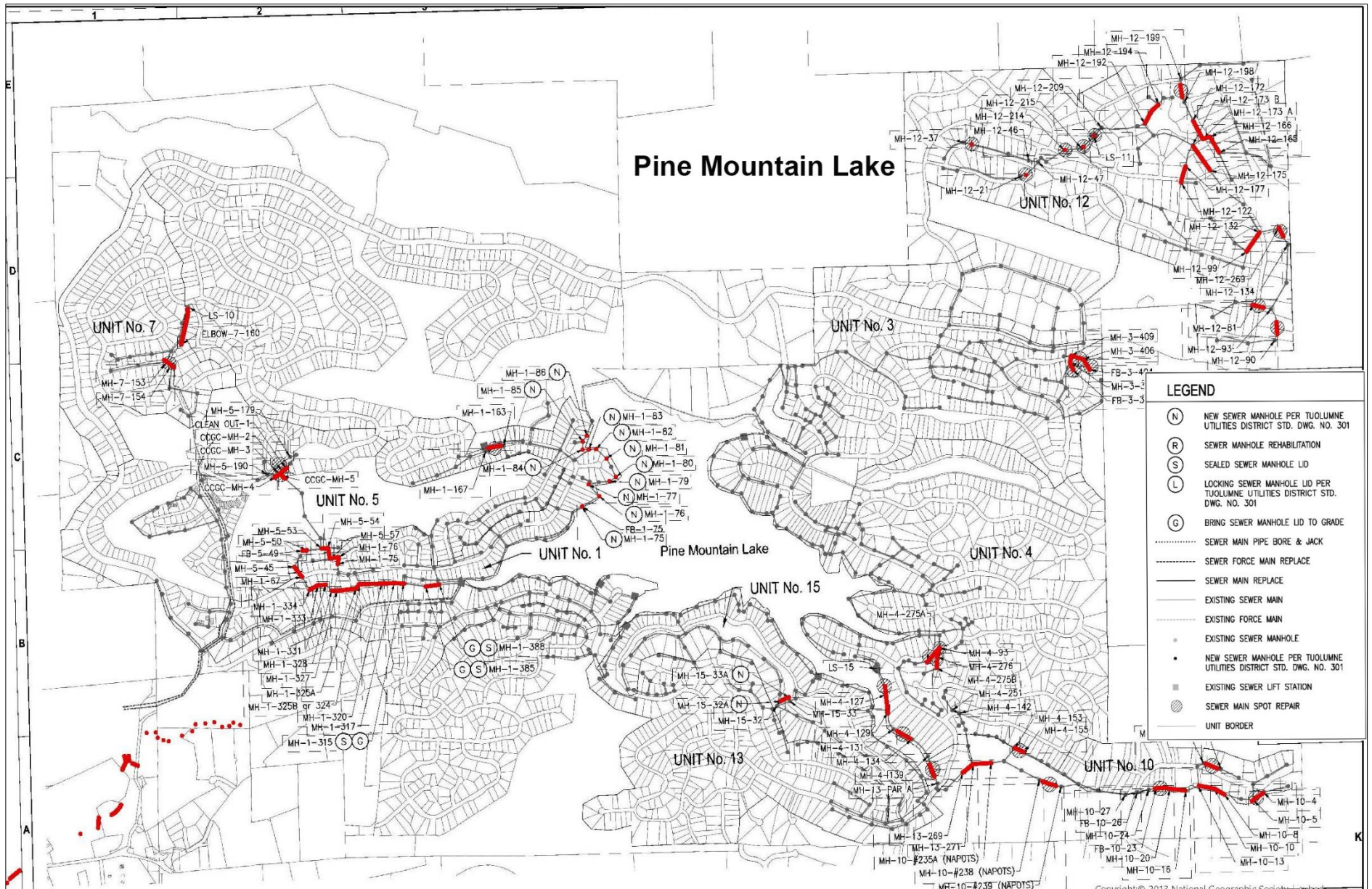


Figure 7 – Pine Mountain Lake New Project Components



SECTION THREE – CEQA CHECKLIST

The purpose of the checklist is to evaluate the categories in terms of any changed condition (e.g., changed circumstances, project changes, or new information of substantial importance) that may result in a changed environment result (e.g., a new significant impact or substantial increase in the severity of a previously identified significant effect)⁴.

The questions posed in the checklist come from Appendix G of the CEQA Guidelines. A “no” answer does not necessarily mean that there are no potential impacts relative to the environmental category, but that there is no change in the condition or status of the impact since it was analyzed and addressed with mitigation measures in the IS/MND prepared for the project. These environmental categories might be answered with a “no” in the checklist, since the proposed project does not introduce changes that would result in modification to the conclusion of the adopted IS/MND.

3.1 Checklist Evaluation Categories

Conclusion in Prior IS/MND – This column provides a cross reference to the section of the IS/MND where the conclusion may be found relative to the environmental issue listed under each topic.

Do Proposed Changes Involve New Impacts? – Pursuant to CEQA Guidelines Section 15162(a)(1), this column indicates whether the changes represented by the revised project will result in new significant environmental impacts not previously identified or mitigated by the IS/MND, or whether the changes will result in a substantial increase in the severity of a previously identified significant impact.

New Circumstances Involving New Impacts? – Pursuant to CEQA Guidelines Section 15162(a)(2), this column indicates where there have been substantial changes with respect to the circumstances under which the project is undertaken that will require major revisions to the IS/MND, due to the involvement of new significant environmental effects or a substantial increase in the severity of previously identified significant effects.

New Information Requiring Analysis or Verification? – Pursuant to CEQA Guidelines Section 15162(a)(3)(a-d), this column indicates whether new information of substantial importance, which was

⁴ CEQA Guidelines Section 15162

not known and could not have been known with the exercise of reasonable diligence at the time the previous MND was certified as complete.

Adopted IS/MND Mitigation Measures – Pursuant to CEQA Guidelines Section 15162(a)(3), this column indicates whether the IS/MND provides mitigation measures to address effects in the related impact category.

3.2 Environmental Analysis

As explained in Section One, this comparative analysis has been undertaken pursuant to the provisions of CEQA Sections 15162 and 15164 to provide the District with the factual basis for determining whether any changes in the project, any changes in circumstances, or any new information since the IS/MND was adopted require additional environmental review or preparation of a Subsequent MND or EIR to the IS/MND previously prepared.

As described in Section Two, there are additional components being added to the Project (pipelines, manholes, staging areas, and other related components). Because of this, new analysis for impacts within the Project area is provided in this Section of the Addendum and are listed as follows:

I. AESTHETICS

Environmental Issue Area	Adopted IS/MND Conclusion	Do Proposed Changes Involve New Impacts?	New Circumstances Involving New Impacts?	New Information Requiring Analysis or Verification?	Adopted IS/MND Mitigation Measures
<i>Would the project:</i>					
a. Have a substantial adverse effect on a scenic vista?	No Impact.	No. The Project will not significantly impact a scenic vista.	No. The Project will not significantly impact a scenic vista.	No. The Project will not significantly impact a scenic vista.	None.
b. Substantially damage scenic resources, including, but not limited to, trees, rock outcroppings, and historic buildings within a state scenic highway?	No Impact.	No. The Project will not significantly impact scenic resources in the Project area.	No. The Project will not significantly impact scenic resources in the Project area.	No. The Project will not significantly impact scenic resources in the Project area.	None.
c. Substantially degrade the existing visual character or quality of the site and its surroundings?	Less Than Significant Impact.	No. The project would not substantially degrade site existing visual character.	No. The project would not substantially degrade site existing visual character.	No. The project would not substantially degrade site existing visual character.	None.
d. Create a new source of substantial light or glare which would adversely affect day or nighttime views in the area?	Less Than Significant Impact.	No. The project would not create a source of substantial light or glare.	No. The project would not create a source of substantial light or glare.	No. The project would not create a source of substantial light or glare.	None.

DISCUSSION

The previously adopted Mitigated Negative Declaration determined that the proposed Project would have no impacts or a less than significant impact on aesthetics. The proposed additional improvements described in Section 2.2 – Project Description will occur within the vicinity of the Approved Project as described in the original IS/MND. The additional components are similar to the Approved Project

components (pipelines, manholes, staging areas, and other related components). The majority of the work (proposed pipelines) will be installed underground using the cured-in-place method of construction to minimize ground disturbance. The pipelines will not be visible once installed and thus would not degrade the existing visual character of the area. Any replacement of at-grade structures such as manholes will be similar to existing facilities and will not introduce new features that are not already common to the built environment along the existing sewer collection system. Construction activities will be seen by the residences and businesses within the immediate vicinity and by vehicles driving in the District; however, construction activities will be temporary. As such, the proposed additional improvements will not result in impacts beyond what was analyzed in the previous IS/MND. Therefore, the Project will continue to have less than significant impacts on aesthetics.

FINAL IS/MND MITIGATION MEASURES

None.

CONCLUSION

The conclusions from the IS/MND remain unchanged.

II. AGRICULTURAL RESOURCES

Environmental Issue Area	Adopted IS/MND Conclusion	Do Proposed Changes Involve New Impacts?	New Circumstances Involving New Impacts?	New Information Requiring Analysis or Verification?	Adopted IS/MND Mitigation Measures
<i>Would the project:</i>					
a. Convert Prime Farmland, Unique Farmland, or Farmland of Statewide Importance (Farmland), as shown on the maps prepared pursuant to the Farmland Mapping and Monitoring Program of the California Resources Agency to non-agricultural use?	No Impact.	No. The project will not remove any land from agricultural production.	No. The project will continue to not remove any land from agricultural production.	No. The proposed project remains the same concerning agricultural resources.	None.
b. Conflict with existing zoning for agricultural use, or a Williamson Act contract?	No Impact.	No. The project will not remove any land from agricultural production.	No. The project will not remove any land from agricultural production.	No. The proposed project remains the same concerning agricultural resources.	None.
c. Conflict with existing zoning for, or cause rezoning of, forest land (as defined in Public Resources Code section 12220(g)), timberland (as defined by Public Resources Code section 4526), or timberland zoned Timberland Production (as defined by Government Code section 51104(g))?	No Impact.	No. The project will not remove any land from agricultural production.	No. The project will not remove any land from agricultural production.	No. The proposed project remains the same concerning agricultural resources.	None.
d. Result in the loss of forest land or conversion of forest land to non-forest use?	No Impact.	No. There is no forest land on site.	No. There is no forest land on site.	No. The proposed project remains the same concerning	None.

Environmental Issue Area	Adopted IS/MND Conclusion	Do Proposed Changes Involve New Impacts?	New Circumstances Involving New Impacts?	New Information Requiring Analysis or Verification?	Adopted IS/MND Mitigation Measures
				agricultural resources.	
e. Involve other changes in the existing environment which, due to their location or nature, could result in conversion of Farmland, to non-agricultural use or conversion of forest land to non-forest use?	No Impact.	No. The project will not remove any land from agricultural production	No. The project will not remove any land from agricultural production	No. The proposed project remains the same concerning agricultural resources.	None.

DISCUSSION

The previously adopted Mitigated Negative Declaration determined that the proposed Project would have no impact to agricultural or forest resources. The Farmland Mapping and Monitoring Program has not mapped farmland in Tuolumne County and as such, the Project does not include conversion of designated farmland to non-farmland. The proposed Project will not remove any land from agricultural production, as the land is not designated or used for agricultural purposes. As such, the proposed additional improvements will not result in impacts beyond what was analyzed in the previous IS/MND. Therefore, the Project will continue to have no impacts on agricultural or forestry resources.

FINAL IS/MND MITIGATION MEASURES

None.

CONCLUSION

The conclusions from the IS/MND remain unchanged.

III. AIR QUALITY

Environmental Issue Area	Adopted IS/MND Conclusion	Do Proposed Changes Involve New Impacts?	New Circumstances Involving New Impacts?	New Information Requiring Analysis or Verification?	Adopted IS/MND Mitigation Measures
<i>Would the project:</i>					
a. Conflict with or obstruct implementation of the applicable air quality plan?	Less Than Significant Impact.	No. The project would not create new significant increases in air emissions that would conflict or obstruct implementation of an available air quality plan.	No. The project would not create new significant increases in air emissions that would conflict or obstruct implementation of an available air quality plan.	No. The project would not create new significant increases in air emissions that would conflict or obstruct implementation of an available air quality plan.	None.
b. Violate any air quality standard or contribute substantially to an existing or projected air quality violation?	Less Than Significant Impact	No. The project would not introduce any new impacts related to air quality standards or violations not previously disclosed.	No. The project would not introduce any new impacts related to air quality standards or violations not previously disclosed.	No. The project would not introduce any new impacts related to air quality standards or violations not previously disclosed.	None.
c. Result in a cumulatively considerable net increase of any criteria pollutant for which the project region is non-attainment under an applicable federal or state ambient air quality standard (including releasing emissions which exceed quantitative thresholds for ozone precursors)?	Less Than Significant Impact.	No. The project would not result in a cumulatively considerable net increase of any criteria pollutant for which the project region is nonattainment under an applicable federal or state ambient air quality standard.	No. The project would not result in a cumulatively considerable net increase of any criteria pollutant for which the project region is nonattainment under an applicable federal or state ambient air quality standard.	No. The project would not result in a cumulatively considerable net increase of any criteria pollutant for which the project region is nonattainment under an applicable federal or state ambient air quality standard.	None.

Environmental Issue Area	Adopted IS/MND Conclusion	Do Proposed Changes Involve New Impacts?	New Circumstances Involving New Impacts?	New Information Requiring Analysis or Verification?	Adopted IS/MND Mitigation Measures
d. Expose sensitive receptors to substantial pollutant concentrations?	Less Than Significant Impact.	No. The project would not expose sensitive receptors to substantial pollutant concentrations.	No. The project would not expose sensitive receptors to substantial pollutant concentrations.	No. The project would not expose sensitive receptors to substantial pollutant concentrations.	None.
e. Create objectionable odors affecting a substantial number of people?	Less Than Significant Impact	No. The project does not involve any land uses that would create additional objectionable odors.	No. The project does not involve any land uses that would create additional objectionable odors.	No. The project does not involve any land uses that would create additional objectionable odors.	None.

DISCUSSION

The previously adopted Mitigated Negative Declaration determined that the proposed Project would have a less than significant impact on air quality. The proposed additional Project components will not increase the severity of air quality impacts or result in a significant increase in emissions and will not result in air emissions that exceed any Air District thresholds. Following construction activities, operation of the sewer mains would be a passive process and no increase in long-term operations air emissions is anticipated to occur. Construction emissions are provided in the table below. The Sacramento Metropolitan Air Quality Management District’s Road Construction Emissions Model, Version 8.1.0 was utilized to estimate emissions generated from project construction (the Sacramento model is a State-wide industry standard model for linear projects such as pipelines). As identified in the table, construction emissions are well below the established air emission thresholds.

Proposed Project Construction Emissions

Pollutant/ Precursor	Construction Emissions (tpy)	Threshold/ Exceed?
CO	4.70	100/ N
NOx	6.36	100/ N
ROG	0.59	100/ N
PM₁₀	1.42	100/ N

The Air District rules and regulations identified in the IS/MND pertaining the original project description also apply to the additional improvements being proposed. As such, the proposed additional improvements will not result in impacts beyond what was analyzed in the previous IS/MND. Therefore, the Project will continue to have less than significant impacts on air quality.

FINAL IS/MND MITIGATION MEASURES

None.

CONCLUSION

The conclusions from the IS/MND remain unchanged.

IV. BIOLOGICAL RESOURCES

Environmental Issue Area	Adopted IS/MND Conclusion	Do Proposed Changes Involve New Impacts?	New Circumstances Involving New Impacts?	New Information Requiring Analysis or Verification?	Adopted IS/MND Mitigation Measures
<i>Would the project:</i>					
a. Have a substantial adverse effect, either directly or through habitat modifications, on any species identified as a candidate, sensitive, or special status species in local or regional plans, policies, or regulations, or by the California Department of Fish and Game or U.S. Fish and Wildlife Service?	Less Than Significant Impact With Mitigation.	No. The additional Project components will have similar impacts to the original project and after mitigation, will not have a substantial effect on any candidate plant or animal species.	No. The additional Project components will have similar impacts to the original project and after mitigation, will not have a substantial effect on any candidate plant or animal species.	No. The additional Project components will have similar impacts to the original project and after mitigation, will not have a substantial effect on any candidate plant or animal species.	BIO – 1 BIO – 2 BIO – 3 BIO – 4
b. Have a substantial adverse effect on any riparian habitat or other sensitive natural community identified in local or regional plans, policies, regulations, or by the California Department of Fish and Game or U.S. Fish and Wildlife Service?	Less Than Significant Impact With Mitigation.	No. The site does not contain any biologically unique or riparian habitat. The additional Project components will have similar impacts to the original project and after mitigation, will not have a substantial effect on a riparian habitat or sensitive natural community.	No. The site does not contain any biologically unique or riparian habitat. The additional Project components will have similar impacts to the original project and after mitigation, will not have a substantial effect on a riparian habitat or sensitive natural community.	No. The site does not contain any biologically unique or riparian habitat. The additional Project components will have similar impacts to the original project and after mitigation, will not have a substantial effect on a riparian habitat or sensitive natural community.	BIO – 1 BIO – 2 BIO – 3 BIO – 4

Environmental Issue Area	Adopted IS/MND Conclusion	Do Proposed Changes Involve New Impacts?	New Circumstances Involving New Impacts?	New Information Requiring Analysis or Verification?	Adopted IS/MND Mitigation Measures
c. Have a substantial adverse effect on federally protected wetlands as defined by Section 404 of the Clean Water Act (including, but not limited to, marsh, vernal pool, coastal, etc.) through direct removal, filling, hydrological interruption, or other means?	No Impact.	No. No wetlands are present within the original project site or within the areas of the additional new project components.	No. No wetlands are present within the original project site or within the areas of the additional new project components.	No. No wetlands are present within the original project site or within the areas of the additional new project components.	None.
d. Interfere substantially with the movement of any native resident or migratory fish or wildlife species or with established native resident or migratory wildlife corridors, or impede the use of native wildlife nursery sites?	Less Than Significant Impact With Mitigation.	No. The project will not interfere with any fish or wildlife movement or corridors. The additional Project components will have similar impacts to the original project and after mitigation, will not interfere substantially with wildlife movement.	No. The project will not interfere with any fish or wildlife movement or corridors. The additional Project components will have similar impacts to the original project and after mitigation, will not interfere substantially with wildlife movement.	No. The project will not interfere with any fish or wildlife movement or corridors. The additional Project components will have similar impacts to the original project and after mitigation, will not interfere substantially with wildlife movement.	BIO – 5
e. Conflict with any local policies or ordinances protecting biological resources, such as a tree preservation policy or ordinance?	No Impact.	No. No local ordinances are applicable to the Project. This includes the original project area and the new project areas.	No. No local ordinances are applicable to the Project. This includes the original project area and the new project areas. No	No. No local ordinances are applicable to the Project. This includes the original project area and the new project areas. No	None.

Environmental Issue Area	Adopted IS/MND Conclusion	Do Proposed Changes Involve New Impacts?	New Circumstances Involving New Impacts?	New Information Requiring Analysis or Verification?	Adopted IS/MND Mitigation Measures
		No additional impacts.	additional impacts.	additional impacts.	
f. Conflict with the provisions of an adopted Habitat Conservation Plan, Natural Community Conservation Plan, or other approved local, regional, or state habitat conservation plan?	No Impact.	No. There are no adopted any biological conservation plans applicable to the Project.	No. There are no adopted any biological conservation plans applicable to the Project.	No. There are no adopted any biological conservation plans applicable to the Project.	None.

DISCUSSION

The previously adopted Mitigated Negative Declaration determined that the proposed Project would have no impact associated with impact areas IV (c), (e) and (f), and a less than significant impact with mitigation associated with impact areas IV (a), (b) and (d). The proposed additional improvements described in Section 2.2 – Project Description will occur within the vicinity of the Approved Project as described in the original IS/MND. The additional components are similar to the Approved Project components (pipelines, manholes, staging areas, and other related components). Because of the additional Project components, a supplemental Biological Memorandum was prepared (Attachment A to this Addendum).

Previously, a Biological Resources Evaluation (BRE) was conducted by Colibri Ecological Consulting for the original Approved Project (Appendix B of the Original IS/MND). The Biological Evaluation included database searches through the California Natural Diversity Database (CNDDDB), followed by a reconnaissance survey of the original Project areas. The Approved Project BRE is summarized as follows:

Critical Habitat

The BRE concluded the Project will have no effect on critical habitat as no critical habitat has been designated or proposed in the survey area.

Special-Status Species

Bald eagle, northwestern pond turtle, and western red bat were identified in the desktop review as having potential to occur on or near the Project site due to the presence of habitat in the survey area:

- Bald eagle requires large trees near water bodies for nesting. Suitable trees were present near Pine Mountain Lake. Therefore, the BRE concluded the Project may affect but is not likely to adversely affect bald eagle.
- Northwestern pond turtle uses aquatic habitats such as creeks, streams, or irrigation ditches for movements and foraging and adjacent upland areas for egg laying. The Project site is adjacent to and crosses multiple drainages that could support this species. Therefore, the BRE concluded the Project may affect but is not likely to adversely affect northwestern pond turtle.
- Western red bat uses trees, tree cavities, and peeling bark for roosting. Because several riparian trees that qualify as habitat will likely be removed to facilitate sewer pipe installation activities, the BRE concluded the Project may affect but is not likely to adversely affect this species.

Additionally, the BRE concluded that the Project will have no effect on other special-status species due either to the lack of habitat for such species in the survey area or for some plants because they were found to be absent during appropriate seasonal surveys.

Migratory Birds

The BRE concluded the Project may affect but is not likely to adversely affect nesting migratory birds.

Regulated Habitats

The BRE concluded the Project may affect and is likely to adversely affect three regulated habitats. These habitats consist of intermittent and ephemeral streams under the regulatory jurisdiction of the USACE, the RWQCB, and the CDFW. As such, Clean Water Act Section 404 permits and 401 certifications as well as California Fish and Game Code Section 1602 notifications are being prepared for impacts at these work locations. However, the Project will have no effect on federally protected wetlands or other regulated habitats under CEQA-Plus purview as no such habitats were found in the survey area.

The Project could have a substantial, direct adverse effect on bald eagle. Bald eagle requires large trees within about one mile of large, open water bodies for nesting. The Project site is within one mile of Pine Mountain Lake, the nearest water body that could support nesting by this species. Although the two trees, both Pacific willow (*Salix lasiandra*), that may need to be removed to facilitate Project construction

are too small to support nesting, construction-related disturbance could result in the incidental loss of reproduction. Therefore, Mitigation Measure BIO-1 (below) was included in the conditions of approval to reduce the potential impact to a less-than significant level.

The Project could also have a substantial, direct adverse effect on northwestern pond turtle, a native reptile designated by the CDFW as a Species of Special Concern. Northwestern pond turtle uses a variety of aquatic habitats including streams, creeks, ponds, lakes, and canals for shelter, foraging, and basking and lays its eggs in upland areas adjacent to these aquatic habitats. Because the Project will involve excavation and staging in and adjacent to multiple sections of intermittent and ephemeral streams that could support this species at some time during the year, incidental loss of animals or eggs could occur. Therefore, Mitigation Measure BIO-2 (below) was included in the conditions of approval to reduce the potential impact to a less-than-significant level.

The Project could also have a substantial, direct adverse effect on western red bat, a native bat species designated by the CDFW as a Species of Special Concern. Western red bat uses trees for roosting and pupping habitat. This species often uses trees on the edges of streams, open fields, and urban areas, approximately 2-40 feet above ground level (Zeiner et al. 1988-1990). Because the Project may require that riparian trees be removed at two work locations, incidental loss of animals or young from these trees could occur. Therefore, Mitigation Measure BIO-3 (below) was included in the conditions of approval to reduce the potential impact to a less-than-significant level.

The Approved Project will impact two intermittent streams, Rattlesnake Creek in Big Oak Flat and an unnamed stream in Pine Mountain Lake. Note: the updated components of the Project (associated with this Addendum) will not impact any streams. Both streams associated with the Approved Project support white alder (*Alnus rhombifolia*) and Pacific willow, two species of native riparian tree. In both cases, work activities will involve excavating an open trench across the stream to replace the existing sewer pipeline. This work could impact four white alders in Big Oak Flat (two 4-inch diameter at breast height [DBH], one 3-inch DBH, and one 2-inch DBH) and two Pacific willows in Pine Mountain Lake (two 8-inch DBH). Work activities will also impact Himalayan blackberry (*Rubus armeniacus*), a nonnative vine, along Rattlesnake Creek in Big Oak Flat. Based on the abundance of this plant species in the local area and at this location, including on and adjacent to the impact area, recolonization after Project completion is expected to occur naturally and probably within one growing season. Therefore, the BRE concluded that Project related impacts to Himalayan blackberry will be negligible, don't meet the threshold of significance, and consequently require no mitigation. However, to mitigate potential impacts to white alder and Pacific willow at these two drainages, Mitigation Measure BIO-4 (below) was included in the conditions of approval to reduce the potential impact to a less-than-significant level.

The Project has the potential to impede the use of nursery sites for native birds protected under the Migratory Bird Treaty Act and California Fish and Game Code. Migratory birds are expected to nest on and near the Project site. Construction disturbance during the breeding season could result in the incidental loss of fertile eggs or nestlings or otherwise lead to nest abandonment. Disturbance that causes nest abandonment or loss of reproductive effort is considered take by the CDFW. Loss of fertile eggs or nesting birds, or any activities resulting in nest abandonment, could constitute a significant impact if the species is particularly rare in the region. Construction activities such as excavation, trenching, water main or water valve installation, and mobilizing or demobilizing construction equipment that disturb a nesting bird on the site or immediately adjacent to the construction zone could constitute a significant impact. The BRE recommends that Mitigation Measure BIO-5 (below) be included in the conditions of approval to reduce the potential impact to a less-than-significant level.

Original IS/MND Mitigation Measures:

BIO-1: Protect nesting bald eagle.

1. To the extent practicable, construction shall be scheduled to avoid the nesting season, which extends from February through July.
2. If it is not possible to schedule construction between August and January, preconstruction surveys for nesting bald eagles shall be conducted by a qualified biologist to ensure that no active nests will be disturbed during Project implementation. A pre-construction survey shall be conducted no more than 14 days prior to the initiation of construction activities. During this survey, the qualified biologist shall inspect all potential nest substrates (large trees) within 0.5-miles of the impact areas in Pine Mountain Lake for nests. If an active nest is found close enough to the construction area to be disturbed by Project activities, the qualified biologist in consultation with the CDFW shall determine the extent of a construction-free buffer to be established around the nest. If work cannot proceed without disturbing the nesting eagles, work may need to be halted or redirected to other areas until nesting and fledging are completed or the nest has otherwise failed for non-construction related reasons.

BIO-2: Protect northwestern pond turtle.

1. To the extent practicable, construction in and adjacent to intermittent and ephemeral streams shall be scheduled to occur when these streams are dry (approximately mid-July through October) to avoid the possibility of northwestern pond turtle being present at the worksite.

2. If it is not possible to schedule construction between August and October, preconstruction surveys for northwestern pond turtle shall be conducted by a qualified biologist to determine if turtles are occupying streamside worksites. A pre-construction survey shall be conducted no more than 14 days prior to the initiation of construction activities. During this survey, the qualified biologist shall inspect all sections of stream within 300 feet of planned work activities, including adjacent upland areas, for turtles and nests; northwestern pond turtle nests in upland areas within several hundred feet of water in the spring, typically during the months of April and May. If a turtle or nest is found within 300 feet of the worksite, a qualified biological monitor shall remain on site during construction to ensure that no turtles or turtle nests are impacted by work activities. Any turtle found on or adjacent to the worksite shall be allowed to leave on its own.

BIO-3: Protect western red bat.

1. To the extent practicable, construction shall be scheduled to avoid the birthing and pupping season for western red bat, which extends from May through August.
2. If it is not possible to schedule construction between September and April, preconstruction surveys for roosting bats shall be conducted by a qualified biologist to ensure that no active maternal colonies will be disturbed during Project implementation. A pre-construction survey shall be conducted no more than 14 days prior to the initiation of construction activities. During this survey, the qualified biologist shall inspect all potential colony substrates in and immediately adjacent to the impact areas for maternity roosts. If an active maternity roost is found close enough to the construction area to be disturbed by work activities, the qualified biologist shall determine the extent of a construction-free buffer to be established around the colony. If work cannot proceed without disturbing the colony, work may need to be halted or redirected to other areas until young are able to fly or the colony has otherwise failed for non-construction related reasons.

BIO-4: Mitigate impacts to riparian vegetation.

1. To the extent practical, avoid impacting white alder and Pacific willow trees.
2. If impacts to white alder and Pacific willow trees are unavoidable, the District shall implement the tree replacement and maintenance requirements detailed in the Streamed Alteration Agreement issued by the CDFW for the Project. Those requirements are likely to involve replacing trees with a DBH of 4 inches or greater that are damaged or removed by replanting native species at a 3:1 ratio (replaced to lost) and ensuring a performance criterion of 70 percent survival of tree plantings for a minimum period of five consecutive years,

including up to three years with supplemental irrigation and a minimum of two years without such assistance.

BIO-5: Protect nesting birds.

1. To the extent practicable, construction shall be scheduled to avoid the nesting season, which extends from February through August.
2. If it is not possible to schedule construction between September and January, preconstruction surveys for nesting birds shall be conducted by a qualified biologist to ensure that no active nests will be disturbed during Project implementation. A pre-construction survey shall be conducted no more than 14 days prior to the initiation of construction activities. During this survey, the qualified biologist shall inspect all potential nest substrates in and immediately adjacent to the impact areas for nests. If an active nest is found close enough to the construction area to be disturbed by these activities, the qualified biologist shall determine the extent of a construction-free buffer to be established around the nest. If work cannot proceed without disturbing the nesting birds, work may need to be halted or redirected to other areas until nesting and fledging are completed or the nest has otherwise failed for non-construction related reasons.

Additional Project Components

Minor changes were made to the Project which included adding some additional improvements (pipelines, manholes, staging areas, and other related components). The new Project components will have ground disturbing activities similar to the Approved Project and will occur in the general vicinity of the areas covered under the Approved Project. It should be noted that none of the new Project components involve work within creeks, streambeds, lakes or other waterways and will not impact the existing regulatory permits required for the Project. The new work areas are depicted on Figures 2 through 4. The Approved Project components are shown on each figure and the new project components are depicted in yellow. These components are also depicted in the engineering drawings in Figures 5 through 7 (the new components are shown in red).

The new work areas depicted in Figures 2 through 4 will occur in areas similar to the Approved Project. As such, the mitigation measures applicable to the Approved Project are also applicable to the new project areas. For the new project areas, these don't include work within creeks, streambeds, lakes or other waterways, thus Mitigation Measures BIO – 2 and BIO – 4 are only applicable to the Approved

Project. However, Mitigation Measures BIO – 1, BIO – 3 and BIO – 5 will be applicable to both the Approved Project and all of the new Project areas. Implementation of the mitigation measures will reduce potential Project impacts to a less than significant level and will ensure that the Project is in compliance with state and federal laws protecting these species. Therefore, after mitigation, the Project will continue to have less than significant impacts on biological resources.

FINAL IS/MND MITIGATION MEASURES

BIO-1: Protect nesting bald eagle.

1. To the extent practicable, construction shall be scheduled to avoid the nesting season, which extends from February through July.
2. If it is not possible to schedule construction between August and January, preconstruction surveys for nesting bald eagles shall be conducted by a qualified biologist to ensure that no active nests will be disturbed during Project implementation. A pre-construction survey shall be conducted no more than 14 days prior to the initiation of construction activities. During this survey, the qualified biologist shall inspect all potential nest substrates (large trees) within 0.5-miles of the impact areas in Pine Mountain Lake for nests. If an active nest is found close enough to the construction area to be disturbed by Project activities, the qualified biologist in consultation with the CDFW shall determine the extent of a construction-free buffer to be established around the nest. If work cannot proceed without disturbing the nesting eagles, work may need to be halted or redirected to other areas until nesting and fledging are completed or the nest has otherwise failed for non-construction related reasons.

BIO-3: Protect western red bat.

1. To the extent practicable, construction shall be scheduled to avoid the birthing and pupping season for western red bat, which extends from May through August.
2. If it is not possible to schedule construction between September and April, preconstruction surveys for roosting bats shall be conducted by a qualified biologist to ensure that no active maternal colonies will be disturbed during Project implementation. A pre-construction survey shall be conducted no more than 14 days prior to the initiation of construction activities. During this survey, the qualified biologist shall inspect all potential colony substrates in and immediately adjacent to the impact areas for maternity roosts. If an active maternity roost is found close enough to the construction area to be disturbed by work activities, the qualified biologist shall determine the extent of a construction-free buffer to be established around the colony. If work cannot proceed without disturbing the colony, work

may need to be halted or redirected to other areas until young are able to fly or the colony has otherwise failed for non-construction related reasons.

BIO-5: Protect nesting birds.

1. To the extent practicable, construction shall be scheduled to avoid the nesting season, which extends from February through August.
2. If it is not possible to schedule construction between September and January, preconstruction surveys for nesting birds shall be conducted by a qualified biologist to ensure that no active nests will be disturbed during Project implementation. A pre-construction survey shall be conducted no more than 14 days prior to the initiation of construction activities. During this survey, the qualified biologist shall inspect all potential nest substrates in and immediately adjacent to the impact areas for nests. If an active nest is found close enough to the construction area to be disturbed by these activities, the qualified biologist shall determine the extent of a construction-free buffer to be established around the nest. If work cannot proceed without disturbing the nesting birds, work may need to be halted or redirected to other areas until nesting and fledging are completed or the nest has otherwise failed for non-construction related reasons.

CONCLUSION

The conclusions from the IS/MND remain unchanged.

V. CULTURAL RESOURCES

Environmental Issue Area	Adopted IS/MND Conclusion	Do Proposed Changes Involve New Impacts?	New Circumstances Involving New Impacts?	New Information Requiring Analysis or Verification?	Adopted IS/MND Mitigation Measures
<i>Would the project:</i>					
a. Cause a substantial adverse change in the significance of a historical resource as defined in §15064.5?	Less Than Significant Impact With Mitigation.	No. The additional Project components will not have significant impacts on a historical resource. Additional cultural/historical surveys were conducted for the new Project components and no historical resources were identified.	No. The additional Project components will not have significant impacts on a historical resource. Additional cultural/historical surveys were conducted for the new Project components and no historical resources were identified.	No. The additional Project components will not have significant impacts on a historical resource. Additional cultural/historical surveys were conducted for the new Project components and no historical resources were identified.	CUL - 1
b. Cause a substantial adverse change in the significance of an archaeological resource pursuant to §15064.5?	Less Than Significant Impact With Mitigation.	No. The additional Project components will not create any new impacts. No known historic, archaeological, or paleontological resources exist on site.	No. The additional Project components will not create any new impacts. No known historic, archaeological, or paleontological resources exist on site.	No. The additional Project components will not create any new impacts. No known historic, archaeological, or paleontological resources exist on site.	CUL - 1
c. Disturb any human remains, including those interred outside of formal cemeteries?	Less Than Significant Impact With Mitigation.	No. The additional Project components will not create any new impacts. No known historic resources, archaeological resources, or human remains exist on site.	No. The additional Project components will not create any new impacts. No known historic resources, archaeological resources, or human remains exist on site.	No. The additional Project components will not create any new impacts. No known historic resources, archaeological resources, or human remains exist on site.	CUL - 1

DISCUSSION

The previously adopted Mitigated Negative Declaration determined that the proposed Project would have a less than significant impact (with mitigation) on cultural resources. No cultural, historical or archaeological resources were identified for the Approved Project. However, mitigation measures were included in the event that undiscovered (buried) resources are present within the Project site. The proposed additional improvements described in Section 2.2 – Project Description will occur within the vicinity of the Approved Project as described in the original IS/MND. The additional components are similar to the Approved Project components (pipelines, manholes, staging areas, and other related components). Because of the additional Project components, an updated Cultural Resource Survey and Supplemental Report was prepared by ASM Affiliates, Inc. (Confidential Attachment B to this Addendum).

A background records search and Phase I cultural resources survey was conducted for the new Project components by ASM. The pedestrian survey concluded that 7 resources are within the Project area of potential effect (APE), of which, 5 are historic, 2 are prehistoric (CA-TUO-000010/ P-55-001040, CA-TUO-000005/ P-55-001036), and 1 is unknown. No new cultural resources were identified during the pedestrian survey.

While prehistoric site CA-TUO-10/ P-55-001040 as a whole is potentially eligible for recommendation into the National Register of Historic Places, the project APE is within a heavily disturbed historic railroad corridor that bisects the site. The railroad corridor and thus the Project APE therefore lack all components of integrity related to the prehistoric site and ASM finds no impact of project implementation within the project APE. Prehistoric site CA-TUO-000005/ P-55-001036 has no previous site record and survey efforts did not identify any prehistoric cultural components within the Project APE. The site as previously recorded is either mis-plotted or completely destroyed and no evidence of the prehistoric site is present. ASM finds no impact of Project implementation within the Project APE.

As the Project work involves ground-disturbing activities, there is a possibility for unrecorded cultural resources (including human remains) to be encountered during project implementation. If cultural resources are identified during project implementation activities ASM recommends construction activities halt within 100 feet until a SOI PQS qualified archaeologist can assess the site. If the Project could damage a historic property, construction should cease until a mitigation plan is implemented. If human remains are discovered by project personnel, all construction activities will halt within 100 feet of the discovery. Pursuant to PRC § 5097.98 and HSC § 7050.5, on-site personnel are to contact USACE,

who shall contact the Tuolumne County Coroner. If the Tuolumne County Coroner determines the remains are Native American, the NAHC will be contacted to identify most likely descendant.

In summary, it is anticipated that a *Finding of No Historic Properties Affected* will be determined for resources within the Project APE for purposes of Section 106. Furthermore, it is not anticipated that the Project would result in any adverse change in the significance of a historical or unique archaeological resource, as defined by CEQA.

Therefore, with mitigation, the Project will continue to have less than significant impacts on cultural resources.

FINAL IS/MND MITIGATION MEASURES

- CUL-1** In the event that archaeological remains are encountered at any time during development or ground-moving activities within the entire Project area, all work in the vicinity of the find should be halted until a qualified archaeologist can assess the discovery and take appropriate actions as necessary.

CONCLUSION

The conclusions from the IS/MND remain unchanged.

VI. Energy

Environmental Issue Area	Adopted IS/MND Conclusion	Do Proposed Changes Involve New Impacts?	New Circumstances Involving New Impacts?	New Information Requiring Analysis or Verification?	Adopted IS/MND Mitigation Measures
<i>Would the project:</i>					
a. Result in potentially significant environmental impact due to wasteful, inefficient, or unnecessary consumption of energy resources, during project construction or operation?	Less Than Significant Impact.	No. The project would not result in potentially significant environmental impact due to wasteful, inefficient, or unnecessary consumption of energy resources, during project construction or operation.	No. The project would not result in potentially significant environmental impact due to wasteful, inefficient, or unnecessary consumption of energy resources, during project construction or operation.	No. The project would not result in potentially significant environmental impact due to wasteful, inefficient, or unnecessary consumption of energy resources, during project construction or operation.	None.
b. Conflict with or obstruct a state or local plan for renewable energy or energy efficiency?	Less Than Significant Impact.	No. The project would not conflict with or obstruct a state or local plan for renewable energy or energy efficiency.	No. The project would not conflict with or obstruct a state or local plan for renewable energy or energy efficiency.	No. The project would not conflict with or obstruct a state or local plan for renewable energy or energy efficiency.	None.

DISCUSSION

The previously adopted Mitigated Negative Declaration determined that the proposed Project would have a less than significant impact associated with impact areas VI (a) and (b). The additional Project components described in Section 2.2 – Project Description herein will not substantially increase the severity of energy use. The proposed additions would be required to implement and be consistent with existing energy design standards at the local and state level, such as Title 24. The Project would also be subject to energy conservation requirements in the California Energy Code and CALGreen for the

Project. Adherence to state code requirements would ensure that the Project would not result in wasteful and inefficient use of non-renewable resources due to operation.

FINAL IS/MND MITIGATION MEASURES

None.

CONCLUSION

Any impacts resulting from energy use remain less than significant.

VII. GEOLOGY AND SOILS

Environmental Issue Area	Adopted IS/MND Conclusion	Do Proposed Changes Involve New Impacts?	New Circumstances Involving New Impacts?	New Information Requiring Analysis or Verification?	Adopted IS/MND Mitigation Measures
<i>Would the project:</i>					
a. Expose people or structures to potential substantial adverse effects, including the risk of loss, injury, or death involving:					
i. Rupture of a known earthquake fault, as delineated on the most recent Alquist-Priolo Earthquake Fault Zoning Map issued by the State Geologist for the area or based on other substantial evidence of a known fault? Refer to Division of Mines and Geology Special Publication 42.	Less Than Significant Impact.	No. The project would not be exposed to fault rupture.	No. The project would not be exposed to fault rupture.	No. The project would not be exposed to fault rupture.	None.
ii. Strong seismic ground shaking?	No Impact.	No. The project would not increase exposure to risks associated with strong seismic ground shaking.	No. The project would not increase exposure to risks associated with strong seismic ground shaking.	No. The project would not increase exposure to risks associated with strong seismic ground shaking.	None.
iii. Seismic-related ground failure, including liquefaction?	No Impact.	No. The project would not increase exposure to seismic-related ground	No. The project would not increase exposure to seismic-related ground	No. The project would not increase exposure to seismic-related	None.

Environmental Issue Area	Adopted IS/MND Conclusion	Do Proposed Changes Involve New Impacts?	New Circumstances Involving New Impacts?	New Information Requiring Analysis or Verification?	Adopted IS/MND Mitigation Measures
		failure including liquefaction.	failure including liquefaction.	ground failure including liquefaction.	
iv. Landslides?	No Impact.	No. The project would not increase exposure to landslides.	No. The project would not increase exposure to landslides.	No. The project would not increase exposure to landslides.	None.
b. Result in substantial soil erosion or the loss of topsoil?	Less Than Significant Impact.	No. The project would not result in soil erosion or the loss of topsoil.	No. The project would not result in soil erosion or the loss of topsoil.	No. The project would not result in soil erosion or the loss of topsoil.	None.
c. Be located on a geologic unit or soil that is unstable, or that would become unstable as a result of the project, and potentially result in on- or off-site landslide, lateral spreading, subsidence, liquefaction or collapse?	Less Than Significant Impact.	No. The project would not increase exposure to risks associated with unstable geologic units or soils.	No. The project would not increase exposure to risks associated with unstable geologic units or soils.	No. The project would not increase exposure to risks associated with unstable geologic units or soils.	None.
d. Be located on expansive soil, as defined in Table 18-1-B of the most recently adopted Uniform Building Code creating substantial risks to life or property?	Less Than Significant Impact.	No. The project would not increase exposure to risks associated with expansive soil.	No. The project would not increase exposure to risks associated with expansive soil.	No. The project would not increase exposure to risks associated with expansive soil.	None.
e. Have soils incapable of adequately supporting the use of septic tanks or alternative waste water disposal systems where sewers are not	No Impact.	No. The project would not implement septic tanks or alternative wastewater disposal systems.	No. The project would not implement septic tanks or alternative wastewater disposal systems.	No. The project would not implement septic tanks or alternative wastewater	None.

Environmental Issue Area	Adopted IS/MND Conclusion	Do Proposed Changes Involve New Impacts?	New Circumstances Involving New Impacts?	New Information Requiring Analysis or Verification?	Adopted IS/MND Mitigation Measures
available for the disposal of waste water?				disposal systems.	
f. Directly or indirectly destroy a unique paleontological resource or site or unique geologic feature?	Less Than Significant Impact.	No. The project would not impact paleontological resources.	No. The project would not impact paleontological resources.	No. The project would not impact paleontological resources.	None.

DISCUSSION

The previously adopted Mitigated Negative Declaration determined that the proposed Project would have no impact associated with impact areas VII (a-ii, a-iii, and a-iv), or (e), a less than significant impact associated with impact areas VII (a-i, a-ii, a-iii),(b), (c), (d) and (f). The original IS/MND identified that no active faults underlay the Project site and no substantial erosion or loss of topsoil will occur. Since no known surface expression of active faults is believed to cross the site, fault rupture through the site is not anticipated. The site is also not located on unstable soil. The same conclusions would apply to the proposed additional Project components described in Section 2.2 – Project Description herein. The Project does not include the use of septic tanks or other alternative wastewater disposal systems. No new impacts would occur.

FINAL IS/MND MITIGATION MEASURES

None.

CONCLUSION

The conclusions from the IS/MND remain unchanged.

VIII. GREENHOUSE GAS EMISSIONS

Environmental Issue Area	Adopted IS/MND Conclusion	Do Proposed Changes Involve New Impacts?	New Circumstances Involving New Impacts?	New Information Requiring Analysis or Verification?	Adopted IS/MND Mitigation Measures
<i>Would the project:</i>					
a. Generate greenhouse gas emissions, either directly or indirectly, that may have a significant impact on the environment?	Less Than Significant Impact.	No. The project would not generate a significant amount of greenhouse gas emissions.	No. The project would not generate a significant amount of greenhouse gas emissions.	No. The project would not generate a significant amount of greenhouse gas emissions.	None.
b. Conflict with an applicable plan, policy or regulation adopted for the purpose of reducing the emissions of greenhouse gases?	Less Than Significant Impact.	No. The project would not conflict with an applicable GHG reduction plan.	No. The project would not conflict with an applicable GHG reduction plan.	No. The project would not conflict with an applicable GHG reduction plan.	None.

DISCUSSION

The previously adopted Mitigated Negative Declaration determined that the proposed Project would have a less than significant impact associated with impact areas VIII (a) and (b). The additional Project components described in Section 2.2 – Project Description herein will not significantly increase the severity of greenhouse gas emissions or conflict with any applicable plans or policies pertaining to greenhouse gases, as these Project components would not result in the Project exceeding established greenhouse gas emission thresholds. Construction-related GHG emissions would occur for approximately twelve months and would cease following completion of the Project. The proposed Project is not a land-use development project that would generate vehicle trips and is not a roadway capacity increasing project that could carry additional vehicle trips. Therefore, the proposed Project would not result in a net increase in operational GHG emissions. The Air District rules and regulations identified in the IS/MND pertaining the original project description also apply to the additional Project components.

FINAL IS/MND MITIGATION MEASURES

None.

CONCLUSION

Any impacts resulting from greenhouse gas emissions remain less than significant.

IX. HAZARDS AND HAZARDOUS MATERIALS

Environmental Issue Area	Adopted IS/MND Conclusion	Do Proposed Changes Involve New Impacts?	New Circumstances Involving New Impacts?	New Information Requiring Analysis or Verification?	Adopted IS/MND Mitigation Measures
<i>Would the project:</i>					
a. Create a significant hazard to the public or the environment through the routine transport, use, or disposal of hazardous materials?	Less Than Significant Impact.	No. The project would not create new or increased impact involving hazardous materials.	No. The project would not create new or increased impact involving hazardous materials.	No. The project would not create new or increased impact involving hazardous materials.	None.
b. Create a significant hazard to the public or the environment through reasonably foreseeable upset and accident conditions involving the release of hazardous materials into the environment?	Less Than Significant Impact.	No. The project would not create additional significant hazard to the public or environmental through reasonably foreseeable upset and accident conditions.	No. The project would not create additional significant hazard to the public or environmental through reasonably foreseeable upset and accident conditions.	No. The project would not create additional significant hazard to the public or environmental through reasonably foreseeable upset and accident conditions.	None.
c. Emit hazardous emissions or handle hazardous or acutely hazardous materials, substances, or waste within one-quarter mile of an existing or proposed school?	Less Than Significant Impact.	No. There continues to be no school within one-quarter mile of the site.	No. There continues to be no school within one-quarter mile of the site.	No. There continues to be no school within one-quarter mile of the site.	None.
d. Be located on a site which is included on a list of hazardous materials sites compiled pursuant to Government Code Section 65962.5 and, as a result, would it create a significant hazard to the public or the environment?	No Impact.	No. The project is not designated as a site which is included on a list of hazardous materials sites compiled pursuant to Government Code Section 65962.5.	No. The project is not designated as a site which is included on a list of hazardous materials sites compiled pursuant to Government Code Section 65962.5.	No. The project is not designated as a site which is included on a list of hazardous materials sites compiled pursuant to Government Code Section 65962.5.	None.

Environmental Issue Area	Adopted IS/MND Conclusion	Do Proposed Changes Involve New Impacts?	New Circumstances Involving New Impacts?	New Information Requiring Analysis or Verification?	Adopted IS/MND Mitigation Measures
e. For a project located within an airport land use plan or, where such a plan has not been adopted, within two miles of a public airport or public use airport, would the project result in a safety hazard for people residing or working in the project area?	Less Than Significant Impact.	No. The project site is not within two miles of a public or private airport.	No. The project site is not within two miles of a public or private airport.	No. The project site is not within two miles of a public or private airport.	None.
f. Impair implementation of or physically interfere with an adopted emergency response plan or emergency evacuation plan?	Less Than Significant Impact.	No. The project would not impair emergency evacuation or response.	No. The project would not impair emergency evacuation or response.	No. The project would not impair emergency evacuation or response.	None.
g. Expose people or structures either directly or indirectly to a significant risk of loss, injury or death involving wildland fires.	Less Than Significant Impact.	No. The project would not expose people or structures either directly or indirectly to a significant risk of loss, injury or death involving wildland fires.	No. The project would not expose people or structures either directly or indirectly to a significant risk of loss, injury or death involving wildland fires.	No. The project would not expose people or structures either directly or indirectly to a significant risk of loss, injury or death involving wildland fires.	None.

DISCUSSION

The previously adopted Mitigated Negative Declaration determined that the proposed Project would have no impact associated with impact areas IX (d) and a less than significant impact associated with impact areas IX (a), (b), (c), (e), (f), and (g). The additional Project components described in Section 2.2 – Project Description herein will not increase any impacts associated with hazards and hazardous materials, as the additional components are related to the original Project and will not substantially increase the severity of hazard/hazardous materials impacts. The applicable rules and regulations identified in the original IS/MND regarding hazardous materials also apply to the additional area.

FINAL IS/MND MITIGATION MEASURES

None.

CONCLUSION

The conclusions from the IS/MND remain unchanged.

X. HYDROLOGY AND WATER QUALITY

Environmental Issue Area	Adopted IS/MND Conclusion	Do Proposed Changes Involve New Impacts?	New Circumstances Involving New Impacts?	New Information Requiring Analysis or Verification?	Adopted IS/MND Mitigation Measures
<i>Would the project:</i>					
a. Violate any water quality standards or waste discharge requirements or otherwise substantially degrade surface or ground water quality?	Less than Significant Impact.	No. The project would not violate water quality standards or waste discharge requirements.	No. The project would not violate water quality standards or waste discharge requirements.	No. The project would not violate water quality standards or waste discharge requirements.	None.
b. Substantially decrease groundwater supplies or interfere substantially with groundwater recharge such that the project may impede sustainable groundwater management of the basin?	Less than Significant Impact.	No. The project would not substantially deplete groundwater resources or impair groundwater recharge.	No. The project would not substantially deplete groundwater resources or impair groundwater recharge.	No. The project would not substantially deplete groundwater resources or impair groundwater recharge.	None.
c. Substantially alter the existing drainage pattern of the site or area, including through the alteration of the course of a stream or river or through the addition of impervious surfaces, in a manner which would:					
i. Result in substantial erosion or siltation on or off site;	Less than Significant Impact.	No. The project would not result in substantial erosion or siltation on or off site.	No. The project would not result in substantial erosion or siltation on or off site.	No. The project would not result in substantial erosion or siltation on or off site.	None.
ii. Substantially increase the rate or amount of surface runoff in a manner which would result in flooding on or offsite;	Less than Significant Impact.	No. The Project would not substantially increase the rate or amount of surface runoff in a manner which	No. The Project would not substantially increase the rate or amount of surface runoff in a manner which	No. The Project would not substantially increase the rate or amount of surface runoff in a manner which	

Environmental Issue Area	Adopted IS/MND Conclusion	Do Proposed Changes Involve New Impacts?	New Circumstances Involving New Impacts?	New Information Requiring Analysis or Verification?	Adopted IS/MND Mitigation Measures
		would result in flooding on or offsite.	would result in flooding on or offsite.	would result in flooding on or offsite.	
iii. Create or contribute runoff water which would exceed the capacity of existing or planned stormwater drainage systems or provide substantial additional sources of polluted runoff; or	Less than Significant Impact.	No. The Project would not create or contribute runoff water which would exceed the capacity of existing or planned stormwater drainage systems or provide substantial additional sources of polluted runoff.	No. The Project would not create or contribute runoff water which would exceed the capacity of existing or planned stormwater drainage systems or provide substantial additional sources of polluted runoff.	No. The Project would not create or contribute runoff water which would exceed the capacity of existing or planned stormwater drainage systems or provide substantial additional sources of polluted runoff.	None.
iv. Impede or redirect flood flows?	Less than Significant Impact.	No. The Project would not impede or redirect flood flows.	No. The Project would not impede or redirect flood flows.	No. The Project would not impede or redirect flood flows.	None.
d. In flood hazard, tsunami, or seiche zones, risk release of pollutants due to project inundation?	No Impact.	No. The project would not risk release of pollutants due to project inundation.	No. The project would not risk release of pollutants due to project inundation.	No. The project would not risk release of pollutants due to project inundation.	None.
e. Conflict with or obstruct implementation of a water quality control plan or sustainable groundwater management plan?	No Impact.	No. The project would not conflict with or obstruct implementation of a water quality control plan or sustainable groundwater management plan?	No. The project would not conflict with or obstruct implementation of a water quality control plan or sustainable groundwater management plan?	No. The project would not conflict with or obstruct implementation of a water quality control plan or sustainable groundwater management plan?	None.

DISCUSSION

The previously adopted Mitigated Negative Declaration determined that the proposed Project would have a less than significant impact on hydrology and water quality. The additional Project components described in Section 2.2 – Project Description herein will not increase any impacts associated with hydrology and water quality, as the additional components are related to the original Project and will not substantially increase the severity of hydrology or water quality impacts. The applicable rules and regulations identified in the original IS/MND regarding hydrology and water quality also apply to the additional area.

FINAL IS/MND MITIGATION MEASURES

None.

CONCLUSION

The conclusions from the IS/MND remain unchanged.

XI. LAND USE AND PLANNING

Environmental Issue Area	Adopted IS/MND Conclusion	Do Proposed Changes Involve New Impacts?	New Circumstances Involving New Impacts?	New Information Requiring Analysis or Verification?	Adopted IS/MND Mitigation Measures
<i>Would the project:</i>					
a. Physically divide an established community?	No Impact.	No. The project would not divide an established community.	No. The project would not divide an established community.	No. The project would not divide an established community.	None.
b. Conflict with any applicable land use plan, policy, or regulation of an agency with jurisdiction over the project (including, but not limited to the General Plan, specific plan, local coastal program, or zoning ordinance) adopted for the purpose of avoiding or mitigating an environmental effect?	No Impact.	No. The project is consistent with the allowable land use.	No. The project is consistent with the allowable land use.	No. The project is consistent with the allowable land use.	None.

DISCUSSION

The previously adopted Mitigated Negative Declaration determined that the proposed Project would have no impact on land use and planning. The inclusion of the additional Project components will not result in any changes to land use designations or otherwise conflict with any plans or policies, as the additional improvements are related to the activities evaluated in the original IS/MND and the additional improvements will not significantly increase the severity of these impacts.

FINAL IS/MND MITIGATION MEASURES

None.

CONCLUSION

The conclusions from the IS/MND remain unchanged.

XII. MINERAL RESOURCES

Environmental Issue Area	Adopted IS/MND Conclusion	Do Proposed Changes Involve New Impacts?	New Circumstances Involving New Impacts?	New Information Requiring Analysis or Verification?	Adopted IS/MND Mitigation Measures
<i>Would the project:</i>					
a. Result in the loss of availability of a known mineral resource that would be of value to the region and the residents of the state?	No Impact.	No. The project would not result in the loss of known mineral resources.	No. The project would not result in the loss of known mineral resources.	No. The project would not result in the loss of known mineral resources.	None.
b. Result in the loss of availability of a locally important mineral resource recovery site delineated on a local general plan, specific plan or other land use plan?	No Impact.	No. The project would not result in the loss of known mineral resources.	No. The project would not result in the loss of known mineral resources.	No. The project would not result in the loss of known mineral resources.	None.

DISCUSSION

The previously adopted Mitigated Negative Declaration determined that the proposed Project would have no impact on mineral resources. There are no known mineral resources of importance to the region and the Project site is not designated under the County’s General Plan as an important mineral resource recovery site. The inclusion of the additional Project components will not result in any additional impacts to mineral resources.

FINAL IS/MND MITIGATION MEASURES

None.

CONCLUSION

The conclusions from the IS/MND remain unchanged.

XIII. NOISE

Environmental Issue Area	Adopted IS/MND Conclusion	Do Proposed Changes Involve New Impacts?	New Circumstances Involving New Impacts?	New Information Requiring Analysis or Verification?	Adopted IS/MND Mitigation Measures
<i>Would the project:</i>					
a. Generation of a substantial temporary or permanent increase in ambient noise levels in the vicinity of the project in excess of standards established in the local general plan or noise ordinance, or applicable standards of other agencies?	Less Than Significant Impact.	No. The project would not generate a substantial temporary or permanent increase in ambient noise levels in the vicinity of the project in excess of standards established in the local general plan or noise ordinance, or applicable standards of other agencies.	No. The project would not generate a substantial temporary or permanent increase in ambient noise levels in the vicinity of the project in excess of standards established in the local general plan or noise ordinance, or applicable standards of other agencies.	No. The project would not generate a substantial temporary or permanent increase in ambient noise levels in the vicinity of the project in excess of standards established in the local general plan or noise ordinance, or applicable standards of other agencies.	None.
b. Generation of excessive groundborne vibration or groundborne noise levels?	Less Than Significant Impact.	No. The project would not generate excessive groundborne vibration or groundborne noise levels.	No. The project would not generate excessive groundborne vibration or groundborne noise levels.	No. The project would not generate excessive groundborne vibration or groundborne noise levels.	None.
c. For a project located within the vicinity of a private airstrip or an airport land use plan or, where such a plan has not been adopted, within two miles of a public airport or public use airport, would the project expose people residing or working in the project area to excessive noise levels?	Less Than Significant Impact.	No. There are no public or private airports or airstrips in the area.	No. There are no public or private airports or airstrips in the area.	No. There are no public or private airports or airstrips in the area.	None.

DISCUSSION

The previously adopted Mitigated Negative Declaration determined that the proposed Project would have a less than significant impact associated with noise. The additional Project components described in Section 2.2 – Project Description herein will not substantially increase any noise impacts. Once operational, the Project will not result in an on-going increase in ambient noise, as the sewer collection system does not itself produce noise. During the proposed Project construction, noise from construction related activities will contribute to the noise environment in the immediate vicinity. The distinction between short-term construction noise impacts and long-term operational noise impacts is a typical one in both CEQA documents and local noise ordinances, which generally recognize the reality that short-term noise from construction is inevitable and cannot be mitigated beyond a certain level. Thus, local agencies frequently tolerate short-term noise at levels that they would not accept for permanent noise sources. A more severe approach would be impractical and might preclude the kind of construction activities that are to be expected from time to time. Most residents recognize this reality and expect to hear construction activities on occasion. The inclusion of the additional Project components will not result in any significant additional impacts to noise.

FINAL IS/MND MITIGATION MEASURES

None.

CONCLUSION

The conclusions from the IS/MND remain unchanged.

XIV. POPULATION AND HOUSING

Environmental Issue Area	Adopted IS/MND Conclusion	Do Proposed Changes Involve New Impacts?	New Circumstances Involving New Impacts?	New Information Requiring Analysis or Verification?	Adopted IS/MND Mitigation Measures
<i>Would the project:</i>					
a. Induce substantial population growth in an area, either directly (for example, by proposing new homes and businesses) or indirectly (for example, through extension of roads or other infrastructure)?	Less Than Significant Impact.	No. The project would not induce substantial growth in the project area.	No. The project would not induce substantial growth in the project area.	No. The project would not induce substantial growth in the project area.	None.
b. Displace substantial numbers of existing housing, necessitating the construction of replacement housing elsewhere?	Less Than Significant Impact.	No. The project will not displace existing housing.	No. The project will not displace existing housing.	No. The project will not displace existing housing.	None.

DISCUSSION

The previously adopted Mitigated Negative Declaration determined that the proposed Project would have a less than significant impact associated with population and housing. There are no new homes or businesses associated with the proposed Project, nor would Project implementation displace people or housing. The proposed Project is needed to improve existing sewer collection facilities. The additional Project components described in Section 2.2 – Project Description herein does increase any impacts to population and housing.

FINAL IS/MND MITIGATION MEASURES

None.

CONCLUSION

The conclusions from the IS/MND remain unchanged.

XV. PUBLIC SERVICES

Environmental Issue Area	Adopted IS/MND Conclusion	Do Proposed Changes Involve New Impacts?	New Circumstances Involving New Impacts?	New Information Requiring Analysis or Verification?	Adopted IS/MND Mitigation Measures
<i>Would the project:</i>					
a. Would the project result in substantial adverse physical impacts associated with the provision of new or physically altered governmental facilities, need for new or physically altered governmental facilities, the construction of which could cause significant environmental impacts, in order to maintain acceptable service ratios, response times or other performance objectives for any of the public services:					
Fire protection?	Less Than Significant Impact.	No. The project would not result in a need for new or expanded fire protection facilities.	No. The project would not result in a need for new or expanded fire protection facilities.	No. The project would not result in a need for new or expanded fire protection facilities.	None.
Police protection?	Less Than Significant Impact.	No. The project would not result in a need for new or expanded police protection facilities.	No. The project would not result in a need for new or expanded police protection facilities.	No. The project would not result in a need for new or expanded police protection facilities.	None.
Schools?	Less Than Significant Impact.	No. The project would not result in a need for new or	No. The project would not result in a need for new or	No. The project would not result in a need for new or	None.

		expanded school facilities.	expanded school facilities.	expanded school facilities.	
Parks?	Less Than Significant Impact.	No. The project would not result in a need for new or expanded park facilities.	No. The project would not result in a need for new or expanded park facilities.	No. The project would not result in a need for new or expanded park facilities.	None.
Other public facilities?	Less Than Significant Impact.	No. The project would not result in a need for new or expanded other facilities.	No. The project would not result in a need for new or expanded other facilities.	No. The project would not result in a need for new or expanded other facilities.	None.

DISCUSSION

The previously adopted Mitigated Negative Declaration determined that the proposed Project would have a less than significant impact on public services. The proposed Project would not directly or indirectly induce population growth and thus would not increase the need for public services. The additional Project components described in Section 2.2 – Project Description herein does not increase any impacts to public services.

FINAL IS/MND MITIGATION MEASURES

None.

CONCLUSION

The conclusions from the IS/MND remain unchanged.

XVI. RECREATION

Environmental Issue Area	Adopted IS/MND Conclusion	Do Proposed Changes Involve New Impacts?	New Circumstances Involving New Impacts?	New Information Requiring Analysis or Verification?	Adopted IS/MND Mitigation Measures
<i>Would the project:</i>					
a. Would the project increase the use of existing neighborhood and regional parks or other recreational facilities such that substantial physical deterioration of the facility would occur or be accelerated?	No Impact.	No. The project would not result in the deterioration of an existing park.	No. The project would not result in the deterioration of an existing park.	No. The project would not result in the deterioration of an existing park.	None.
b. Does the project include recreational facilities or require the construction or expansion of recreational facilities which might have an adverse physical effect on the environment?	No Impact.	No. The project would not result in a need for new or expanded park facilities.	No. The project would not result in a need for new or expanded park facilities.	No. The project would not result in a need for new or expanded park facilities.	None.

DISCUSSION

The previously adopted Mitigated Negative Declaration determined that the proposed Project would have no impact on recreation. The proposed Project does not include the construction of residential uses and would not directly or indirectly induce population growth. Therefore, the proposed Project would not cause physical deterioration of existing recreational facilities from increased usage or result in the need for new or expanded recreational facilities. The additional Project components described in Section 2.2 – Project Description herein does not increase any impacts to recreation.

FINAL IS/MND MITIGATION MEASURES

None.

CONCLUSION

The conclusions from the IS/MND remain unchanged.

XVII. TRANSPORTATION/TRAFFIC

Environmental Issue Area	Adopted IS/MND Conclusion	Do Proposed Changes Involve New Impacts?	New Circumstances Involving New Impacts?	New Information Requiring Analysis or Verification?	Adopted IS/MND Mitigation Measures
<i>Would the project:</i>					
a. Conflict with a program plan, ordinance or policy addressing the circulation system, including transit, roadway, bicycle and pedestrian facilities?	Less Than Significant Impact.	No. The project would not conflict with a program plan, ordinance or policy addressing the circulation system, including transit, roadway, bicycle and pedestrian facilities.	No. The project would not conflict with a program plan, ordinance or policy addressing the circulation system, including transit, roadway, bicycle and pedestrian facilities.	No. The project would not conflict with a program plan, ordinance or policy addressing the circulation system, including transit, roadway, bicycle and pedestrian facilities.	None.
b. Would the project conflict or be inconsistent with CEQA Guidelines section 15064.3, subdivision (b)?	Less Than Significant Impact.	No. The project would not conflict with or be inconsistent with CEQA Guidelines section 15064.3, subdivision (b).	No. The project would not conflict with or be inconsistent with CEQA Guidelines section 15064.3, subdivision (b).	No. The project would not conflict with or be inconsistent with CEQA Guidelines section 15064.3, subdivision (b).	None
c. Substantially increase hazards due to a geometric design feature (e.g., sharp curves or dangerous intersections) or incompatible uses (e.g., farm equipment)?	Less Than Significant Impact.	No. The project would not substantially increase hazards due to a geometric design feature (e.g., sharp curves or dangerous intersections) or incompatible uses (e.g., farm equipment).	No. The project would not substantially increase hazards due to a geometric design feature (e.g., sharp curves or dangerous intersections) or incompatible uses (e.g., farm equipment).	No. The project would not substantially increase hazards due to a geometric design feature (e.g., sharp curves or dangerous intersections) or incompatible uses (e.g., farm equipment).	None.
d. Result in inadequate emergency access?	Less Than Significant Impact.	No. The project would not result in	No. The project would not result in	No. The project would not result in	None.

Environmental Issue Area	Adopted IS/MND Conclusion	Do Proposed Changes Involve New Impacts?	New Circumstances Involving New Impacts?	New Information Requiring Analysis or Verification?	Adopted IS/MND Mitigation Measures
		inadequate emergency access.	inadequate emergency access.	inadequate emergency access.	

DISCUSSION

The previously adopted Mitigated Negative Declaration determined that the proposed Project would have a less than significant impact on transportation. The proposed Project would not cause a substantial increase in traffic, reduce the existing level of service, create any additional congestion at any intersections, or be inconsistent with CEQA Guidelines Section 15064.3. The construction of pipelines and appurtenances will not generate any additional traffic (beyond construction-related traffic trips) and as such, level of service standards would not be exceeded. There are no components of the proposed Project that would increase hazards due to a geometric design feature. As traffic due to construction activities would be temporary in nature, the proposed Project would not cause a substantial increase in traffic or result in inadequate emergency access. Construction schedules pertaining to pipelines within roadways will be coordinated with sheriff/fire/emergency services. Adequate emergency access will be maintained at all times.

Once installed, the new pipelines and manholes would not generate significant additional traffic trips per day, other than as needed for periodic maintenance. The Project would not conflict with a program plan, ordinance, or policy addressing the circulation system. The additional Project components described in Section 2.2 – Project Description herein does not increase any impacts to transportation.

FINAL IS/MND MITIGATION MEASURES

None.

CONCLUSION

The conclusions from the IS/MND remain unchanged.

XVIII. TRIBAL CULTURAL RESOURCES

Environmental Issue Area	Adopted IS/MND Conclusion	Do Proposed Changes Involve New Impacts?	New Circumstances Involving New Impacts?	New Information Requiring Analysis or Verification?	Adopted IS/MND Mitigation Measures
<i>Would the project:</i>					
a. Would the project cause a substantial adverse change in the significance of a tribal cultural resource, defined in Public Resources Code section 21074 as either a site, feature, place, cultural landscape that is geographically defined in terms of the size and scope of the landscape, sacred place, or object with cultural value to a California Native American tribe, and that is:					
h. Listed or eligible for listing in the California Register of Historical Resources, or in a local register of historical resources as defined in Public Resources Code section 5020.1(k), or	Less Than Significant Impact.	No. The project is not listed or eligible for listing in the California Register of Historical Resources, or in a local register of historical resources as defined in Public Resources Code section 5020.1(k).	No. The project is not listed or eligible for listing in the California Register of Historical Resources, or in a local register of historical resources as defined in Public Resources Code section 5020.1(k).	No. The project is not listed or eligible for listing in the California Register of Historical Resources, or in a local register of historical resources as defined in Public Resources Code section 5020.1(k).	None.
ii. A resource determined by the lead agency, in its discretion and supported by substantial evidence,	Less Than Significant Impact.	No. The project is not a resource determined by the lead	No. The project is not a resource determined by the lead	No. The project is not a resource determined by the lead	None.

<p>to be significant pursuant to criteria set forth in subdivision (c) of Public Resources Code Section 5024.1. In applying the criteria set forth in subdivision (c) of Public Resource Code Section 5024.1, the lead agency shall consider the significance of the resource to a California Native American tribe.</p>		<p>agency, in its discretion and supported by substantial evidence, to be significant pursuant to criteria set forth in subdivision (c) of Public Resources Code Section 5024.1. In applying the criteria set forth in subdivision (c) of Public Resource Code Section 5024.1, the lead agency shall consider the significance of the resource to a California Native American tribe.</p>	<p>agency, in its discretion and supported by substantial evidence, to be significant pursuant to criteria set forth in subdivision (c) of Public Resources Code Section 5024.1. In applying the criteria set forth in subdivision (c) of Public Resource Code Section 5024.1, the lead agency shall consider the significance of the resource to a California Native American tribe.</p>	<p>agency, in its discretion and supported by substantial evidence, to be significant pursuant to criteria set forth in subdivision (c) of Public Resources Code Section 5024.1. In applying the criteria set forth in subdivision (c) of Public Resource Code Section 5024.1, the lead agency shall consider the significance of the resource to a California Native American tribe.</p>	
--	--	---	---	---	--

DISCUSSION

The previously adopted Mitigated Negative Declaration determined that the proposed Project would have a less than significant impact on Tribal Cultural Resources. Tribal consultation was undertaken for the Approved Project in November 2018, the results of which are summarized in the original IS/MND. No tribes requested formal consultation for the Approved Project. The proposed additional

improvements described in Section 2.2 – Project Description will occur within the vicinity of the Approved Project as described in the original IS/MND. The additional components are similar to the Approved Project components (pipelines, manholes, staging areas, and other related components). Because of the additional Project components, additional tribal consultation was undertaken for the new Project components as described in more detail in the updated Cultural Resource Survey and Supplemental Report was prepared by ASM Affiliates, Inc. (Confidential Attachment B to this Addendum).

A Sacred Lands File (SLF) request was submitted to the Native American Heritage Commission (NAHC) on September 13, 2021. The NAHC responded on October 23, 2021, with a negative result to the SLF search. Additionally, the NAHC provided a list of Native American tribes who have knowledge of the project area. ASM wrote to contacts provided by the NAHC for additional information pertaining to the project APE on October 26, 2021. Follow-up emails were sent as well. At the time of this report publication one response has been received from the Washoe Tribe of Nevada and California deferring to the Tuolumne Miwuk Tribe on October 26, 2021. Appendix D of Attachment B provides requests to the NAHC, their results, and outreach communication to Native American tribes.

Therefore, the additional Project components will not increase the severity of tribal cultural resource impacts.

FINAL IS/MND MITIGATION MEASURES

None.

CONCLUSION

The conclusions from the IS/MND remain unchanged.

XIX. UTILITIES AND SERVICE SYSTEMS

Environmental Issue Area	Adopted IS/MND Conclusion	Do Proposed Changes Involve New Impacts?	New Circumstances Involving New Impacts?	New Information Requiring Analysis or Verification?	Adopted IS/MND Mitigation Measures
<i>Would the project:</i>					
a. Require or result in the relocation or construction of new or expanded water, wastewater treatment or storm water drainage, electric power, natural gas, or telecommunications facilities, the construction or relocation of which could cause significant environmental effects?	Less Than Significant Impact.	No. The project itself is a water facility and would not require or result in the relocation or construction of new or expanded wastewater treatment or storm water drainage, electric power, natural gas, or telecommunications facilities, the construction or relocation of which could cause significant environmental effects.	No. The project itself is a water facility and would not require or result in the relocation or construction of new or expanded wastewater treatment or storm water drainage, electric power, natural gas, or telecommunications facilities, the construction or relocation of which could cause significant environmental effects.	No. The project itself is a water facility and would not require or result in the relocation or construction of new or expanded wastewater treatment or storm water drainage, electric power, natural gas, or telecommunications facilities, the construction or relocation of which could cause significant environmental effects.	None.
b. Have sufficient water supplies available to serve the project and reasonably foreseeable future development during normal, dry and multiple dry years?	No Impact.	No. The Project will have sufficient water supplies available to serve the project and reasonably foreseeable future development during normal, dry and multiple dry years.	No. The Project will have sufficient water supplies available to serve the project and reasonably foreseeable future development during normal, dry and multiple dry years.	No. The Project will have sufficient water supplies available to serve the project and reasonably foreseeable future development during normal, dry and multiple dry years.	None.
c. Result in a determination by the wastewater treatment provider which serves or may serve the project	Less Than Significant Impact.	No. The project would not result in a determination by the wastewater treatment provider which serves or	No. The project would not result in a determination by the wastewater treatment provider which serves or	No. The project would not result in a determination by the wastewater treatment	None.

Environmental Issue Area	Adopted IS/MND Conclusion	Do Proposed Changes Involve New Impacts?	New Circumstances Involving New Impacts?	New Information Requiring Analysis or Verification?	Adopted IS/MND Mitigation Measures
that it has adequate capacity to serve the project's projected demand in addition to the provider's existing commitments?		may serve the project that it does not has adequate capacity to serve the project's projected demand in addition to the provider's existing commitments.	may serve the project that it does not has adequate capacity to serve the project's projected demand in addition to the provider's existing commitments.	provider which serves or may serve the project that it does not has adequate capacity to serve the project's projected demand in addition to the provider's existing commitments.	
d. Generate solid waste in excess of State or local standards, or in excess of the capacity of local infrastructure, or otherwise impair the attainment of solid waste reduction goals?	No Impact.	No. The project would not generate solid waste in excess of State or local standards, or in excess of the capacity of local infrastructure, or otherwise impair the attainment of solid waste reduction goals.	No. The project would not generate solid waste in excess of State or local standards, or in excess of the capacity of local infrastructure, or otherwise impair the attainment of solid waste reduction goals.	No. The project would not generate solid waste in excess of State or local standards, or in excess of the capacity of local infrastructure, or otherwise impair the attainment of solid waste reduction goals.	None.
e. Comply with federal, state, and local management and reduction statutes and regulations related to solid waste?	No Impact.	No. The Project will comply with federal, state, and local management and reduction statutes and regulations related to solid waste.	No. The Project will comply with federal, state, and local management and reduction statutes and regulations related to solid waste.	No. The Project will comply with federal, state, and local management and reduction statutes and regulations related to solid waste.	None.

DISCUSSION

The previously adopted Mitigated Negative Declaration determined that the proposed Project would have no impact associated with impact area XIX (b), (d), and (e) and a less than significant impact associated with impact areas XIX (a) and (c). The proposed Project includes improvements to the

District's existing sewer collection system, the results of which would not exceed any wastewater treatment requirements set by the Regional Water Quality Control Board. The Project does not include any expansion of wastewater treatment facilities or processes. The Project is intended to rehabilitate/replace a deteriorating sewer collection system. The additional Project components described in Section 2.2 – Project Description herein does not increase any impacts to utilities and service systems, as it is directly related to the original Project.

FINAL IS/MND MITIGATION MEASURES

None.

CONCLUSION

The conclusions from the IS/MND remain unchanged.

XX. WILDFIRE

Environmental Issue Area	Adopted IS/MND Conclusion	Do Proposed Changes Involve New Impacts?	New Circumstances Involving New Impacts?	New Information Requiring Analysis or Verification?	Adopted IS/MND Mitigation Measures
<i>Would the project:</i>					
a. Substantially impair an adopted emergency response plan or emergency evacuation plan?	Less Than Significant Impact.	No. The project would not substantially impair an adopted emergency response plan or emergency evacuation plan.	No. The project would not substantially impair an adopted emergency response plan or emergency evacuation plan.	No. The project would not substantially impair an adopted emergency response plan or emergency evacuation plan.	None.
b. Due to slope, prevailing winds, and other factors, exacerbate wildfire risks, and thereby expose project occupants to, pollutant concentrations from a wildfire or the uncontrolled spread of a wildfire?	Less Than Significant Impact.	No. The project would not, due to slope, prevailing winds, and other factors, exacerbate wildfire risks, and thereby expose project occupants to, pollutant concentrations from a wildfire or the uncontrolled spread of a wildfire.	No. The project would not, due to slope, prevailing winds, and other factors, exacerbate wildfire risks, and thereby expose project occupants to, pollutant concentrations from a wildfire or the uncontrolled spread of a wildfire.	No. The project would not, due to slope, prevailing winds, and other factors, exacerbate wildfire risks, and thereby expose project occupants to, pollutant concentrations from a wildfire or the uncontrolled spread of a wildfire.	None
c. Require the installation or maintenance of associated infrastructure (such as roads, fuel breaks, emergency water sources, power lines or other utilities) that may exacerbate fire risk or that may result in temporary or	Less Than Significant Impact.	No. The project would not require the installation or maintenance of associated infrastructure (such as roads, fuel breaks, emergency water sources, power lines or	No. The project would not require the installation or maintenance of associated infrastructure (such as roads, fuel breaks, emergency water sources, power lines or	No. The project would not require the installation or maintenance of associated infrastructure (such as roads, fuel breaks, emergency water sources, power lines or	None.

Environmental Issue Area	Adopted IS/MND Conclusion	Do Proposed Changes Involve New Impacts?	New Circumstances Involving New Impacts?	New Information Requiring Analysis or Verification?	Adopted IS/MND Mitigation Measures
ongoing impacts to the environment?		other utilities) that may exacerbate fire risk or that may result in temporary or ongoing impacts to the environment.	other utilities) that may exacerbate fire risk or that may result in temporary or ongoing impacts to the environment.	other utilities) that may exacerbate fire risk or that may result in temporary or ongoing impacts to the environment.	
d. Expose people or structures to significant risks, including downslope or downstream flooding or landslides, as a result of runoff, post-fire slope instability, or drainage changes?	Less Than Significant Impact.	No. The project would not expose people or structures to significant risks, including downslope or downstream flooding or landslides, as a result of runoff, post-fire slope instability, or drainage changes.	No. The project would not expose people or structures to significant risks, including downslope or downstream flooding or landslides, as a result of runoff, post-fire slope instability, or drainage changes.	No. The project would not expose people or structures to significant risks, including downslope or downstream flooding or landslides, as a result of runoff, post-fire slope instability, or drainage changes.	None.

DISCUSSION

The previously adopted Mitigated Negative Declaration determined that the proposed Project would have a less than significant impact on or from wildfires. The proposed Project is located in areas that have been developed with urban uses within a forested area. The proposed Project includes improvements to the District’s existing sewer collection system, which will include underground pipelines and at-grade manholes. There is no increased risk or on-going risk of wildfire beyond existing conditions associated with the Project. The additional Project components described in Section 2.2 – Project Description herein does not increase any impacts to wildfires.

FINAL IS/MND MITIGATION MEASURES

None.

CONCLUSION

The conclusions from the IS/MND remain unchanged.

XXI. MANDATORY FINDINGS OF SIGNIFICANCE

Environmental Issue Area	Adopted IS/MND Conclusion	Do Proposed Changes Involve New Impacts?	New Circumstances Involving New Impacts?	New Information Requiring Analysis or Verification?	Adopted IS/MND Mitigation Measures
<i>Would the project:</i>					
a. Does the project have the potential to degrade the quality of the environment, substantially reduce the habitat of a fish or wildlife species, cause a fish or wildlife population to drop below self-sustaining levels, threaten to eliminate a plant or animal community, reduce the number or restrict the range of a rare or endangered plant or animal or eliminate important examples of the major periods of California history or prehistory?	Less Than Significant Impact With Mitigation.	No. The project would not degrade the quality of the environment, substantially reduce the habitat of a fish or wildlife species, cause a fish or wildlife population to drop below self-sustaining levels, threaten to eliminate a plant or animal community, reduce the number or restrict the range of a rare or endangered plant or animal, or eliminate important examples of the major periods of California history or prehistory.	No. The project would not degrade the quality of the environment, substantially reduce the habitat of a fish or wildlife species, cause a fish or wildlife population to drop below self-sustaining levels, threaten to eliminate a plant or animal community, reduce the number or restrict the range of a rare or endangered plant or animal, or eliminate important examples of the major periods of California history or prehistory.	No. The project would not degrade the quality of the environment, substantially reduce the habitat of a fish or wildlife species, cause a fish or wildlife population to drop below self-sustaining levels, threaten to eliminate a plant or animal community, reduce the number or restrict the range of a rare or endangered plant or animal, or eliminate important examples of the major periods of California history or prehistory.	BIO – 1 BIO – 2 BIO – 3 BIO – 4 BIO – 5 CUL – 1
b. Does the project have impacts that are individually limited, but cumulatively considerable? (“Cumulatively considerable” means that the incremental effects of a project are considerable when viewed in connection	Less Than Significant Impact.	No. The project would not have cumulatively considerable impacts.	No. The project would not have cumulatively considerable impacts.	No. The project would not have cumulatively considerable impacts.	None.

Environmental Issue Area	Adopted IS/MND Conclusion	Do Proposed Changes Involve New Impacts?	New Circumstances Involving New Impacts?	New Information Requiring Analysis or Verification?	Adopted IS/MND Mitigation Measures
with the effects of past projects, the effects of other current projects, and the effects of probable future projects)?					
c. Does the project have environmental effects which will cause substantial adverse effects on human beings, either directly or indirectly?	Less Than Significant Impact.	No. The project would not have environmental effects which will cause substantial adverse effects on human beings, either directly or indirectly.	No. The project would not have environmental effects which will cause substantial adverse effects on human beings, either directly or indirectly.	No. The project would not have environmental effects which will cause substantial adverse effects on human beings, either directly or indirectly.	None.

DISCUSSION

The previously adopted Mitigated Negative Declaration determined that the proposed Project would have a less than significant impact with mitigation regarding mandatory findings of significance. The additional Project components described in Section 2.2 – Project Description herein does not increase any impacts on the mandatory findings of significance.

FINAL IS/MND MITIGATION MEASURES

See Mitigation Measures throughout this document.

CONCLUSION

The conclusions from the IS/MND remain unchanged.

Attachments

Attachment A

Supplemental Biological Information

To: Groveland Community Services District
From: Travis Crawford, AICP
Date: November 22, 2021
Subject: Supplemental Biological Information – Downtown Groveland and Big Oak Flat Sewer Collection System Improvements

This Technical Memorandum provides supplemental biological information to the Groveland Community Services District's (District) *Downtown Groveland and Big Oak Flat Sewer Collection System Improvements Project* (Approved Project) Mitigated Negative Declaration (IS/MND), adopted on June 11, 2019 (State Clearinghouse #2019059053), and the associated *Biological Resources Evaluation* (prepared by Colibri Ecological Consulting and attached as an Appendix to the IS/MND). After filing the Notice of Determination for the Approved Project, minor changes were made to the Project which included adding some additional improvements (pipelines, manholes, staging areas, and other related components). As a result, supplemental biological information is being provided herein to evaluate the Project components that were not identified in the original Biological Evaluation.

Approved Project Biological Evaluation Background

As indicated above, a Biological Resources Evaluation (BRE) was conducted by Colibri Ecological Consulting for the original Approved Project. The Biological Evaluation included database searches through the California Natural Diversity Database (CNDDDB), followed by a reconnaissance survey of the original Project areas. The Approved Project will take place in three adjacent communities; Big Oak Flat, Groveland, and Pine Mountain Lake, in western Tuolumne County (see Figures 1 through 3). The three communities are within the Groveland Community Services District (CSD or District). Big Oak Flat and Groveland lie along State Route 120 and east of State Route 49. Pine Mountain Lake is located north of State Route 120 and west of Groveland. Yosemite National Park lies approximately 23 miles southeast of the Project sites. Project elevation ranges from approximately 2800 feet to approximately 3100 feet above mean sea level. The Approved Project BRE is summarized as follows:

Critical Habitat

The BRE concludes the Project will have no effect on critical habitat as no critical habitat has been designated or proposed in the survey area.

Special-Status Species

Bald eagle, northwestern pond turtle, and western red bat were identified in the desktop review as having potential to occur on or near the Project site due to the presence of habitat in the survey area:

- Bald eagle requires large trees near water bodies for nesting. Suitable trees were present near Pine Mountain Lake. Therefore, the BRE concludes the Project may affect but is not likely to adversely affect bald eagle.
- Northwestern pond turtle uses aquatic habitats such as creeks, streams, or irrigation ditches for movements and foraging and adjacent upland areas for egg laying. The Project site is adjacent to and crosses multiple drainages that could support this species. Therefore, the BRE concludes the Project may affect but is not likely to adversely affect northwestern pond turtle.
- Western red bat uses trees, tree cavities, and peeling bark for roosting. Because several riparian trees that qualify as habitat will likely be removed to facilitate sewer pipe installation activities, the BRE concludes the Project may affect but is not likely to adversely affect this species.

Additionally, the BRE concludes that the Project will have no effect on other special-status species due either to the lack of habitat for such species in the survey area or for some plants because they were found to be absent during appropriate seasonal surveys.

Migratory Birds

The BRE concludes the Project may affect but is not likely to adversely affect nesting migratory birds.

Regulated Habitats

The BRE concludes the Project may affect and is likely to adversely affect three regulated habitats. These habitats consist of intermittent and ephemeral streams under the regulatory jurisdiction of the USACE, the RWQCB, and the CDFW. As such, Clean Water Act Section 404 permits and 401 certifications as well as California Fish and Game Code Section 1602



notifications are being prepared for impacts at these work locations. However, the project will have no effect on federally protected wetlands or other regulated habitats under CEQA-Plus purview as no such habitats were found in the survey area.

The Project could have a substantial, direct adverse effect on bald eagle. Bald eagle requires large trees within about one mile of large, open water bodies for nesting. The Project site is within one mile of Pine Mountain Lake, the nearest water body that could support nesting by this species. Although the two trees, both Pacific willow (*Salix lasiandra*), that may need to be removed to facilitate Project construction are too small to support nesting, construction-related disturbance could result in the incidental loss of reproduction. Therefore, Mitigation Measure BIO-1 (below) was included in the conditions of approval to reduce the potential impact to a less-than significant level.

The Project could also have a substantial, direct adverse effect on northwestern pond turtle, a native reptile designated by the CDFW as a Species of Special Concern. Northwestern pond turtle uses a variety of aquatic habitats including streams, creeks, ponds, lakes, and canals for shelter, foraging, and basking and lays its eggs in upland areas adjacent to these aquatic habitats. Because the Project will involve excavation and staging in and adjacent to multiple sections of intermittent and ephemeral streams that could support this species at some time during the year, incidental loss of animals or eggs could occur. Therefore, Mitigation Measure BIO-2 (below) was included in the conditions of approval to reduce the potential impact to a less-than-significant level.

The Project could also have a substantial, direct adverse effect on western red bat, a native bat species designated by the CDFW as a Species of Special Concern. Western red bat uses trees for roosting and pupping habitat. This species often uses trees on the edges of streams, open fields, and urban areas, approximately 2-40 feet above ground level (Zeiner et al. 1988-1990). Because the Project may require that riparian trees be removed at two work locations, incidental loss of animals or young from these trees could occur. Therefore, Mitigation Measure BIO-3 (below) was included in the conditions of approval to reduce the potential impact to a less-than-significant level.

The Approved Project will impact two intermittent streams, Rattlesnake Creek in Big Oak Flat and an unnamed stream in Pine Mountain Lake. **Note:** the updated components of the Project



(associated with this Addendum) will not impact any streams. Both streams associated with the Approved Project support white alder (*Alnus rhombifolia*) and Pacific willow, two species of native riparian tree. In both cases, work activities will involve excavating an open trench across the stream to replace the existing sewer pipeline. This work could impact four white alders in Big Oak Flat (two 4-inch diameter at breast height [DBH], one 3-inch DBH, and one 2-inch DBH) and two Pacific willows in Pine Mountain Lake (two 8-inch DBH). Work activities will also impact Himalayan blackberry (*Rubus armeniacus*), a nonnative vine, along Rattlesnake Creek in Big Oak Flat. Based on the abundance of this plant species in the local area and at this location, including on and adjacent to the impact area, recolonization after Project completion is expected to occur naturally and probably within one growing season. Therefore, the BRE concluded that Project related impacts to Himalayan blackberry will be negligible, don't meet the threshold of significance, and consequently require no mitigation. However, to mitigate potential impacts to white alder and Pacific willow at these two drainages, Mitigation Measure BIO-4 (below) was included in the conditions of approval to reduce the potential impact to a less-than-significant level.

The Project has the potential to impede the use of nursery sites for native birds protected under the Migratory Bird Treaty Act and California Fish and Game Code. Migratory birds are expected to nest on and near the Project site. Construction disturbance during the breeding season could result in the incidental loss of fertile eggs or nestlings or otherwise lead to nest abandonment. Disturbance that causes nest abandonment or loss of reproductive effort is considered take by the CDFW. Loss of fertile eggs or nesting birds, or any activities resulting in nest abandonment, could constitute a significant impact if the species is particularly rare in the region. Construction activities such as excavation, trenching, water main or water valve installation, and mobilizing or demobilizing construction equipment that disturb a nesting bird on the site or immediately adjacent to the construction zone could constitute a significant impact. The BRE recommends that Mitigation Measure BIO-5 (below) be included in the conditions of approval to reduce the potential impact to a less-than-significant level.

Original IS/MND Mitigation Measures:

BIO-1: Protect nesting bald eagle.

1. To the extent practicable, construction shall be scheduled to avoid the nesting season, which extends from February through July.



2. If it is not possible to schedule construction between August and January, preconstruction surveys for nesting bald eagles shall be conducted by a qualified biologist to ensure that no active nests will be disturbed during Project implementation. A pre-construction survey shall be conducted no more than 14 days prior to the initiation of construction activities. During this survey, the qualified biologist shall inspect all potential nest substrates (large trees) within 0.5-miles of the impact areas in Pine Mountain Lake for nests. If an active nest is found close enough to the construction area to be disturbed by Project activities, the qualified biologist in consultation with the CDFW shall determine the extent of a construction-free buffer to be established around the nest. If work cannot proceed without disturbing the nesting eagles, work may need to be halted or redirected to other areas until nesting and fledging are completed or the nest has otherwise failed for non-construction related reasons.

BIO-2: Protect northwestern pond turtle.

1. To the extent practicable, construction in and adjacent to intermittent and ephemeral streams shall be scheduled to occur when these streams are dry (approximately mid-July through October) to avoid the possibility of northwestern pond turtle being present at the worksite.
2. If it is not possible to schedule construction between August and October, preconstruction surveys for northwestern pond turtle shall be conducted by a qualified biologist to determine if turtles are occupying streamside worksites. A pre-construction survey shall be conducted no more than 14 days prior to the initiation of construction activities. During this survey, the qualified biologist shall inspect all sections of stream within 300 feet of planned work activities, including adjacent upland areas, for turtles and nests; northwestern pond turtle nests in upland areas within several hundred feet of water in the spring, typically during the months of April and May. If a turtle or nest is found within 300 feet of the worksite, a qualified biological monitor shall remain on site during construction to ensure that no turtles or turtle nests are impacted by work activities. Any turtle found on or adjacent to the worksite shall be allowed to leave on its own.

BIO-3: Protect western red bat.

1. To the extent practicable, construction shall be scheduled to avoid the birthing and pupping season for western red bat, which extends from May through August.



2. If it is not possible to schedule construction between September and April, preconstruction surveys for roosting bats shall be conducted by a qualified biologist to ensure that no active maternal colonies will be disturbed during Project implementation. A pre-construction survey shall be conducted no more than 14 days prior to the initiation of construction activities. During this survey, the qualified biologist shall inspect all potential colony substrates in and immediately adjacent to the impact areas for maternity roosts. If an active maternity roost is found close enough to the construction area to be disturbed by work activities, the qualified biologist shall determine the extent of a construction-free buffer to be established around the colony. If work cannot proceed without disturbing the colony, work may need to be halted or redirected to other areas until young are able to fly or the colony has otherwise failed for non-construction related reasons.

BIO-4: Mitigate impacts to riparian vegetation.

1. To the extent practical, avoid impacting white alder and Pacific willow trees.
2. If impacts to white alder and Pacific willow trees are unavoidable, the District shall implement the tree replacement and maintenance requirements detailed in the Streamed Alteration Agreement issued by the CDFW for the Project. Those requirements are likely to involve replacing trees with a DBH of 4 inches or greater that are damaged or removed by replanting native species at a 3:1 ratio (replaced to lost) and ensuring a performance criterion of 70 percent survival of tree plantings for a minimum period of five consecutive years, including up to three years with supplemental irrigation and a minimum of two years without such assistance.

BIO-5: Protect nesting birds.

1. To the extent practicable, construction shall be scheduled to avoid the nesting season, which extends from February through August.
2. If it is not possible to schedule construction between September and January, preconstruction surveys for nesting birds shall be conducted by a qualified biologist to ensure that no active nests will be disturbed during Project implementation. A pre-construction survey shall be conducted no more than 14 days prior to the initiation of construction activities. During this survey, the qualified biologist shall inspect all potential nest substrates in and immediately adjacent to the impact areas for nests. If an active nest is found close enough to the construction area to be disturbed by these activities, the qualified biologist shall determine the extent of a



construction-free buffer to be established around the nest. If work cannot proceed without disturbing the nesting birds, work may need to be halted or redirected to other areas until nesting and fledging are completed or the nest has otherwise failed for non-construction related reasons.

Additional Project Components

Minor changes were made to the Project which included adding some additional improvements (pipelines, manholes, staging areas, and other related components). The new Project components will have ground disturbing activities similar to the Approved Project and will occur in the general vicinity of the areas covered under the Approved Project. It should be noted that none of the new Project components involve work within creeks, streambeds, lakes or other waterways and will not impact the existing regulatory permits required for the Project. The new work areas are depicted on Figures 1 through 3. The Approved Project components are shown on each figure and the new project components are depicted in yellow. These additional components, when combined with the Original Project, will result in the installation of approximately 0.6 miles of pipelines using cured-in-place methods and approximately 1.6 miles of open trench replacement pipelines. A total of 65 manholes will be installed, replaced, sealed or rehabilitated.



Figure 1 – Groveland Project Areas

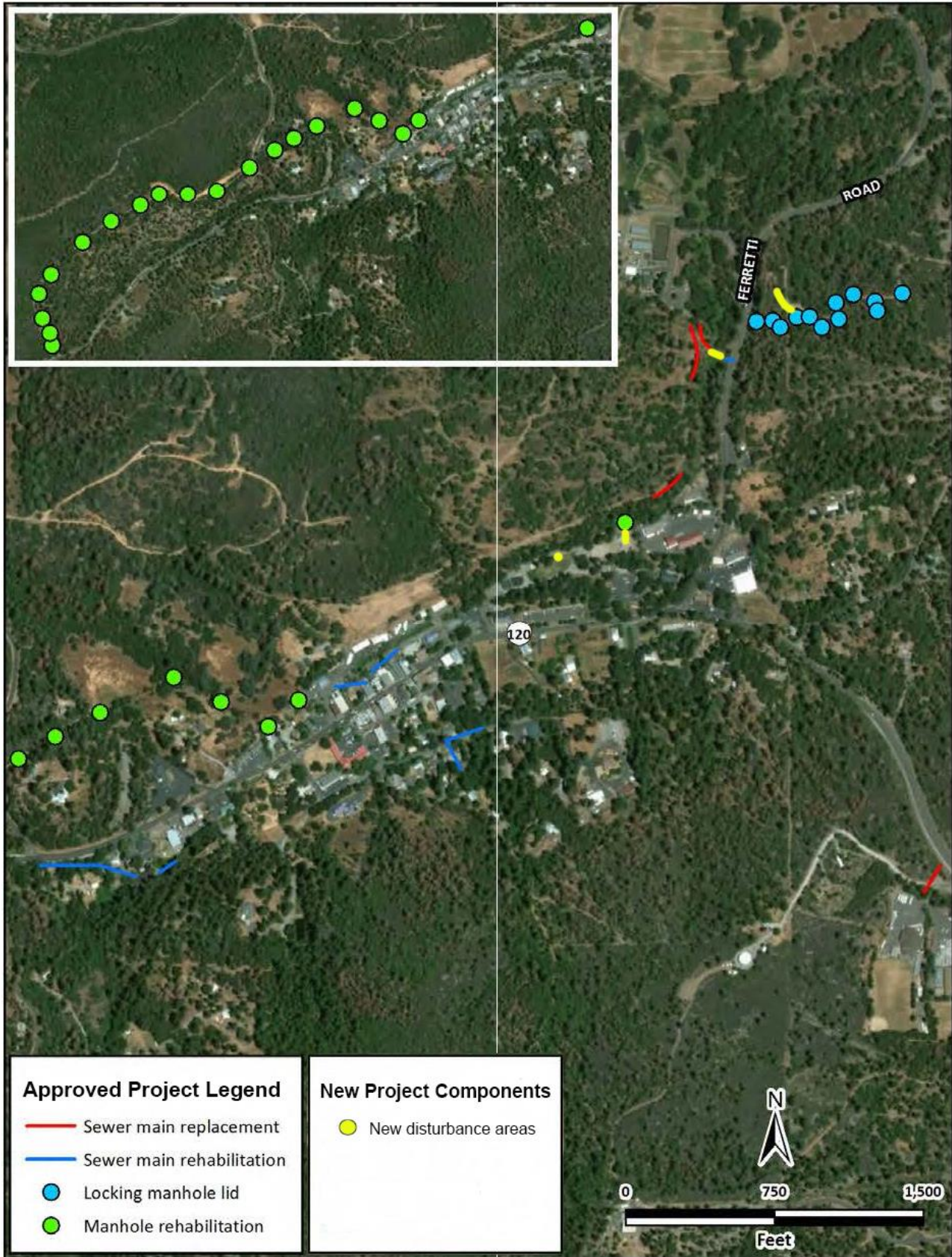


Figure 2 – Big Oak Flat Project Areas

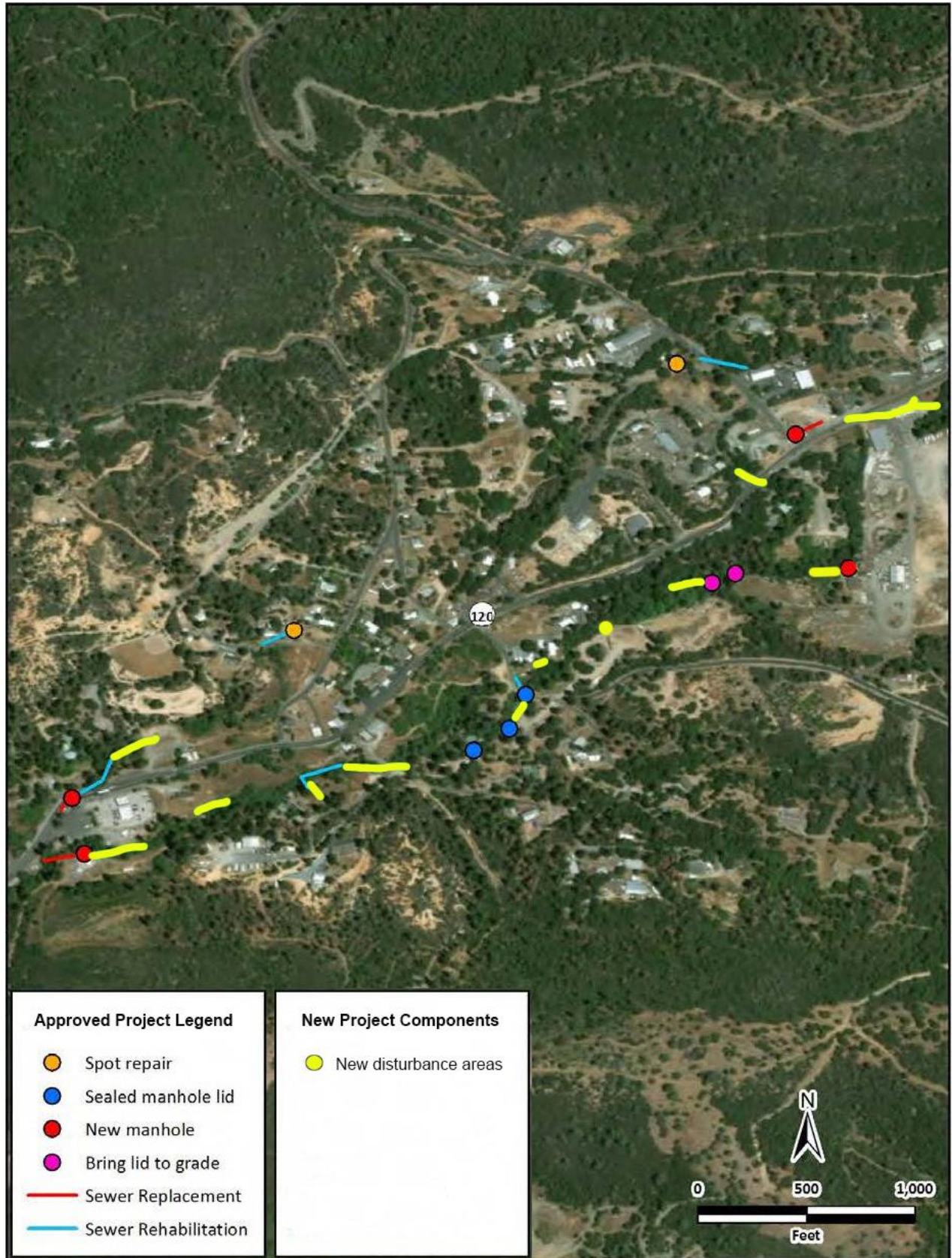
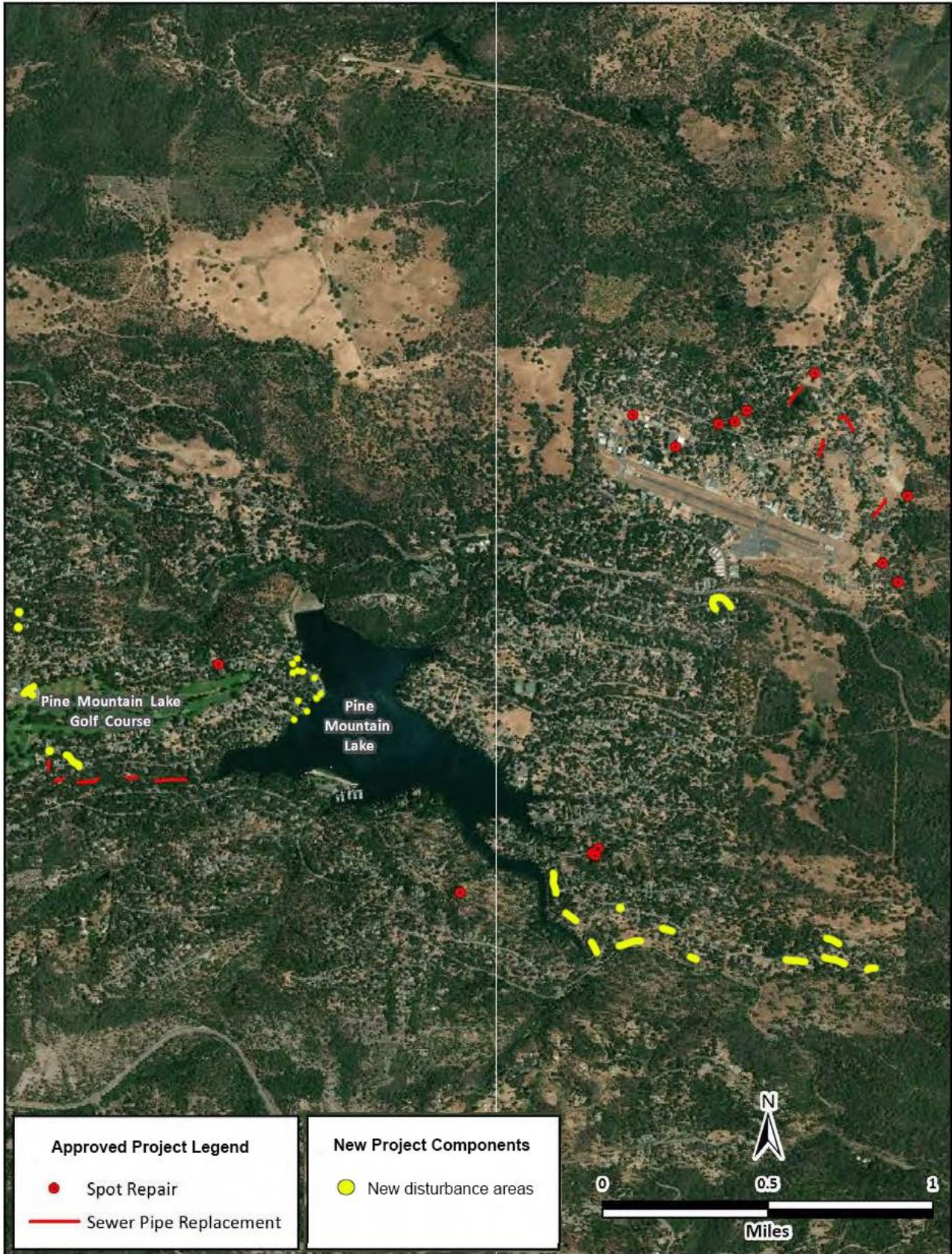


Figure 3 – Pine Mountain Lake



The new work areas depicted in Figures 1 through 3 will occur in areas similar to the Approved Project. As such, the mitigation measures applicable to the Approved Project are also applicable to the new project areas. For the new project areas, these don't include work within creeks, streambeds, lakes or other waterways, thus Mitigation Measures BIO – 2 and BIO – 4 are only applicable to the Approved Project. However, Mitigation Measures BIO – 1, BIO – 3 and BIO – 5 will be applicable to both the Approved Project and all of the new Project areas. The following biological mitigation measures will be implemented as a condition of project approval for the new Project areas:

Mitigation Measures:

BIO-1: Protect nesting bald eagle.

1. To the extent practicable, construction shall be scheduled to avoid the nesting season, which extends from February through July.
2. If it is not possible to schedule construction between August and January, preconstruction surveys for nesting bald eagles shall be conducted by a qualified biologist to ensure that no active nests will be disturbed during Project implementation. A pre-construction survey shall be conducted no more than 14 days prior to the initiation of construction activities. During this survey, the qualified biologist shall inspect all potential nest substrates (large trees) within 0.5-miles of the impact areas in Pine Mountain Lake for nests. If an active nest is found close enough to the construction area to be disturbed by Project activities, the qualified biologist in consultation with the CDFW shall determine the extent of a construction-free buffer to be established around the nest. If work cannot proceed without disturbing the nesting eagles, work may need to be halted or redirected to other areas until nesting and fledging are completed or the nest has otherwise failed for non-construction related reasons.

BIO-3: Protect western red bat.

1. To the extent practicable, construction shall be scheduled to avoid the birthing and pupping season for western red bat, which extends from May through August.
2. If it is not possible to schedule construction between September and April, preconstruction surveys for roosting bats shall be conducted by a qualified biologist to ensure that no active maternal colonies will be disturbed during Project implementation. A pre-construction survey shall be conducted no more than 14 days



prior to the initiation of construction activities. During this survey, the qualified biologist shall inspect all potential colony substrates in and immediately adjacent to the impact areas for maternity roosts. If an active maternity roost is found close enough to the construction area to be disturbed by work activities, the qualified biologist shall determine the extent of a construction-free buffer to be established around the colony. If work cannot proceed without disturbing the colony, work may need to be halted or redirected to other areas until young are able to fly or the colony has otherwise failed for non-construction related reasons.

BIO-5: Protect nesting birds.

1. To the extent practicable, construction shall be scheduled to avoid the nesting season, which extends from February through August.
2. If it is not possible to schedule construction between September and January, preconstruction surveys for nesting birds shall be conducted by a qualified biologist to ensure that no active nests will be disturbed during Project implementation. A pre-construction survey shall be conducted no more than 14 days prior to the initiation of construction activities. During this survey, the qualified biologist shall inspect all potential nest substrates in and immediately adjacent to the impact areas for nests. If an active nest is found close enough to the construction area to be disturbed by these activities, the qualified biologist shall determine the extent of a construction-free buffer to be established around the nest. If work cannot proceed without disturbing the nesting birds, work may need to be halted or redirected to other areas until nesting and fledging are completed or the nest has otherwise failed for non-construction related reasons.

Implementation of the above measures will reduce potential Project impacts to a less than significant level and will ensure that the Project is in compliance with state and federal laws protecting these species.



Attachment B

Cultural Resources Survey and
Supplemental Report (Confidential)

(Confidential - Under Separate Cover)

The **Cultural Resources Survey and Supplemental Report** identifies the location of cultural resources within the vicinity of Downtown Groveland, Big Oak Flat and Pine Mountain Lake, Tuolumne County, California. Information regarding cultural resources, including site locations, is protected by both federal and state laws. Federal regulations include, and are not limited to, Section 304 of the National Historic Preservation Act (54 United States Code [U.S.C.] 307103) and the Archaeological Resources Protection Act (16 U.S.C. Section 470h). State regulations include, and are not limited to, Government Code Section 6250 et seq. and Section 6254 et seq. Disclosure of site locations to individuals other than those who meet the U.S. Secretary of Interior's Professional Standards, the California State Personnel Board criterion for Associate State Archaeologist, or State Historian II is a violation of the California Office of Historic Preservation records access policy.