

Operations and Maintenance Report August 2023

Operations Department

Wastewater Treatment Division

Influent Totals	
Total	3.86
Average	0.13
High	0.16
Low	0.07

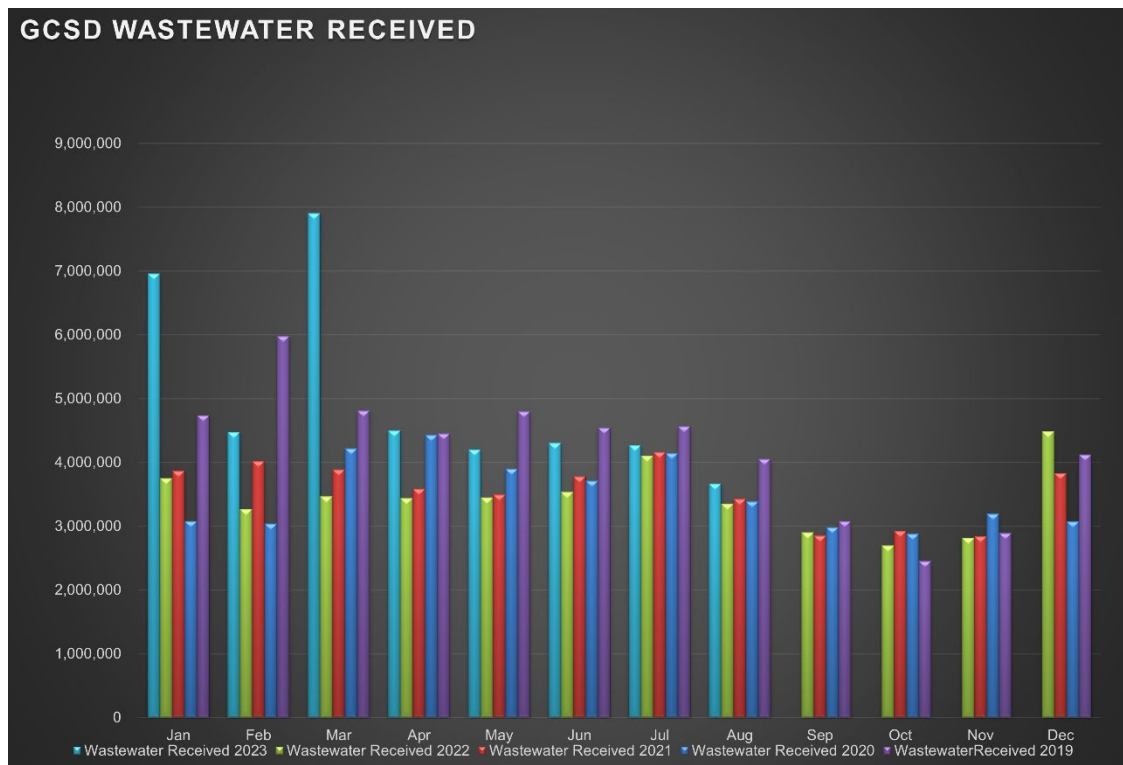
Effluent Totals	
Total	3.81
Average	0.12
High	0.16
Low	0.07

Reclamation Totals	
PML	
Spray Fields	
PML Season Total	
Spray Field Season Total	

Wasting Totals	
Total Inches	129
Total Pounds	2164
Active Accounts	1567

STP Rainfall Totals by Year During Current Month (Inches)					
Season	2023	2022	2021	2020	2019
1.10	1.10	0.12	0.00	0.01	0.00
	High 0.48	High 0.12	High 0.00	High 0.01	High 0.00

Charted Historical Monthly Influent Totals



Wastewater Treatment Division

Routine Tasks

- Took weekly Bac-Ts and BOD of the Chlorine Contact Chamber (CCC) and sent into Alpha Lab for testing.
- Completed monthly Wastewater Report and sent to the State Water Resources Control Board
- Completed daily rounds and Lab.

Water Treatment Division

Routine Tasks

- Submitted monthly Water Treatment Report to State Water Resources Control Board
- Submitted monthly Conservation Report to State Water Boards
- Performed weekly checks and calibrations on all analyzers at 2G, BC, and AWS
- Performed monthly UV calibrations at 2G and BC.
- Took weekly Treatment Plant samples and sent them into Alpha Lab
- Monitored/sampled Distribution Tanks as needed.

Maintenance Department

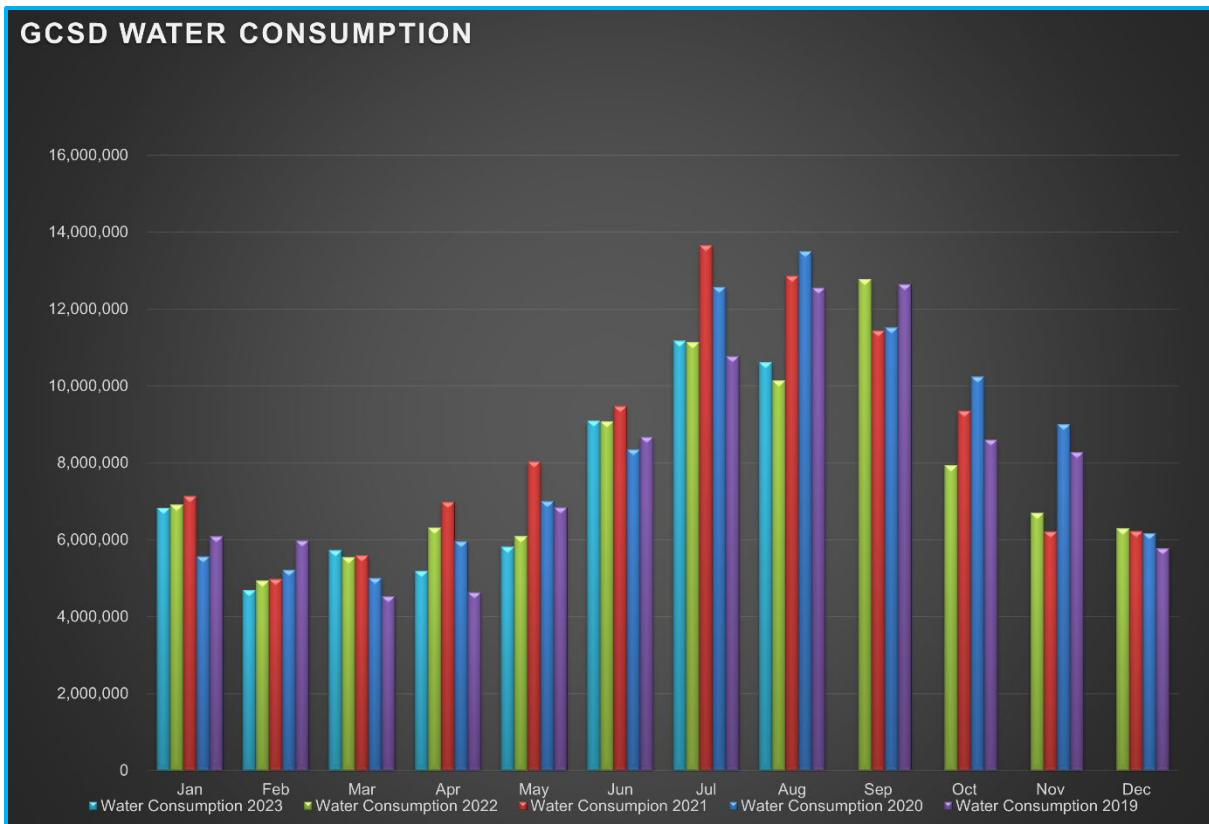
Water Distribution System Division

Meter Related Services	Total
Check / Repair Meters	7
Water Meters Installed	4
Monthly Meter Restrictions	0
Meter Lock offs	16
Meter Changeouts	3
Tenant Final Reads	3
Re-Reads	26
Meter Turn-Offs	2
Meter Turn-Ons	15
Meter Tests	0
Winterize Meter	0
Color/Taste/Odor Complaints	2
Total Meter Related Issues	78

Billed Consumption (Gallons)	2023	2022	2021
Residential	9,806,619	9,376,310	11,953,746
Commercial	815,038	770,617	950,196
Total	10,621,657	10,146,927	12,903,942

Active Accounts	3276
------------------------	------

Charted Historical Monthly Water Consumption



Maintenance and Repair Data

Description	Total
Water Main Leaks / Repairs	1
Water Service Line Leaks / Repairs	2
Fire Hydrant Repairs / Replacements	1
Number of Hydrants Flushed	5
Number of Dead-Ends Flushed	0
Water Valves Exercised	2
GIS Points	0

Description	Gallons
Flushing for Water Quality	157,113
Water Loss Due to Leaks / Breaks	300

After-Hours Calls (Hours)				
Water	Sewer	Park	Other	Total
9	28	4	1	42

Maintenance and Repair

- **Routine Tasks**
 - Read all District Water Meters
 - Customer Service Calls (Low / High Pressures, No Water, Turn-Ons / Turn-Offs, Etc.)
 - Underground Service Alert (USA) Utility Marking Program
 - Weekly Pump Station Inspections at Tank 2, Tank 4, Tank 5 (Buildings, Tanks, Motors, Pumps, Drives, Communications, Generators, and Auxiliary Equipment)
 - Lock offs for non-payment.

- **Tanks and Pump Stations**
 - Clean up at Butler bypass pump station.

- **Distribution System**
 - Water Distribution System Flushing
 - Water Meter Testing
 - Repair leaking water service line at 12619 Mount Jefferson St.
 - Repair leaking water service line at 20060 Lower Skyridge Dr.
 - Abandon water service line at PML main entrance island.
 - R&R meter washers at 12903 Hondo Ct and 19676 Jonny Degnan Ct.
 - Clean meter box of dirt, debris, and vegetation at 18543 Main St.
 - Water service line upgrade at U5/L189.
 - Water flushing on Upper Skyridge after reconnection of water main. (CIP Project.)

Water Service Line Repair – Lower Skyridge Dr



Wastewater Collection System Division

Description	Total
Manholes Inspected	22
GIS Points	0
Customer Complaint	8
Odor Complaints	1

Description	Total
Flushing/Jetting (Feet)	760
Video Inspection (Feet)	425

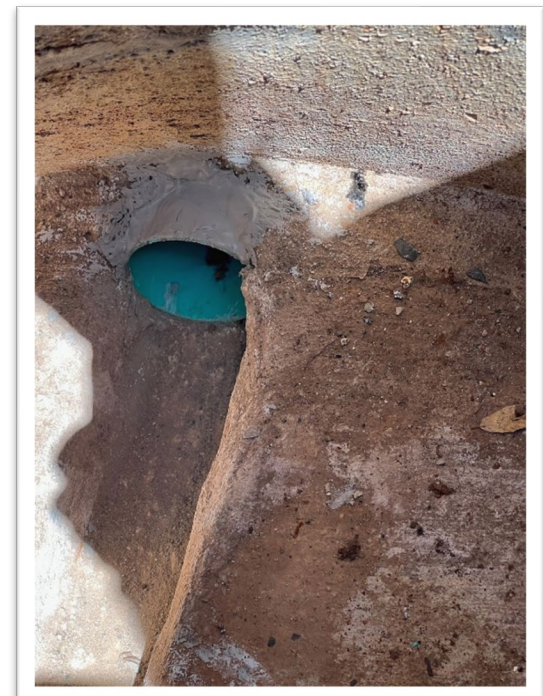
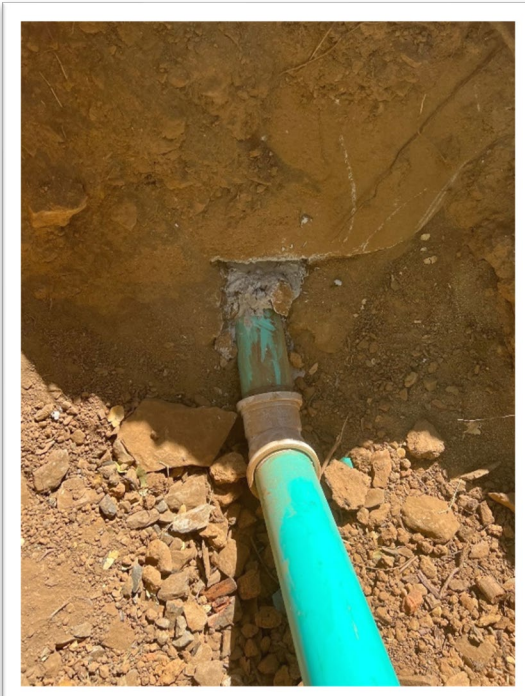
Description	Total
Sanitary Sewer Spills (SSO)	0
SSO Gallons Spilled	0

Maintenance and Repair

- **Routine Tasks**
 - Weekly lift station site inspections (PMCS)
 - Added degreaser and odor control to lift stations.
- **Lift Stations**
 - Cleaned and Inspected: LS5, LS6, LS7, LS8, LS14
 - Manhole Inspections LS9, LS10, Groveland.
 - Rewired UPS at LS4 for stability.
 - Root removal at LS14.
 - Remove remaining winter storm logs and branches at LS11.
 - Reconfigured ARV plumbing at LS13. Recalibrated pressure transducer.
 - Repair check valves at LS16.
- **Collection System**
 - Flushed/Jetted gravity sewer line areas.
 - Groveland, Bass Pond, Twin Pines Easement monthly manhole inspections.
 - Sewer later excavation and inspection for I&I at 13301 Clements Rd.
 - Haul 84 yards of fill dirt to Unit 12 for CIP project.
 - Odor complaint at U15/L86.
 - Repair and upgrade sewer connection at 20244 Lower Skyridge Dr.

Pictures

New sewer install – Repairing damaged sewer lateral caused by homeowners contractor



General Maintenance Division

Maintenance By Department

- **Operations Department**

- 2G Water Treatment Plant
 - Exercise generator.
 - Clean and exercise ARV's.
 - Greased booster pumps and motors.
- Big Creek Water Treatment Plant
 - Exercise generator.
 - R&R Flow Meter, calibrate, and check for leaks.
 - R&R chlorine contact tank sample pump.
- AWS
 - Landscaping/cleanup at Dunn Ct.
- STP
 - Recalibrate VFD's.
 -

- **Maintenance Department**

- Equipment
 - Shop tool maintenance and cleaning.
 - Monthly Inspect and run at operating temperatures...
 - Rain for Rent, Sullair, Vactron, Cement mixer, Light Tower, STP generator, Dunn Ct Generator, AWS Generator, Standby Generator, Highlands Generator.

Vehicles

- 70087: 90 Day Inspection. Repaired broken grab handle.
 - 70981: 90 Day Inspection. Lube, oil, filters. Order tires and brake rotors.
 - 79783: 90 Day Inspection.
 - 70986: Diagnose and repair "Code 3" lights.
 - 52229: Lube, Oil, Filters.
 - 62330: 90 Day Inspection.
 - 62333/12210: 90 Day Inspection
 - 41821: Clean and inspect.
 - 40403: Fluid, belts, and brake Inspection.
 - 60523: 90 Day Inspection
 - 31630: Lube, oil, filters. Cleaned battery and connections and reinstalled.
 - Surplus Vehicles: Remove district equipment and decals.
- Buildings & Yard
 - General yard cleanliness.
 - Vegetation management.

Parks Division

Maintenance and Repair

- **Mary Laveroni Community Park**
 - Landscape Maintenance
 - Movies in the park.
 - Daily trash and bathroom maintenance

- **Ballfield & Dog Park**
 - Remove dead limbs from trees in dog park.

Contracted Work

- Moyle Excavation
 - Sewer Mainline replacement – Unit 12
 - Asphalt patch replacements.
- Potable Divers, Inc
 - Tank Inspections
 - Water Tank 3
 - Water Tank 4
 - Big Creek Water treatment Plant ad Chlorine Contact Tank

Workplace Safety and Training

- Routine Safety Meetings
 - Daily Tailgate Meetings
 - Weekly Safety Meetings
 - Weekly Security Checks
 - Weekly Vehicle Inspection

And Finally, A Little Team Building!

San Francisco Giants vs. Oakland A's – August 5th, 2023

