



Information Provided By

O&M Manager: Luis Melchor
 Operations Supervisor: Greg Dunn
 Maintenance Supervisor: Andrew Klein
 Administration Services Technician: Rachel Pearlman

**Operations and Maintenance Report
 March 2023**

Operations Department

Wastewater Treatment Division

Influent Totals	
Total	7.91
Average	0.26
High	0.47
Low	0.12

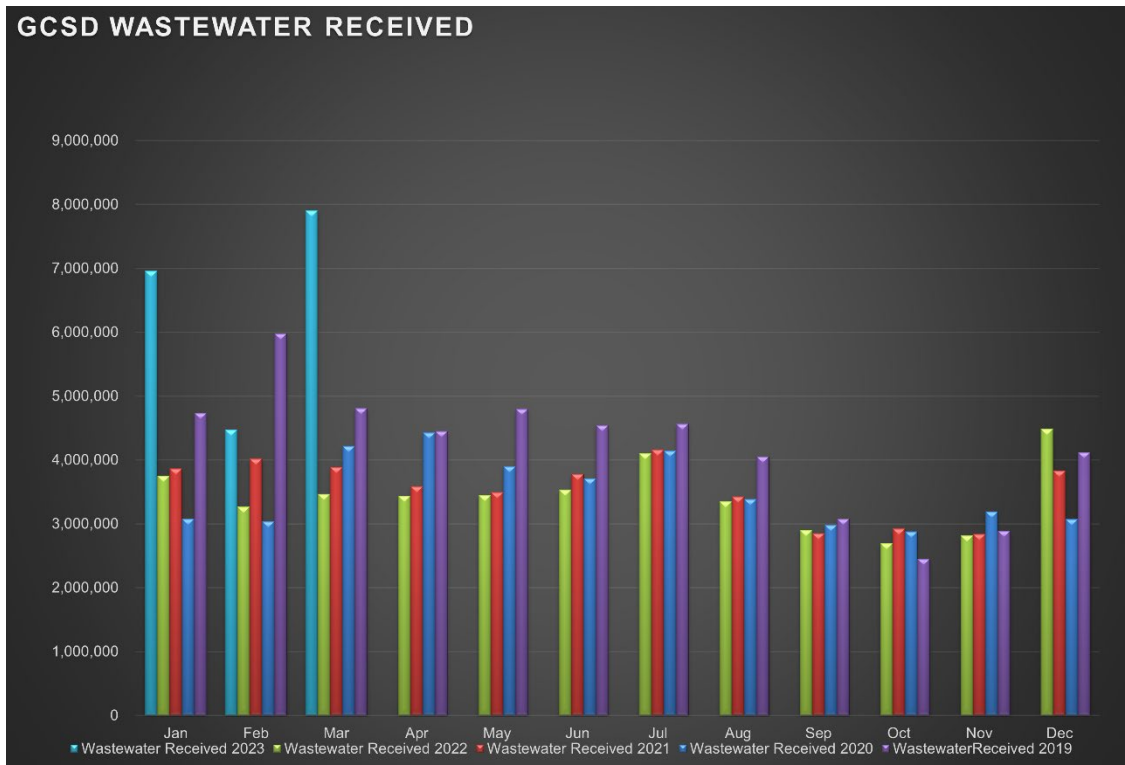
Effluent Totals	
Total	8.33
Average	0.27
High	0.50
Low	0.11

Reclamation Totals	
PML	
Spray Fields	
PML Season Total	
Spray Field Season Total	

Wasting Totals	
Total Inches	140
Total Pounds	3190
Active Accounts	1565

STP Rainfall Totals by Year During Current Month (Inches)					
Season	2023	2022	2021	2020	2019
	68.69	15.91	1.11	3.00	8.33
	High 2.80	High 0.33	High 1.10	High 2.08	High 1.20

Charted Historical Monthly Influent Totals



Wastewater Treatment Division

Routine Tasks

- Took weekly Bac-Ts and BOD of the Chlorine Contact Chamber (CCC) and sent into Alpha Lab for testing.
- Completed monthly Wastewater Report and sent to the State Water Resources Control Board
- Completed daily rounds and Lab.

Water Treatment Division

Routine Tasks

- Submitted monthly Water Treatment Report to State Water Resources Control Board
- Submitted monthly Conservation Report to State Water Boards
- Performed weekly checks and calibrations on all analyzers at 2G, BC, and AWS
- Performed monthly UV calibrations at 2G and BC.
- Took weekly Treatment Plant samples and sent them into Alpha Lab
- Monitored/sampled Distribution Tanks as needed.

Maintenance Department

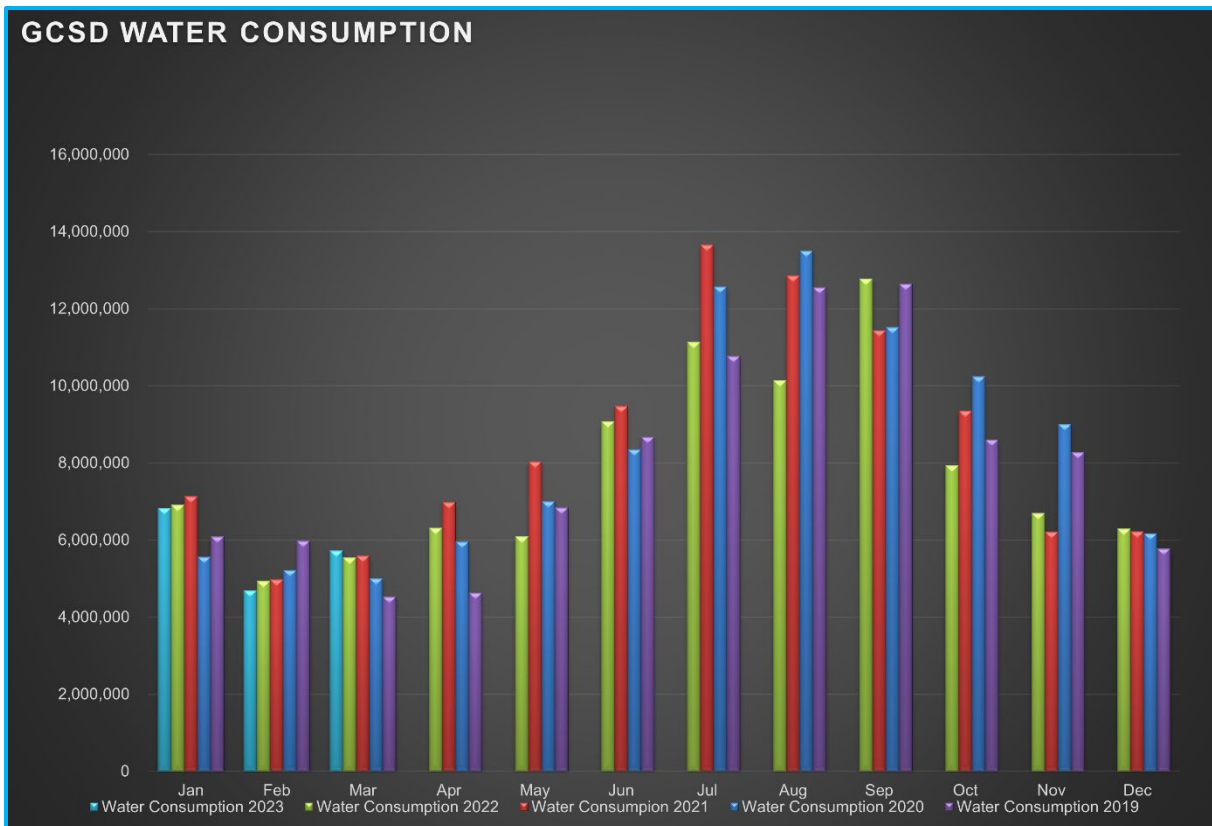
Water Distribution System Division

Meter Related Services	Total
Check / Repair Meters	4
Water Meters Installed	0
Monthly Meter Restrictions	0
Meter Lock offs	12
Meter Changeouts	0
Tenant Final Reads	1
Re-Reads	68
Meter Turn-Offs	5
Meter Turn-Ons	13
Meter Tests	1
Winterize Meter	1
Total Meter Related Issues	105

Billed Consumption (Gallons)	2023	2022	2021
Residential	5,370,717	5,235,153	5,272,841
Commercial	357,128	286,963	285,017
Total	5,727,845	5,522,116	5,557,858

Active Accounts	3265
------------------------	------

Charted Historical Monthly Water Consumption



Maintenance and Repair Data

Description	Total
Water Main Leaks / Repairs	1
Water Service Line Leaks / Repairs	1
Fire Hydrant Repairs / Replacements	0
Number of Hydrants Flushed	78
Number of Dead-Ends Flushed	19
Water Valves Exercised	1
GIS Points	0

Description	Gallons
Flushing for Water Quality	114,800
Water Loss Due to Leaks / Breaks	96,868

After-Hours Calls (Hours)				
Water	Sewer	Park	Other	Total
11	9	0	5	25

Maintenance and Repair

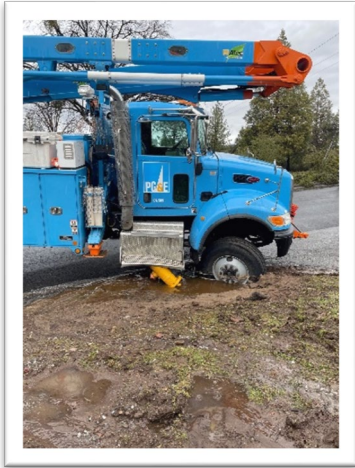
- **Routine Tasks**
 - Read all District Water Meters
 - Customer Service Calls (Low / High Pressures, No Water, Turn-Ons / Turn-Offs, Etc.)
 - Underground Service Alert (USA) Utility Marking Program
 - Weekly Pump Station Inspections at Tank 2, Tank 4, Tank 5 (Buildings, Tanks, Motors, Pumps, Drives, Communications, Generators, and Auxiliary Equipment)
 - Lock offs for non-payment.

- **Tanks and Pump Stations**
 - Reprogramming of air compressor setting to balance water level in pressure vessel at Tank 4.

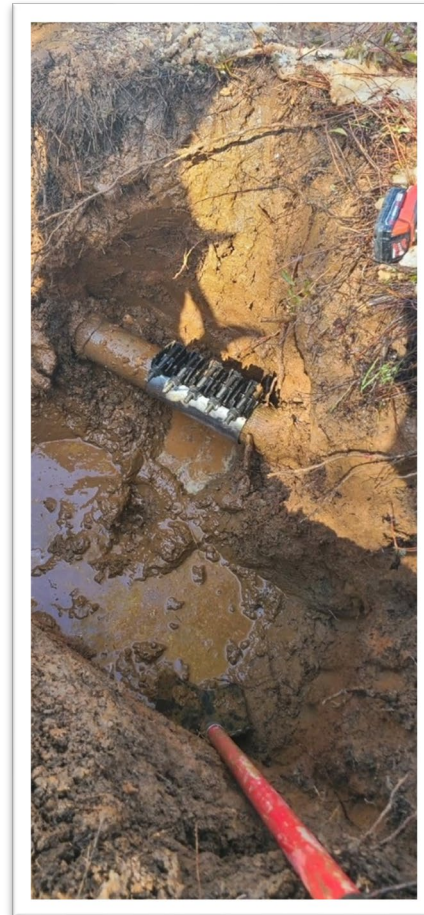
- **Distribution System**
 - Water Distribution System Flushing, Unit 12 after hydrant knockdown.
 - Water Distribution System Flushing, Routine
 - Meter box maintenance.

Pictures

Fire hydrant damaged during storm response.



Water Main Repair – Elder Ln



Wastewater Collection System Division

Description	Total
Manholes Inspected	123
GIS Points	0
Customer Complaint	2
Odor Complaints	0

Description	Total
Flushing/Jetting (Feet)	1750
Video Inspection (Feet)	479

Description	Total
Sanitary Sewer Spills (SSO)	0
SSO Gallons Spilled	0

Maintenance and Repair

- **Routine Tasks**
 - Weekly lift station site inspections (PMCS)
 - Added degreaser and odor control to lift stations.

- **Lift Stations**
 - Cleaned and Inspected: LS9, LS10, LS11, LS12
 - Lift Station 11 – Lube, Oil, and replace filters.
 - Lift Station 11 – Reconnect power connections, R&R battery charger and block heater after storm damage (tree) to electrical drop.

- **Collection System**
 - Flushed/Jetted gravity sewer line areas.
 - Groveland, Bass Pond, Twin Pines Easement Manhole inspections.

Pictures

Wastewater Treatment Plant Polymer Mixer Upgrade



Our old polymer mixer (left picture) was difficult to use and was an injury waiting to happen.

The operations team discussed their needs with Travis, and they came up with a design to reduce the manual handling of the heavy 55-gallon barrels.

Travis went to work and built a masterpiece (below). Now the barrels can be rolled into place with a dolly. The mixer uses a manual lever to raise up for cleaning and barrel changes.

This will make life so much easier and safer for the Operators.



Parks Division

Maintenance and Repair

- **Mary Laveroni Community Park**
 - Landscape Maintenance
 - Snow plowing and shoveling.
 - Tree work
 - Daily trash and bathroom maintenance
- **Ballfield & Dog Park**

General Maintenance Division

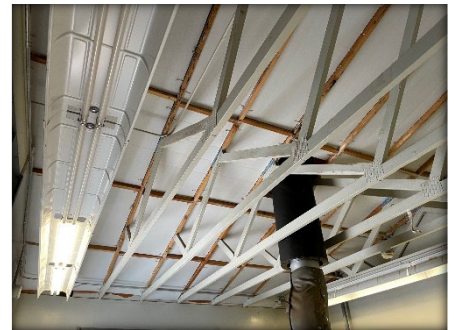
Maintenance By Department

- **Operations Department**
 - 2G Water Treatment Plant
 - Big Creek Water Treatment Plant
 - AWS
 - STP
 - Diagnose and repair blower VFD in headworks building.
 - Vacuum sump in aeration basin.
 - Repair damaged electrical pull box
 - Install new polymer mixer.
- **Maintenance Department**
 - Equipment
 - Monthly Inspect and run at operating temperatures...
 - Rain for Rent, Sullair, Vactron, Cement mixer, Light Tower, STP generator, Dunn Ct Generator, AWS Generator, Standby Generator, Highlands Generator.
 - Vehicles
 - 42128: Install toolboxes and rack. This is our new meter reading truck!
 - 30711: Lube, Oil, and change filters.
 - 70986: Diagnose and repair “electrical drain” issue.
 - 60523: Diagnose and repair “Boost Pressure” sensor
 - 70981: 90 Day Inspection
 - 82330: Repair water pump with MME Service Technician
 - Buildings & Yard
 - General yard cleanliness.
 - Vegetation management.
 - Remove tree (storm damage) from new fence around Reservoir 1.

Contracted Work

- Day Generator Service
 - Generator upgrades at LS1, LS2, LS7, LS8, LS9, LS13, Highlands PS, Big Creek TP, Second Garrote TP, and Admin. Continuing.
- Moyle Excavation
 - Sanitary Sewer Replacement CIP project continuing
- Potable Divers Inc.
 - Cleaning and Inspection 2G Clearwell and Chlorine Contact Tank
 - Cleaning and Inspection Tank 1
 - Cleaning and Inspection Tank 2
- Coldani Insulation
 - Ceiling Insulation at 2G WTP

Workplace Safety and Training



- Routine Safety Meetings
 - Daily Tailgate Meetings
 - Weekly Safety Meetings
 - Weekly Security Checks
 - Weekly Vehicle Inspection