



Groveland Community Services District Fire Department / CALFIRE

18966 Ferretti Road Groveland, CA 95321



Staff Report
June 1, 2024

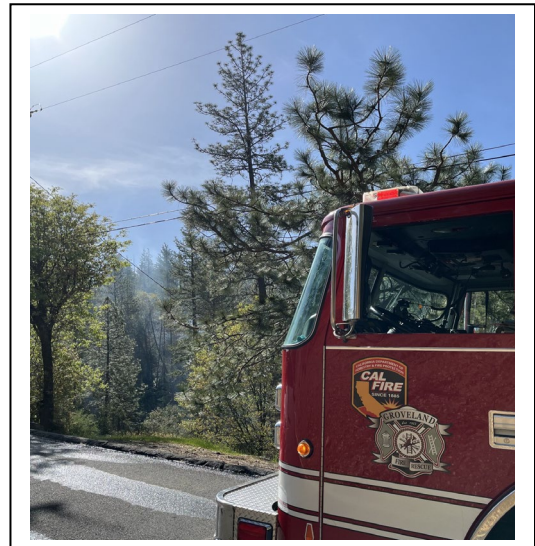
To: Board of Directors

From: Andy Murphy, Assistant Chief
By: Travis Chunn, Fire Captain

Subject: Monthly Activity Report – May 1, 2024 – May 31, 2024

Operations:

On May 2nd, at approximately 7:18 AM, GCSD Engine 781 joined forces with Tuolumne County Engine 631 and additional resources in response to a vegetation fire located on McKinley inside of PML. Initial reports indicated the fire spanned an area of 2-3 acres, prompting swift action from the dispatched units. Through collaborative efforts and coordinated teamwork, responders effectively contained the fire and halted its forward progress in a timely manner. Despite the challenging conditions posed by the vegetation fire, the combined efforts of all involved ensured a rapid and successful mitigation of the incident.





Groveland Community Services District Fire Department / CALFIRE

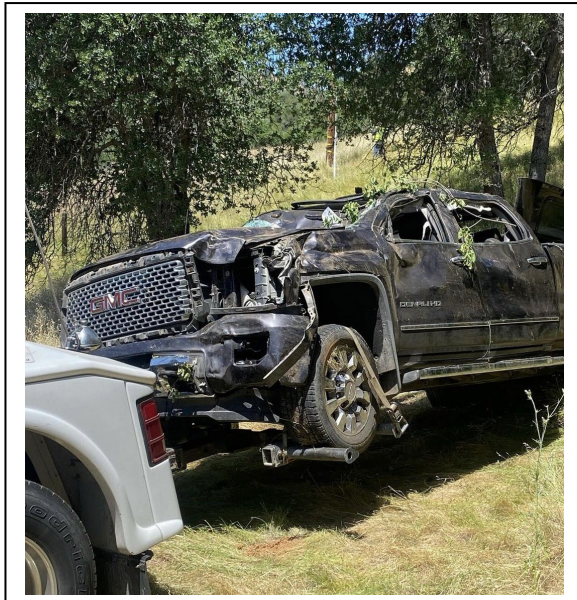
18966 Ferretti Road Groveland, CA 95321



Operations:



On May 23rd, at approximately 9:24 AM, GCSD Engine 781 was dispatched alongside Tuolumne County Engine 631 and other resources to respond to a vehicle accident involving downed power lines and a small vegetation fire, measuring under half an acre. Fire personnel swiftly initiated their response, prioritizing the safety of the individuals involved in the accident. Despite the challenging terrain, with the vehicle located over 100 feet down a steep bank. Through effective coordination and rapid action, fire personnel successfully managed to bring the situation under control, demonstrating professionalism and dedication to the incident.





Groveland Community Services District Fire Department / CALFIRE

18966 Ferretti Road Groveland, CA 95321



Operations:

On May 29th, at approximately 1:06 PM, GCSO Engine 781 and TCFD E-631 were dispatched to a head-on vehicle accident on Highway 120 near Smith Station Road. E-631 reported three immediate patients, one of whom was pinned in the vehicle. The Incident Commander quickly assessed the situation and deployed Jaws of Life to extricate the trapped patient, while additional ambulances were requested, along with multiple air ambulances to transport the injured. Despite the efforts of the responders, tragically, one person succumbed to injuries.



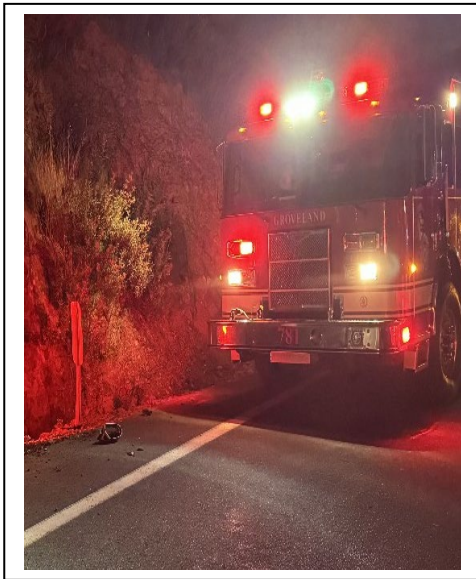


Groveland Community Services District Fire Department / CALFIRE

18966 Ferretti Road Groveland, CA 95321

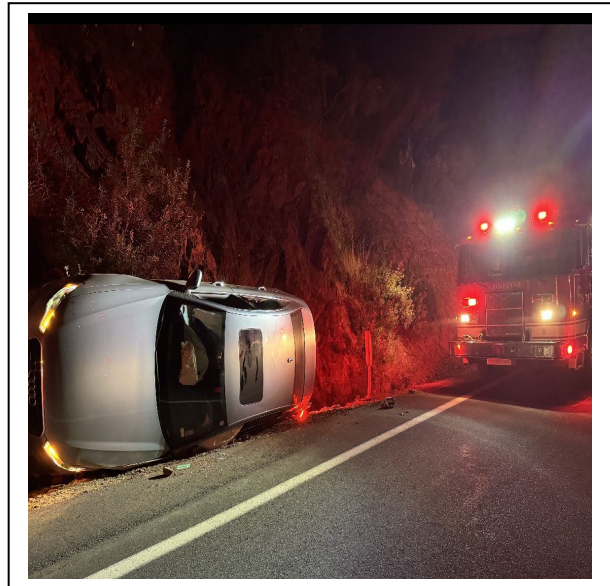


Operations:



On May 30th, 2024, at approximately 4:20 AM, Engine 781 was dispatched to respond to a single vehicle overturned incident involving a head-on collision on Highway 120. The incident location was specified as, "Highway 120, halfway down New Priest Grade." Engine 781 swiftly assumed leadership responsibilities, with the Incident Commander orchestrating a well-coordinated response effort. With professionalism at the forefront, the Incident Commander conducted a thorough assessment of the scene upon arrival, swiftly identifying the critical needs of the situation. Clear and concise communication channels were established, ensuring seamless coordination among all responding units and agencies involved in the operation.

As the Incident Commander prioritized the safety of both responders and victims, implementing strategic measures to mitigate risks and hazards present at the scene. Through decisive decision-making and effective delegation of tasks, the Incident Commander ensured that resources were efficiently utilized to provide prompt medical care and extrication services to the individuals involved in the accident





Groveland Community Services District
Fire Department / CALFIRE
18966 Ferretti Road Groveland, CA 95321



Apparatus and Equipment:

Apparatus	Description	Status
Engine 781	2009 Pierce Contender	In Service
Engine 787	2000 Freightliner FL112	In Service
Engine 783	1997 International Model 15	In Service
Utility 786	2008 Chevrolet 2500	In Service

Training:

In addition to our monthly Emergency Medical Technician (EMT) curriculum and engine company performance standards, Battalion personnel received the following specialized training:

- FAE Rene Herrera- attended Cal Fire Training Center for Common Passenger Vehicle Extrication, which is part of his Joint Apprenticeship Committee class in San Luis Obispo, CA.
- FAE Santiago Martinez- attended Cal Fire Training Center for Common Passenger Vehicle Extrication in San Luis Obispo, Hazmat Incident Commander at Ben Clark Training Center, and ICS 300/400 at South Ops. Training Center in Riverside. These classes are part of his Joint Apprenticeship Committee training.
- Hose Evolutions
- Extrication
- Patient Packaging
- **AED & Lucas Device- All AED's were serviced and tested**
- **A NEW AED WAS ORDERED FOR ENGINE 781**



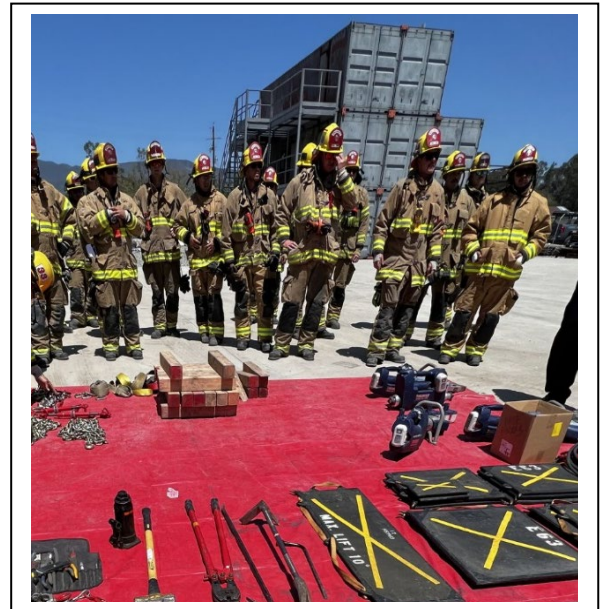
Groveland Community Services District Fire Department / CALFIRE

18966 Ferretti Road Groveland, CA 95321



Training:

During the month of May, several members of our team participated in a Common Passenger Vehicle Extrication Course conducted by the San Luis Obispo Cal Fire Unit. This intensive training program covered a wide range of essential skills, including Vehicle Stabilization, Airbags, Partech Struts, Rescue 42's, and Cribbing techniques. Moreover, participants engaged in diverse scenario-based exercises, assuming various roles such as Incident Commander, Operations, Rigging lead, and medical assistance to patients. This comprehensive training equipped our personnel with advanced competencies vital for effective emergency response and rescue operations.





Groveland Community Services District Fire Department / CALFIRE

18966 Ferretti Road Groveland, CA 95321



Training:

During May, Training continued at PML Airport with GCSD Engine 781 and Tuolumne County Engine 631 engaged in first-in drills, focusing on essential aspects such as hydrant changeovers, Incident Commander role establishment, and resource allocation. These drills not only prepare individuals for the demands of firefighting but also contribute to their personal and professional growth.





Groveland Community Services District Fire Department / CAL FIRE

18966 Ferretti Road Groveland, CA 95321



Fire Department News:

GCSO Station recently acquired an Electric Vehicle Emergency Plug, a cutting-edge tool designed to enhance the safety and efficiency of emergency responses. This innovative device empowers emergency personnel by granting them control over crucial vehicle power functions, enabling them to swiftly and safely deactivate essential electronics as needed. Upon connection to the vehicle's charging port, the plug seamlessly initiates a simulated charging process while also executing pivotal actions such as shifting the vehicle into "Park" mode and engaging the electric parking brake. Such capabilities are invaluable in emergency situations, particularly during traffic collisions, where they serve to mitigate the risk of safety malfunctions and streamline response efforts. The acquisition of this Electric Vehicle Emergency Plug underscores GCSO Station's unwavering commitment to equipping its first responders with state-of-the-art tools and technologies to effectively serve and protect the community.



May-24

STATION 78

Alarm Sounding	2
Odor Investigation	0
Debris Fire	0
Medical Aid	22
Fire Menace Standby	1
Fire Other	0
Haz Mat	0
Landing Zone	1
Plane/Heli Crash	0
Public Assist	1
Smoke Check	1
Structure Fire	0
Commercial Structure Fire	0
Vegetation Fire	0
Vehicle Accident	3
Vehicle Accident/Pin in	0
Vehicle Fire	0
TOTAL	31



Auto Aid	Given
Tuolumne County	3
INC# 6449 Vehicle Accident New Priest Grade INC# 6736 Vehicle Accident Highway 120 INC# 6759 Vehicle Accident Highway 120 TCFD E-631: 23 CALLS	

ALS	
Yes	No
16	6

Last Call Logged Run # 6867

