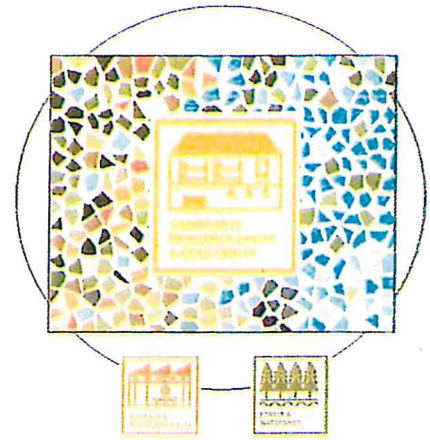


NDRC Community Resilience Center Project



To: Operational Stakeholders Advisory Committee Member

From: *Ma*
Maureen Frank, Deputy County Administrator

Subject: Participation on the NDRC Community Resilience Center Operational Stakeholders Advisory Committee

As you may know Tuolumne County, in partnership with the State of California, applied for and was awarded Natural Disaster Resiliency Competition (NDRC) grant funding of nearly \$70 million as a result of impacts to our community from the Rim Fire. This grant funding has been divided into three pillars:

- **Forest and Watershed Health** (\$28,604,459)—Lead Agency: Sierra Nevada Conservancy
- **BioMass Facility and Wood Products Campus** (\$22,000,000)—Lead Agency: Sierra Nevada Conservancy
- **Community Resilience Center(s)** (\$19,261,125)—Lead Agency: Tuolumne County

The County has been given the opportunity to lead the effort in designing and building one or two Community Resilience Centers. In developing the Community Resilience Center(s), the Board of Supervisors recognizes that it is crucial to have a process in place for receiving public input that is inclusive yet streamlined, while ensuring all segments of our community have a voice. To this end, the Board established a multi-layer organizational structure that includes the following: Advisory Team, Community Stakeholder Advisory Committee, Operational Stakeholder Advisory Committee and the Community at-Large.

The Community Resilience Center(s) will be the first of their kind and will be modeled after a community center while also maintaining flexibility for emergency and disaster preparedness capabilities. For these reasons, this project must be shaped by the community. Lionakis is the architectural firm that has been hired to design the building(s) as well as to lead the community engagement process.

County staff is requesting a representative from your organization serve on the Operational Stakeholder Advisory Committee (Community Resilience Center Organizational Structure Chart

is attached). We would appreciate your participation at the next meeting on **Thursday, October 5th from 1:30 – 4:00p.m. in the Board of Supervisors Chambers (2 South Green Street, 4th Floor)**. During that meeting we will be continuing the discussion with the staff from Lionakis Architects regarding the definition of a Community Resilience Center and begin the discussion of possible programs and services that could be served out of this facility. In advance, thank you for your participation in this project.

Feel free to contact me at mfrank@co.tuolumne.ca.us or 533-5511 if you have any further questions about NDRC or the Stakeholder Advisory Committee.

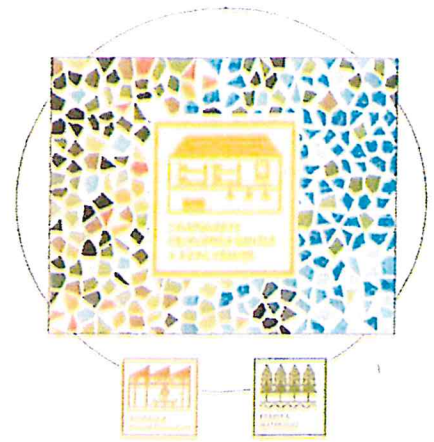
Attachment

- Community Resilience Center Organizational Structure Chart
- Public Meeting Schedule

c. NDRC Advisory Committee

Mike Davey, Lionakis Architects

NDRC Community Resilience Center Project



Organizational Structure

In developing a proposed organizational structure, County staff had the following goals in mind:

- Create a structure that is both streamlined and inclusive
- Ensure all segments of our community have a voice in the process
- Complete the project on time and within budget

The resulting structure called for several teams and committees (see attached chart). Each will have a unique role in the creation and development of this project.

Advisory Team

The Advisory Team is designed to provide high level oversight and guidance to the project. This team will also serve as a general sounding board for me as Project Lead for the County. It is recommended that the following people serve on this team:

- Maureen Frank, Deputy CAO (County NDRC Project Lead)
- Liz Peterson, Administrative Analyst
- Larry Cope, TCEDA Executive Director
- David Gonzalves, CRA Director
- NDRC-CDBG-DR Consultant

Community Stakeholder Advisory Committee

Members of this Committee are intended to either represent: 1) the geographic areas being considered for construction of a Resiliency Center; or 2) agencies that provide or assist in the provision of services throughout the County. It would be the responsibility of this group to ensure that the services and programs wanted by the community are communicated to the Architect and the Advisory Team. It is recommended that a representative from each of the following serve on this Committee:

- Groveland Area Representative
- Tuolumne Area Representative
- Superintendent of Schools
- ATCAA
- Area 12 Agency on Aging
- Tuolumne County Chamber of Commerce

- Sonora Area Foundation

Operational Stakeholders Advisory Committee

This Committee would consist of representatives from various agencies that might partner in providing services and programs at the Community Resiliency Center(s). Those to be invited to participate would include, but not be limited to the following:

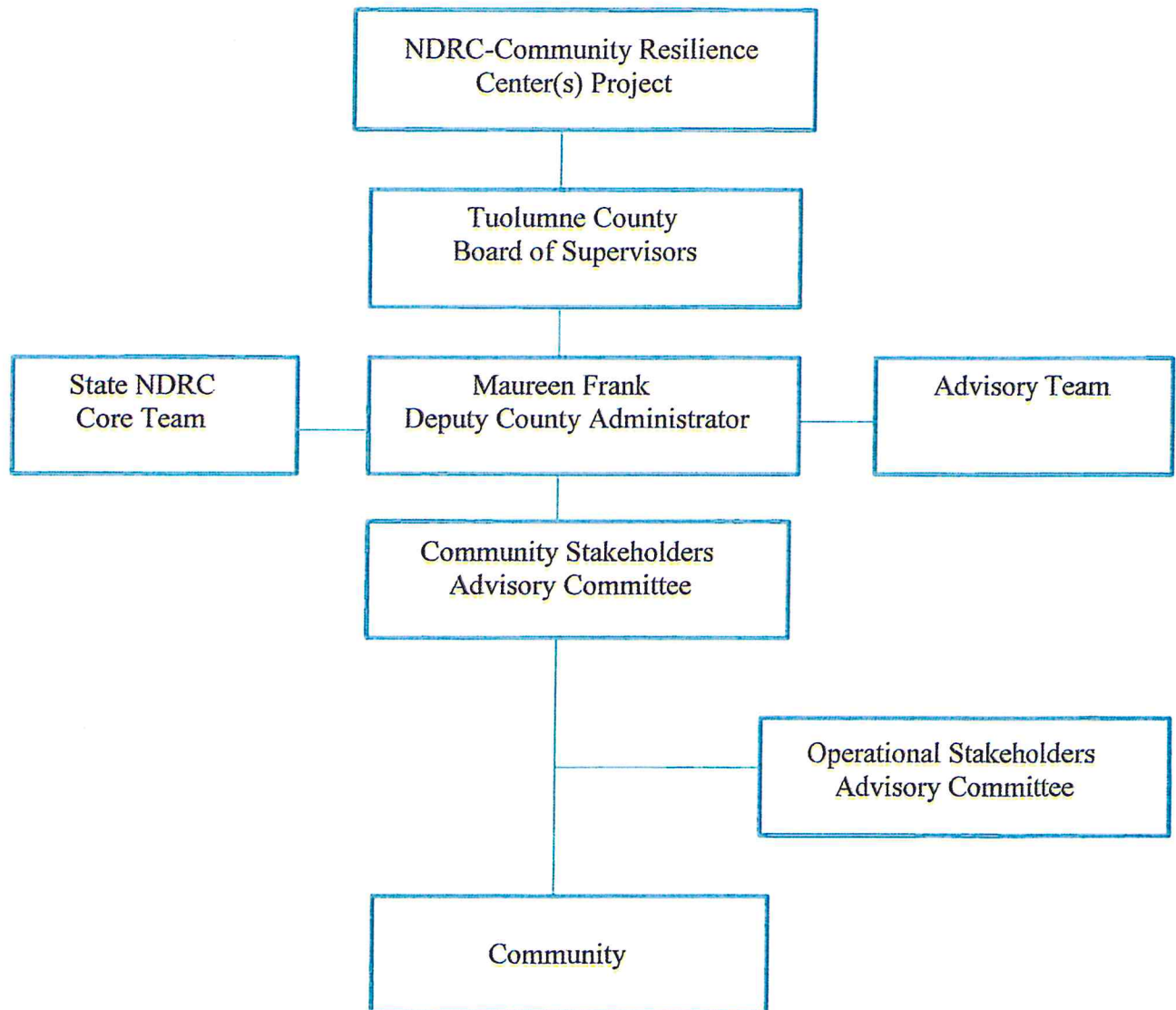
- American Red Cross
- ATCCA
- Columbia College
- First 5 Commission
- Groveland Community Service District
- Highway 120 Chamber
- Me-Wuk Tribal Council
- Mother Lode Job Training
- Sonora Adventist Health
- Southside Senior Services
- Tuolumne County Transportation Council
- Tuolumne Park and Recreation District
- Twain Harte Community Service District
- Adventist Health Home Health Care

Input from this group would be directed through the Community Stakeholder Advisory Committee.

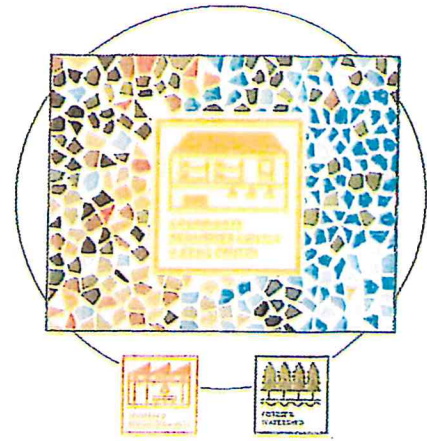
Community At-Large

The most important group of all is the community. It is vital that we hear from the community on what should be included in a Community Resiliency Center and how it should be utilized. Through a robust public engagement process, we plan to listen to what the community wants in a Resiliency Center and then work with the Community and Operational Stakeholders to see what type of partnerships could be formed in development of services and programs for the Center(s). The County plans on having public meetings in Groveland, Tuolumne and Sonora.

Community Resilience Center(s) Organizational Structure



**NDRC Community
Resilience Center Project
Tuolumne County**



Public Meeting Schedule

Community Stakeholder Advisory Meeting

Date: September 20, 2017

Time: 1:30p.m. – 4:00p.m.

Location: Board of Supervisors Chambers

Community Stakeholder and Operational Stakeholder Advisory Meeting

Date: October 5, 2017

Time: 1:30p.m. – 4:00p.m.

Location: Board of Supervisors Chambers

Public Meeting - Groveland

Date: October 17, 2017

Time: 6:00p.m. – 8:00p.m.

Location: Groveland Community Hall

Public Meeting – Tuolumne

Date: November 2, 2017

Time: 6:00p.m. – 8:00p.m.

Location: Tuolumne Memorial Hall

Public Meeting – Sonora

Date: November 14, 2017

Time: 6:00 p.m. – 8:00p.m.

Location: Board of Supervisors Chambers

**Tuolumne County
Multi-Jurisdictional
Hazard Mitigation Plan
2013**

**Annex B:
Groveland Community
Services District**



ANNEX B: GROVELAND COMMUNITY SERVICES DISTRICT

I. JURISDICTION PROFILE..... 4

II. PLANNING PROCESS..... 7

A. DMA 2000 Requirements 7

B. Plan Development and Public Input Process..... 7

C. Jurisdiction Specific Planning and Approval Process 8

III. RISK ASSESSMENT 9

A. DMA 2000 Requirements 9

B. Jurisdiction Specific Risks 9

C. Jurisdiction Specific Hazard Event History 10

D. Jurisdiction Specific Hazard Ranking 11

IV. VULNERABILITY ASSESSMENT 12

A. Overview 12

B. DMA 2000 Requirements..... 12

C. Jurisdictional Assets at Risk to Applicable Hazards..... 13

D. Methodology Used 14

E. Loss Estimations..... 14

F. Development Trend Analysis..... 14

V. CAPABILITY ASSESSMENT 15

A. Legal and Regulatory 15

B. Administrative and Technical 15

C. Financial..... 16

D. Physical Assets..... 16

E. Political Will of Community 16



Tuolumne County Multi-Jurisdictional Hazard Mitigation Plan

VI. MITIGATION STRATEGY	17
A. DMA 2000 Requirements	17
B. 2004 Mitigation Action Progress Report	17
C. Goals, Objectives and Mitigation Actions 2013	18
D. How Mitigation Goals Address Buildings and Infrastructure.....	25
VII. MITIGATION ACTION IMPLEMENTATION.....	29
A. DMA 2000 Requirements	29
B. Prioritization of Mitigation Actions.....	29
C. Action Plan	30
D. Implementation through Existing Plans and Programs	33
E. Continued Public Involvement.....	3
F. Plan Maintenance, Updating and Evaluating.....	34
ACRONYMS.....	35
ADOPTION RESOLUTION	36



GROVELAND COMMUNITY SERVICES DISTRICT

I. JURISDICTION PROFILE

The Groveland Community Services District (GCSD) is a Special District formed by the State of California. Their mission is to provide environmentally sound, economic, and compliant services that meet their customer's needs for water and wastewater distribution, collection and treatment, fire protection, and park facilities in the Groveland, California area of Tuolumne County.

The GCSD service area covers 14.9 square miles in southern Tuolumne County. The District is generally bounded on the north by the Tuolumne River, on the south by Mariposa County, on the east by the Stanislaus National Forest, and on the west by the rural area known as Moccasin. GCSD is the owner and operator of the Groveland Water System, which receives and treats water from the City and County of San Francisco's Hetch Hetchy water system.

GCSD's Water System distributes the treated water to the populated areas of Big Oak Flat, Groveland, and Pine Mountain Lake. The GCSD water supply and distribution system includes three water treatment plants, five storage reservoirs, and approximately 70 miles of distribution piping. The District provides a treated water supply to approximately 3,230 customers. The District also owns and operates the regional wastewater collection, treatment, and regional recycled water system, which provides sewer service to approximately 1,500 customers within the District's service area.

WATER



Big Creek Water Treatment Plant

Water Storage Tank

The GCSD domestic water system consists of approximately 70 miles of water mains, 530 fire hydrants, 2 water supply booster pumps, 2 treatment facilities with clear well storage, an emergency water supply treatment plant, and 5 water tanks throughout 11 different pressure zones.



Tuolumne County Multi-Jurisdictional Hazard Mitigation Plan

WASTEWATER



Wastewater Treatment Plant



Lift Station



Station Upgrade



Bio-Solid Containment



Reservoir 1



Reservoir 2

The GCSD wastewater collection and treatment system consists of 16 sewerage lift stations, 35 miles of gravity mains, 7 miles of force mains and a recycled water treatment plant, 2 storage reservoirs, and approximately 16 acres of spray fields.

FIRE PROTECTION



Fire Station 1



Fire Department Staff



Apparatus



Structure Fire



Wildland Fire



Rescue



Tuolumne County Multi-Jurisdictional Hazard Mitigation Plan

The Groveland Fire Department covers 14.9 square miles including Groveland, Pine Mountain Lake, and Big Oak Flat. In downtown Groveland, Station 1 houses 3 fire engines, a rescue squad, and a utility truck. The Big Oak Flat Station houses 1 apparatus and 1 small fire engine is also stored at the County-owned building at the Pine Mountain Lake Airport. The Groveland Fire Department consists of 3 Captains, 3 Engineer/Firefighters, and a team of more than 23 volunteer and reserve firefighters. The Department provides support and mutual aid to the Tuolumne County Fire Department, the Mariposa County Fire Department, the California Department of Forestry (CAL Fire), and the U.S. Forest Service. Groveland Fire responds to medical aid calls, vehicle accidents, vehicle fires, structure fires, smoke checks, vegetation fires, all other types of fires, and offers public assistance such as lift assists.

PARKS



Mary's Park: Street Level



Lower Park: Stage



Lower Park



Leon Rose Baseball Field



Basketball Court



Skate Park

GCSD owns and operates Mary Laveroni Community Park, Leon Rose Ball Field, the Groveland Skate Park, the Groveland Basketball Court, and the Groveland Dog Park. Mary Laveroni Community Park is also home to the Tuolumne County owned Groveland Youth Center.



II. PLANNING PROCESS

A. DMA 2000 Requirements

DMA Requirements §201.6(b) and §201.6(c)(1):

An open public involvement process is essential to the development of an effective plan. In order to develop a more comprehensive approach to reducing the effects of natural disasters, the planning process shall include:

- (1) An opportunity for the public to comment on the plan during the drafting stage and prior to plan approval;
- (2) An opportunity for neighboring communities, local and regional agencies involved in hazard mitigation activities, and agencies that have the authority to regulate development, as well as businesses, academia and other private and non-profit interests to be involved in the planning process; and
- (3) Review and incorporation, if appropriate, of existing plans, studies, reports, and technical information.

The plan shall document the planning process used to develop the plan, including how it was prepared, who was involved in the process, and how the public was involved.

B. Plan Development and Public Input Process/Countywide Elements

Volume 1 is the master planning document which contains all elements applicable to the County of Tuolumne and each of the 18 individual jurisdictions. Plan development commenced with a full review and revision of the original 2004 Hazard Mitigation Plan. Each of the participating jurisdictions participated fully in the mitigation plan update.

A news release was developed and issued and informative letters were sent out to community groups and neighboring jurisdictions inviting public participation (Attachments A and B). A Hazard Mitigation Planning Group was constructed with representatives from all involved jurisdictions and community stakeholders. Planning group meetings were held which explained the process that was going to be taken to construct the new plan, reviewed hazards of concern and hazard rankings, and explained the risks and vulnerability to the communities' people, buildings and infrastructure. Mitigation goals, objectives and actions were discussed and reviewed thoroughly with all planning group members until concurrence was reached. A capability assessment and action plan were developed to ensure mitigation actions were realistic and attainable and to assign funding sources and responsibility for each proposed activity.

After the MJHMP Planning Group Members, their respective jurisdictions, and Tuolumne County Office of Emergency Services were all satisfied with the newly constructed draft plan



Tuolumne County Multi-Jurisdictional Hazard Mitigation Plan

and its mitigation goal, objectives and actions, a noticed public hearing occurred at the County Emergency Operation's Center. This meeting was widely advertised both locally and in neighboring counties to provide an opportunity for the general public, bordering communities and regional agencies involved in hazard mitigation activities to participate in the planning process. Notice of the public hearing was posted, two weeks in advance, on the County website, community bulletin boards and through a press release. Notification letters were sent to Office of Emergency Services managers in all neighboring Counties. Several weeks prior to the hearing, the newly constructed Plan was posted on the County website to enable the public and stakeholders ample time to read and evaluate it. A Power Point presentation was developed that provided a detailed explanation of the risks and vulnerabilities the community faced.

The mitigation goals, objectives and actions were explained in detail as were the resources that would be used to help mitigate these hazards. In addition, the general public had an opportunity to ask questions and comment on the proposed plan and each of the annexes as they moved through the approval process for Tuolumne County and each of the participating jurisdictions, for a total of 19 public meetings. All comments were reviewed with the stakeholder group and incorporated into the plan as appropriate.

C. Jurisdiction Specific Planning and Approval Process

The Groveland Community Service District's Fire Chief participated in the Hazard Mitigation Planning Group. He brought the Planning Group findings to the District Manager who reviewed the findings with special attention being paid to the issue of wildland fire mitigations. The Director's input was incorporated into both draft and final documents, and reviewed by District staff. A staff report was prepared and made available to the general public for comment and was eventually forwarded to the Groveland Community Services Board of Directors. A public meeting was held within the jurisdiction; input was received from the general public and incorporated into the final approved agency specific plan.

Adoption by the District demonstrates the jurisdiction's commitment to fulfilling the hazard mitigation goals and actions outlined in the plan. Adoption legitimizes the plan and authorizes the District to execute its responsibilities.



Tuolumne County Multi-Jurisdictional Hazard Mitigation Plan

III. RISK ASSESSMENT

A. DMA 2000 Requirements

DMA Requirement §201.6(c)(2)(i):	The risk assessment shall include a description of the type of all natural hazards that can affect the jurisdiction.
DMA Requirement §201.6(c)(2)(i):	The risk assessment shall include a description of the location and extent of all natural hazards that can affect the jurisdiction. The plan shall include information on previous occurrences of hazard events and on the probability of future hazard events.
DMA Requirement §201.6(c)(2)(iii):	For multi-jurisdictional plans, the risk assessment must assess each jurisdiction’s risks where they vary from the risks facing the entire planning area.

B. Jurisdiction Specific Risks

While a detailed hazard description and analysis can be found in the individual hazard profiles found in Volume 1 of this plan, as outlined below the District is susceptible to the following hazards.

Jurisdiction	Earthquake	Wildland Fire	Extreme Weather	Flood	Volcano	Haz Mat	Sinkholes
Groveland Community Services District	✓	✓	✓	✓	✓		

Hazard Specifics: The primary concern in Groveland is fire danger. The risk is extremely high as the GCSD is situated at an elevation where summer temperatures are often quite warm and the humidity can be rather low. Heavy fuels, timber and brush, are located throughout the community as well as surrounding non-residential areas. The Big Creek drainage is a primary concern as it runs through the Pine Mountain Lake community and has a significant buildup of fire fuels. The water system in the communities of Groveland and Big Oak Flats is very old and needs to be updated/reconstructed, compounding the fire problem.



Tuolumne County Multi-Jurisdictional Hazard Mitigation Plan

Flooding does not naturally occur in this mountain community; consequently the community does not participate in the NFIP, however the County does. A small flood hazard is present only due to the possible failure of a small treated wastewater storage reservoir.

C. Jurisdiction Specific Hazard Event History

Volume 1 contains a detailed hazard history and profile for the entire planning area. The following events are specific to the Groveland Community Services District or have occurred in close proximity:

Earthquake History

Historically, earthquake activity in Tuolumne County is significantly below the California state average. In fact, it has one of the lowest earthquake risks in the State. As outlined below, a total of 5 historical earthquake events with recorded magnitudes of 3.5 or greater occurred in or near (50 Miles) Tuolumne County this past century.

Date	Description	Distance from Sonora	Impacts
March 26, 1872	7.6 – 8.0 Magnitude	Epicenter Unknown	Unknown
June 25, 1933	6.1 Magnitude	49.6 Miles	Unknown
June 10, 1965	3.5 Magnitude	42.6 Miles	None
August 10, 1975	4.0 Magnitude	44.3 Miles	None
August 9, 1983	4.0 Magnitude	40.8 Miles	None

Wildfire History

Numerous small fires occur on an annual basis in and around the District. The weather, topography and fuels in the area make fire a constant threat for typically 6 months a year. While a detailed fire history for the entire county can be found in Volume 1 of this plan the following is a sample of fires that have occurred in this general vicinity and share similar fuel types, weather, and topography.

Date	Description	Impacts
September 2004	Tuolumne Fire	750 acres burned and 1 firefighter fatality.
August 1987	Stanislaus Complex	6 major fires burn 145,950 acres, 28 structures, and 1 life was lost.



Tuolumne County Multi-Jurisdictional Hazard Mitigation Plan

Extreme Weather History

Date	Description	Impacts
January - February 1969	Low elevation, heavy snow fall	Tree damage and transportation issues.
November 2010	Freeze	Significant damage to apple and olive crops
March 2011	Winter storm	Minor flooding and significant damage to structures caused by tree falls due to high winds and saturated soil. Damage to GCSD Reservoir #2 outlet flume also occurred.

Volcanic History

There is no history of volcanic activity in recorded history. The proximity to volcanic active areas does present a remote threat of ash fall and the associated respiratory illnesses.

D. Jurisdiction Specific Hazard Ranking

Given the past history, the current conditions, and the overall life and property threat to the Groveland Community Services District the Planning Committee has deemed the probability and severity of each hazard as follows:

Groveland Community Services District	Earthquake	Wildland Fire	Extreme Weather	Volcano	Flood (As a result of dam failure)
Probability	L	H	M	L	L
Severity	H	H	L	L	L

L = Low, M= Medium, H = High



IV. VULNERABILITY ASSESSMENT

A. Overview

The vulnerability assessment is a summary of the hazard’s impact to the community’s vulnerable structures. Community assets and development trends will be identified and assessed with respect to the developed hazard profiles to ascertain the potential amount of damage that could ensue from each identified hazard. This section will include: 1) A description of the critical buildings and infrastructure within the study areas including future building and land use decisions. 2) A general description of the extent of each hazard’s impacts to these vulnerable structures, 3) An estimate of the potential dollar losses to vulnerable structures.

B. DMA 2000 Requirements

DMA Requirement §201.6(c)(2)(ii):	The risk assessment shall include a description of the jurisdiction’s vulnerability to the hazards described in paragraph (c)(2)(i) of this section. This description shall include an overall summary of each hazard and its impact on the community.
DMA Requirement §201.6(c)(2)(ii)(A):	The plan should describe vulnerability in terms of the types and numbers of existing and future buildings, infrastructure, and critical facilities located in the identified hazard areas.
DMA Requirement the §201.6(c)(2)(ii)(B):	[The plan should describe vulnerability in terms of an] estimate of potential dollar losses to vulnerable structures identified in paragraph (c)(2)(i)(A) of this section and a description of the methodology used to prepare the estimate.
DMA Requirement §201.6(c)(2)(ii)(C):	[The plan should describe vulnerability in terms of] providing a general description of land uses and development trends within the community so that mitigation options can be considered in future land decisions.
DMA Requirement §201.6(c)(2)(iii):	For multi-jurisdictional plans, the risk assessment must assess each jurisdiction’s risks where they vary from the risks facing the entire planning area.



Tuolumne County Multi-Jurisdictional Hazard Mitigation Plan

C. Jurisdictional Assets at Risk to Applicable Hazards

Critical Facilities and Infrastructure	Address/Location (Deleted in public document due to security issues)	Value	Wildfire	Flood	Earthquake	Landslides/ Sinkholes	Volcano	Extreme Weather	Hazardous Materials
Administration Building		\$309,750	X		X		X	X	
Maintenance Building		\$50,000	X		X		X	X	
Salt Storage Facility		\$ 25,000	X		X		X	X	
Electrical Building		\$39,650	X		X		X	X	
Shop and Storage Facility		\$47,250	X		X		X	X	
Operations and Lab Building		\$347,192	X	X	X		X	X	
Storage Building/Pole		\$14,700	X		X		X	X	
Second Garotte Water Treatment Facility		\$3,350,000	X		X		X	X	
Pump House		\$31,5000	X		X		X	X	
Pump House		\$32,500	X		X		X	X	
Diesel Generator Building		\$95,000	X		X		X	X	
Alternate Water Supply Treatment Unit		\$3,181,314	X		X		X	X	
Fire Station		\$497,928	X		X		X	X	
Fire Station		\$39,650	X		X		X	X	
Big Creek Water Treatment Facility		\$3,210,000	X		X		X	X	
Waste Water Treatment Plant		\$2,721,659	X	X	X		X	X	
Lift Station # 1		\$130,000	X	X	X		X	X	
Lift Station # 2		\$130,000	X	X	X		X	X	
Lift Station # 3		\$130,000	X	X	X		X	X	
Lift Station # 4		\$13,892	X	X	X		X	X	
Lift Station # 5		\$456,673	X	X	X		X	X	
Lift Station # 6		\$438,742	X	X	X		X	X	
Lift Station # 7		\$451,800	X	X	X		X	X	
Lift Station # 8		\$487,228	X	X	X		X	X	
Lift Station # 9		\$131,410	X		X		X	X	
Lift Station # 10		\$259,882	X		X		X	X	
Lift Station # 11		\$130,000							
Lift Station # 12		\$123,479	X		X		X	X	



Tuolumne County Multi-Jurisdictional Hazard Mitigation Plan

Lift Station # 13		\$92,429	X	X	X		X	X
Lift Station # 14		\$100,000	X	X	X		X	X
Lift Station # 15		\$102,000	X	X	X		X	X
Lift Station # 16		\$18,851	X		X		X	X

D. Methodology Used

To determine the number of critical structures and infrastructure at risk, a combination of field surveys, aerial photos, GIS maps, and Google Earth software were used. The methodology used in preparing the Vulnerability Estimate consisted of determining the value of critical buildings and facilities from insurance property schedules. Critical infrastructure values were established by using actual replacement costs which were determined by recent comparable replacement projects.

E. Loss Estimations

Dollar losses to buildings and infrastructure vary depending upon the natural hazard occurring and the severity of the hazard. In general, earthquakes can extensively damage a wide area therefore critical structure and infrastructure losses should be estimated at a 100% value. Destruction from flooding takes place in specific areas and the damage is historically less severe than that of an earthquake. Thus, the estimated loss as a result of flooding should be calculated at the 50% level. Damage resulting from wildfires should be calculated at 25% of structural value for those structures located within 300 feet of the wildfire areas. Extreme weather could impact any portion of the jurisdiction. Historical data indicates that these events are extremely localized and a 10% loss should be anticipated.

F. Development Trend Analysis

While the population of Tuolumne County is expected to grow slightly in the next five years, there are Land Use policies and elements within the County General Plan to help assure orderly development. No significant development changes have occurred since the initial Plan was developed.

In addition, the Local Agency Formation Commission (LAFCO) of Tuolumne County is tasked with the mission to provide an orderly pattern of growth that reconciles the varied needs of the County. One of the fundamental principles of LAFCO is to ensure the establishment of an appropriate and logical municipal government structure for the distribution of efficient and appropriate public services. LAFCO Land Use Objectives include:



Tuolumne County Multi-Jurisdictional Hazard Mitigation Plan

- The discouragement of urban sprawl
- Preservation of the physical and economic integrity of agricultural lands
- Preservation of open space within urban development patterns
- Orderly formation and development of agencies by shaping local agency boundaries
- The minimization of agencies providing services to a given area
- Utilization of Spheres of Influence to guide future development of agency boundaries.

V. CAPABILITY ASSESSMENT

The following resources are available to the jurisdiction in order to mitigate the effects of the identified hazards:

A. Legal and Regulatory

GCSD is a Special District under California Government Code Section 61,000 (Community Services Districts), charged with Water Treatment and Distribution, Wastewater Collection, Treatment and Disposal, Fire Protection, Parks and Recreation. Services include: providing sufficient water in the District for any present or future beneficial use, acquiring, appropriating, controlling, conserving, storing, and supplying water; using any land or water under District control for recreational purposes; acquiring, constructing, and operating sewer collection, fire protection, and sanitation facilities within the District's boundaries. The District relies on the County for legal authority in Land Use and Planning matters.

One of the District's policies is to improve existing domestic water systems and sewer systems, as needed to meet established state and federal water quality and reliability standards, as well as applicable wastewater standards. Keeping these systems current with regulations helps minimize the potential impacts from natural disasters.

B. Administrative and Technical

Groveland Community Services District has the staff and organizational capability to implement the mitigation strategies proposed, but not the fiscal resources. The District maintains a tiered organizational approach that provides communication from the Board of Directors through the General Manager to the Department Heads.

The 5-member elected Board of Directors governs and sets policy for the District. To facilitate matters, most routine business coming before the District's Board may first be considered by one of its committees or subcommittees. Committees then make recommendations to the full



Tuolumne County Multi-Jurisdictional Hazard Mitigation Plan

Board, which makes the necessary decisions. Under emergency situations, the Board may convene meetings and make decisions quickly.

The General Manager, who reports directly to the Board of Directors, manages day-to-day operations of the Operations & Maintenance, Finance & Administration, Engineering Department and Fire Department. Lateral communication among department heads is encouraged and facilitated with routine meetings.

The District currently has 23 employees, separated into four sections, supervised by the Operations and Maintenance Manager, Finance/Personnel and Administration Manager, District Engineer, and on-duty Fire Captain. Lateral communication is encouraged and facilitated with weekly meetings at the section level within each of the departments and, as well as periodic meetings between the General Manager and the department heads. District personnel are licensed, certified and trained, as appropriate for each job description, which provides sufficient services to respond to a variety of hazard mitigation strategies.

C. Financial

The District maintains a sound financial condition based on user fees, property tax revenue, and a reduction of 10 District staff over the last 5 years, which are adequate to provide:

- The level of service as outlined under its mission statement
- Active protection and development of the water and wastewater resources within the District's jurisdiction
- Fire protection and rescue within the District's jurisdiction and according to mutual aid agreements
- A stable basis for the acquisition of available state and federal loans and grants

The District's fiscal program provides for a very limited amount of funding for infrastructure improvements. Those improvements could lessen the impacts caused by natural disasters. Additional sources of revenue are needed to implement any large-scale mitigation strategies.

D. Physical Assets

The Physical assets available to the District are described in the Jurisdiction Profile.

E. Political Will of Community

The District Board of Directors recognizes the need for promoting and implementing hazard mitigation strategies. The reduction in potential effects from a natural disaster will prove to be a tangible result of such planning. Efforts to secure funding for large-scale hazard mitigation projects are supported by the Board of Directors.



Tuolumne County Multi-Jurisdictional Hazard Mitigation Plan

VI. MITIGATION STRATEGY

A. DMA 2000 Requirements

DMA Requirement §201.6(c)(3)(i):	The hazard mitigation strategy shall include a description of mitigation goals to reduce or avoid long-term vulnerabilities to the identified hazards.
DMA Requirement §201.6(c)(3)(ii):	The mitigation strategy shall include a section that identifies and analyzes a comprehensive range of specific mitigation actions and projects being considered to reduce the effects of each hazard, with particular emphasis on new and existing buildings and infrastructure.

B. 2004 Mitigation Action Progress Report

2004 Jurisdiction Specific Mitigation Actions	Progress Made
Improve water distribution system according to the District's Capital Improvement Plan.	While minor improvements have been made the District will continue to seek grant funding for the District Capital Improvement Plan.
Enhance capability to conduct hazard risk assessments, demonstrate funding needs, and track mitigation activities throughout the county.	Partial Completion. District has worked with County of Tuolumne in development of new Hazard Mitigation Plan and will continue to track progress of mitigation activities.
Create and adopt an emergency response plan to protect public health and safety.	Completed by County of Tuolumne – Winter of 2012
Develop a continuity of operations plan for the District and mutual aid partners.	Not Completed due to lack of resources and staffing.
Develop the urban/wildland interface area to further reduce the risk from wildfires.	Partial Completion. Ongoing - Carry Forward. Pine Mountain Lake Assn. has implemented a mandatory fuel reduction program
Establish a cooperative mutual aid and emergency response plan with utility companies and fire agencies.	GCSD/Groveland Fire Dept has mutual aid agreements with Mariposa and Tuolumne counties. Not Completed with utility companies due to lack of resources and staffing.
Develop and implement a fire fuel reduction programs with public agencies, private companies, and homeowners associations with in the District.	Partial Completion. Ongoing – Carry Forward and support Cal Fire and the FireSafe Council and SWIFT. GCSD residents now pay an additional SRA tax for Cal-Fire. Pine Mountain



Tuolumne County Multi-Jurisdictional Hazard Mitigation Plan

	Lake Association has implemented a mandatory fuel reduction program.
Maximize the use of available hazard mitigation grant programs to protect the District's most vulnerable populations and structures.	Ongoing – Carry Forward
Ensure that all vital/critical facilities are protected from the effects of natural hazards to the maximum extent possible.	Ongoing – Carry Forward
Secure funding from USDA Rural Development Agency, Office of Homeland Security, and other state and federal agencies for infrastructure and facilities upgrades.	In Progress. Application in progress with Department of Water Resources for Proposition 84 funding for improvements to distribution system. Working with Tuolumne County to secure Community Development Block Grants to improve distribution system in Groveland and Big Oak Flat

C. Goals, Objectives and Mitigation Actions 2013

Goal 1 **Promote understanding and support for hazard mitigation by key stakeholders and the public within Tuolumne County.**

Applies to: All jurisdictions

Objective 1 Educate key stakeholders and the public to increase awareness of hazards and opportunities for mitigating hazards.

Mitigation Action 1A Through newsletters, advertisements, speaking engagements and other public contacts, educate the general public and key stakeholders on the issues, responsibilities, and current efforts and successes in the area of disaster preparedness as they impact each agency.



Tuolumne County Multi-Jurisdictional Hazard Mitigation Plan

Goal 2 **Ensure that future development is protected from natural disasters.**

- Applies to: Tuolumne County, City of Sonora, Tuolumne Band of Mi-Wuk Indians, and the Tuolumne Utilities District.
- Objective 2 Limit new development in hazardous areas, and as permissible, build to standards that will prevent or reduce damage.
- Mitigation Action 2A Educate the County and City planning staffs, administrative staffs and elected officials on the importance of keeping current on trends and developments in disaster preparedness.
- Mitigation Action 2B Encourage planning staffs to attend seminars and lectures on naturally occurring hazards so that they may better assist the appropriate governing bodies as they process future developments.
- Mitigation Action 2C In order to better protect life and property, continue to develop a more accurate and comprehensive series of countywide GIS geology, fire, and flood maps and data sets.

Goal 3 **Build and support local capacity and commitment to minimize the jurisdictions within Tuolumne County's vulnerability to potential hazards.**

- Applies to: All jurisdictions
- Objective 3.1 Improve existing capabilities to manage emergency situations.
- Objective 3.2 Enhance the safety of residents, students and staff within the community and jurisdictions.
- Mitigation Action 3.1 A Continue to train all applicable first responders on their roles and responsibilities at the EOC.
- Mitigation Action 3.1B Review and if needed, develop an agency specific SOP for guidance on agency response and coordination to major emergency events.
- Mitigation Action 3.1C In order to ensure that employees are available to assist during a major emergency have all jurisdictions adopt a Family Support Plan. (Note: A model plan can be found in the new County Emergency Services Plan)



Tuolumne County Multi-Jurisdictional Hazard Mitigation Plan

- Mitigation Action 3.1D Review and when necessary, update the jurisdiction's Emergency Operations Plans and supporting documents to ensure coordination with the County's new Emergency Services' Plan.
- Mitigation Action 3.2A Support the development of a County-Regional Community Emergency Response Team (CERT) in local areas.
- Mitigation Action 3.2B Review the initial planning requirements and research the development of standard operating procedures which would minimize helicopter operations over Sonora Elementary School as they utilize the helistop at Sonora Regional Medical Center.
- Mitigation Action 3.2C Review Columbia Airport flight restrictions regarding air traffic over Columbia Elementary School and work with Airport manager to minimize this exposure.
- Mitigation Action 3.2D Support the efforts of the Tuolumne Utilities District to better protect public health by initiating a Watershed Sanitary Survey.
- Mitigation Action 3.2E Study and seek funding to increase the raw water storage of the Tuolumne Utilities District to ensure service for both domestic consumption and sanitary waste removal.
- Mitigation Action 3.2F Make improvements to wastewater systems by replacing or relining collection pipes so as to reduce sewer overflows and limit inflow and infiltration subsequently reducing the public health threat.
- Mitigation Action 3.2G Develop a program that would, in emergency situations, enable water districts and water companies to share water resources through inter-connections.
- Mitigation Action 3.2H Develop a program to secure water rights for Tuolumne County.



Tuolumne County Multi-Jurisdictional Hazard Mitigation Plan

Goal 4 **Minimize the level of damage and losses to people, existing and future critical facilities and infrastructure due to flooding.**

Applies to: Tuolumne County, City of Sonora, Curtis Creek School District, Belleview School District

Objective 4 Enhance the ability of community assets, particularly critical facilities, located in the 100-year floodplain to handle existing and projected flood levels.

Mitigation Action 4A Work to improve localized flood prone areas through a combination of vegetation management and storm drain improvements. (i.e. Sonora, Curtis, Sullivan, and Woods Creeks)

Mitigation Action 4B Maintain compliance with the National Flood Insurance Program (NFIP) requirements.

Mitigation Action 4C Through Development Review process, restrict construction of essential service facilities in the 100-year flood plain.

Mitigation Action 4D In order to better protect life and property, record a notice on properties located in flood zones utilizing FIRM maps and notify property owners of said action.

Mitigation Action 4E Continue to work cooperatively with the state and federal flood related agencies for funding improvements through grant and agency programs.

Mitigation Action 4F Seek funding sources for and initiate a watershed study for the County.

Mitigation Action 4G In cooperation with Jamestown Sanitary District, investigate planning and funding for relocation of the wastewater treatment facility away from Wood's Creek and its potential flooding capabilities.

Mitigation Action 4H Study and seek funding to improve the drainage through the Sullivan Creek Campus.

Mitigation Action 4I Study ways to improve drainage to prevent erosion on the steep slopes of the Curtis Creek campus and seek funding sources for mitigation.

Mitigation Action 4J Study ways to improve drainage to prevent erosion on the steep slopes of the Belleview School campus and seek funding sources for mitigation.



Tuolumne County Multi-Jurisdictional Hazard Mitigation Plan

Goal 5 **Minimize the level of damage and losses to people, existing and future critical facilities and infrastructure due to wildland fires.**

Applies to: County of Tuolumne, City of Sonora, Columbia Fire Protection District, Groveland Community Service District, Twain Harte Community Service District, Mi-Wuk/Sugar Pine Fire Protection District, Curtis Creek School District, Tuolumne Band of Me-Wuk Indians, Belleview Elementary School District, Tuolumne Utilities District, and Columbia Union School District.

Objective 5.1 Continue the comprehensive approach to reducing the level of damage and losses due to wildland fires through vegetation management, code enforcement, GIS mapping, and planning processes.

Objective 5.2 Enhance collaboration amongst all fire agencies and stakeholders.

Mitigation Action 5.1A Prevent wildfires through collaborative code enforcement efforts by working with Engine Company Captains and Fire Prevention staff to increase the education and enforcement of PRC 4291, defensible space rules.

Mitigation Action 5.1B In order to assist fire prevention efforts and to better manage large fires when they occur, continue to improve GIS mapping and tracking efforts by gathering and maintaining relevant GIS data layers and imagery and utilizing the best available mapping applications and software.

Mitigation Action 5.1C Continue to work with the Hwy 108 FireSafe Council and SWIFT to initiate fuel thinning and chipping projects in high priority areas. Collaborate with property owners and regulatory agencies in order to utilize prescribed fire on private and state owned lands in the county.

Mitigation Action 5.1D Work with the Hwy 108 FireSafe Council and SWIFT to update as needed the Community Wildfire Protection Plans for the County so that they will continue to:

- Assess the fire hazard in the County
- Prioritize treatment areas
- Enhance collaboration amongst all fire agencies and stakeholders
- Streamline environmental review processes



Tuolumne County Multi-Jurisdictional Hazard Mitigation Plan

Mitigation Action 5.1E Improve water supply and storage for firefighting use at the Curtis Creek Campus.

Mitigation Action 5.1F Develop a wildfire evacuation plan which includes sheltering in place, at both the Curtis Creek and Sullivan Creek campuses and Columbia Union Elementary and Belleview Elementary.

Mitigation Action 5.1G Work with the Tuolumne Utilities District to improve fire flow, system reliability and redundancy, and increased water supply in their responsibility areas.

Mitigation Action 5.1H Protect water conveyance system by reducing fuels adjacent to wooden flumes.

Mitigation Action 5.2A Encourage participation of all Fire Agencies in the monthly Fire Chief Association meetings and support, when possible, efforts by the Association to improve fire protection and preventions efforts in the County.

Mitigation Action 5.2B Encourage participation in cooperative automatic and mutual aid agreements between Districts, the County and the City of Sonora.

Goal 6 **Minimize the level of damage and losses to people, existing and future critical facilities and infrastructure due to geological events (earthquakes, volcanoes, landslides, and sinkholes).**

Applies to: All jurisdictions

Objective 6 Continue public education efforts so as to better prepare the citizens of Tuolumne County from the effects of a significant geological event.

Mitigation Action 6A Working with Cal EMA, increase participation in earthquake preparedness activities such as the annual Great California Shake-Out drill.

Mitigation Action 6B Continue to support the work of utility districts in replacing sewer and water lines and portions of the flume that are the most vulnerable to an earthquake or landslide.

Mitigation Action 6C Seek funding to hire a qualified consultant to prepare a mine subsidence study.



Goal 7 **Limit risk to, and impacts from hazardous materials spills, intentional discharges, illegal disposals, transportation accidents, or system failures**

Applies to: All Jurisdictions

Objective 7.1 Continue efforts to manage the use, sale, distribution and disposal of hazardous materials in Tuolumne County.

Objective 7.2 Improve emergency response efforts in the control and clean-up of accidental spills and releases.

Mitigation Action 7.1A Educate community members on the dangers associated with household hazardous materials including proper storage techniques.

Mitigation Action 7.1B Continue efforts to educate applicable employees on the handling, use, storage and disposal of hazardous materials utilized in the workplace.

Mitigation Action 7.2A Identify steps that can be taken by County OES in conjunction with First Responders in developing a more timely and OSHA compliant response to these hazardous materials spills and releases.

D. How Mitigation Goals Address Existing and New Buildings and Infrastructure

The following tables demonstrate how the proposed mitigation goals take into account both existing and new buildings and infrastructure.

MITIGATION GOALS	EXISTING BUILDINGS AND INFRASTRUCTURE							
	Electrical and Power Infrastructure	Dams and Water Management	Communication Facilities	Critical Roads and Bridges	Essential Service Facilities (Fire, Law, Hospitals)	Agricultural Infrastructure	Public Structures	
<p>Goal 1-General Mitigation: Promote understanding and support for hazard mitigation by key stakeholders and the public within the County of Tuolumne.</p>	X	X	X	X	X	X	X	
<p>Goal 2-General Mitigation: Ensure that future development is protected from natural disasters.</p>	X	X	X	X	X	X	X	
<p>Goal 3-General Mitigation: Build and support local capacity and commitment to minimize the County of Tuolumne's vulnerability to potential hazards.</p>		X		X	X	X	X	
<p>Goal 4-Flood: Minimize the level of damage and losses to people, existing and future critical facilities and infrastructure due to flooding.</p>	X	X	X	X	X	X	X	



Tuolumne County Multi-Jurisdictional Hazard Mitigation Plan

<p>Goal 5-Wildfire: Minimize the level of damage and losses to people, existing and future critical facilities and infrastructure due to wildfire.</p>	X	X	X	X	X	X	X
<p>Goal 6-Earthquake: Minimize the level of damage and losses to people, existing and future critical facilities and infrastructure due to earthquake, landslide and sinkholes.</p>	X	X	X	X	X	X	X
<p>Goal 7- Hazardous Materials: Limit risk to, and impacts from hazardous materials spills, intentional discharges, illegal disposals, transportation accidents, or system failures</p>	X	X	X	X	X	X	X



Tuolumne County Multi-Jurisdictional Hazard Mitigation Plan

MITIGATION GOALS	NEW PROJECTS/BUILDINGS AND INFRASTRUCTURE						
	Residential Subdivisions	Various mixed use projects (residential and commercial)	Ag Clusters (residential, open space, and Ag uses)	Commercial and Industrial Projects	Essential Service Facilities	Public Structures	
Goal 1-General Mitigation: Promote understanding and support for hazard mitigation by key stakeholders and the public within the County of Tuolumne.	X	X	X	X	X	X	
Goal 2-General Mitigation: Ensure that future development is protected from natural disasters.	X	X	X	X	X	X	
Goal 3-General Mitigation: Build and support local capacity and commitment to minimize the County of Tuolumne's vulnerability to potential hazards.	X	X	X	X	X	X	
Goal 4-Flood: Minimize the level of damage and losses to people, existing and future critical facilities and infrastructure due to flooding.	X	X	X	X	X	X	



Tuolumne County Multi-Jurisdictional Hazard Mitigation Plan

<p>Goal 5-Wildfire: Minimize the level of damage and losses to people, existing and future critical facilities and infrastructure due to wildfire.</p>	X	X	X	X	X
<p>Goal 6-Earthquake: Minimize the level of damage and losses to people, existing and future critical facilities and infrastructure due to earthquake, landslide and sinkholes.</p>	X	X	X	X	X
<p>Goal 7- Hazardous Materials: Limit risk to, and impacts from hazardous materials spills, intentional discharges, illegal disposals, transportation accidents, or system failures</p>	X	X	X	X	X

VII. MITIGATION ACTION IMPLEMENTATION

A. DMA 2000 Requirements:

DMA Requirement §201.6(c)(4)(i):	The plan maintenance process shall include a section describing the method and schedule of monitoring, evaluating, and updating the mitigation plan within a five-year cycle.
DMA Requirement §201.6(c)(4)(ii):	The plan shall include a process by which local governments incorporate the requirements of the mitigation plan into other planning mechanisms such as comprehensive or capital improvement plans, when appropriate.
DMA Requirement §201.6(c)(3)(iii):	The mitigation strategy section shall include an action plan describing how the actions identified in section (c)(3)(ii) will be prioritized, implemented, and administered by the local jurisdiction. Prioritization shall include a special emphasis on the extent to which benefits are maximized according to a cost benefit review of the proposed projects and their associated costs.
DMA Requirement §201.6(c)(3)(iv)	For multi-jurisdictional plans, there must be identifiable action items specific to the jurisdiction requesting FEMA approval or credit of the plan.

B. Prioritization of Mitigation Actions

The Mitigation actions were prioritized using a system which is outlined below. This system factored in the following components: 1) Probability of Occurrence 2) Effectiveness of Mitigation Actions, 3) Practicality of mitigation action for the jurisdiction based on the STAPLE+E criteria of Social, Technical, Administrative, Political, Legal, Economic and Environmental components. This gave rise to the development of an overall relative risk value that resulted in ratings of HIGH, MEDIUM and LOW for each of the mitigation actions. The resultant prioritization was presented to key stakeholders and lengthy discussions were held to ensure that the results were indeed applicable to the priorities and capabilities of the jurisdictions' served.

Sample Mitigation Action Prioritization Worksheet

Mitigation Action	Probability of Associated Threat Occurrence Low=1 Med.=2 High=3	Effectiveness of Mitigation Action Minimal=1 Moderate=2 High=3	Practicality (based on STAPLE+E criteria) Low=1 Medium=2 High=3	Relative Risk (Product of Risk Components)
1.A	3	2	3	18



Tuolumne County Multi-Jurisdictional Hazard Mitigation Plan

In assessing and evaluating each strategy, the following factors were considered:

- The benefit justified the cost
- The availability of financial resources
- The availability of staff resources
- Impact on County department functions
- Strategies reflect the goals and objectives

C. Action Plan

Once the MJHMP has received formal adoption by the Board of Supervisors and the various governing bodies the following action plan, agreed upon by Hazard Mitigation Planning Group, will be used to ensure the Plan is implemented and remains an active and relevant document. Actual implementation may be dependent upon funding availability.

ACTION PLAN FOR TUOLUMNE COUNTY MULTI-JURISDICTIONAL PLAN

MITIGATION ACTION		IMPLEMENTATION STRATEGY			
ID	DESCRIPTION	RESPONSIBLE DEPARTMENT	FUNDING SOURCES	COMPLETION DATE	PRIORITY
1.A	Educate Public and Stakeholders	OES - lead All support	General Funds	Ongoing	Medium
2.A	Educate Staff	OES – lead All support	None Required	Ongoing	Medium
2.B	Continuing Education	OES –lead All support	General Funds	Ongoing	Medium
2.C	Improve GIS Capabilities	County CRA, City of Sonora & CAL Fire	General Funds	Ongoing	Medium
3.1A	EOC Roles and Responsibility training	OES – lead All support	General Funds	Ongoing	High
3.1B	SOP Development (Emer. Response)	All agencies OES support	General Funds	01/01/14	High
3.1C	Adopt Family Support Plan	All agencies OES support	General Funds	01/01/14	Medium
3.1D	Emergency Operations Plans	All agencies OES support	None Required	01/01/14	Medium
3.2A	Support CERT	All agencies	None	Ongoing	Low



Tuolumne County Multi-Jurisdictional Hazard Mitigation Plan

		OES support	Required		
3.2B	Helicopter Operations	OES	None Required	07/01/14	Low
3.2C	Columbia Airport Flight Restrictions	OES	None Required	07/01/14	Low
3.2D	Watershed Sanitary Survey	TUD OES support	Grant	07/01/15	Medium
3.2E	Raw Water Storage	TUD	Grant	Ongoing	Medium
3.2F	Wastewater System Improvements	TUD	General Fund & Grants	Ongoing	High
3.2G	Water Interconnects	All Water Agencies	Grants & General Funds	Ongoing	High
3.2H	Water Rights	All Water Agencies	Grants & General Funds	Ongoing	Medium
4.A	Creek/Storm Drain Management	County CRA and City of Sonora	General Fund	Fall of each year	Low
4.B	NFIP Requirements	County CRA and City of Sonora	General Fund	Ongoing	Medium
4.C	Development Review	County CRA and City of Sonora	General Fund	Ongoing	Medium
4.D	Notice Property Owners	County CRA and City of Sonora	General Fund	09/01/15	Medium
4.E	Storm Drain Improvements	County CRA and City of Sonora	Grants	Ongoing	Medium
4.F	County Watershed Study	County CRA	Grants	Ongoing	Medium
4.G	Jamestown Water Treatment Plant Relocation	Jamestown Sanitary District with County OES & CRA support	Grants	Ongoing	Medium
4.H	Sullivan Creek	Sullivan Creek School District	Grants	Ongoing	Medium
4.I	Drainage	Curtis Creek School District	Grants	Ongoing	Medium
4.J	Drainage	Bellevue School District	Grants	Ongoing	Medium
5.1A	Education and Enforcement of PRC 4291 defensible space rules	All Fire Agencies	State Direct Funding or General Funds	Ongoing	High



Tuolumne County Multi-Jurisdictional Hazard Mitigation Plan

5.1B	Improve GIS Mapping and Tracking	CAL Fire-County Fire	General Fund	Ongoing	Medium
5.1C	Fuel Thinning and Chipping Projects	All Fire Agencies	Grants	Ongoing	High
5.1D	Community Wildfire Protection Plan Update	CAL Fire-County Fire	General Fund	08/01/14	Medium
5.1E	Improve Water Supply/ Storage at Curtis Creek School	Curtis Creek School District	Grants	01/01/16	High
5.1F	Evacuation Plans for Curtis Creek, Sullivan Creek, Columbia & Belleview Schools	District Superintendents with fire agencies supporting	None Required	09/01/13	High
5.1G	Water Supply/Fire Flow	TUD, with fire agencies supporting	General Funds and Grants	Ongoing	High
5.1H	Protect Flumes	TUD, with fire agencies supporting	General Funds and Grants	Ongoing	Medium
5.2A	Fire Chiefs Association	All Fire Agencies	None Required	Ongoing	Medium
5.2B	Mutual/Auto Aid	All Fire Agencies	None Required	Ongoing	Medium
6.A	Earthquake Preparedness Exercises	OES – lead All support	None Required	Fall of Each Year	Medium
6.B	Replace Vulnerable Water/Sewer Lines	TUD	General Fund	Ongoing	Medium
6.C	Subsidence Study	County CRA & City of Sonora	Grant	09/01/14	Medium
7.1A	Educate Community on Hazardous Materials	OES – lead all support	None Required	Ongoing	Medium
7.1B	Educate Staff on Hazardous Materials	OES – lead all support	None Required	Ongoing	Medium
7.2A	Improve Response Capabilities	OES – lead Fire agencies support	None Required	09/01/14	Medium



Tuolumne County Multi-Jurisdictional Hazard Mitigation Plan

D. Implementation Through Existing Plans and Programs

The general administrative oversight of this MJHMP rests with the Tuolumne County Office of Emergency Services. Tuolumne County currently uses comprehensive land use planning, capital improvements planning, and building codes to guide and control development within the County. This MJHMP will be provided to those responsible for the County's General Plan development mechanisms to ensure that consistency is maintained. The same holds true whenever substantive changes are made.

Specific Mitigation Actions have been assigned to this jurisdiction. These individual actions will fall under the general administrative oversight of the local governing body and will be incorporated into the existing Plans and Programs. Should technical expertise not be available in these agencies, the County Office of Emergency Services is committed to, when possible, coordinating the resources of the County to assist with implementation of the mitigation actions.

E. Continued Public Involvement

Tuolumne County and the District understand the importance of involving the public in the ongoing Hazard Mitigation Plan review and updating process. Resultantly, the following actions will be taken:

- A copy of the MJHMP will be posted on the County website and will direct the public on how to make suggestions to the County Office of Emergency Services for future plan edits.
- Hard copies of the Plan will be available at the County Office of Emergency Services and the County Library



F. Plan Monitoring, Evaluating and Updating

DMA Requirement §201.6(d)(3): A local jurisdiction must review and revise its plan to reflect changes in development, progress in local mitigation efforts, and changes in priorities and resubmit if for approval within 5 years in order to continue to be eligible for mitigation project grant funding.

In order to continue to be an effective representation of each jurisdiction's overall strategy for reducing its risks from natural hazards, the mitigation plan must reflect current conditions. Monitoring and evaluating the plan will occur annually to make certain that the goals and objectives for the County and participating jurisdictions are current and mitigation activities are being carried out.

To ensure that regular review and update of this Multi-Jurisdictional Hazard Mitigation Plan takes place, the County Office of Emergency Services will communicate with the MJHMP Planning Group members annually to see if their plan components are up-to-date and meet current realities.

The MJHMP Planning Group will review each goal and objective to evaluate its:

- Relevance to current and evolving situations in Tuolumne County
- Consistency with changes in local, state and federal policy

The planning group will review the risk assessment component of the plan to ascertain if the information needs to be updated or modified. Each jurisdiction will report on:

- Current status of their mitigation actions
- How coordination efforts are proceeding
- Implementation processes that worked well
- Any difficulties encountered
- Any strategies in need of revision

If the plan review leads the Hazard Mitigation Planning Group to determine that modifications are necessary, then the County or the applicable jurisdiction can initiate a plan amendment.



Acronyms

Acronym	Definition
CGS	California Geological Survey
Cal EPA	California Environmental Protection Agency
Caltrans	California Department of Transportation
CAL Fire	California Department of Forestry and Fire Protection
CDF	California Department of Forestry and Fire Protection
CDHS	California Department of Health Services
CFR	Code of Federal Regulations
CGS	California Geological Survey
CISN	California Integrated Seismic Network
CSSC	California Seismic Safety Commission
DFG	State Department of Fish and Game
DHS	Department of Homeland Security
DWR	Department of Water Resources
FEMA	Federal Emergency Management Agency
FIRM	Flood Insurance Rate Map
FMA	Flood Mitigation Assistance
FMP	Floodplain Management Plan
FRAP	Fire and Resource Assessment Program
GIS	Geographic Information System
HMGP	Hazard Mitigation Grant Program
LHMP	Local Hazard Mitigation Plan
NFIP	National Flood Insurance Program
NOAA	National Oceanic and Atmospheric Administration
NPS	National Park Services
OES	Governor's Office of Emergency Services
SEMS	Standardized Emergency Management System
SFHA	Special Flood Hazard Area
USDA	U.S. Department of Agriculture
USGS	U.S. Geological Survey



Tuolumne County Multi-Jurisdictional Hazard Mitigation Plan

RESOLUTION 1-13, A RESOLUTION OF THE BOARD OF DIRECTORS
OF GROVELAND COMMUNITY SERVICES DISTRICT
ADOPTING ANNEX "B" of the TUOLUMNE COUNTY
MULTI-JURISDICTIONAL LOCAL HAZARD MITIGATION PLAN

WHEREAS, mounting costs of disaster recovery in the nation over the past decade has promoted interest in providing effective ways to minimize our country's hazard vulnerability; and

WHEREAS, the Disaster Mitigation Act (DMA) of 2000, also commonly known as "The 2000 Stafford Act Amendments," constitutes an effort by the Federal government to reduce the rising cost of disasters; and

WHEREAS, the Disaster Mitigation Act of 2000 (the Act) requires local governments to develop and submit mitigation plans in order to qualify for the Hazard Mitigation Grant Program (HMGP) project funds; and

WHEREAS, the purpose of the Disaster Mitigation Act of 2000 was to establish a national program for pre-disaster mitigation, streamline administration of disaster relief at both the federal and state levels, and control federal costs of disaster assistance; and

WHEREAS, the Groveland Community Services District, in conjunction with Tuolumne County Office of Emergency Services has concluded a planning process which allowed participation by the local community, and has developed a multi-jurisdictional Hazard Mitigation Plan that meets the needs established by the Act.

NOW, THEREFORE, BE IT RESOLVED that Groveland Community Services District Board of Directors hereby accepts the Tuolumne County Multi-Jurisdiction Hazard Mitigation Plan as an official plan; and hereby adopts Groveland Community Services District Hazard Mitigation Plan to be included as annex "B" to the County Plan.

BE IT FURTHER RESOLVED that a copy of this Resolution and a copy of the Multi-Jurisdictional Hazard Mitigation Plan will be forwarded to the Governor's Office of Emergency Services and the Federal Emergency Management Agency by the Tuolumne County Office of Emergency Services.

On motion of Board Member Steve Perreira, seconded by Board Member Virgil McVicker, and by the following roll call vote, this Resolution is approved and adopted by the Groveland Community Services District Board of Directors on January 3, 2013.

AYES: Directors Armstrong, McVicker, Riley, Perreira, and Wemmer

NOES:

ABSTAIN:

ABSENT:

ATTEST:

Steve Perreira
Board President

Jennifer L. Flores
Board Clerk

**Groveland Community Services District
Fire Department / CALFIRE**

18966 Ferretti Road Groveland, CA 95321

Staff Report
October 9, 2017

To: Board of Directors

From: Paul Avila, Assistant Chief
By: Jude R. Acosta, Battalion Chief

Subject: Monthly Activity Report – September 4, 2017 to October 1, 2017

Operations:

Emergency Incident Response:

On September 15th Engine 781 responded to a patient with an altered level of consciousness. Upon arrival, our crews found the patient unresponsive and not breathing. They immediately initiated CPR, set up the Lucas Machine and assisted the patient breathing with a bag valve mask. Crews were able to regain pulses and the patient was transported to Sonora Regional Medical Center.

On September 29th Fire Units responded to a vegetation fire on Highway 120 east of Priest Coulterville Rd. Upon arrival, there was a 1/8 acre of brush burning at a slow rate of spread toward Rattlesnake Creek. Fire crews aggressively attacked the fire, immediately containing it. The cause of the fire is under investigation.

Apparatus and Equipment:

Engine 781 is currently at Burton's for repairs; all other equipment is in service and available.

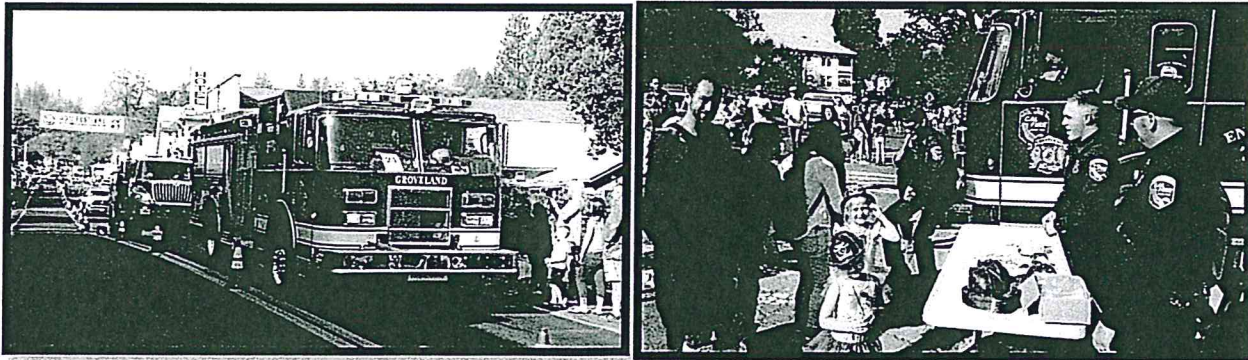
Training:

In addition to our monthly Emergency Medical Technician (EMT) curriculum and engine company performance standards, Battalion personnel received the following specialized training:

- Congratulations to Engineer Jason Beal who graduated the CAL FIRE Firefighter Academy in lone.
- Area Orientation
- Rope Rescue
- LE-100 Defensible Space Inspection
- 24' Ladder Evolutions
- Groveland Hotel building construction walk-through
- Downtown Groveland Tour

Public Education:

Groveland Fire and CAL FIRE participated in the Annual 49er Festival Parade and Chili Cook-off. There was an open house at the fire station with our firefighters handing out public education materials to the children. Both fire engines were on display to show the equipment carried and capabilities.





RESPONSE ACTIVITY TALLY REPORT

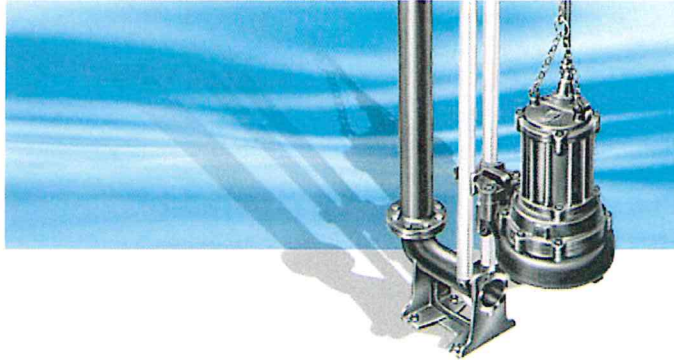
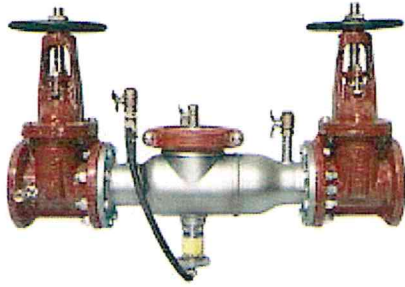
55045

GROVELAND CSD

Alarm Date From: 9/4/2017 To: 10/1/2017

Report Date 10/3/2017

INCIDENT TYPE	INCIDENT TYPE DESCRIPTION	INCIDENT COUNT
GCS		
321	EMS call, excluding vehicle accident with injury	17
381	Rescue or EMS standby	1
550	Public service assistance, other	3
551	Assist police or other governmental agency	5
700	False alarm or false call, other	1
	Subtotal	27
GRV		
321	EMS call, excluding vehicle accident with injury	6
	Subtotal	6
FDID 55045	GROVELAND CSD	Grand Total 33



Monthly O&M Report for September 2017

Water Breaks or Repairs

- Water Break PMD unit 3 lot 201 (Service Tube)
- Water break PMD at the Back gate (service Tube)

Sewer Line Breaks or Repairs

- None for the Month.

Customer Service

Service request

- 14 customers complaints
- 3 check/ repair meter
- 0 Req. to Engineering Dept.
- 0 new water meter installation
- 0 Inspect Sewer Connect

- 18 lock offs
- 0 Color Taste-quality.
- 6 Meter Change Out
- 0 Pull Meter
- 1 Read / Quote
- 50 Re-Read new meter reader
- 16 Read Tenant out
- 5 Turn off Meter
- 12 Turn on meter
- 0 Test meter
- 0 Winterize Meter
- Monthly lock offs due to non-payment
- Marked multiple USA throughout the District

On Call-

- 12 Call out's
- 11 Water related
- 1 Sewer related
- 0 Park

Water-

- Read all District Water Meters.
- Checked all auto flusher and replaced De-Chlor tabs as needed.
- Sampled/Dipped Tank 2, 4 & 5.
- Dosed Tank 2 and 5 with 12.5% Chlorine
- Weekly Water Samples at both Water Treatment Plants and Distribution system.
- Daily, weekly and monthly servicing of both Water Treatment Plants and both Pall Trailers.
- Changed out Reagents in C117 Chlorine Analyzers at both Water Treatment Plants.
- Weekly calibration and referencing of analyzing equipment at both Water Treatment Plants and both Pall Trailers.
- Prepared and sent monthly Water report to the State.
- Monthly water meter lock offs.
- Changed out/reprogrammed multiple ERT's throughout the District.
- Changed out multiple meters throughout the District.
- Annual Backflow Testing finished Route 2 and started 4 & 5
- Diagnosed Tank 2 Radio problems and reset /reprogrammed
- Repaired broken water filter at unit 2 lot 183.
- Repaired water line at the meter at unit 4 lot 93
- Installed new Pressure Transducer for 2G Clear Well.

- Repaired sand separator at unit 13 lot 93.
- Put cut back on water line repair on PMD and finished cleanup of debris.

Sewer-

- Weekly Preventative Maintenance Check (PMCS) and Generators Checks at all Lift Stations.
- Cleaned the pressure transducers and floats as needed at all Lift Stations.
- Did odor control at all Lift Stations as needed.
- Chemically cleaned various gravity sewer lines throughout the District.
- Hydro-Flushed various gravity sewer lines throughout the District.
- Prepared and sent in monthly Sewer report to the State.
- Ran the Screw press to waste from the Digester.
- Emptied drying beds.
- Moved pallets of salt to the STP OSG room for Chlorine Generation.
- Sprayed down and cleaned roto room daily.
- Ran irrigation for all spray fields. On schedule to be ready for upcoming winter.
- Did daily rounds/weather and Lab for the WWTP.
- Took weekly Bacti Samples of the CCC.
- Took Rattle Snake Creek Samples because of Sewer Spill on 8-22-2017. Walked all of Rattle Snake Creek and took extra samples from the first area with water so we can narrow down why creek samples are coming back hot.
- Checked and marked sewer lines and manholes on Tannahill Dr
- Installed new Sewer line markers for unit 9 lot 2.
- Ran CCTV camera for unit 5 lot 57 for possible sewer blockage. Blockage was on the PO side failed sewer lateral.
- Worked on Groveland gravity Manhole inspections.
- Po was concerned of a Possible Sewer problem on Boitano Rd. Employees checked location and found no sewer in that area just ground water.
- Cleaned out dried solids from Res. # 1.
- Took out the Titan Tube from Drying Bed # 5.

Vehicle Maintenance-

- Did weekly checks on standby Generators at Tank 2, 5, Fire House and shop.
- Fueled Rain-4-Rent and ran for irrigating Fields and moved down because level of Res.2 has dropped.
- Cleaned and organized District Trucks.
- Washed and serviced the Mini Excavator.
- Washed and serviced Truck 10.
- Repaired the Vac-Tron wiring for the lights.

- Worked on Engine 781 ABS problem could not diagnose made appointment with Burton Fire in Modesto and dropped off.
- Diagnosed problem with the T320 Bobcat. Had to replace broken drive belt washed and put back in service.
- Completed District surplus sale.
- Serviced Truck 4. During service decided that would be the Vehicle replaced by Truck 20.
- Repaired Truck 9 Shifting cable.
- Repaired Truck 7 exhaust sensor.

Buildings & Grounds-

- Blew off Admin/District Driveway and Entrance
- Cleaned shop / work bench and put away tools
- Cleaned up around Maintenance shop
- Ground maintenance around the upper/ lower park and skate park
- Watered District roads
- Cleaned driveway in front of Bio Solids building
- Cleaned around District yard and made dump run.
- Cleaned out Maintenance Shop wash rack and drains.
- Cleaned around Dumpster area and took cardboard to Moore Brothers.
- Mowed park and did maintenance on all Park facilities for the 49er Festival.
- Capped broken sprinkler line at the upper park near new Playground.
- Ran new phone line for District Board Room.
- Replaced multiple sprinklers in the upper Park area.
- Installed new Hvac filters for the Admin office.
- Took new pest control employee around District facilities.
- Took down the Park Canopy.
- Measured for new sprinkler line around new Playground.

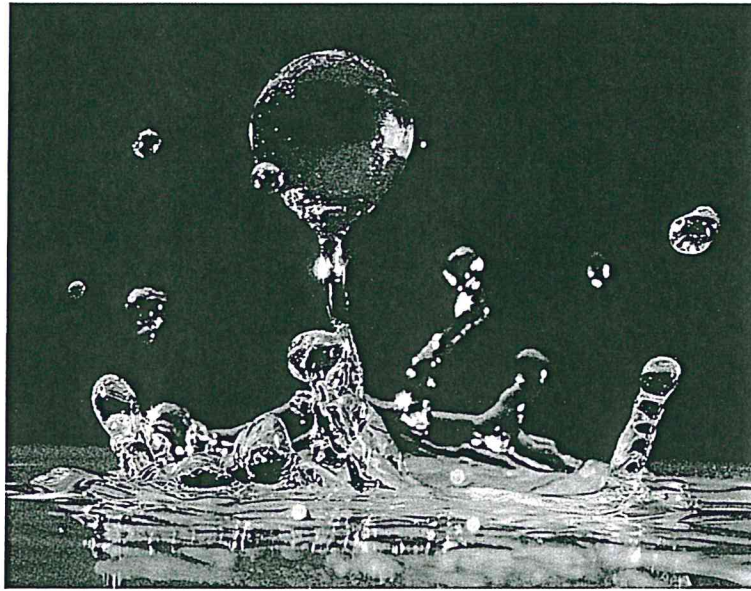
Safety & Training-

- Weekly safety meetings.
- Weekly vehicle checks.

Major Projects

- Compacted playground area and worked with California Playground on PIP Rubber installation.
- Excavated and poured new ADA ramp and Trash can pad to new Playground and set new signs for playground rules.

- Loaded all Bio solids and had hauled off.
 - Worked on lower park restroom remodel, painting walls, installed new splash panels, installed new toilets and removed old flooring and painted floor.
 - Excavating for new blower pad, formed and poured with concrete. Started new retaining wall around the Screw Press.
 - Worked with Ken's Asphalt on patch repairs from past water breaks.
-



ACCOUNTS PAYABLE CHECK LISTING

September, 2017

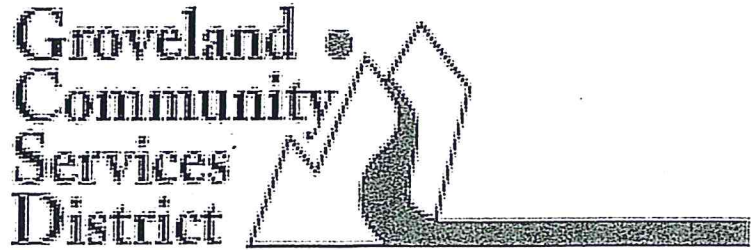
Fiscal Year 17/18

Board Approval _____

Bank Reconciliation

Checks by Date

User: dpercoco
Printed: 10/02/2017 - 11:34AM
Cleared and Not Cleared Checks



Check No	Check Date	Name	Comment	Module	Clear Date	Amount
				PR		
15857	9/7/2017	Accela, Inc. #774375		AP		930.55
15858	9/7/2017	Aqua Labs		AP		7,015.00
15859	9/7/2017	Dataprose Inc.		AP		1,818.61
15860	9/7/2017	Theo Edwards		AP		1,172.50
15861	9/7/2017	GCSO		AP		5,403.05
15862	9/7/2017	General Supply Co		AP		1,266.52
15863	9/7/2017	KC Auto Parts		AP		145.60
15864	9/7/2017	Mountain Oasis Water Systems		AP		151.00
15865	9/7/2017	Nationwide Long Distance Service, Inc.		AP		9.52
15866	9/7/2017	Ronald Percoco		AP		575.00
15867	9/7/2017	Ronald Percoco		AP		1,972.00
15868	9/7/2017	PG&E		AP		671.39
15869	9/7/2017	Jonathan Sterling		AP		42.47
15870	9/7/2017	Western Communications, Inc.		AP		61.60
115037	9/13/2017	Operating Engineers Local #3		AP		258.94
115038	9/13/2017	US Treasury		AP		138.52
901774	9/13/2017	Dept of Child Support Services		AP		235.95
901775	9/13/2017	EDD - Electronic		AP		1,236.98
901776	9/13/2017	Federal EFTPS		AP		9,510.67
901777	9/13/2017	Pers - Electronic		AP		5,779.35
901778	9/13/2017	TD Ameritrade Trust Co.		AP		800.00
115015	9/15/2017	Jonathan Sterling		PR		2,954.55
15871	9/21/2017	AM Consulting Engineers, Inc.		AP		22,433.00
15872	9/21/2017	Aqua Labs		AP		5,630.00
15873	9/21/2017	Blue Shield of California		AP		16,627.13
15874	9/21/2017	W. H. Breshears		AP		2,758.13
15875	9/21/2017	Calgon Carbon Corporation		AP		311.42
15876	9/21/2017	CMRS-FP		AP		800.00
15877	9/21/2017	Conifer Communications		AP		522.34
15878	9/21/2017	Roy Conley		AP		129.79
15879	9/21/2017	CV Industrial Corp		AP		818.55
15880	9/21/2017	CWEA		AP		265.00
15881	9/21/2017	Dish Network		AP		45.67
15882	9/21/2017	Ferguson Enterprises Inc. #1423		AP		4,032.39
15883	9/21/2017	Foothill-Sierra Pest Control		AP		244.00
15884	9/21/2017	FP Mailing Solutions		AP		286.36
15885	9/21/2017	GCSO Petty Cash		AP		108.13
15886	9/21/2017	GeoAnalytical Laboratories, Inc.		AP		2,960.00
15887	9/21/2017	Gilbert Associates, Inc.		AP		3,100.00
15888	9/21/2017	Grainger		AP		121.94
15889	9/21/2017	MARTIN HUDSON		AP		697.22
15890	9/21/2017	KC Courier, LLC		AP		309.00
15891	9/21/2017	Ken's Asphalt		AP		9,948.50
15892	9/21/2017	Kurey & Associates		AP		6,600.00
15893	9/21/2017	LAMAR Construction Equip Rental		AP		1,920.00

Check No	Check Date	Name	Comment	Module	Clear Date	Amount
15894	9/21/2017	Land & Structure		AP		1,751.25
15895	9/21/2017	Lennen Associates		AP		1,040.00
15896	9/21/2017	MetLife Small Business Center		AP		165.93
15897	9/21/2017	Moore Bros. Savenger Co., Inc.		AP		445.46
15898	9/21/2017	Mother Lode Answering Service		AP		156.00
15899	9/21/2017	Jason Niedens		AP		151.76
15900	9/21/2017	Orchard Business/SYNCB		AP		90.26
15901	9/21/2017	O'Reilly Auto Parts		AP		666.33
15902	9/21/2017	PML Hardware & Supply Inc.		AP		1,830.00
15903	9/21/2017	Rabobank Visa Card		AP		1,071.41
15904	9/21/2017	Ray Suess Insurance & Invst		AP		6,083.34
15905	9/21/2017	San Francisco Public Utilities Commissi		AP		20,224.74
15906	9/21/2017	Blanca Santana		AP		62.67
15907	9/21/2017	Laurie Ann Shipman		AP		95.79
15908	9/21/2017	Staples Credit Plan		AP		693.99
15909	9/21/2017	Tuo. Co. Public Power Agency		AP		18,911.09
15910	9/21/2017	Tuolumne-Stanislaus IRWMA		AP		100.00
15911	9/21/2017	Two Guys Pizza		AP		57.46
15912	9/21/2017	Gary & Vicki Vartanian		AP		12.58
15913	9/21/2017	Verizon Wireless 7706		AP		152.76
115061	9/27/2017	Operating Engineers Local #3		AP		258.94
901779	9/27/2017	Dept of Child Support Services		AP		235.95
901780	9/27/2017	EDD - Electronic		AP		1,337.47
901781	9/27/2017	Federal EFTPS		AP		10,425.22
901782	9/27/2017	Pers - Electronic		AP		5,753.64
901783	9/27/2017	TD Ameritrade Trust Co.		AP		800.00
115040	9/29/2017	Jonathan Sterling		PR		2,954.54
115041	9/29/2017	Jonathan Sterling		PR		2,027.42
15914	9/30/2017	Apex Safety & Supply Inc.		AP		437.40
15915	9/30/2017	Atkinson, Andelson, Loya, Rudd & Ror		AP		477.00
15916	9/30/2017	Bobcat Central, Inc.		AP		78.84
15917	9/30/2017	Carolyn Bohan		AP		135.10
15918	9/30/2017	Carbon Copy Inc.		AP		70.00
15919	9/30/2017	CWEA		AP		90.00
15920	9/30/2017	Ann Daws		AP		31.55
15921	9/30/2017	Vaughan Edwards		AP		54.43
15922	9/30/2017	Craig Faitel		AP		775.00
15923	9/30/2017	GeoAnalytical Laboratories, Inc.		AP		520.00
15924	9/30/2017	George Reed Inc.		AP		638.14
15925	9/30/2017	Gold Rush Printing		AP		52.61
15926	9/30/2017	Hach		AP		2,173.85
15927	9/30/2017	Erin & Vesna Jennings		AP		39.39
15928	9/30/2017	Lowe's Companies, Inc.		AP		677.40
15929	9/30/2017	Neumiller & Beardslee		AP		932.00
15930	9/30/2017	PLIC-SBD Grand Island		AP		2,405.69
15931	9/30/2017	Timothy & Deborah Shanahan		AP		378.82
15932	9/30/2017	Standard Insurance Co		AP		423.57
15933	9/30/2017	Verizon Wireless 5298		AP		261.15
15934	9/30/2017	Nelida Villanueva		AP		62.53
15935	9/30/2017	VSP		AP		402.30
15936	9/30/2017	Wells Fargo Bank, N.A.		AP		359.29

Total Check Count: 214,804.875

Aug CK#114996 (- 2,954.55)

Sept ACH Payroll +43,243.47
Total 255,093.87

Legal Fees

79-015	<u>CK#</u>	<u>Atkinson</u>	<u>CK#</u>	<u>Neumiller</u>
July	15811	\$ 795.00	15839	\$ 299.00
August	15915	\$ 477.00	15929	\$ 932.00
September				
October				
November				
December				
January				
February				
March				
April				
May				
June				

Total \$ 1,272.00 \$ 1,231.00

Legal Fee Total \$ 2,503.00

GROVELAND COMMUNITY SERVICES DISTRICT										
CASH BALANCES AS OF 09/30/2017										
Cash Accounts	Acct	Water	Sewer	Grunsky	Enterprise & D/G Funds	Fire	Parks	Government Funds	Total	G/L Totals
Rabobank Operating Account	4498	914,034.54	136,874.62	7,377.71	1,058,286.87	251,036.26	57,996.42	309,032.68		1,367,319.55
Rabobank Investment (Operating Reserves)	2814	340,441.13	172,032.91	11,689.28	524,163.32	842,289.71	86,202.05	928,491.76		1,452,655.08
Rabobank Payroll Account	2426	23,172.62	24,211.23		47,383.85	3,578.25	2,963.24	6,541.49		53,925.34
Rabobank Drought Grant Account	5389	175,523.69			175,523.69					175,523.69
Rabobank Pension Acct	8958	15,016.40	11,012.08		26,028.48	45,049.19	200.40	45,249.59		71,278.07
Cash Drawer		168.00	132.00		300.00					300.00
Petty Cash		100.00	100.00		200.00					200.00
Cash in Co Treas SAD 77-1		(588.00)			(588.00)					(588.00)
LAIF Transferred to Investment Reserves Acct			60.38		60.38					60.38
Total Unrestricted Cash		1,467,868.38	344,423.22	19,066.99	1,831,358.59	1,141,953.41	147,362.11	1,289,315.52		3,120,674.11
Water Bond Pymt Reserve	4662	1,023,227.41	-		1,023,227.41	-	-	-		1,023,227.41
Sewer Bond Pymt Reserve	4745	-	648,534.40		648,534.40	-	-	-		648,534.40
2013 Water Bond Sale - Restricted Reserve	2498	314,800.09			314,800.09					314,800.09
2014 BNY Water Bond Sale - Restricted Reserve	5112	378,650.13			378,650.13					378,650.13
2014 BNY Sewer Bond Sale-Restricted Reserve	9240		325,072.92		325,072.92					325,072.92
Total Restricted Cash		1,716,677.63	973,607.32		2,690,284.95	-	-	-		2,690,284.95
Total Cash and Investments		3,184,546.01	1,318,030.54	18,464.26	4,521,040.81	1,141,953.41	147,362.11	1,289,315.52		5,810,959.06