



**Information Provided By**

O&M Manager: Luis Melchor  
 Operations Supervisor: Greg Dunn  
 Maintenance Supervisor: Andrew Klein  
 Administration Services Technician: Rachel Pearlman

**Operations and Maintenance Report  
 September 2022**

**Operations Department**

**Wastewater Treatment Division**

Influent Totals	
Total	2.90
High	0.13
Low	0.07
Average	0.10

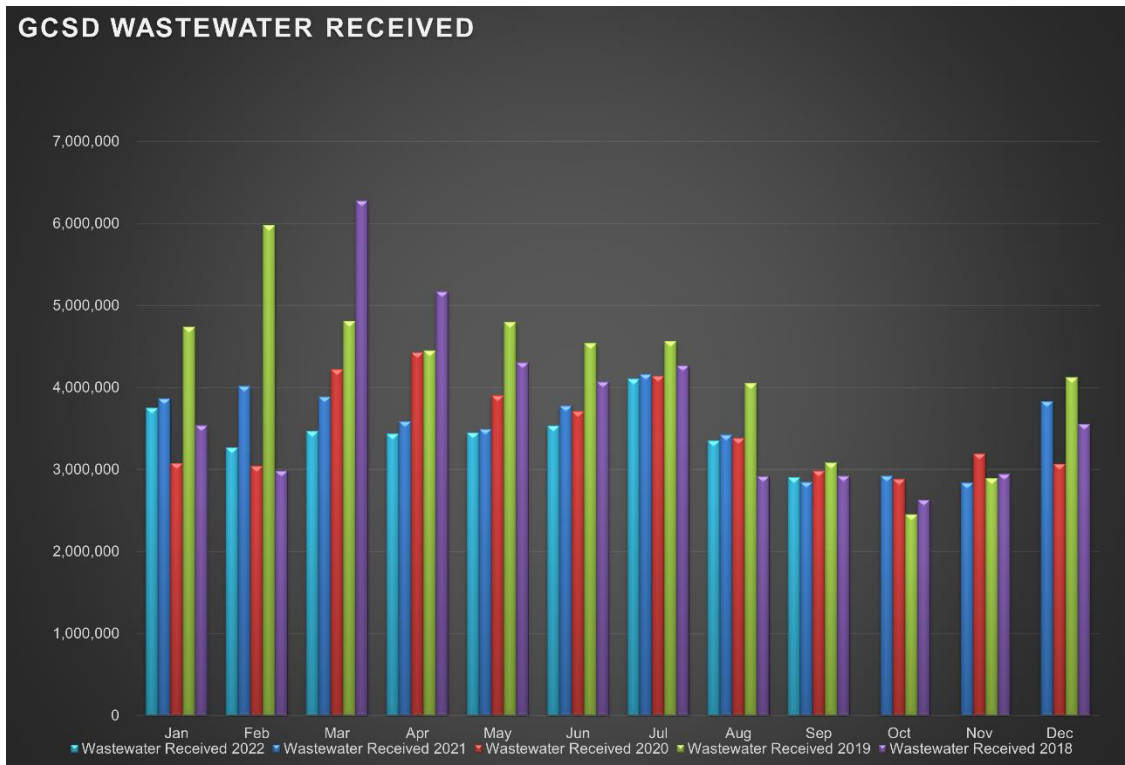
Effluent Totals	
Total	2.94
High	0.14
Low	0.07
Average	0.10

Reclamation Totals	
PML	
Spray Fields	
PML Season Total	
Spray Field Season Total	

Wasting Totals	
Total Inches	239
Total Pounds	4730
Active Accounts	1562

STP Rainfall Totals by Year During Current Month (Inches)					
Season	2022	2021	2020	2019	2018
	1.99	0.02	0.03	0.36	0.00
High	High 1.31	High 0.02	High 0.03	High 0.32	High 0.00

**Charted Historical Monthly Influent Totals**



## **Wastewater Treatment Division**

### **Routine Tasks**

- Took weekly Bac-Ts and BOD of the Chlorine Contact Chamber (CCC) and sent into Alpha Lab for testing
- Completed monthly Wastewater Report and sent to the State Water Resources Control Board
- Completed daily rounds and Lab

## **Water Treatment Division**

### **Routine Tasks**

- Submitted monthly Water Treatment Report to State Water Resources Control Board
- Submitted monthly Conservation Report to State Water Boards
- Performed weekly checks and calibrations on all analyzers at 2G, BC, and AWS
- Performed monthly UV calibrations at 2G and BC
- Took weekly Treatment Plant samples and sent into Alpha Lab
- Monitored/sampled Distribution Tanks as needed

# Maintenance Department

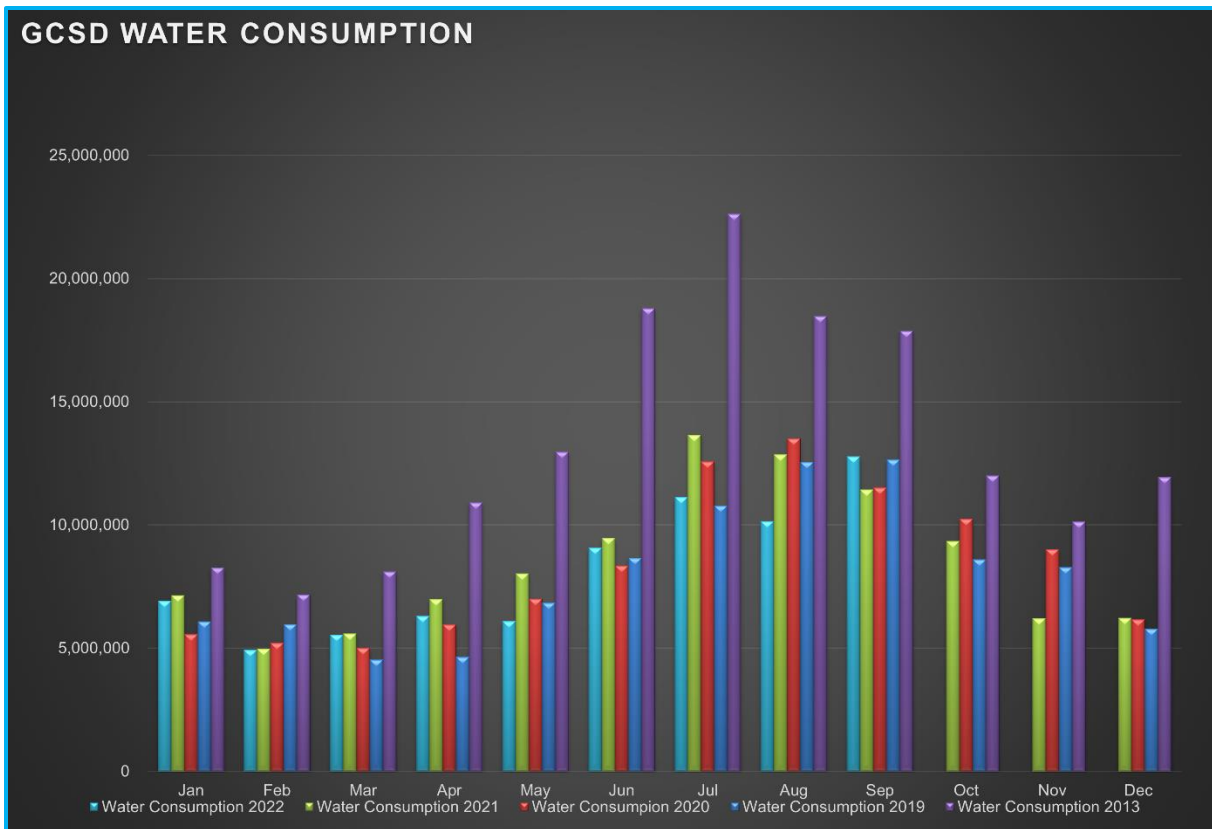
## Water Distribution System Division

Meter Related Services	Total
Check / Repair Meters	1
Water Meters Installed	0
Monthly Meter Restrictions	0
Meter Changeouts	5
Tenant Final Reads	3
Re-Reads	35
Meter Turn-Offs	4
Meter Turn-Ons	1
Meter Tests	97
<b>Total Meter Related Issues</b>	<b>146</b>

Billed Consumption (Gallons)	2022	2021	2020
Residential	11,917,092	10,652,292	11,519,011
Commercial	885,484	786,827	N/A
<b>Total</b>	<b>12,802,576</b>	<b>11,439,119</b>	<b>11,519,011</b>

<b>Active Accounts</b>	3259
------------------------	------

## Charted Historical Monthly Water Consumption



**Maintenance and Repair Data**

Description	Total
Water Main Leaks / Repairs	1
Water Service Line Leaks / Repairs	0
Fire Hydrant Repairs / Replacements	0
Number of Hydrants Flushed	9
Number of Dead-Ends Flushed	0
Water Valves Exercised	0
GIS Points	0

Description	Gallons
Flushing for Water Quality	12,700
Water Loss Due to Leaks / Breaks	28,800

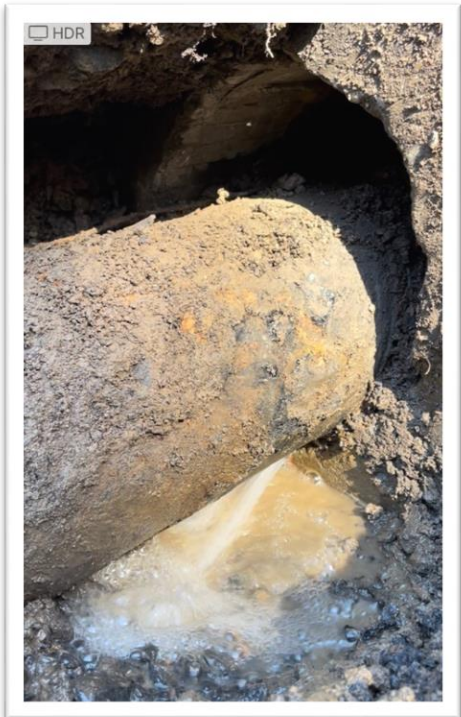
After-Hours Calls (Hours)				
Water	Sewer	Park	Other	Total
8	5	1	0	14

**Maintenance and Repair**

- **Routine Tasks**
  - Read all District Water Meters
  - Customer Service Calls (Low / High Pressures, No Water, Turn-Ons / Turn-Offs, Etc.)
  - Underground Service Alert (USA) Utility Marking Program
  - Weekly Pump Station Inspections at Tank 2, Tank 4, Tank 5 (Buildings, Tanks, Motors, Pumps, Drives, Communications, Generators, and Auxiliary Equipment)
- **Tanks and Pump Stations**
  - Inspect and exercise generator at Tank 2
  - Inspect and exercise generator at Tank 4
  - Inspect and exercise generator at Big Creek TP
  - Inspect and exercise generator at 2G TP
- **Distribution System**
  - Uncovered mainline leak at Ferretti Rd/Big Creek Bridge. Referring to contractor.
  - Repaired water service line leak at 20350 Pine Mountain Dr
  - Repaired water service line leak at 20828 McKinley Way
  - Install new 1" manifold and two 1" meters at U11/L55 and L56, Elderberry Ct
  - Repair water meter box lid and install bollard at 20810 Ferretti Rd
  - Assist Moyle Excavation (traffic control) with water main abandonment for Resiliency Center Project.

**Water break – Ferretti Rd at the Big Creek Bridge**

**We located a leak on our 8" Main running under the bridge. Unfortunately, the leak is in the footing of the bridge and will require some extra time and equipment to get repairs completed. Stay Tuned!!!**



## Wastewater Collection System Division

Description	Total
Manholes Inspected	81
GIS Points	0
Customer Complaint	0
Odor Complaints	0

Description	Total
Flushing/Jetting (Feet)	7190
Video Inspection (Feet)	8030

Description	Total
Sanitary Sewer Spills (SSO)	1
SSO Gallons Spilled	270

## Maintenance and Repair

- **Routine Tasks**
  - Weekly lift station site inspections
  - Added degreaser and odor control to lift stations
- **Lift Stations**
  - Cleaned: LS1, LS2, LS3, LS4
  - Inspect, clean, and test pressure transducer and replace generator battery at LS11
  - Troubleshoot Pump 2 at LS6. Found and repaired faulty wiring connection.
  - Flushed/Jetted gravity sewer line areas (See data above): CIP project scope
  - Sewer Lateral Repair 12969 Clements Rd

## Pictures

### Sewer Lateral Installs – New Developments - 55 and 56 Elderberry Ct



## Parks Division

### Maintenance and Repair

- **Mary Laveroni Community Park**
  - Landscape Maintenance
  - 49er Festival 09/17/2022
  - Movies in the Park 09/23
- **Ballfield & Dog Park**
  - Leak repair on water service line to dog park.

## General Maintenance Division

### Maintenance By Department

- **Operations Department**
  - 2G Water Treatment Plant
  - Big Creek Water Treatment Plant
  - AWS
  - STP
    - Begin design and build out for stronger removable railings around e-basin
- **Maintenance Department**
  - Equipment
    - R&R motor and repair breaker for belt on headworks; repair belt lacing
    - Inspect and exercise generator at STP
    - Install and test parts washer for maintenance shop
  - Vehicles
    - 50807: R & R oil drain hose
    - 50415: Replaced motor mounts, shocks, bump stops, repair taillight wiring.
    - 42030: Service oil, transmission, filter; R&R left front CV shaft and cleaned area
    - 41719: Oil Change and tire rotation
    - 42128; Oil change, Inspected undercarriage and tire wear
    - 70781: Diagnosed low voltage with lights on. Replaced alternator.
    - 79787: 90 Day Inspection, Repair Aux pump pressure gauge lines
    - 59613: Repair door handle mechanism

- 20760: Inspect and run at operating temperatures
  - 21930: Inspect and run at operating temperatures
  - 20340: Inspect and run at operating temperatures
  - 20350: Inspect and run at operating temperatures
  - 20420: Inspect and run at operating temperatures
- 
- Buildings & Yard
    - General yard cleanliness.

### **Contracted Work**

- Moyle Excavation
  - Sanitary Sewer Replacement CIP project continuing
- Presidio Systems Inc
  - Sanitary sewer mainline flushing/CCTV for CIP project.
- Pacific Crane Inspections
  - Annual Inspections

### **Workplace Safety and Training**

- Du-All Safety Trainings
  - Confined Space Training
  - Ladder and Fall Protection Safety and Annual Inspections
  - Excavation Safety and Competent Person Training
- Routine Safety Meetings
  - 1) Daily Tailgate Meetings
  - 2) Weekly Safety Meetings
  - 3) Weekly Security Checks
  - 4) Weekly Vehicle Inspection





**Information Provided By**

O&M Manager: Luis Melchor  
 Operations Supervisor: Greg Dunn  
 Maintenance Supervisor: Andrew Klein  
 Administration Services Technician: Rachel Pearlman

**Operations and Maintenance Report  
 October 2022**

**Operations Department**

**Wastewater Treatment Division**

Influent Totals	
Total	2.70
High	0.10
Low	0.07
Average	0.09

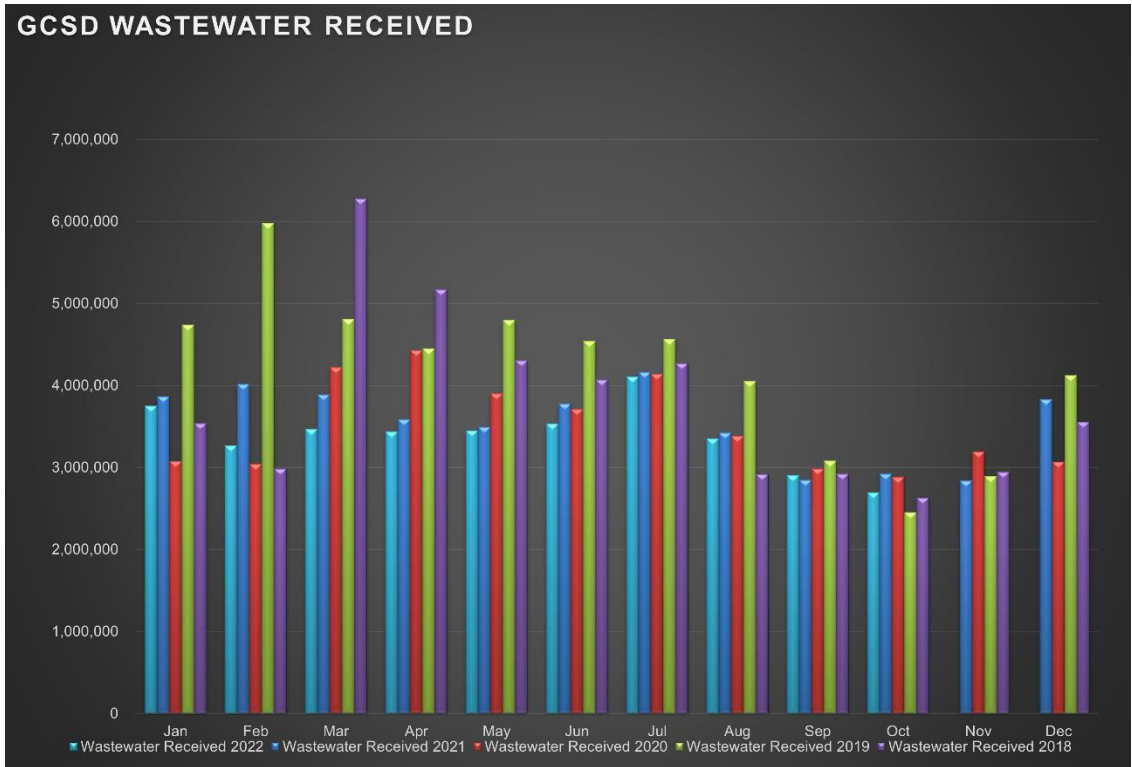
Effluent Totals	
Total	2.65
High	0.10
Low	0.06
Average	0.09

Reclamation Totals	
PML	
Spray Fields	
PML Season Total	
Spray Field Season Total	

Wasting Totals	
Total Inches	291
Total Pounds	5349
Active Accounts	1562

STP Rainfall Totals by Year During Current Month (Inches)					
Season	2022	2021	2020	2019	2018
	2.04	6.59	0.00	0.00	0.63
High	High 0.05	High 4.77	High 0.00	High 0.00	High 0.49

**Charted Historical Monthly Influent Totals**



## **Wastewater Treatment Division**

### **Routine Tasks**

- Took weekly Bac-Ts and BOD of the Chlorine Contact Chamber (CCC) and sent into Alpha Lab for testing
- Completed monthly Wastewater Report and sent to the State Water Resources Control Board
- Completed daily rounds and Lab

## **Water Treatment Division**

### **Routine Tasks**

- Submitted monthly Water Treatment Report to State Water Resources Control Board
- Submitted monthly Conservation Report to State Water Boards
- Performed weekly checks and calibrations on all analyzers at 2G, BC, and AWS
- Performed monthly UV calibrations at 2G and BC
- Took weekly Treatment Plant samples and sent them into Alpha Lab
- Monitored/sampled Distribution Tanks as needed

# Maintenance Department

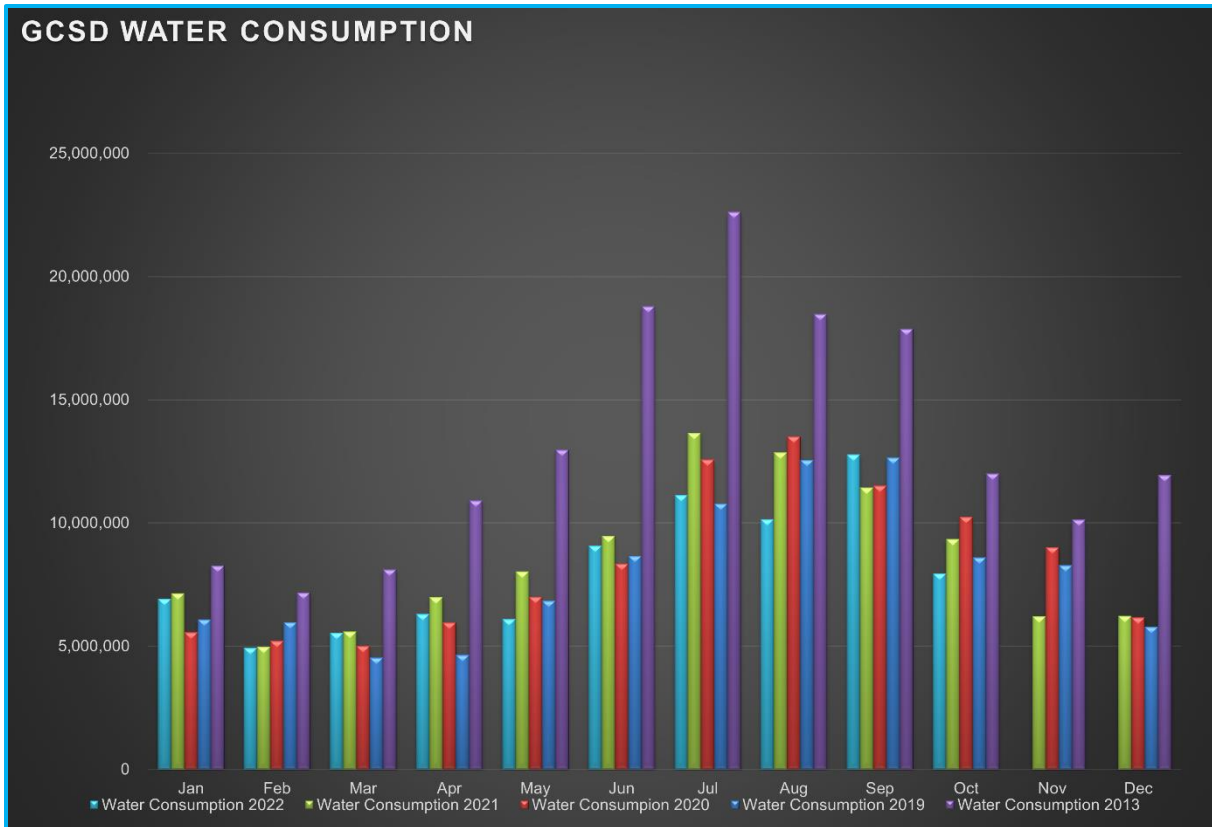
## Water Distribution System Division

Meter Related Services	Total
Check / Repair Meters	9
Water Meters Installed	1
Monthly Meter Restrictions	0
Meter Lock offs	13
Meter Changeouts	0
Tenant Final Reads	3
Re-Reads	30
Meter Turn-Offs	4
Meter Turn-Ons	14
Meter Tests	1
<b>Total Meter Related Issues</b>	<b>75</b>

Billed Consumption (Gallons)	2022	2021	2020
Residential	7,462,514	8,652,909	10,240,234
Commercial	474,349	697,513	N/A
<b>Total</b>	<b>7,936,863</b>	<b>9,350,422</b>	<b>10,240,234</b>

<b>Active Accounts</b>	3260
------------------------	------

## Charted Historical Monthly Water Consumption



**Maintenance and Repair Data**

Description	Total
Water Main Leaks / Repairs	1
Water Service Line Leaks / Repairs	1
Fire Hydrant Repairs / Replacements	1
Number of Hydrants Flushed	7
Number of Dead-Ends Flushed	0
Water Valves Exercised	0
GIS Points	0

Description	Gallons
Flushing for Water Quality	18,000
Water Loss Due to Leaks / Breaks	121,800

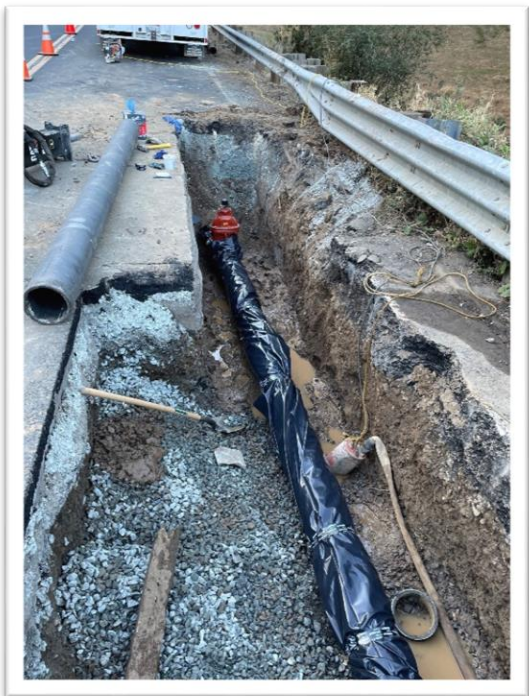
After-Hours Calls (Hours)				
Water	Sewer	Park	Other	Total
4	5	0	0	9

**Maintenance and Repair**

- **Routine Tasks**
  - Read all District Water Meters
  - Customer Service Calls (Low / High Pressures, No Water, Turn-Ons / Turn-Offs, Etc.)
  - Underground Service Alert (USA) Utility Marking Program
  - Weekly Pump Station Inspections at Tank 2, Tank 4, Tank 5 (Buildings, Tanks, Motors, Pumps, Drives, Communications, Generators, and Auxiliary Equipment)
- **Tanks and Pump Stations**
  - Inspect and exercise generator at Tank 2
  - Inspect and exercise generator at Tank 4
  - Inspect and exercise generator at Big Creek TP
  - Inspect and exercise generator at 2G TP
- **Distribution System**
  - Repaired mainline leak at Ferretti Rd/Big Creek Bridge.
  - Repaired water service line leak at 20288 Pine Mountain Dr
  - Repair water meter box lid and install bollard at 20810 Ferretti Rd
  - Install new 3" meter at Resiliency Center

**Water break – Ferretti Rd at the Big Creek Bridge**

**Repairs made by Njirich and Sons, Inc. from Sonora... with traffic control and auxiliary support provided by district staff.**



## Wastewater Collection System Division

Description	Total
Manholes Inspected	143
GIS Points	0
Customer Complaint	0
Odor Complaints	0

Description	Total
Flushing/Jetting (Feet)	2425
Video Inspection (Feet)	920

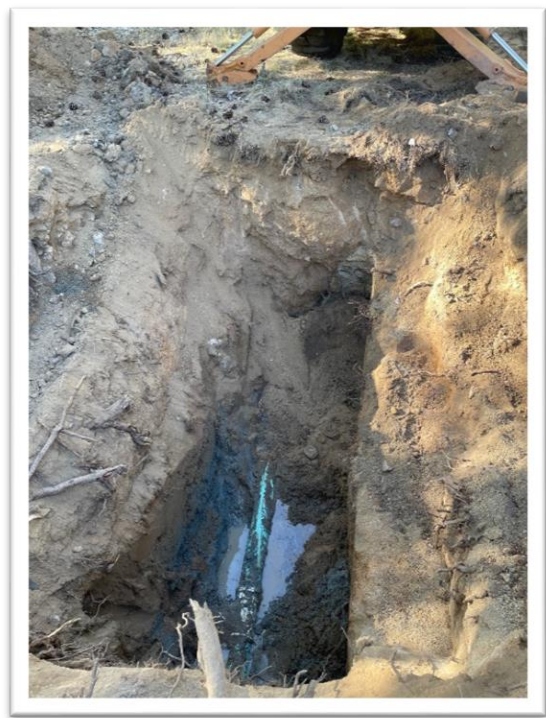
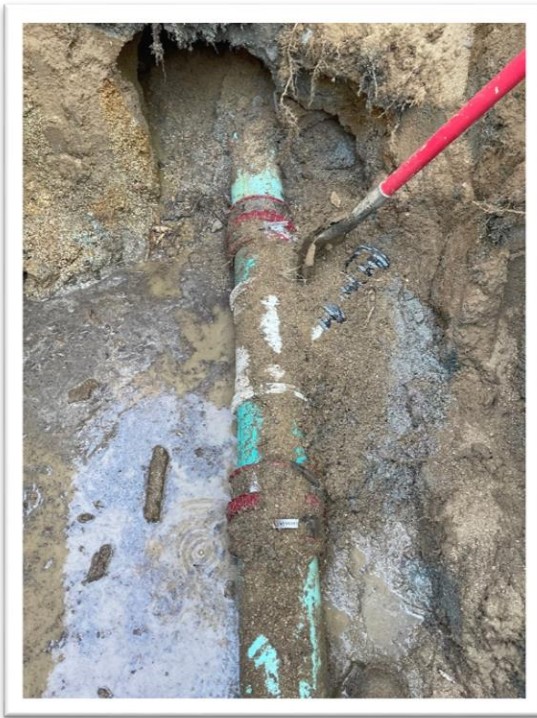
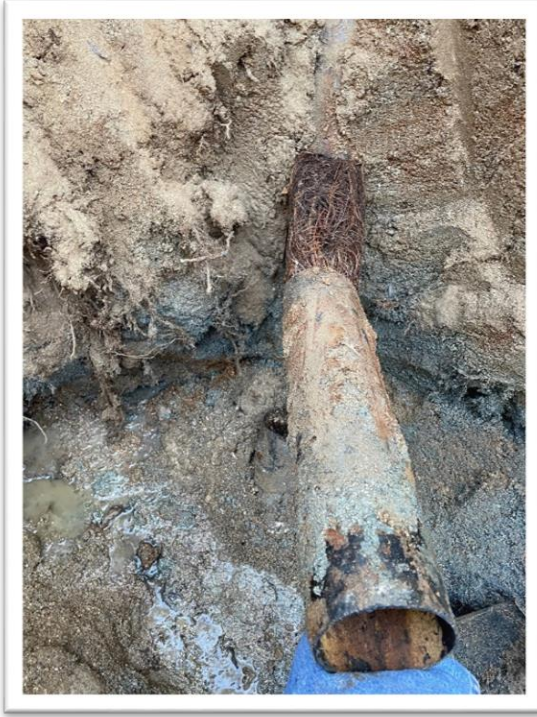
Description	Total
Sanitary Sewer Spills (SSO)	1
SSO Gallons Spilled	150

## Maintenance and Repair

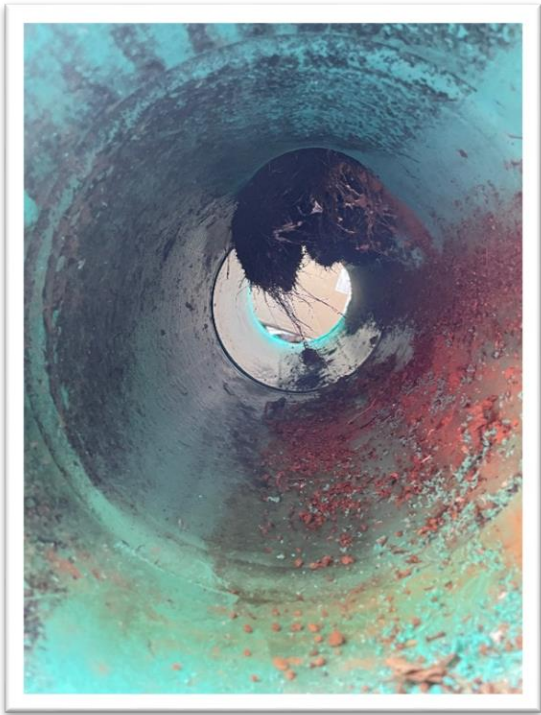
- **Routine Tasks**
  - Weekly lift station site inspections
  - Added degreaser and odor control to lift stations
- **Lift Stations**
  - Cleaned: LS13, LS14, LS15, LS16
  - LS14 Manhole inspections
  - Repair check valve on Pump 2 at LS16
  - Diagnose and inspect LS7 Pump 2. Found corroded wiring causing fail to start alarms. Cleaned and repaired wires. Pump functioning properly.
- **Collection System**
  - Flushed/Jetted gravity sewer line areas
  - Sewer main/lateral repair for roots at 11060 Black Rd
  - Sewer main/lateral repair for roots at 20266 Pine Mountain Dr
  - Install new battery packs and antennas at 2 sewer flow monitors

Pictures

Sewer main/lateral repair 11060 Black Rd



Sewer main/lateral repair 20266 Pine Mountain Dr





## Parks Division

### Maintenance and Repair

- **Mary Laveroni Community Park**
  - Landscape Maintenance
  - Trunk or Treat 10/31/2022
  - Movies in the Park 10/21 - Staff reported an excellent turnout for this one!
  - Remove and stow shade cloths for the winter.
  - Clean far rear stage area for CERT storage.
  
- **Ballfield & Dog Park**

## General Maintenance Division

### Maintenance By Department

- **Operations Department**
  - 2G Water Treatment Plant
    - Replaced chlorine pump with upgraded design pump. Required fabrication and electrical alterations.
  - Big Creek Water Treatment Plant
    - Replaced chlorine pump with upgraded design pump. Required fabrication and electrical alterations.
    - Flush and clean septic system of lime buildup.
  - AWS
  - STP
    - Chain railings were removed and replaced with new galvanized pipe rails around STP basins.
    - Repair and service OSG chlorine generator.
    - Repair effluent pump coupling and test.
  
- **Maintenance Department**
  - Equipment
    - Monthly Inspect and run at operating temperatures...
      - Rain for Rent, Sullair, Vactron, Cement mixer, Light Tower, STP generator, Dunn Ct Generator, AWS Generator, Standby Generator, Highlands Generator

- Vehicles
  - 20350: R & R Fuel filter, degrease and wash unit, tested and operated unit.
  - 40403: R & R brake pads, rotors, and rear discs. Adjusted parking brake shoes.
  - 50810: Service oil/filter, R & R brake pads, R & R beacon
  - 10830: R & R Boards on deck and stain.
  - 70781: Inspect engine for oil leaks. Found multiple areas that need attention, parts backordered. Diagnosed faulty exhaust sensor and ordered replacement.
  
- Buildings & Yard
  - General yard cleanliness.

### **Contracted Work**

- Moyle Excavation
  - Sanitary Sewer Replacement CIP project continuing
- Industrial Electric
  - LS5 Temporary Generator and repair (Generator failed to start)
- Njirich and Sons
  - Water main repair, Ferretti Rd at the Big Creek Bridge

### **Workplace Safety and Training**

- Du-All Safety Trainings
  - Hazard Communications/Hazardous Waste Annual Training
- CWEA Training day at Turlock WWTP – Mechanics
- Annual hearing and mask fit testing.
- Routine Safety Meetings
  - 1) Daily Tailgate Meetings
  - 2) Weekly Safety Meetings
  - 3) Weekly Security Checks
  - 4) Weekly Vehicle Inspection